



VIDEO
LINK

Brookview Executive Suites

105 - 630 USF

1524 BROOKHOLLOW DR

SANTA ANA, CA 92705

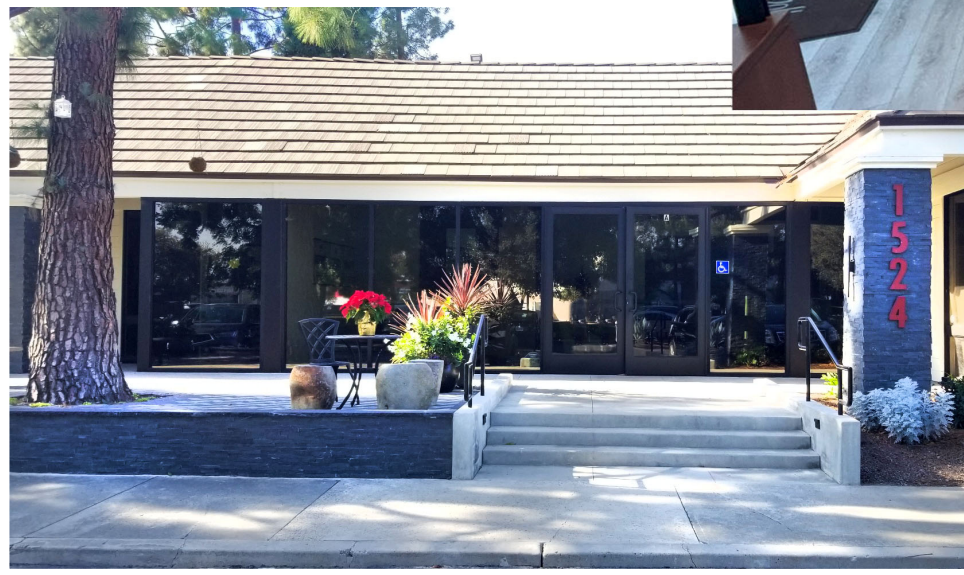
TINA ESKANDARIAN - SHIRIN ZARKESH

714.587.2870 / 714.662.2283

Tina@AyZarInc.com / Shirin@AyZarInc.com



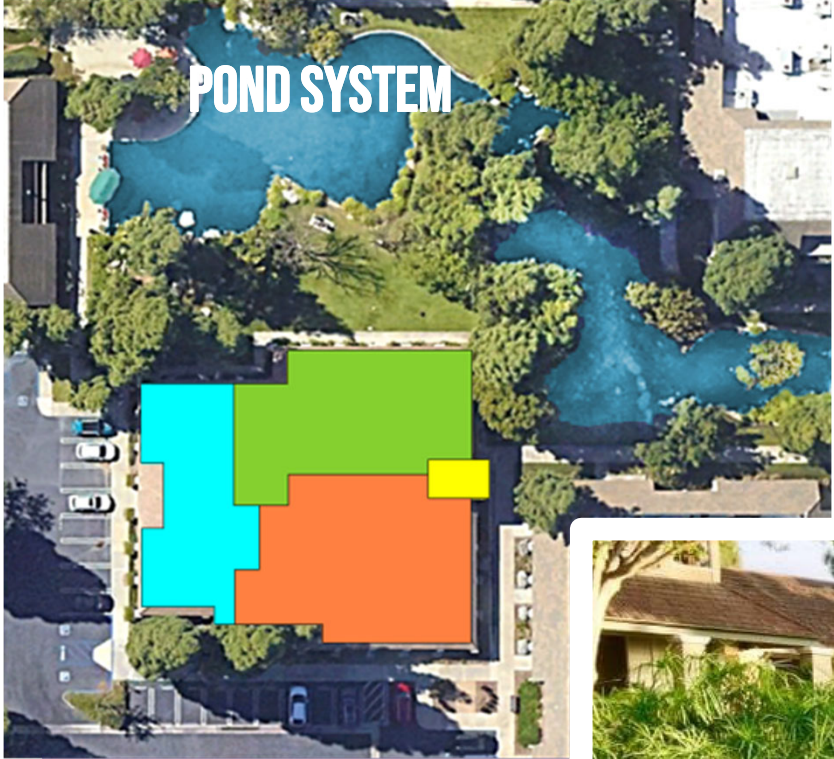
- Premium central OC location
- Immediate access:
55, 5, 405, 22, 73 freeways
- Plentiful Parking
- Sprinklered Building
- 9'+ Ceilings
- Utilities & basic WFI included
- Fully Renovated



PROMINENT ENTRY

HIGH IMAGE LOBBY





- Ground Floor
- 2nd Floor with Views
- 24-7 Access
- Located at main Brookhollow pond in natural scenic area

COMMON AREA

UNLIMITED USE OF CONFERENCE ROOM



NEWLY BUILT RESTROOMS



SECURE MAILBOX
FOR YOUR SITE



UPGRADED BREAK AREA

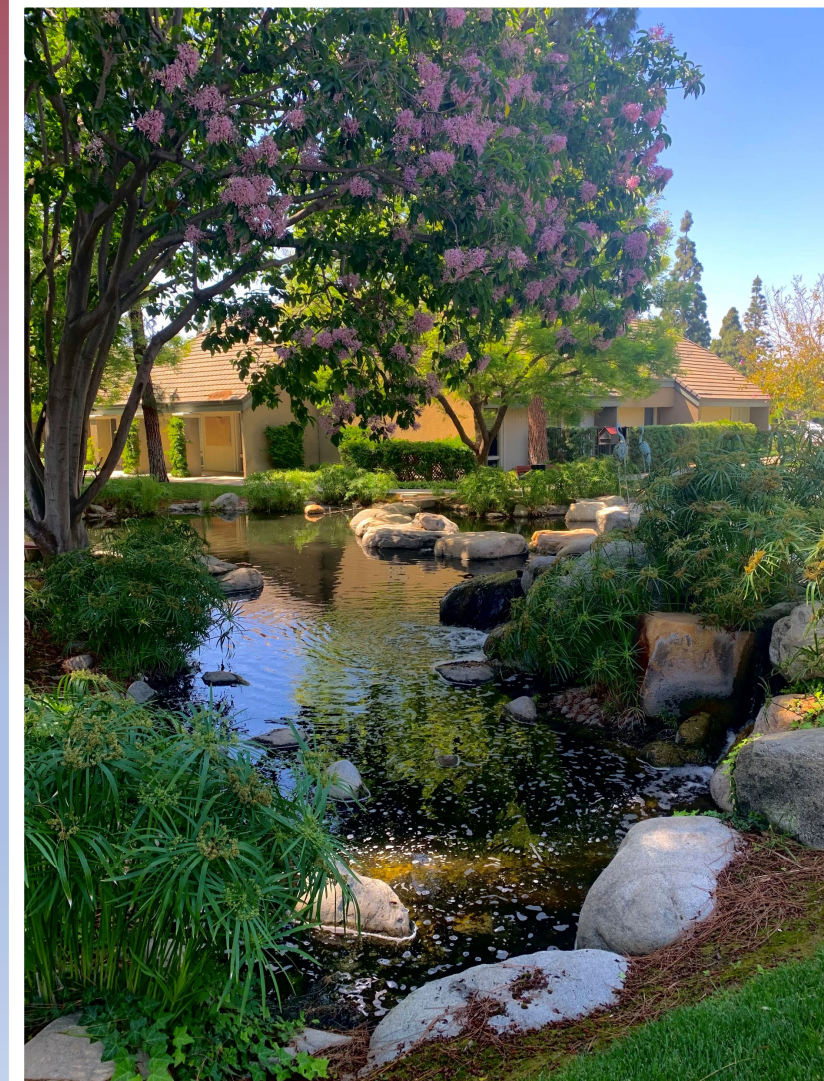




MORE THAN AN OASIS to migratory birds on seasonal flights, Brookhollow is also habitat to varied fauna in a meticulously maintained landscape.

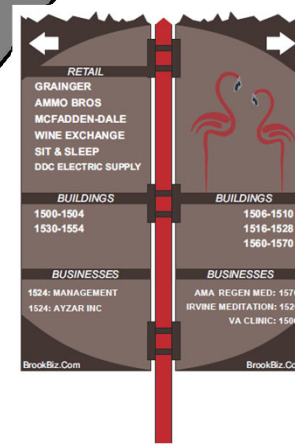
A sanctuary of tall trees, cool shade and bubbling brooks all nestled amid the busy rush of city life.

Meditate on a favorite kōan at Zen Garden, play checkers with multicolored stones, or chill with a relaxing stroll around the pond.





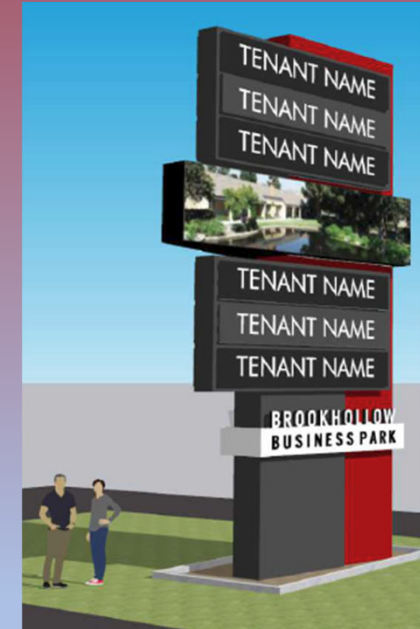
B2 & B3 Signs
Warner Ave & Grande Ave Signage



N Signs
Brookhollow Drive Signage

Signage Opportunity

- Freeway
- Main Avenues
- Directionals
- Building Top



A1 Sign
Freeway Signage

AVAILABLE SUITES

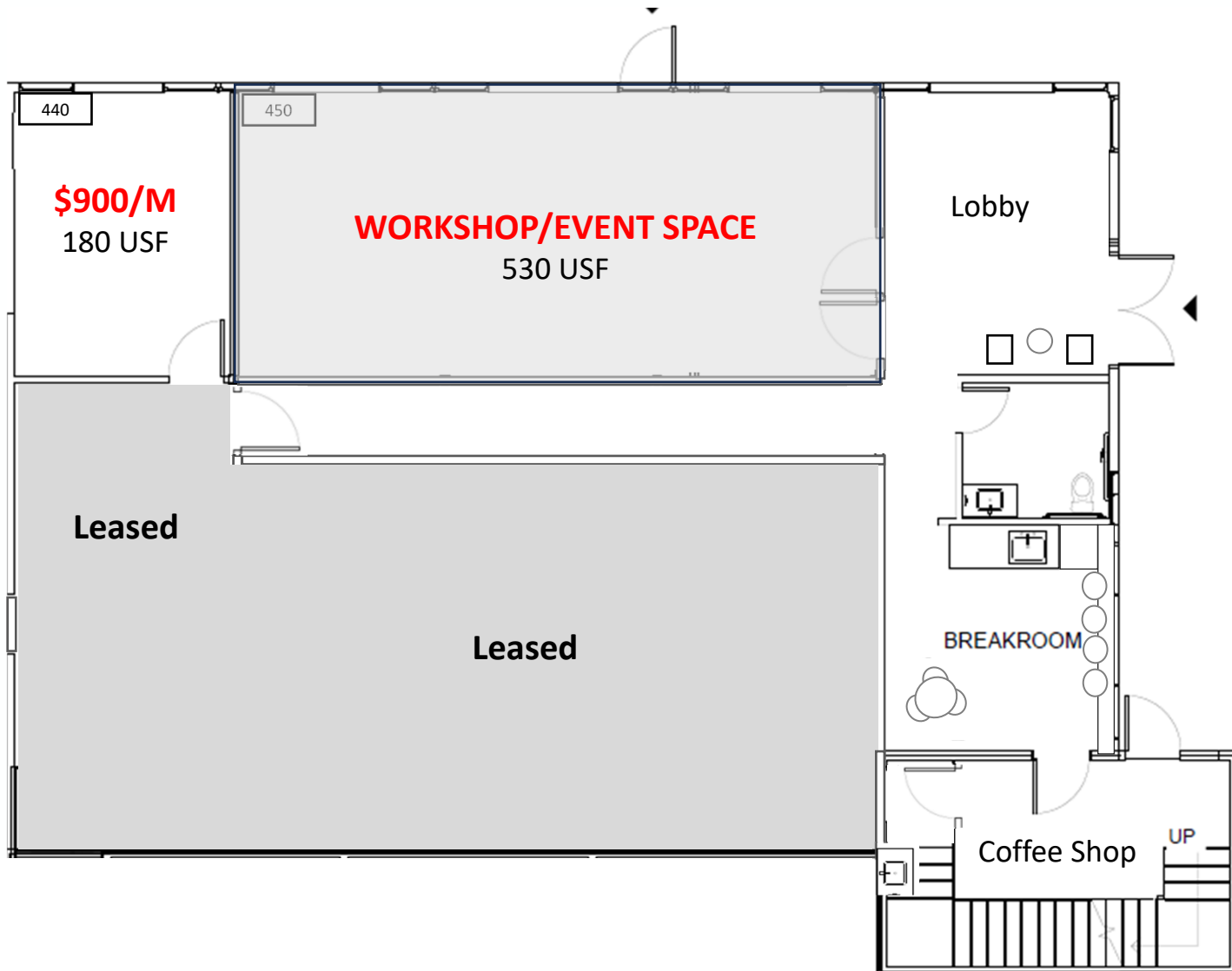
Ste	Floor	USF	\$/M	SPECIFICS
209	1 st	114	\$550	Exclusive office space
440	1 st	180	\$900	Full height glass panels
201W	2 nd	60	\$250	Exclusive workstation
202W	2 nd	60	\$250	Exclusive workstation
300	2 nd	132	\$800	Pond view office
310	2 nd	132	\$800	Pond view office
310J	2 nd	176	\$300	Can be joined with suite 310
Virtual	Either		\$250	Non-exclusive workstation
450	1 st	530		Workshop/Event Space

GROUND FLOOR SUITES

FURNISHED READY TO MOVE



GROUND FLOOR SUITES



UPPER FLOOR SUITES WITH VIEW OF THE POND FURNISHED AND READY TO MOVE



UPSTAIRS SUITES – PRIVATE & SHARED SPACES



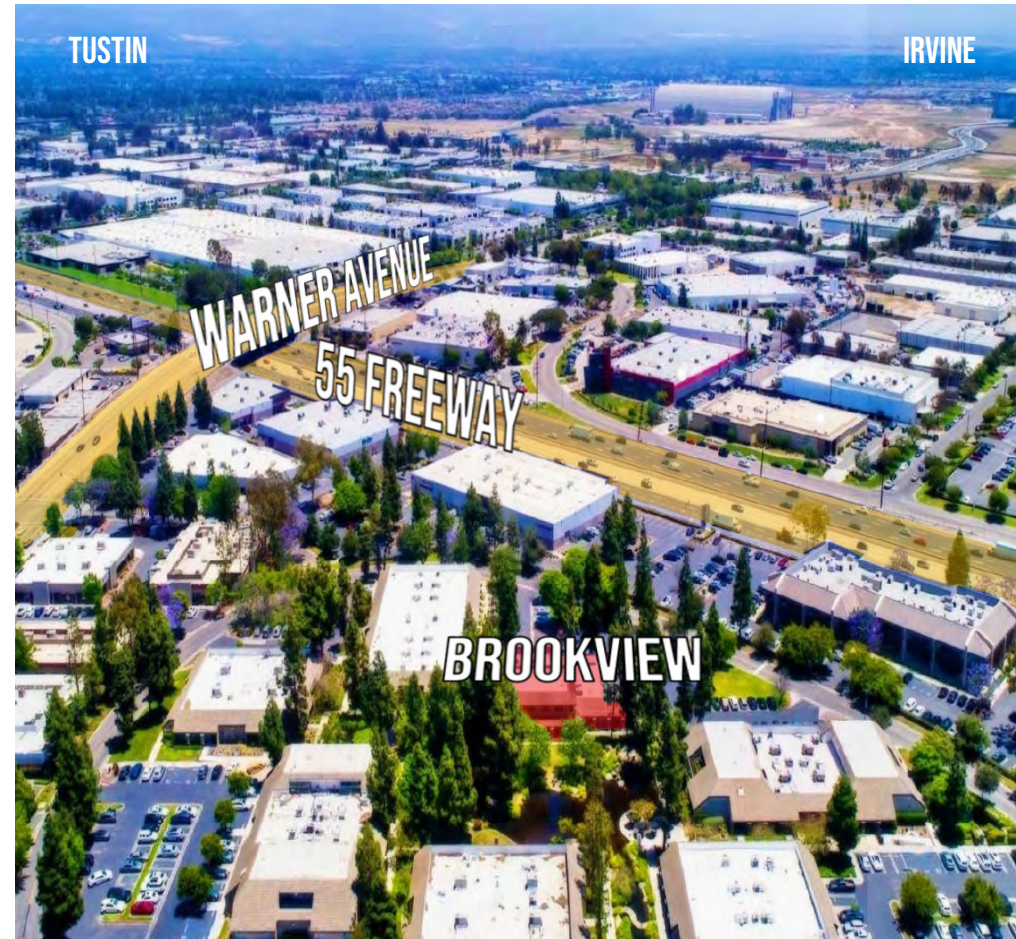
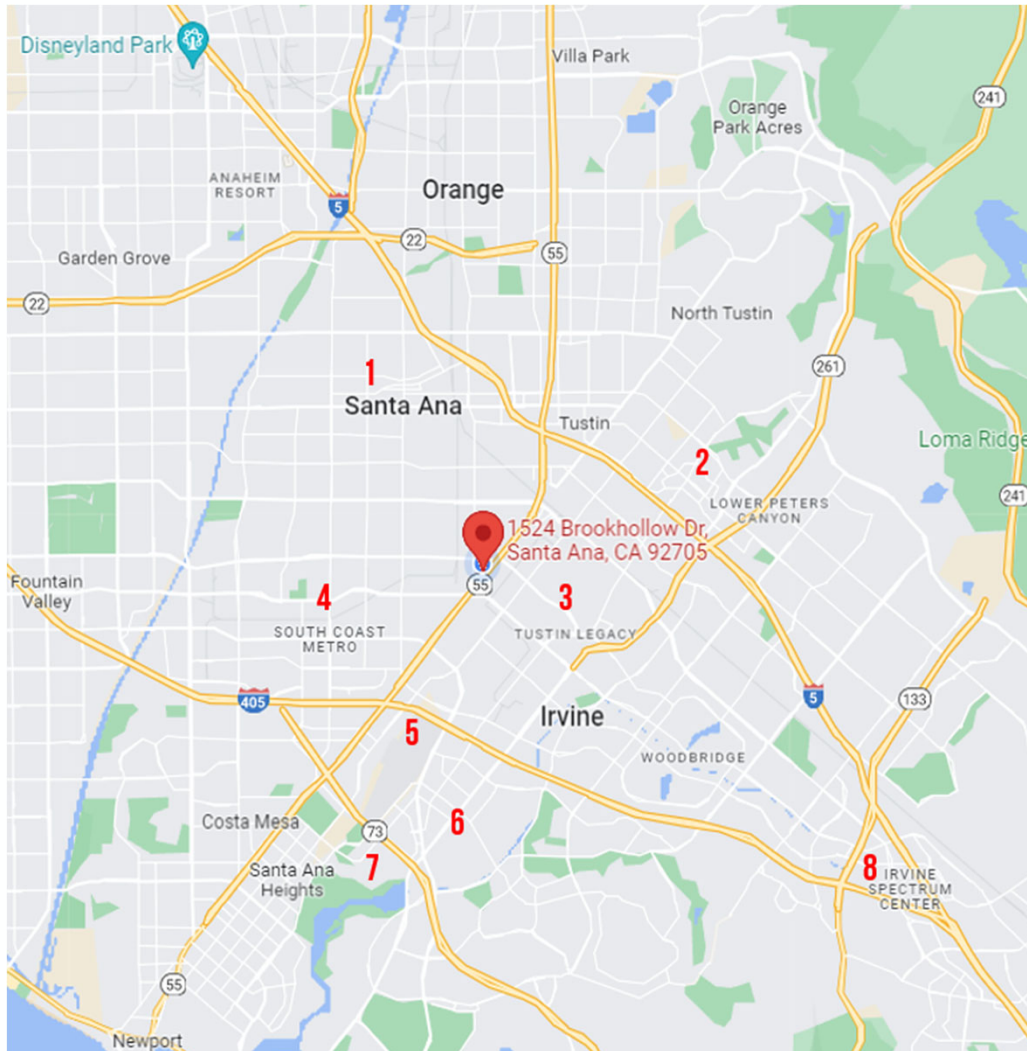
VIRTUAL SUITE "V" WITH ADDITIONAL AMENITIES

- BUSINESS POSTAL ADDRESS/MAIL BOX
- UNLIMITED USE OF NON-EXCLUSIVE WORKSTATION (SUBJECT TO AVAILABILITY)
- UNLIMITED USE OF CONFERENCE ROOM (SUBJECT TO AVAILABILITY)
- BASIC WIFI
- 24/7 ACCESS



LOCATIONS OF INTEREST

1. CITY, COUNTY, STATE, FEDERAL GOV & COURTS
2. IRVINE/TUSTIN MARKETPLACE
3. TUSTIN DISTRICT & LEGACY
4. SOUTH COAST PLAZA
5. JOHN WAYNE AIRPORT
6. HARBOR JUSTICE CENTER
7. UNIVERSITY OF CALIFORNIA, IRVINE
8. IRVINE SPECTRUM



AYZAR

TINA ESKANDARIAN

DRE #02248071

714.587.2870

TINA@AYZARINC.COM