

**702 - 903 Battersby Ave  
Enumclaw, WA**

**3,003 SF - 11,626 SF  
INDUSTRIAL SPACE  
FOR LEASE**





# 702 - 903 Battersby Ave Enumclaw, WA

## AVAILABLE SPACES

**INDUSTRIAL SPACE - ENUMCLAW**  
LOCATION, LOCATION, LOCATION!  
HIGH QUALITY INDUSTRIAL SPACE!

Suite	Total SF	Office SF	Warehouse SF	Loading
<b>106</b> 930 Battersby Ave	3,003 SF	304 SF	2,699 SF	1 GL 12' X 14'
<b>101</b> 702 Battersby Ave	11,626 SF	1,040 SF	8,569 SF WH 2,017 SF WH mezz.	3 GL 12' X 14'



The information contained herein has been obtained from reliable sources, but is not guaranteed. A prospective buyer/tenant should verify each item relating to this property and all information contained herein.

**BEN HEMPHILL**  
(425) 941-1320  
bhemphill@andoverco.com

**MIKE HEMPHILL**  
(206) 550-4176  
mhemphill@andoverco.com

THE ANDOVER COMPANY, INC.

# 702 - 903 Battersby Ave Enumclaw, WA

## PROPERTY HIGHLIGHTS



MODERN  
OFFICE SPACE



22'  
CLEAR HEIGHT



OVERSIZED GRADE  
LEVEL DOORS



CLOSE TO NEARBY  
AMENITIES



AVAILABILITIES  
IN 2025



RATES:  
PLEASE CALL LISTING  
BROKERS



The information contained herein has been obtained from reliable sources, but is not guaranteed. A prospective buyer/tenant should verify each item relating to this property and all information contained herein.

**BEN HEMPHILL**  
(425) 941-1320  
bhemphill@andoverco.com

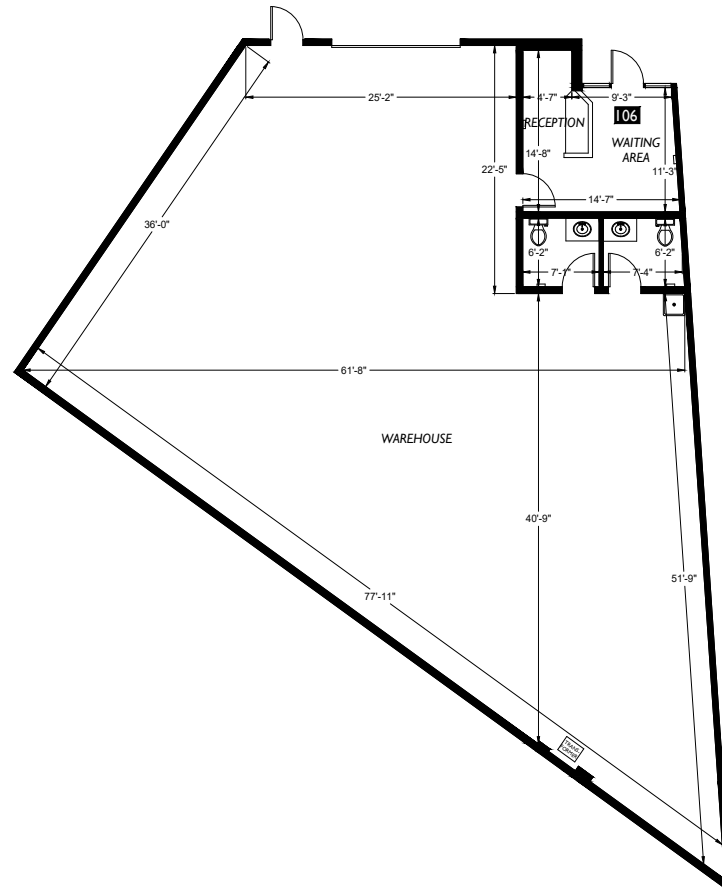
**MIKE HEMPHILL**  
(206) 550-4176  
mhemphill@andoverco.com

THE ANDOVER COMPANY, INC.

# SUITE 106

930 Battersby Ave  
Enumclaw, WA

## FLOOR PLAN



The information contained herein has been obtained from reliable sources, but is not guaranteed. A prospective buyer/tenant should verify each item relating to this property and all information contained herein.

**BEN HEMPHILL**  
(425) 941-1320  
bhemphill@andoverco.com

**MIKE HEMPHILL**  
(206) 550-4176  
mhemphill@andoverco.com

THE ANDOVER COMPANY, INC.



**720 Battersby Ave  
Enumclaw, WA**

The image displays two architectural floor plans for a building, likely a commercial or industrial structure.

**Left Plan (Mezzanine Storage):**

- Top section: MEZZANINE STORAGE, 18'-2" wide, 78'-11" deep.
- Staircase: Located on the right side of the top section.
- Bottom section: MEZZANINE STORAGE, 33'-0" wide, 15'-2" deep.
- Overall dimensions: 20'-7" wide, 40'-1" deep.

**Right Plan (Main Floor):**

- Top section: RECEPTION & WAITING AREA, 11'-11" wide, 11'-10" deep.
- Offices: Three offices are shown, each 7'-0" wide and 11'-1" deep.
- Staff: STAFF area, 11'-0" wide, 10'-10" deep.
- Warehouse: Large open area, 61'-4" wide, 42'-2" deep.
- Workshop: 17'-4" wide, 15'-3" deep.
- Storage: 15'-3" wide, 16'-0" deep.
- Building Mechanical & Riser Room: 11'-1" wide, 11'-1" deep.
- Overall dimensions: 72'-7" wide, 68'-5" deep.



(425) 941-1320

(206) 550-4176

THE ANDOVER COMPANY, INC.

# 702 - 903 Battersby Ave Enumclaw, WA

## AMENITIES



**BEN HEMPHILL**  
(425) 941-1320

bhemphill@andoverco.com

**MIKE HEMPHILL**  
(206) 550-4176

mhemphill@andoverco.com

THE ANDOVER COMPANY, INC.

The information contained herein has been obtained from reliable sources, but is not guaranteed. A prospective buyer/tenant should verify each item relating to this property and all information contained herein.



# 702 - 903 Battersby Ave Enumclaw, WA



**BEN HEMPHILL**

(425) 941-1320

[bhemphill@andoverco.com](mailto:bhemphill@andoverco.com)

**MIKE HEMPHILL**

(206) 550-4176

[mhemphill@andoverco.com](mailto:mhemphill@andoverco.com)

3,003 SF - 11,626 SF  
**INDUSTRIAL SPACE  
FOR LEASE**

 **THE ANDOVER  
COMPANY, INC.**  
CORFAC INTERNATIONAL