

FOR LEASE

2250 S MCDOWELL BLVD EXT

Petaluma, CA 94954



The information herein has not been independently verified by the real estate brokers. Interested parties should have experts of their choice inspect and verify all information. Real estate brokers are not experts with respect to building construction, environmental, legal, tax, and other such matters.



NICK EGIDE
CA LIC #01859524
(415) 762-8067
nick@meridiancommercial.com

615A E. Washington St. | Petaluma, CA 94952 | <https://www.meridiancommercial.com>

FOR LEASE

Executive Summary

2250 S MCDOWELL BLVD EXT

Petaluma, CA 94954



OFFERING SUMMARY

Property Type:	Industrial
Lease Rate:	\$1.30 SF/month (NNN)
Building Size:	+/- 136,867 SF
Available SF:	+/- 136,867 SF
Lot Size:	+/- 263,102 SF
Year Built:	2000
Submarket:	Petaluma/Cotati/Rohnert I

PROPERTY HIGHLIGHTS

- 69 parking stalls
- Secured by perimeter fencing and warehouse gate
- Great shaded picnic area with benches and tables
- 30-32' clear height
- 1 grade level door
- 24 bays with levelers
- 2000 AMPS 480 Volt 3 Phase Power
- ESFR rated sprinkler system
- Energy efficient warehouse lighting
- High production rooftop solar panels
- On-site well and storage tank
- Glass line offices and skylights provide for great natural lighting
- 17 private offices
- 2 floors - elevator served
- NNN expenses approximately \$0.12 per foot

NICK EGIDE

CA LIC #01859524

(415) 762-8067

nick@meridiancommercial.com



FOR LEASE

Property Description

2250 S MCDOWELL BLVD EXT

Petaluma, CA 94954



PROPERTY DESCRIPTION

Hard to find large distribution facility in Petaluma with high end office build out. Great clear height with ample loading docks for convenient distribution. Plenty of power for electric fork lifts and full warehouse racking may be available to purchase or lease, 900 lb capacity per level/4,500 lb per bay.

LOCATION DESCRIPTION

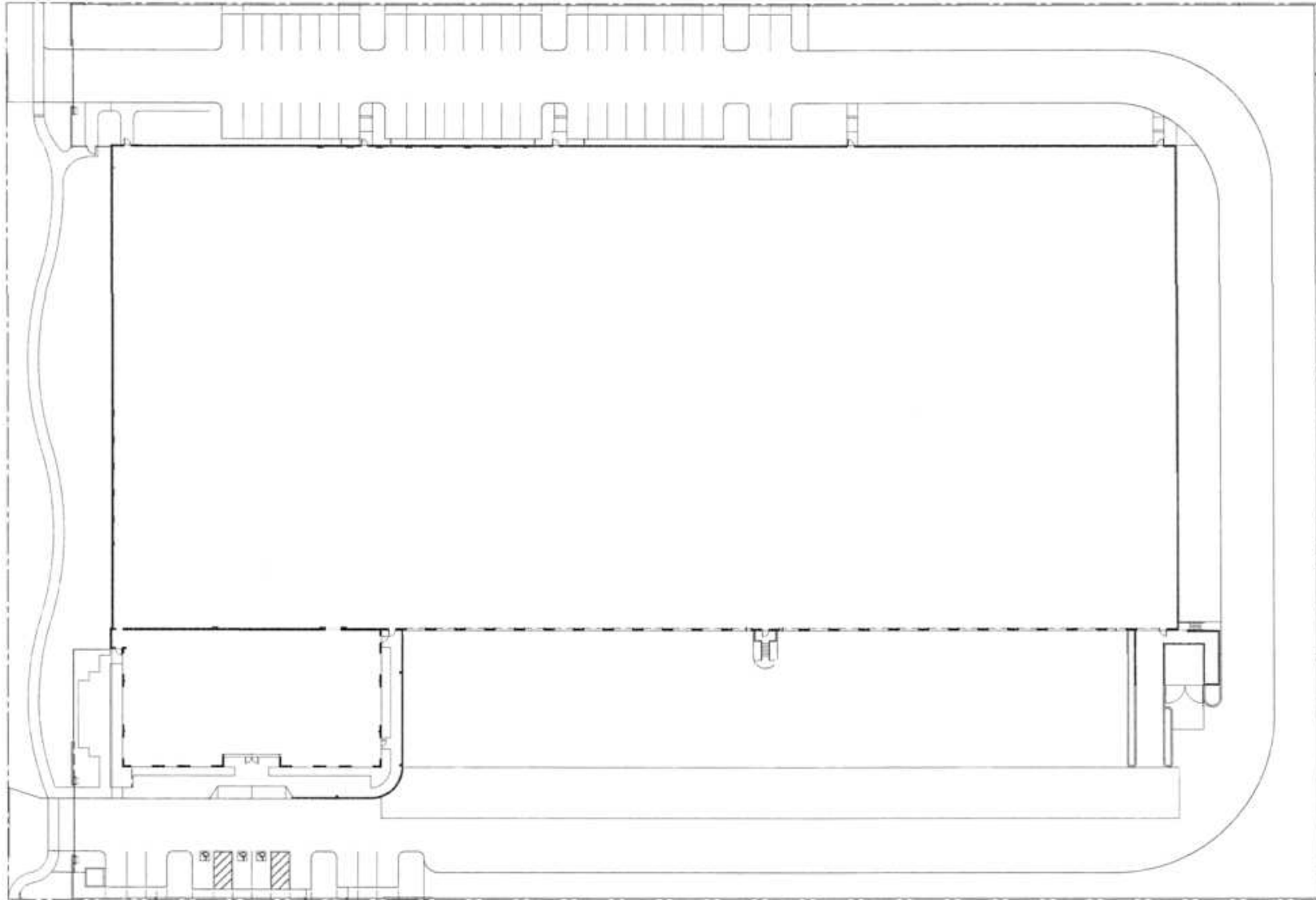
Located in the exclusive Oakmead Business Park, 2250 South McDowell offers the best logistics location in Sonoma County. Just off Highway 116 the property is three minutes away from Highway 101 and has easy access to Interstate 80. The property also offers a great setting for employees as it is a short walk to Schollenberger Park along with many dining amenities including Starbucks, Dandy Sandos, Lily Kai, Extreme Pizza and Pub Republic.

FOR LEASE

Floor Plans - Warehouse

2250 S MCDOWELL BLVD EXT

Petaluma, CA 94954



NICK EGIDE

CA LIC #01859524

(415) 762-8067

nick@meridiancommercial.com

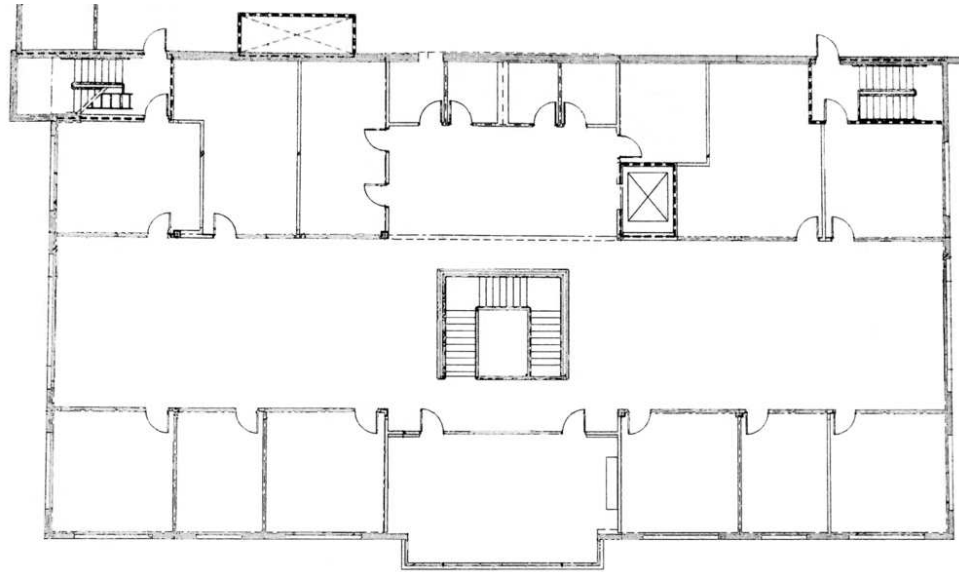


FOR LEASE

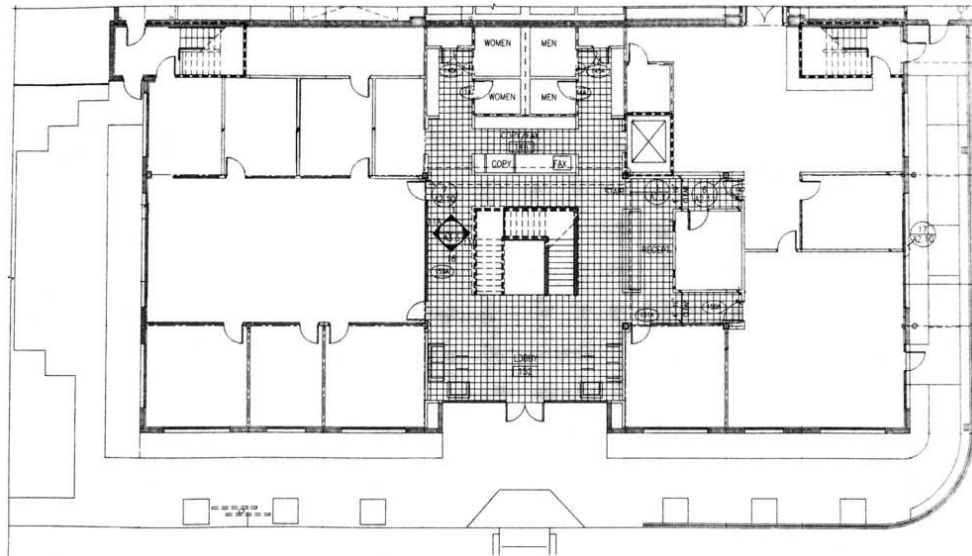
Floor Plans - Office

2250 S MCDOWELL BLVD EXT

Petaluma, CA 94954



1st Floor Office



2nd Floor Office

FOR LEASE

Retailer Map

2250 S MCDOWELL BLVD EXT

Petaluma, CA 94954



Google

Map data ©2024 Imagery ©2024 Airbus,
Maxar Technologies

NICK EGIDE

CA LIC #01859524

(415) 762-8067

nick@meridiancommercial.com



FOR LEASE

Demographics Map & Report

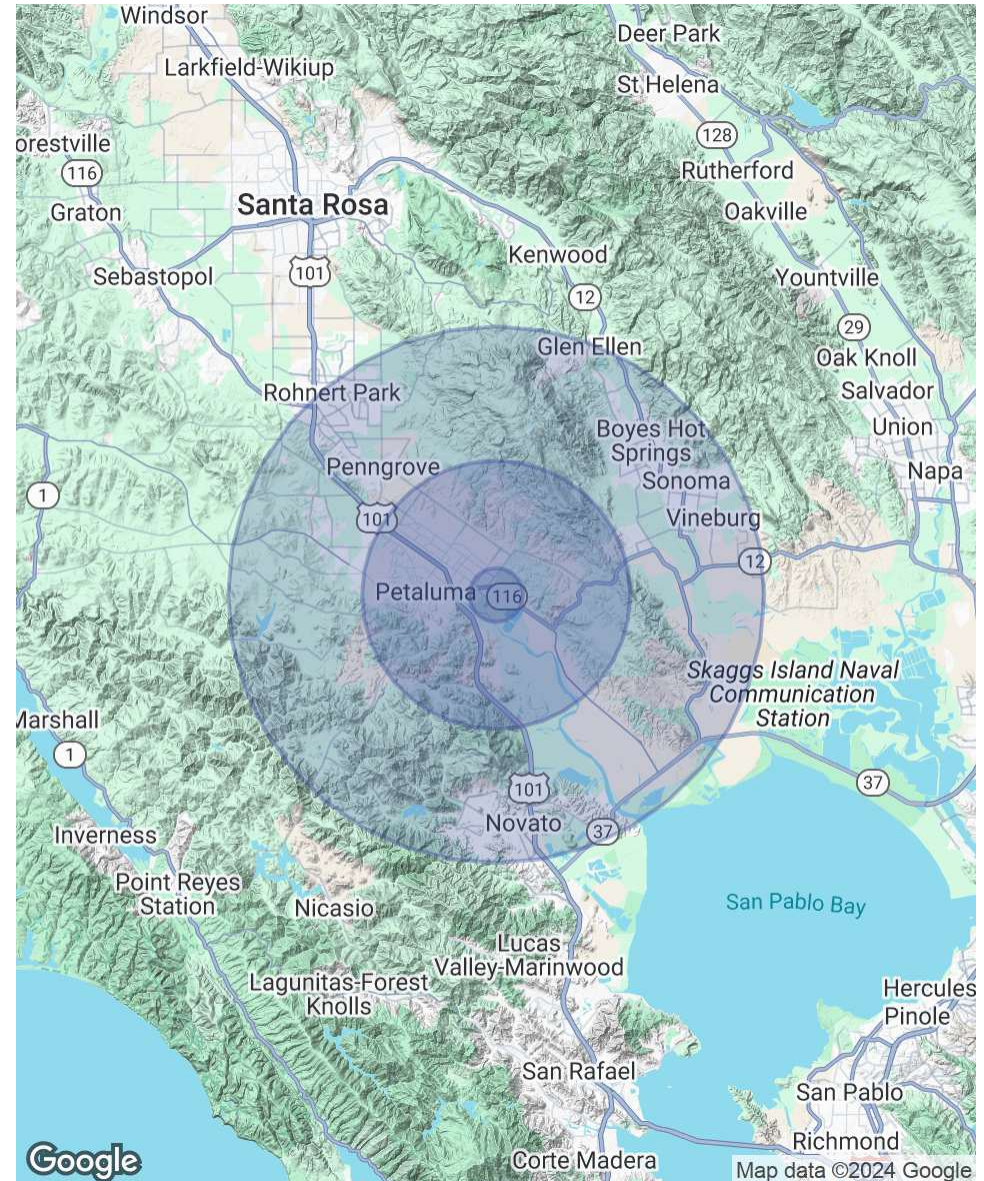
2250 S MCDOWELL BLVD EXT

Petaluma, CA 94954

POPULATION	1 MILE	5 MILES	10 MILES
Total Population	3,055	64,561	183,544
Average Age	39.5	39.7	40.5
Average Age (Male)	36.5	38.2	39.0
Average Age (Female)	41.4	41.2	42.1

HOUSEHOLDS & INCOME	1 MILE	5 MILES	10 MILES
Total Households	1,146	24,203	70,458
# of Persons per HH	2.7	2.7	2.6
Average HH Income	\$98,058	\$90,725	\$92,966
Average House Value	\$515,332	\$599,006	\$644,563

2020 American Community Survey (ACS)



NICK EGIDE

CA LIC #01859524

(415) 762-8067

nick@meridiancommercial.com

