

FOR LEASE

Pacific Liquor Building 405 NAVAL AVE, BREMERTON, WA 98312

Property Summary



### PROPERTY DESCRIPTION

Introducing 405 Naval Ave, Bremerton, WA, 98312 – a prime lease opportunity that ticks all the boxes. With great visibility and ample off-street parking, this property offers convenience for both tenants and customers. Situated within walking distance of PSNS & IMF and Naval Base Kitsap-Bremerton, it boasts a strategic location that's ideal for retail or food/drinking establishments. Whether it's the bustling foot traffic or the thriving local community, this space has everything a business needs to thrive. Don't miss the chance to make this high-traffic, high-impact location the new home for your business.

### PROPERTY HIGHLIGHTS

- Great visibility
- Walking distance to PSNS & IMF as well as Naval Base Kitsap-Bremerton
- Plenty of off-street parking
- Ideal for retail or food/drinking establishment

### OFFERING SUMMARY

Lease Rate:	\$7,000.00 per month (NNN)
Available SF:	5,610 SF
Lot Size:	0.403 Acres
Building Size:	5,610 SF

DEMOGRAPHICS	0.3 MILES	0.5 MILES	1 MILE
Total Households	895	1,981	5,561
Total Population	2,553	6,649	17,364
Average HH Income	\$98,871	\$102,026	\$96,739



#### CARLOS JARA

Commercial Broker  
206.429.5380  
carlos@jaracommercial.com

#### JARA COMMERCIAL

Kitsap County, Bremerton, WA 98312  
206.429.5380 | jaracommercial.com

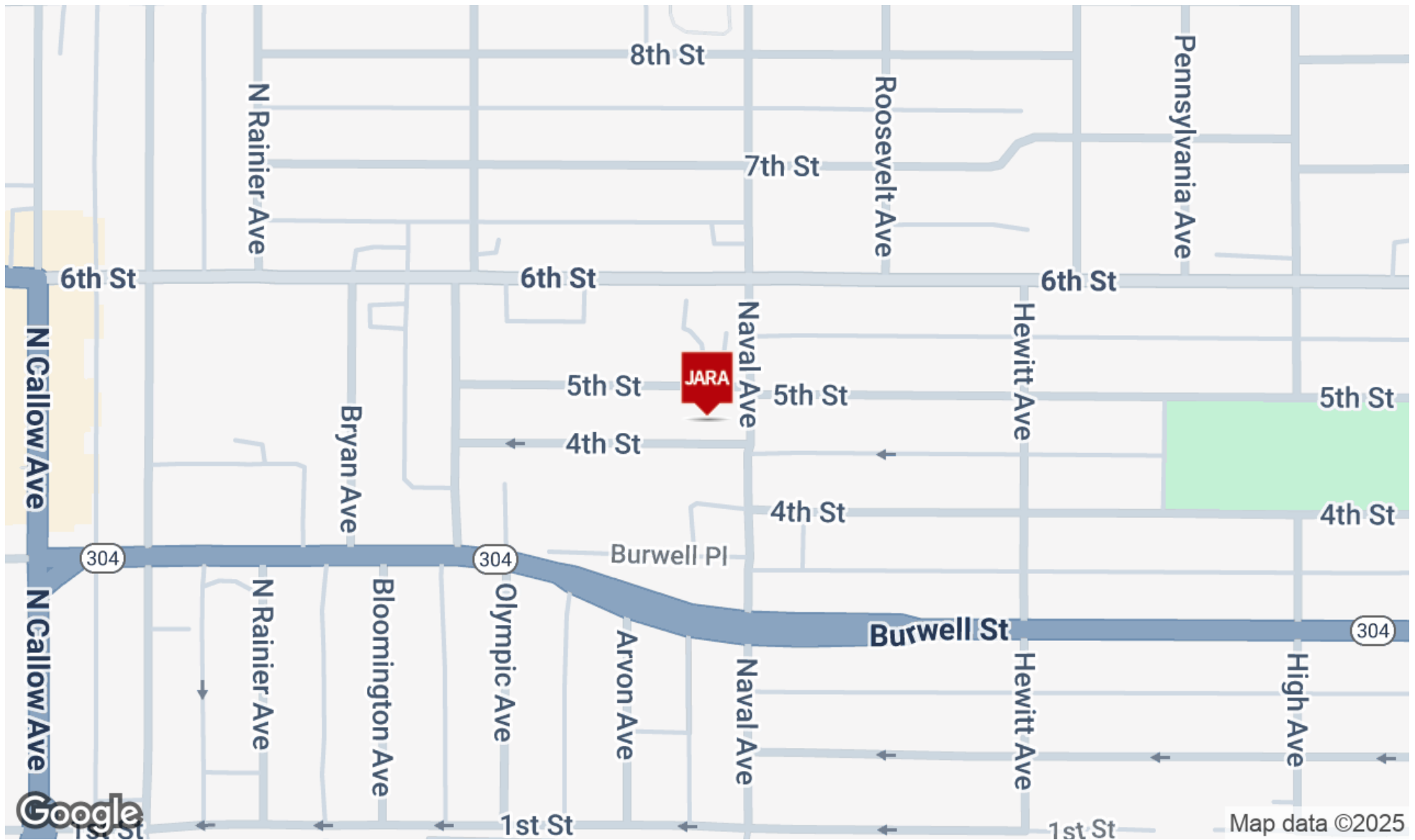


pellego

FOR LEASE

Pacific Liquor Building 405 NAVAL AVE, BREMERTON, WA 98312

Location Map



**CARLOS JARA**

Commercial Broker

206.429.5380

carlos@jaracommercial.com

**JARA COMMERCIAL**

Kitsap County, Bremerton, WA 98312

206.429.5380 | jaracommercial.com

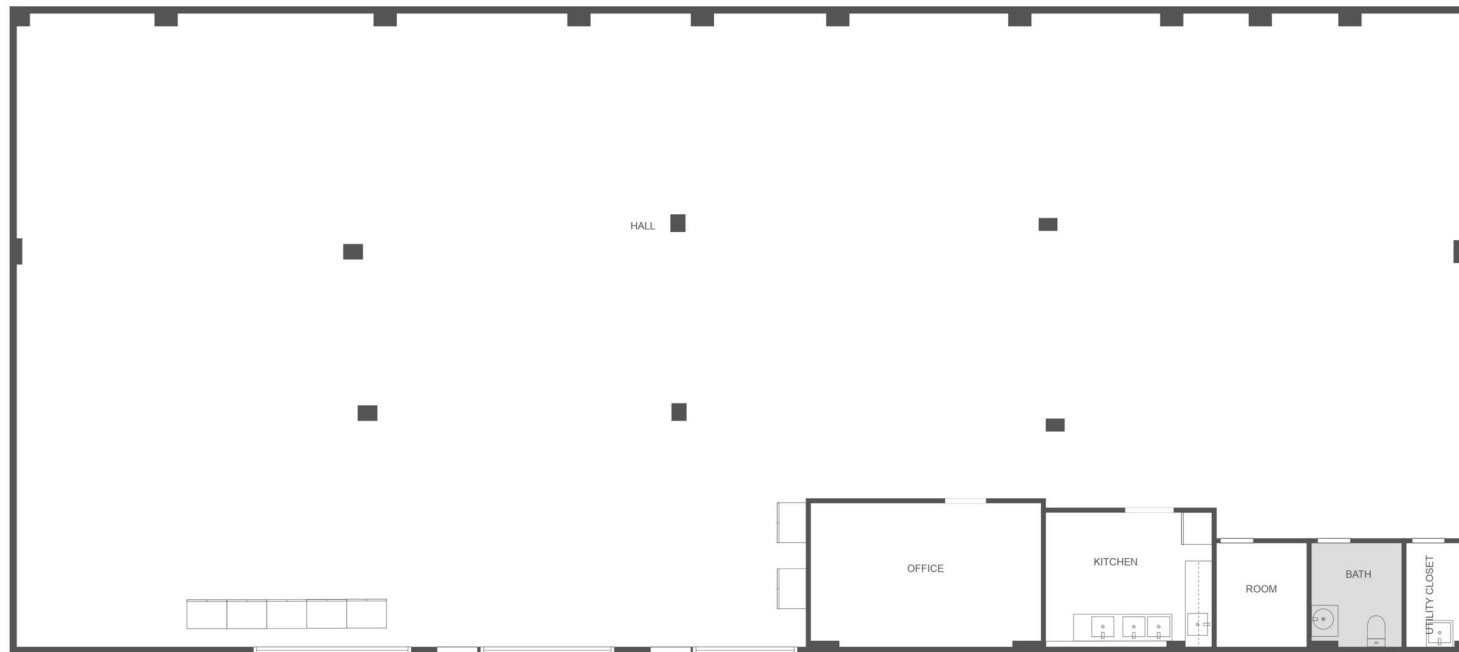


pellego

FOR LEASE

Pacific Liquor Building 405 NAVAL AVE, BREMERTON, WA 98312

Floor Plans



FLOOR PLAN CREATED BY CUBICASA APP. MEASUREMENTS DEEMED HIGHLY RELIABLE BUT NOT GUARANTEED.



**CARLOS JARA**

Commercial Broker

206.429.5380

carlos@jaracommercial.com

**JARA COMMERCIAL**

Kitsap County, Bremerton, WA 98312

206.429.5380 | jaracommercial.com



pellego



FOR LEASE

Pacific Liquor Building 405 NAVAL AVE, BREMERTON, WA 98312

Additional Photos



**CARLOS JARA**

Commercial Broker

206.429.5380

carlos@jaracommercial.com

**JARA COMMERCIAL**

Kitsap County, Bremerton, WA 98312

206.429.5380 | jaracommercial.com



pellego



FOR LEASE

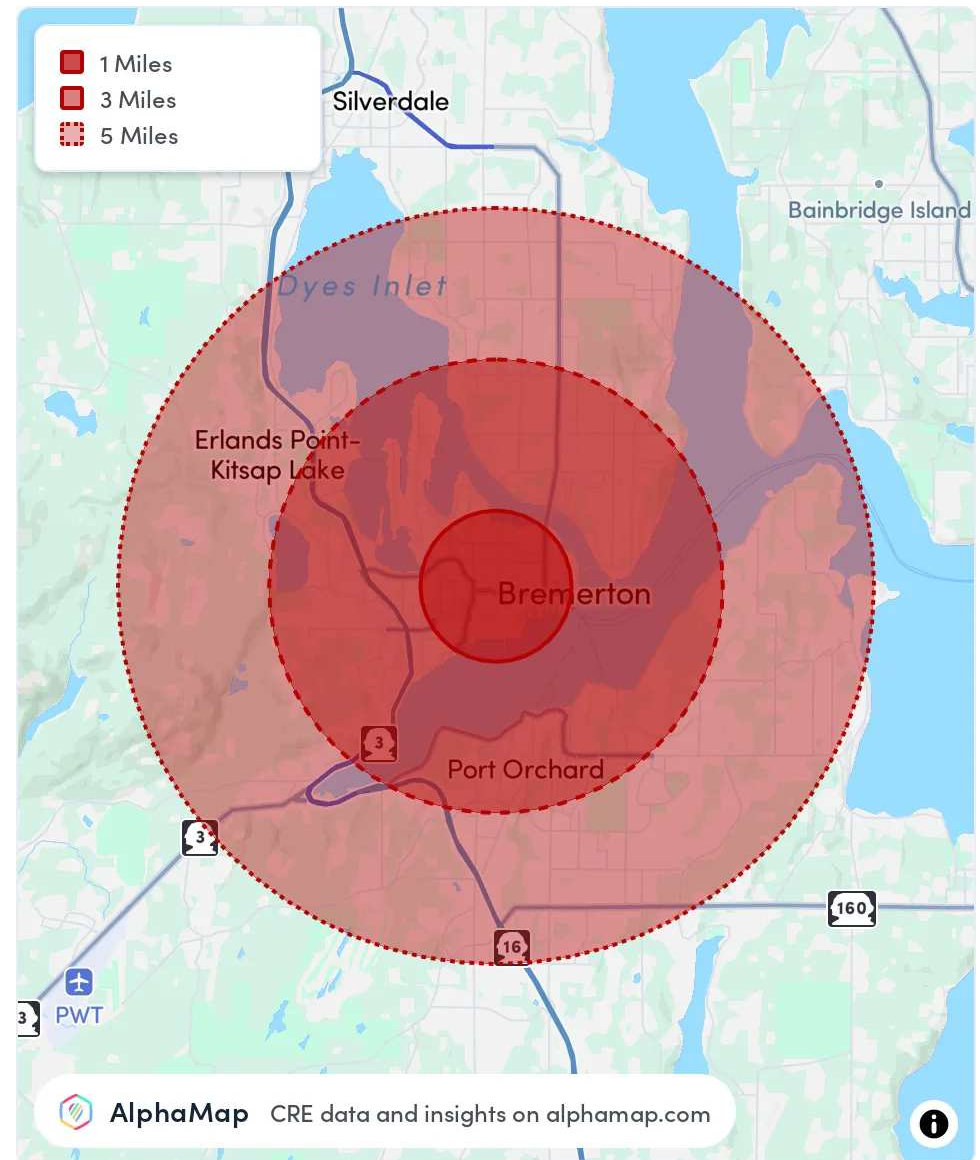
Pacific Liquor Building 405 NAVAL AVE, BREMERTON, WA 98312

Area Analytics

POPULATION	1 MILE	3 MILES	5 MILES
Total Population	17,364	63,353	127,972
Average Age	35	39	39
Average Age (Male)	34	38	38
Average Age (Female)	35	40	41

HOUSEHOLD & INCOME	1 MILE	3 MILES	5 MILES
Total Households	5,561	24,266	48,439
Persons per HH	3.1	2.6	2.6
Average HH Income	\$96,739	\$96,232	\$106,364
Average House Value	\$422,105	\$467,327	\$515,674
Per Capita Income	\$31,206	\$37,012	\$40,909

Map and demographics data derived from AlphaMap



**CARLOS JARA**

Commercial Broker

206.429.5380

carlos@jaracommercial.com

**JARA COMMERCIAL**

Kitsap County, Bremerton, WA 98312

206.429.5380 | jaracommercial.com



pellego