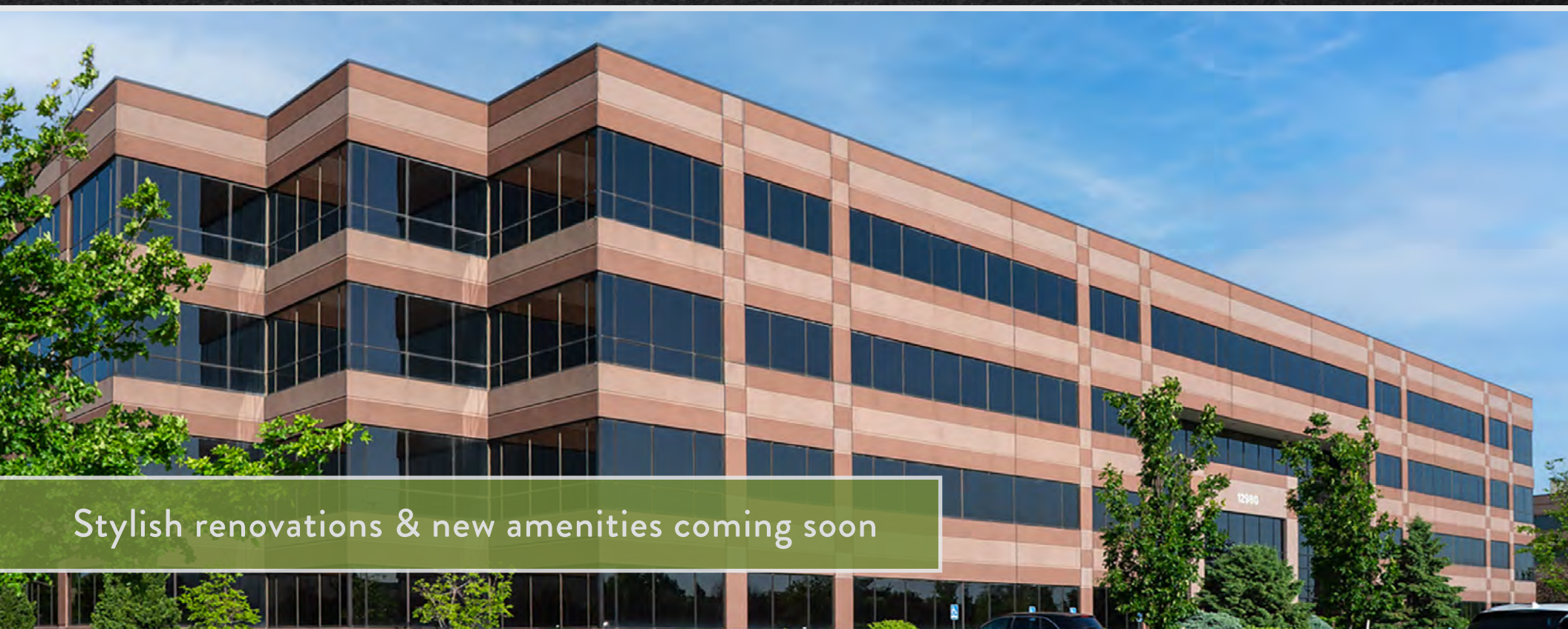




THE FOSTER

MODERN WORK + WELLNESS



Stylish renovations & new amenities coming soon

OFFICE SPACE AVAILABLE FOR LEASE | Ability to accommodate tenants from 1,100 SF-55,000+ SF
12980 Foster Street, Overland Park, Kansas

Colliers



Introducing The Foster

Located at 12980 Foster Street in South Overland Park, **The Foster** is being reimagined as a premier workplace destination—blending modern design with a strong focus on tenant wellness. This transformation will establish a new standard for the workplace experience in Kansas City’s premier suburban location.

Upcoming renovations include:

Modernized lobby with local art infusion.

The ‘Foster Fit’ club-level fitness center w/ locker rooms & showers.

New outdoor leisure & workspaces.

Trail connected bike amenities.

Health focused grab & go.

On-site property management.

{renderings coming soon}



PROPERTY HIGHLIGHTS

Overview

- Class A office building totaling 119,143 SF
- Ability to accommodate tenants from 1,100 SF to 55,000+ SF
- Entire 3rd floor potentially available (30,118 SF)

Building Features & Recent Upgrades

- Coming soon: Major renovation underway to modernize property to contemporary, hospitality standards
- New outdoor patio with Wi-Fi connectivity
- Signage opportunities for large tenants

Health & Wellness Features

- Coming soon: 'Foster Fit' fitness center with locker rooms and showers
- Direct access to the 26-mile Indian Creek Trail, miles of biking and jogging

Floor Plate & Space Efficiency

- Large floor plates, over 30,000 SF
- 14' slab-to-slab ceiling heights
- 65' bay depths with extensive ribbon glass
- 4.4/1000 SF parking ratio

Location & Accessibility

- Exceptional access immediately south of I-435 and minutes from Highway 69
- Close proximity to luxury residential, top-rated public schools, and premier retail and entertainment along 135th Street
- Overland Park is ranked by numerous sources as one of the best communities in the U.S.





PROPERTY HIGHLIGHTS

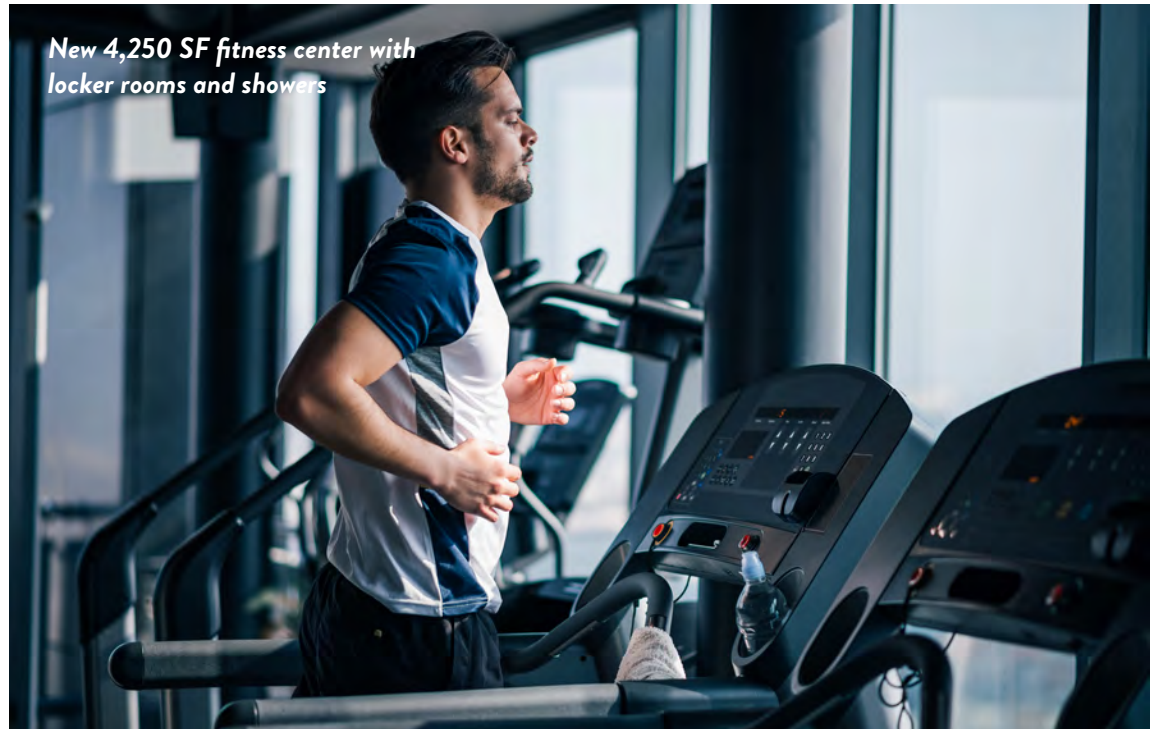


INDOOR + OUTDOOR WELLNESS

The Foster was redesigned with health and wellness as a central focus, recognizing that a healthier team is a happier, more productive team.

Foster-Fit is a best-in-class indoor-outdoor fitness experience, including a new 4,250 SF on-site fitness center with lockers and showers, plus immediate access to the 20+ mile Indian Creek Trail System, enhanced by new amenities that allow for active use.

New 4,250 SF fitness center with locker rooms and showers



Direct access to the 26-mile Indian Creek Trail





AVAILABILITY | FIRST FLOOR

THE FOSTER





AVAILABILITY | SECOND FLOOR

THE FOSTER

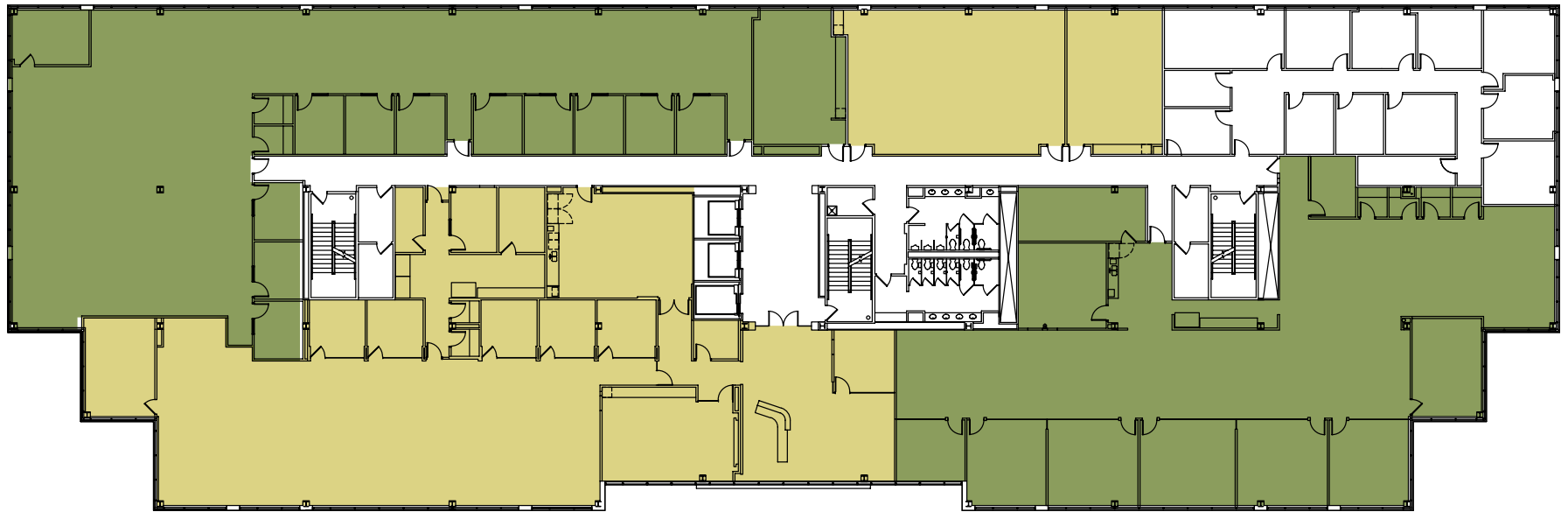




AVAILABILITY | THIRD FLOOR

Suite 350/355
8,335 RSF

Suite 360/365
2,265 RSF



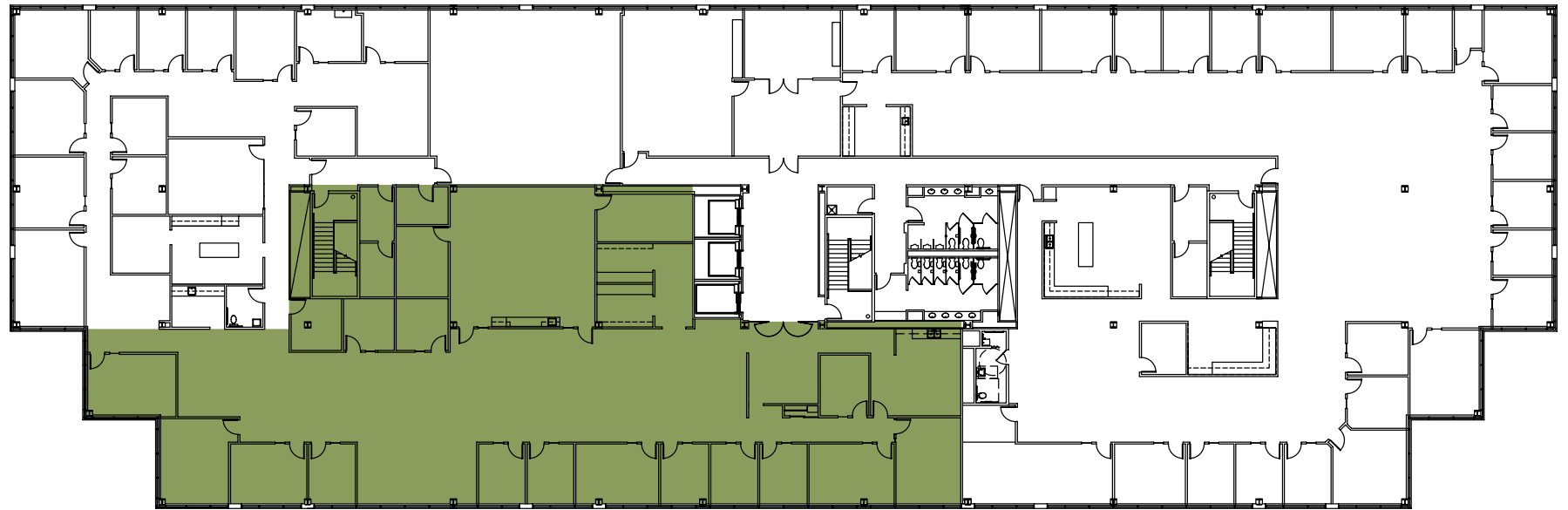
Suite 300
8,535 RSF

Suite 380
7,849 RSF



AVAILABILITY | FOURTH FLOOR

THE FOSTER



Suite 410
9,670 RSF



THE FOSTER

MODERN WORK + WELLNESS

For more information, contact:

Ryan Biery, SIOR

Senior Vice President

ryan.biery@colliers.com

+1 913 908 7316

RC Jensen, CCIM

Vice President

rc.jensen@colliers.com

+1 913 271 2842

This document/email has been prepared by Colliers for advertising and general information only. Colliers makes no guarantees, representations or warranties of any kind, expressed or implied, regarding the information including, but not limited to, warranties of content, accuracy and reliability. Any interested party should undertake their own inquiries as to the accuracy of the information. Colliers excludes unequivocally all inferred or implied terms, conditions and warranties arising out of this document and excludes all liability for loss and damages arising there from. This publication is the copyrighted property of Colliers and /or its licensor(s). © 2026. All rights reserved. This communication is not intended to cause or induce breach of an existing listing agreement. Colliers International OR LLC



4900 Main Street, Suite 400
Kansas City, MO 64113
+1 816 531-5303
colliers.com/kansascity