



1707 + 1723 Havasupai

Candice A Donofrio, CCSS

AZ BR528507000

Owner/Designated Broker

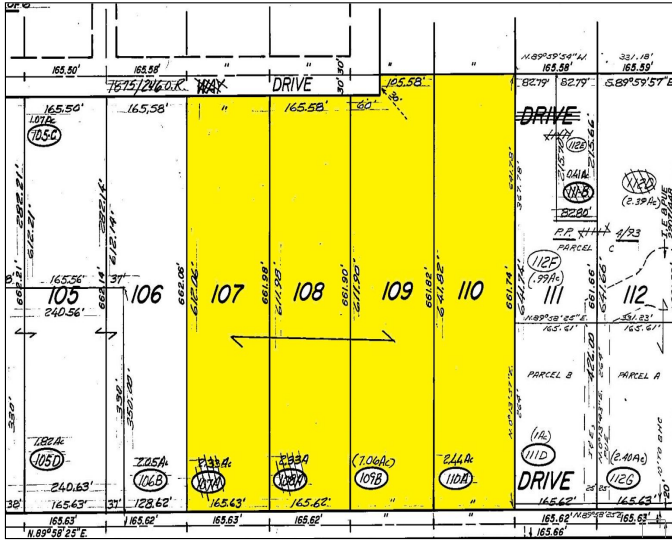
928-201-4242

Candice@CREBHC.com

1707 + 1723 Havasupai | Bullhead City, AZ 86442

- ❖ 9.5 VIEW Acres Overlooking Center Of Town
- ❖ Sewer Lateral Is In, Per BHC Capacity Fees WAIVED
- ❖ Water, Electric to Property
- ❖ Offered At \$995,000





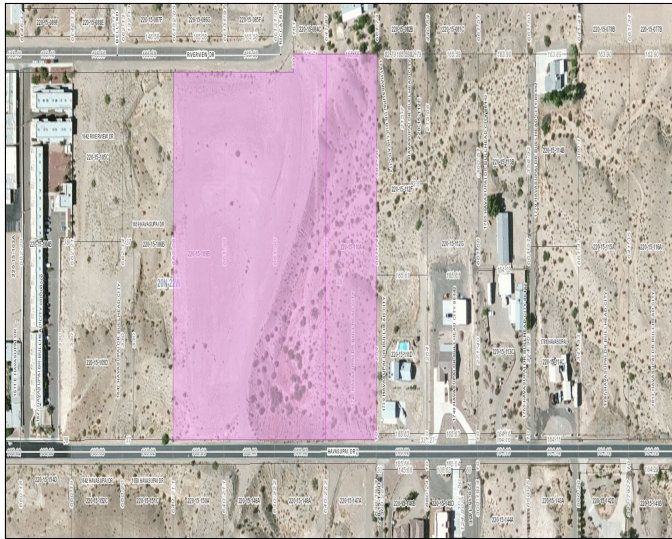
DEVELOPERS! RARE, amazing 9.5 acre ELEVATED, VIEW property for multifamily development. Frontage on both Havasupai and Riverview.

Excellent location just off Miracle Mile, overlooking the center of town between Riverview Mall and Walmart Supercenter.

According to BHC Engineering, lateral is in and sewer capacity fees have been waived for this property; per EPCOR, water lines also in.

Offering includes 1707 and 1723 Havasupai; 1707, 7.06 acres is zoned R2 Multifamily and 1723, 2.44 acres is zoned R1L (SFR).

- 100 mi S of Las Vegas NV
- 40 mi SW of Kingman AZ
- 8 mi SW of Laughlin, NV
- 8 mi W of Laughlin Bullhead International Airport
- 2 blocks E of Highway 95
- 18 mi N of I-40
- 240 mi NW of Phoenix



Call, Text Or E-mail

For Full Info Package

928-201-4242 cell/txt

Candice@CREBHC.com



Candice A Donofrio, CCSS
 AZ BR528507000
 Owner/Designated Broker
 928-201-4242
 Candice@CREBHC.com