

***Little River
Veterinary Clinic***

4000 Burke Station Road Fairfax, VA 22032

Veterinarian/ Medical/ Retail Property For Lease

Kevin Brandes //
kb@onestreet.one
240.813.9344

TABLE OF CONTENTS

PROPERTY SUMMARY	3
PHOTOS	4
ADDITIONAL PHOTOS	5
LAYOUT	6
LOCATION MAP	7
DEMOGRAPHICS MAP & REPORT	8

CONFIDENTIALITY & DISCLAIMER

All materials and information received or derived from ONE Street Commercial Properties its directors, officers, agents, advisors, affiliates and/or any third party sources are provided without representation or warranty as to completeness, veracity, or accuracy, condition of the property, compliance or lack of compliance with applicable governmental requirements, developability or suitability, financial performance of the property, projected financial performance of the property for any party's intended use or any and all other matters.

Neither ONE Street Commercial Properties its directors, officers, agents, advisors, or affiliates makes any representation or warranty, express or implied, as to accuracy or completeness of the any materials or information provided, derived, or received. Materials and information from any source, whether written or verbal, that may be furnished for review are not a substitute for a party's active conduct of its own due diligence to determine these and other matters of significance to such party. ONE Street Commercial Properties will not investigate or verify any such matters or conduct due diligence for a party unless otherwise agreed in writing.

EACH PARTY SHALL CONDUCT ITS OWN INDEPENDENT INVESTIGATION AND DUE DILIGENCE.

Any party contemplating or under contract or in escrow for a transaction is urged to verify all information and to conduct their own inspections and investigations including through appropriate third party independent professionals selected by such party. All financial data should be verified by the party including by obtaining and reading applicable documents and reports and consulting appropriate independent professionals. ONE Street Commercial Properties makes no warranties and/or representations regarding the veracity, completeness, or relevance of any financial data or assumptions. ONE Street Commercial Properties does not serve as a financial advisor to any party regarding any proposed transaction. All data and assumptions regarding financial performance, including that used for financial modeling purposes, may differ from actual data or performance. Any estimates of market rents and/or projected rents that may be provided to a party do not necessarily mean that rents can be established at or increased to that level. Parties must evaluate any applicable contractual and governmental limitations as well as market conditions, vacancy factors and other issues in order to determine rents from or for the property.

Legal questions should be discussed by the party with an attorney. Tax questions should be discussed by the party with a certified public accountant or tax attorney. Title questions should be discussed by the party with a title officer or attorney. Questions regarding the condition of the property and whether the property complies with applicable governmental requirements should be discussed by the party with appropriate engineers, architects, contractors, other consultants and governmental agencies. All properties and services are marketed by ONE Street Commercial Properties in compliance with all applicable fair housing and equal opportunity laws.



PROPERTY DESCRIPTION

ONE Street Commercial Properties is proud to present a turnkey medical office totaling 2,380 square feet, ideal for animal care providers or related medical users seeking a plug-and-play opportunity in Fairfax County. The space features an existing specialty layout that allows an incoming tenant to minimize upfront build-out costs and expedite occupancy, making it well suited for both owner-users and expanding practices. Situated within a well-established and easily accessible submarket, the property offers strong visibility, convenient client access, and close proximity to surrounding residential neighborhoods that support a consistent customer base.

PROPERTY HIGHLIGHTS

- Turnkey space with existing veterinary layout
- Burke submarket, Fairfax County location
- Access to Route 652, Route 123, Route 286 & I-495
- Dense surrounding residential base and nearby amenities

OFFERING SUMMARY

Lease Rate:	Subject to Offer
Available SF:	2,380 SF
Lot Size:	20,672 SF
Vehicle Count Per Day	40,000

DEMOGRAPHICS	0.3 MILES	0.5 MILES	1 MILE
Total Households	345	1,233	3,891
Total Population	961	3,443	10,836
Average HH Income	\$226,968	\$229,682	\$212,575

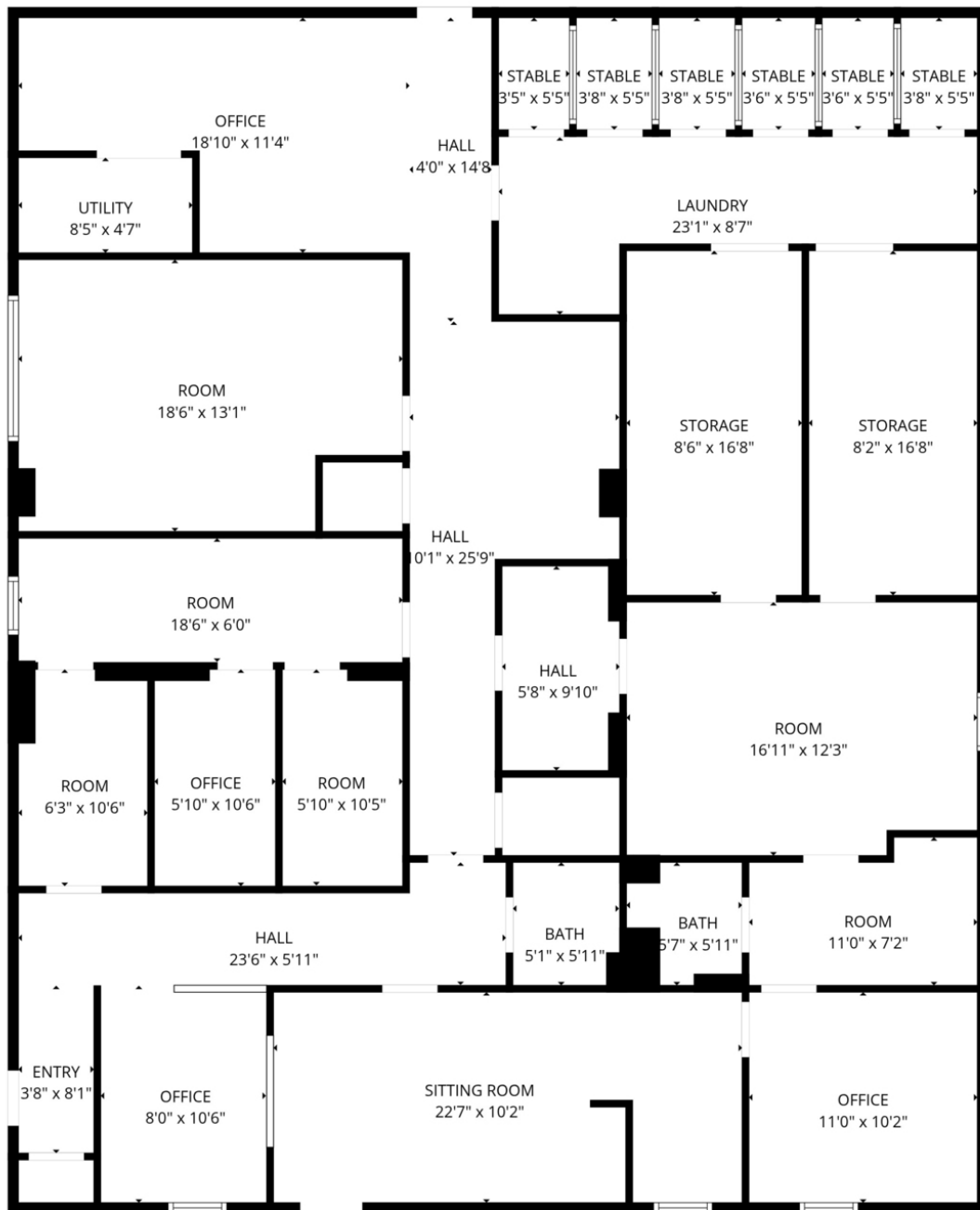
Kevin Brandes //
kb@onestreet.one
240.813.9344



Kevin Brandes //
kb@onestreet.one
240.813.9344

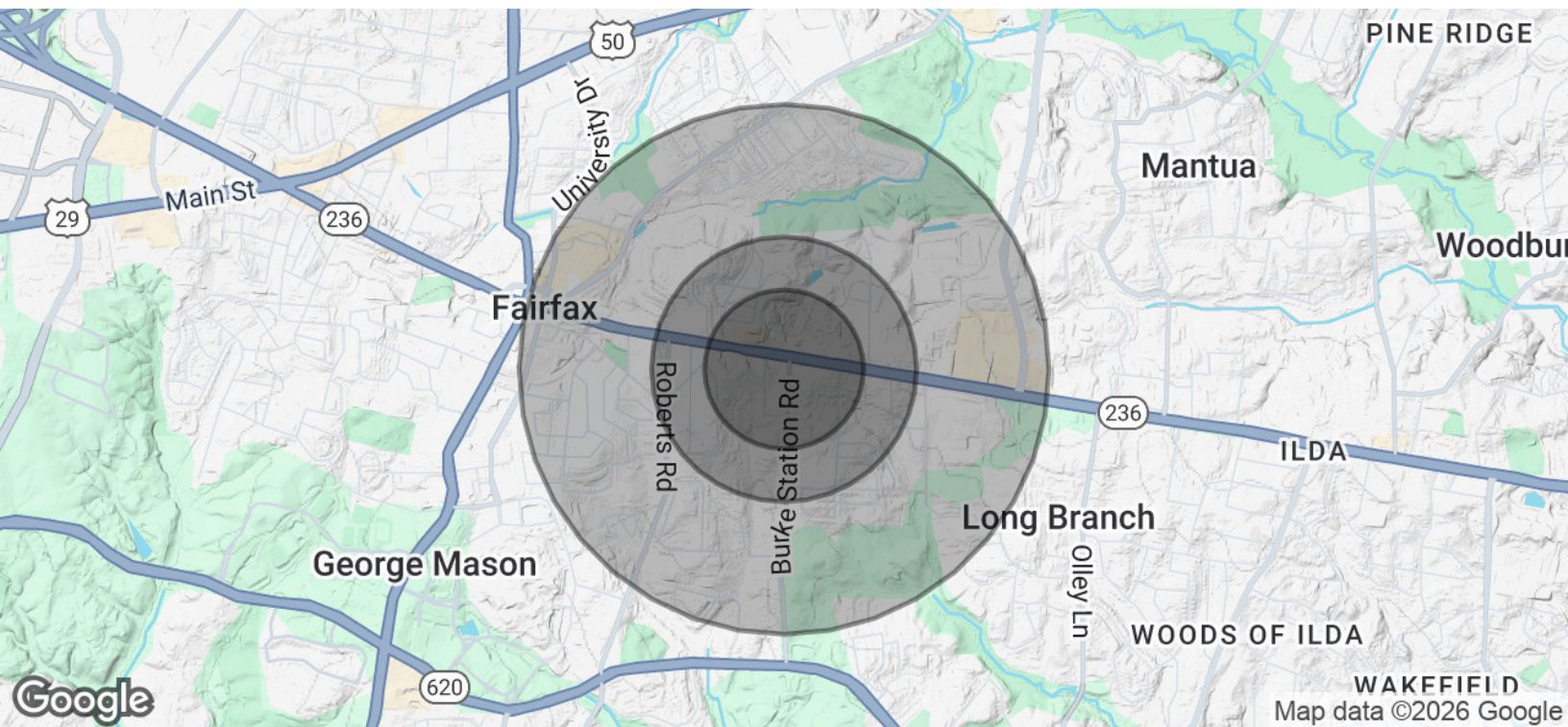


Kevin Brandes //
kb@onestreet.one
240.813.9344





Kevin Brandes //
kb@onestreet.one
240.813.9344



POPULATION	0.3 MILES	0.5 MILES	1 MILE
Total Population	961	3,443	10,836
Average Age	41	41	42
Average Age (Male)	39	40	41
Average Age (Female)	42	43	43

HOUSEHOLDS & INCOME	0.3 MILES	0.5 MILES	1 MILE
Total Households	345	1,233	3,891
# of Persons per HH	2.8	2.8	2.8
Average HH Income	\$226,968	\$229,682	\$212,575
Average House Value	\$887,524	\$875,656	\$821,182

TRAFFIC COUNTS
40,000/day

Demographics data derived from AlphaMap

Kevin Brandes //
kb@onestreet.one
240.813.9344