



Food Manufacturing Facility

For Lease | 720 Metropolitan Parkway | Atlanta, GA

90,000 SF Facility Available
All equipment remains on site

Contact Us:

Turner Wischart
OnPace Cold
+1 770 654 4334
turner.wischart@onpacepartners.com

Chris Cummings
OnPace Cold
+1 678 612 9958
chris.cummings@onpacepartners.com

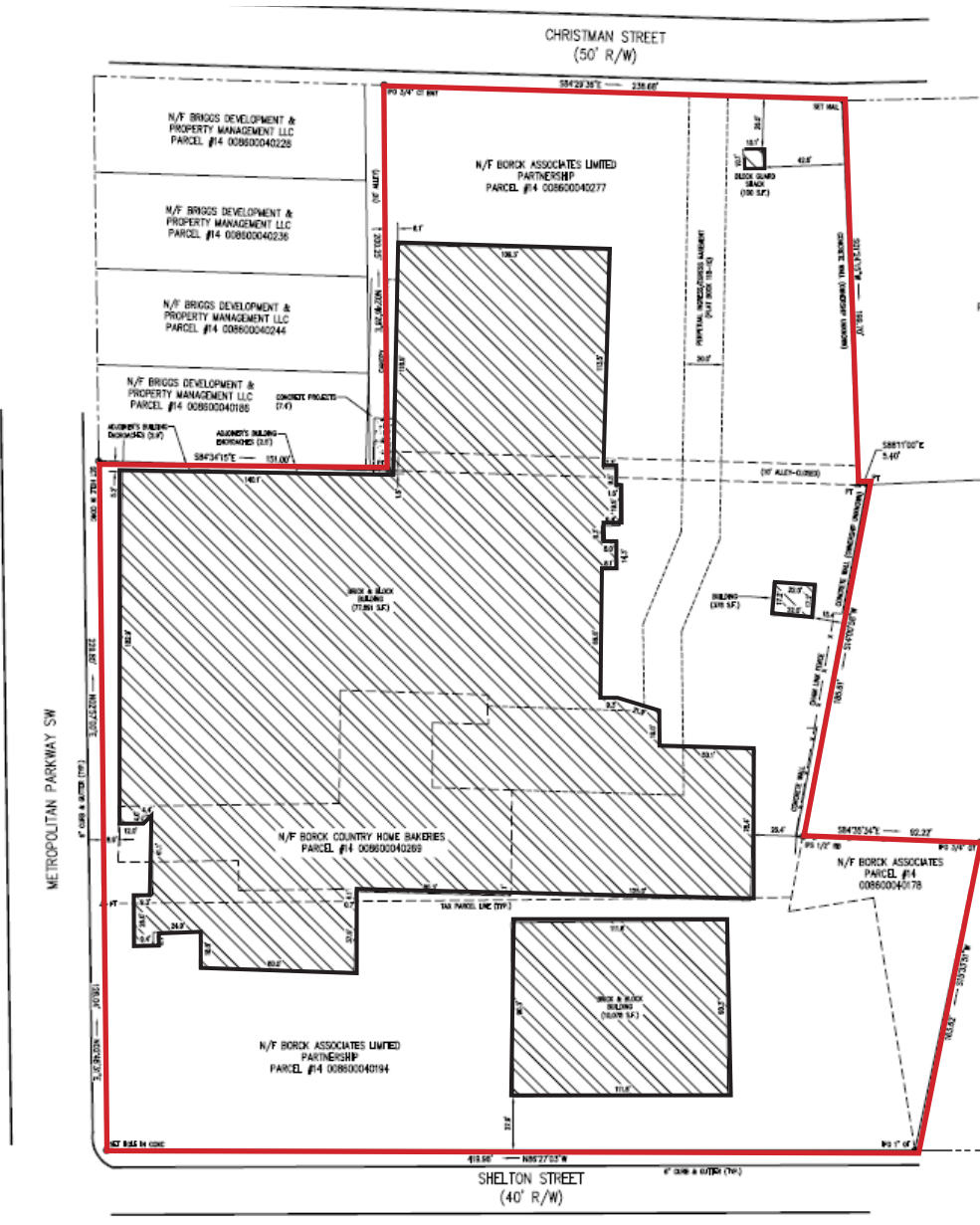
Cater Cosgrove
OnPace Cold
+1 404 317 0930
cater.cosgrove@onpacepartners.com

720 Metropolitan Parkway | Atlanta, GA

Food Manufacturing Facility

FACILITY OVERVIEW:

Total Building SF:	±90,000
Total Acres:	4.4
Available SF:	±90,000
Processing SF:	±56,000 (Partially HVAC'd)
Freezer SF:	±6,650 + 3 Spiral Freezer
Cooler SF:	±1,900
Cold Docks SF:	±1,300
Office SF:	±9,000
Misc./Support SF:	±7,300 (test kitchen, parts storage, mech. shop)
Sprinkler System	Sprinklered
Ceiling Heights:	14'+
Dock Door(s):	6
Drive In Door(s):	3
Lighting:	LED's
Refrigeration	Ammonia
Electrical	1200 AMP.
Parking:	82+ auto; trailer parking available
Security:	Secured site with guard shack
Zoning:	I-2 Industrial

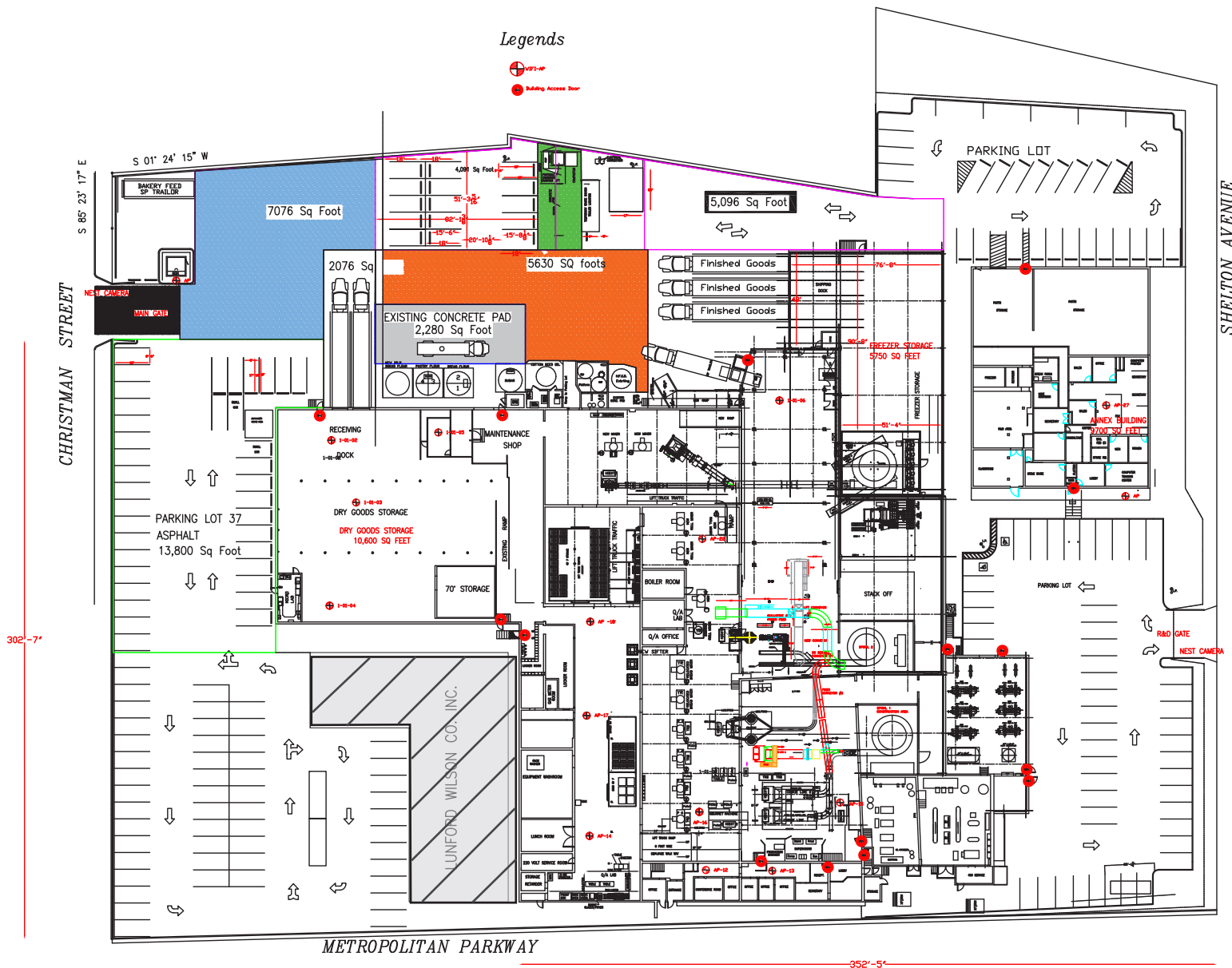


720 Metropolitan Parkway | Atlanta, GA

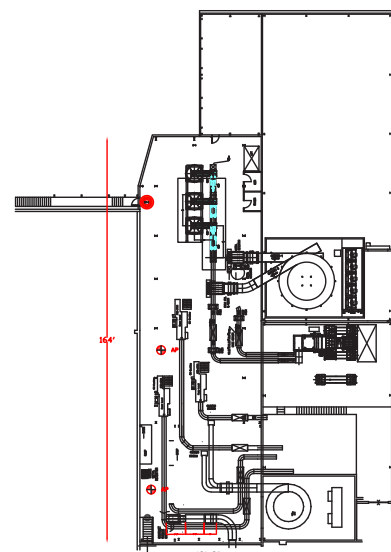
Site Plan

Legends

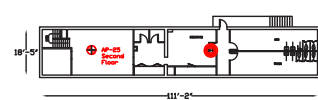
- ⊕ VENT-UP
- Building Access Door



Second Floor Packaging



Main Office Second Floor



This specialized bakery facility includes significant existing infrastructure and equipment, offering a unique opportunity to reduce startup time and capital investment.



Key Features:

- Floor Drains: Throughout
- Racking: Push back
- Wastewater Treatment: On site
- R&D: On site
- Processing Lines: Cookie Line, Biscuit Line, Bread & Roll Line
- Equipment: Mixer, hoppers, troughs, conveyors, palletizers, ovens

720 Metropolitan Parkway | Atlanta, GA
Building Photos

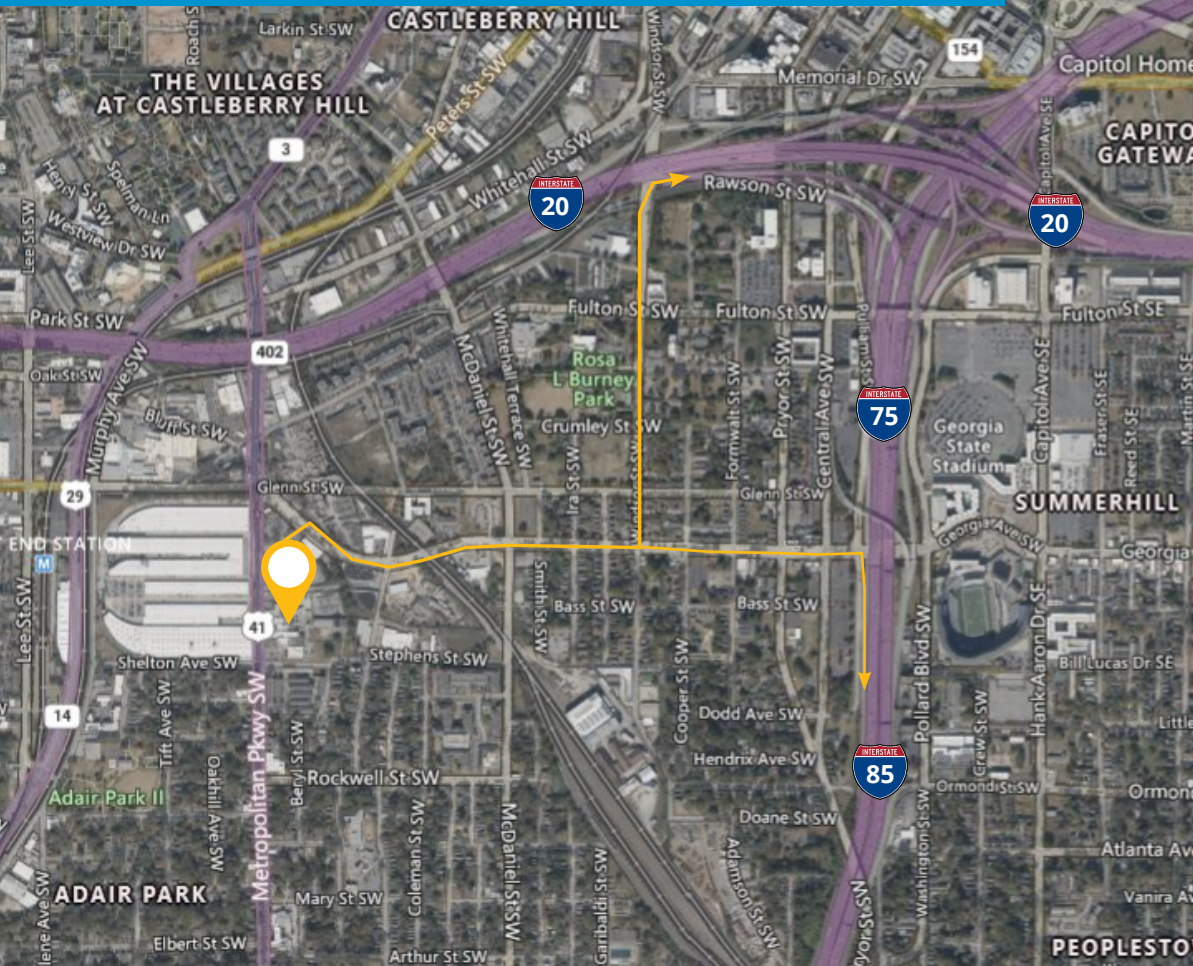


720 Metropolitan Parkway | Atlanta, GA
Building Photos



720 Metropolitan Parkway | Atlanta, GA

Food Manufacturing Facility



This single-tenant manufacturing facility located at 720 Metropolitan Parkway in Atlanta, GA was purpose built for Country Home Bakers, a wholly-owned subsidiary of J&J Snack Foods Corporation. The space has been vacant less than six months. **All equipment remains on site.** This is a specialized bakery facility including freezer, processing distribution, R&D, and office space.

LOCATION & ACCESS

- ± 3.5 mile to the Downtown Connector (I-75/I-85)
- ± 8 miles to Hartsfield-Jackson Atlanta Int'l Airport
- ± 12 miles to I-285
- Direct frontage on Metropolitan Parkway
- Served by MARTA bus



Subject Property is located ±1.5 mi from I-20

Contact Us:

Turner Wisheart
OnPace Cold
+1 770 654 4334
turner.wisheart@onpacepartners.com

Chris Cummings
OnPace Cold
+1 678 612 9958
chris.cummings@onpacepartners.com

Cater Cosgrove
OnPace Cold
+1 404 317 0930
cater.cosgrove@onpacepartners.com

