

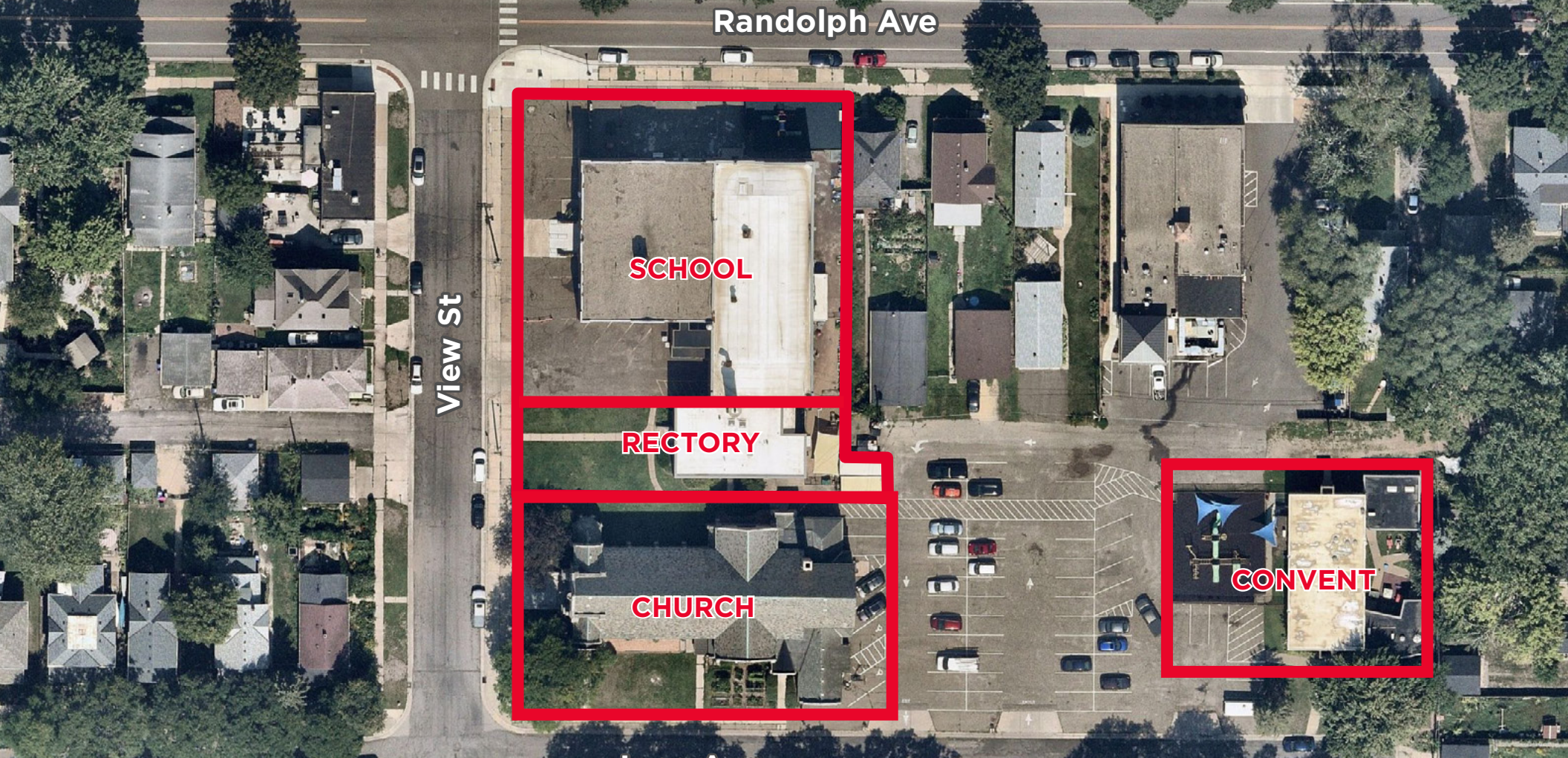
RELIGIOUS CAMPUS FOR SALE



ST. JAMES

496 VIEW STREET
ST. PAUL, MN 55102





PROPERTY SUMMARY

Cushman & Wakefield is pleased to present the following opportunity to lease or purchase the St. James Campus in St. Paul, MN.

The St. James Campus is located 1.73 acres, offers a unique opportunity to various users/developers, including but not limited to:

- Education Groups
- Nonprofits
- Religious Organizations
- Developers

The property is comprised of four (4) building structures, which includes a school, church, rectory, and convent.

SALE PRICE
NEGOTIABLE

LEASE RATE
NEGOTIABLE

PARCEL SIZE
+/- 1.73 Acres

CURRENT BUILDINGS
School - 31,008 SF
Church - 17,148 SF
Convent - 6,526 SF · Rectory - 6,132 SF

NUMBER OF FLOORS
3

ZONING
H2 Residential

YEAR BUILT
1938

PARKING
Approximately 50 surface stalls

PROPERTY TAX
Tax Exempt

CHURCH



FELLOWSHIP HALL



KITCHEN



CHURCH





SCHOOL



FEATURES

- 31,008 SF
- School built in the 1950's
- Gymnasium
- Cafeteria & Kitchen
- Outdoor Play Area
- Ongoing Capital Investment into Building
- Ample Parking



CHURCH



FEATURES

- 17,148 SF
- Built in 1938
- Additional amenities include; fellowship hall, choir loft, stained glass windows, elevator, walk-in cooler, and church/kitchen equipment



CONVENT



FEATURES

- 6,526 SF
- Built in the 1950's
- Two story building converted to a daycare facility
- Used as a daycare
- Additional amenities include; kitchen, laundry, outdoor play area and ample parking



RECTORY



FEATURES

- 6,132 SF
- Built in 1938
- Two story building with bedrooms, bathrooms and kitchen
- Used as a rectory and offices
- Additional amenities include; covered entry and kitchen equipment





FOR SALE

ST. JAMES

496 VIEW STREET
ST. PAUL, MN 55102

CONTACT

SAM GLEASON

Associate

+1 952 241 1111

sam.gleason@cushwake.com

©2025 Cushman & Wakefield. All rights reserved. The information contained in this communication is strictly confidential. This information has been obtained from sources believed to be reliable but has not been verified. NO WARRANTY OR REPRESENTATION, EXPRESS OR IMPLIED, IS MADE AS TO THE CONDITION OF THE PROPERTY (OR PROPERTIES) REFERENCED HEREIN OR AS TO THE ACCURACY OR COMPLETENESS OF THE INFORMATION CONTAINED HEREIN, AND SAME IS SUBMITTED SUBJECT TO ERRORS, OMISSIONS, CHANGE OF PRICE, RENTAL OR OTHER CONDITIONS, WITHDRAWAL WITHOUT NOTICE, AND TO ANY SPECIAL LISTING CONDITIONS IMPOSED BY THE PROPERTY OWNER(S). ANY PROJECTIONS, OPINIONS OR ESTIMATES ARE SUBJECT TO UNCERTAINTY AND DO NOT SIGNIFY CURRENT OR FUTURE PROPERTY PERFORMANCE.

