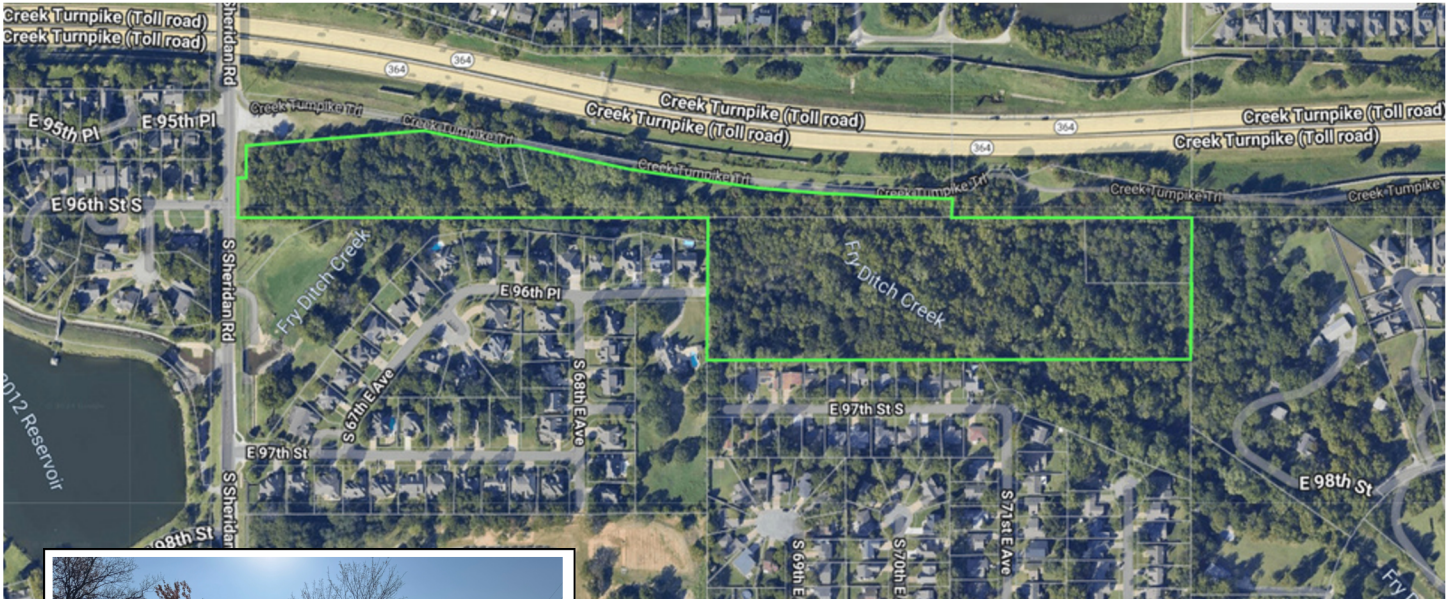


For Sale

18 Acres - Will Divide

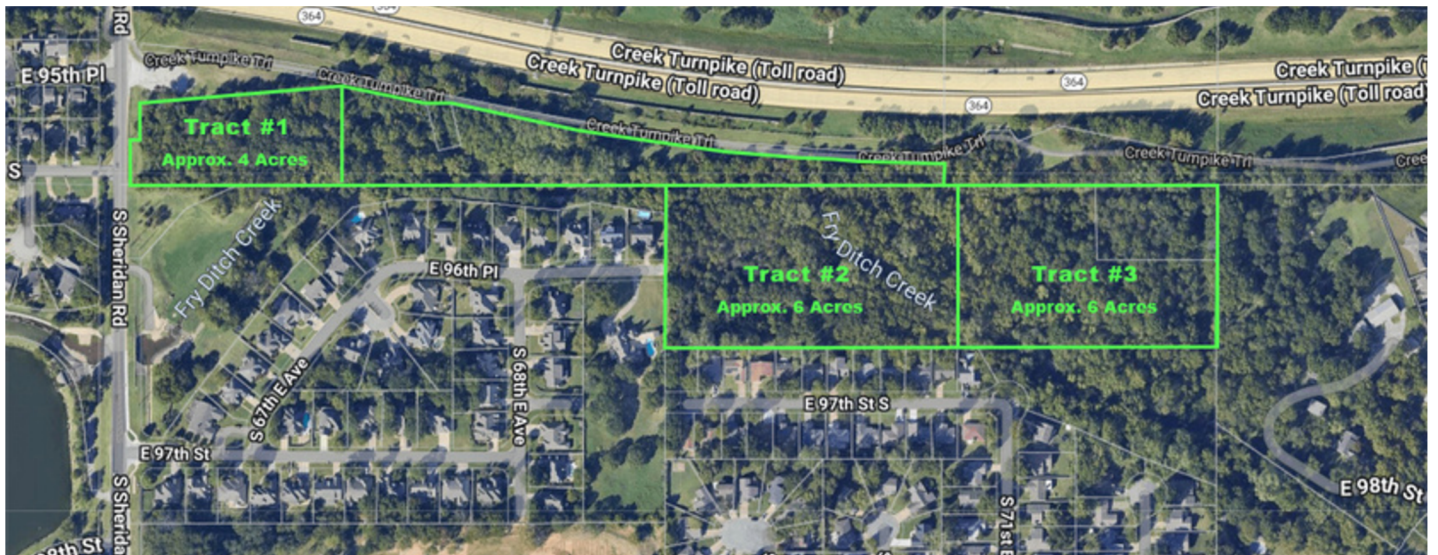
9600 S Sheridan Rd
Tulsa, OK 74137



Prime Development Opportunity with Frontage on S Sheridan Road. Up to 18 acres of prime real estate on South Sheridan Road in South Tulsa near the highly desired intersection of E 101st St & S Sheridan Road, this property is situated just south of the Creek Turnpike.

Located in the highly desirable Jenks School District, this property offers a unique opportunity for residential or commercial development. With direct access to Tulsa's expansive walk/run/bike trail system, this area is ideal for developments that prioritize both connectivity and lifestyle.

This location's proximity to quality schools, recreational amenities, and economic centers makes it a high-demand area for developers looking to capitalize on Tulsa's strong growth trends.



Tract	Price	Acreage
Total Package	\$1,750,000	18 Acres
Tract #1	\$750,000	3-4 Acres
Tract #2	\$650,000	5-6 Acres
Tract #3	\$350,000	5-6 Acres



Contact

Brian Frere, KW Commercial

+1 918 298 6900

brian@brianfrere.com

