



Modern Distribution Facility for Sale

**4805 CAMPBELL DRIVE
FORT SCOTT, KANSAS**

Property Highlights

- 248,785 (±) sf distribution/warehouse building
- 35 (±) acres
- 7,564 (±) sf office space
- 38.5' ceiling height
- Constructed in 1995
- 300 employee parking stalls
- Former food-grade facility
- Sale price \$9,500,000

For information, please contact:

Mark C. Long, SIOR, CCIM, CRE, LEED AP
President and Chief Executive Officer
t 816-512-1011
mlong@nzimmer.com

John F. Hassler, SIOR
Executive Managing Director
t 816-268-4208
jhassler@nzimmer.com

John Faur, CCIM
Director
t 816-268-4243
jfaur@nzimmer.com

1220 Washington Street, Suite 300
Kansas City, MO 64105

nmrkzimmer.com



NEWMARK
ZIMMER

The information contained herein has been obtained from sources deemed reliable but has not been verified and no guarantee, warranty or representation, either express or implied, is made with respect to such information. Terms of sale or lease and availability are subject to change or withdrawal without notice.

4805 CAMPBELL DRIVE, FORT SCOTT, KANSAS

Building Features

- Includes full racking and conveyor system
- Power: 2,000 Amps
- Motion sensor LED lighting
- 41 loading docks (equipped with pit levelers, shelters, bumpers, and lights)
- One 10'x14' drive-in door
- Large trailer storage area
- Bus duct electrical system
- Warehouse equipped with six (6) HVLS fans
- On-site generator with redundant power
- Fully-fenced perimeter with guard shack and small receiving building
- Key-card access to building
- On-site above ground fuel tank with 12,000 gallon capacity

CONTACT

Mark C. Long, SIOR, CCIM, CRE, LEED AP

President and Chief Executive Officer

t 816-512-1011

mlong@nzimmer.com

nmrkzimmer.com

John F. Hassler, SIOR

Executive Managing Director

t 816-268-4208

jhassler@nzimmer.com

John Faur, CCIM

Director

t 816-268-4243

jfaur@nzimmer.com

NEWMARK
ZIMMER

4805 CAMPBELL DRIVE, FORT SCOTT, KANSAS



CONTACT

Mark C. Long, SIOR, CCIM, CRE, LEED AP

President and Chief Executive Officer

t 816-512-1011

mlong@nzimmer.com

nmrkzimmer.com

John F. Hassler, SIOR

Executive Managing Director

t 816-268-4208

jhassler@nzimmer.com

John Faur, CCIM

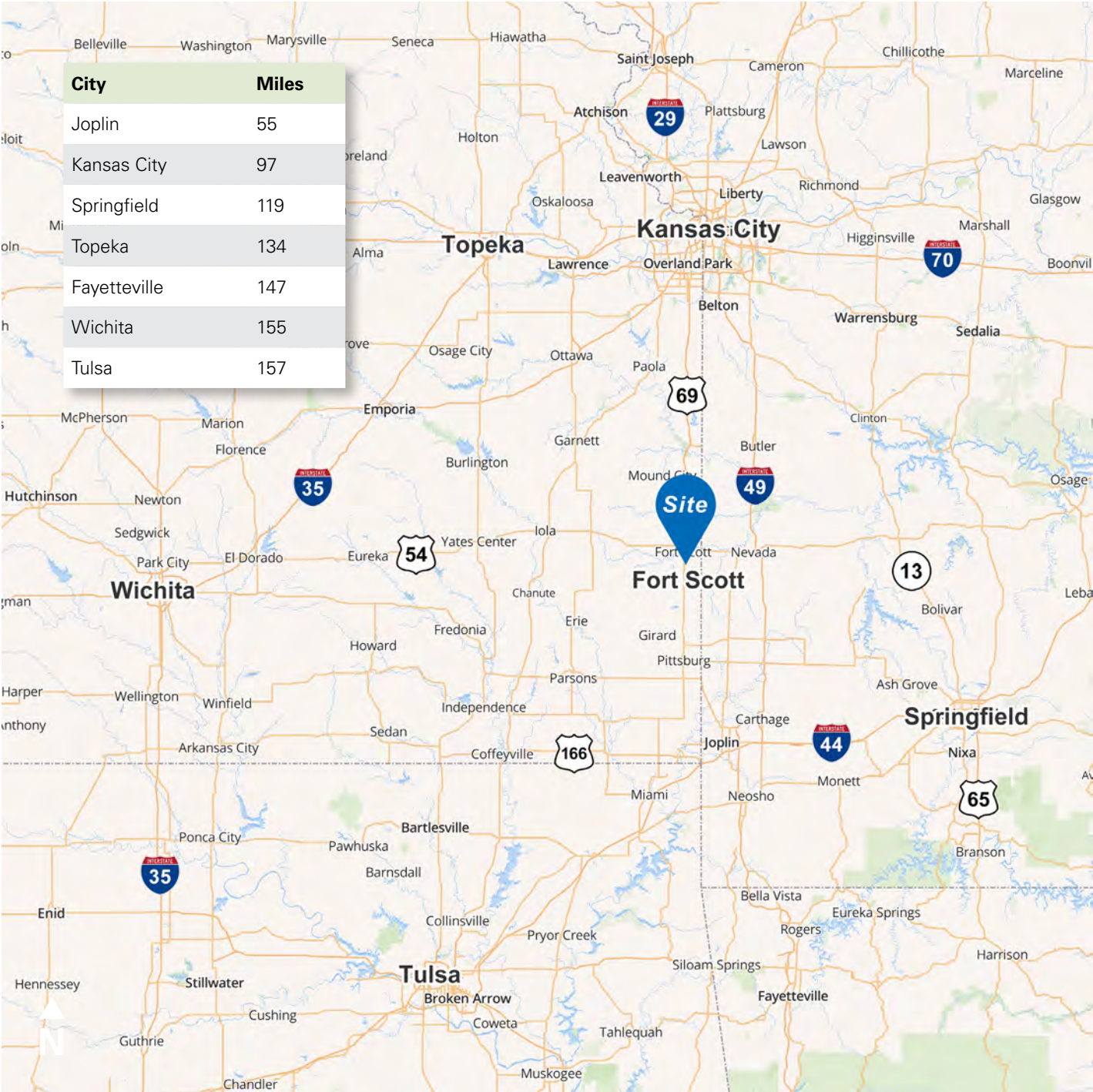
Director

t 816-268-4243

jfaur@nzimmer.com

NEWMARK
ZIMMER

4805 CAMPBELL DRIVE, FORT SCOTT, KANSAS



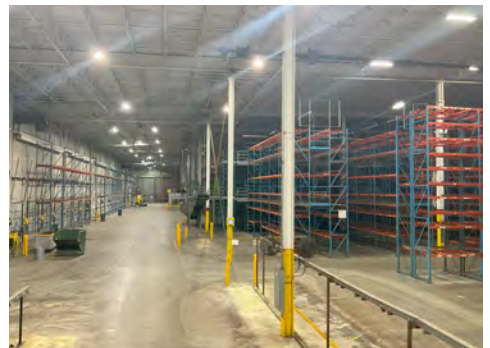
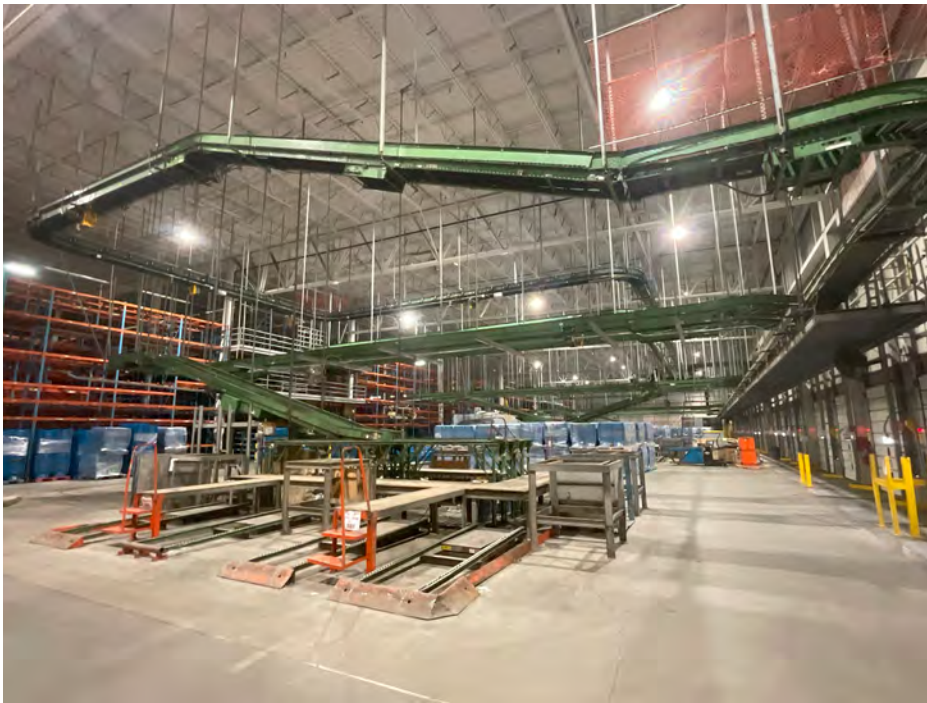
CONTACT

Mark C. Long, SIOR, CCIM, CRE, LEED AP
President and Chief Executive Officer
t 816-512-1011
mlong@nzimmer.com
nmrkzimmer.com

John F. Hassler, SIOR
Executive Managing Director
t 816-268-4208
jhassler@nzimmer.com

John Faur, CCIM
Director
t 816-268-4243
jfaur@nzimmer.com

4805 CAMPBELL DRIVE, FORT SCOTT, KANSAS



CONTACT

Mark C. Long, SIOR, CCIM, CRE, LEED AP

President and Chief Executive Officer

t 816-512-1011

mlong@nzimmer.com

nmrkzimmer.com

John F. Hassler, SIOR

Executive Managing Director

t 816-268-4208

jhassler@nzimmer.com

John Faur, CCIM

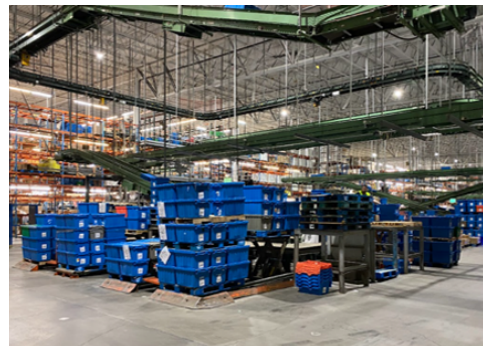
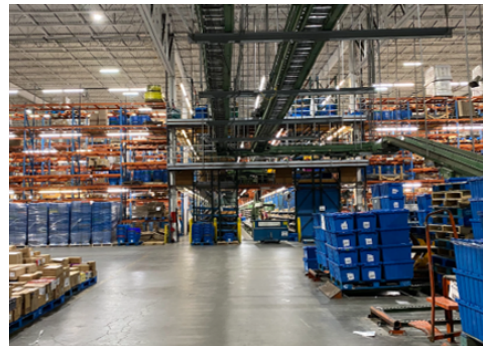
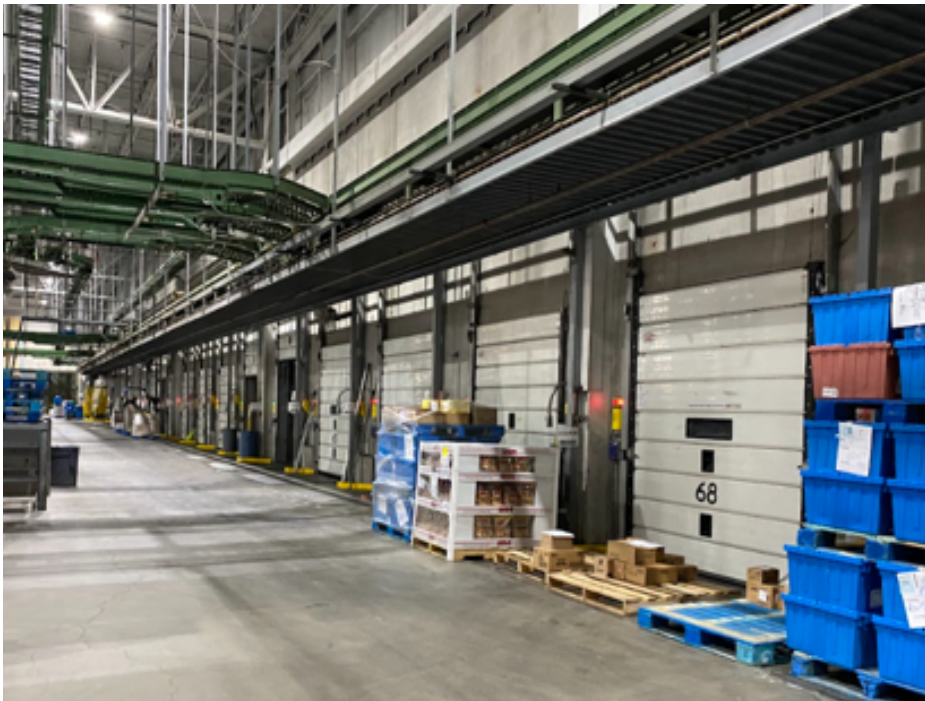
Director

t 816-268-4243

jfaur@nzimmer.com

NEWMARK
ZIMMER

4805 CAMPBELL DRIVE, FORT SCOTT, KANSAS



CONTACT

Mark C. Long, SIOR, CCIM, CRE, LEED AP

President and Chief Executive Officer

t 816-512-1011

mlong@nzimmer.com

nmrkzimmer.com

John F. Hassler, SIOR

Executive Managing Director

t 816-268-4208

jhassler@nzimmer.com

John Faur, CCIM

Director

t 816-268-4243

jfaur@nzimmer.com

NEWMARK
ZIMMER