

# OFFERING MEMORANDUM

## MEDICAL OFFICE CONDOMINIUMS

500 N. KEENE ST.  
COLUMBIA, MO 65203



# PROPERTY OVERVIEW



## 500 KEENE BUILDING DETAILS:

**4-STORY MEDICAL OFFICE BUILDING CONSISTING OF 18 CONDOMINIUMS, SITUATED IN THE HEART OF THE MEDICAL DISTRICT IN COLUMBIA, MISSOURI. 500 KEENE OFFERS IMMEDIATE ACCESS TO THE ADJACENT UNIVERSITY OF MISSOURI WOMEN'S HOSPITAL. THE UNIVERSITY LEASES 35% OF THE TENANTABLE SPACE, THE UNIVERSITY OWNS 40% OF THE TENANTABLE SPACE, AND 25% OF THE TENANTABLE SPACE IS OWNED BY PRIVATE PRACTITIONERS (23% OPHTHALMOLOGY AND OPTOMETRY AND 2% MEDICAL ONCOLOGY)**

FOR MORE INFORMATION PLEASE CONTACT

**Jack L. Maher, III**

**Broker-Officer**

Mobile (573) 489-6860

FAX (815) 550-1506

Email: [maher3@jlmproperties.com](mailto:maher3@jlmproperties.com)

Buttonwood Business Center  
3610 Buttonwood Dr. Suite 200  
Columbia, MO 65201



**MAHER**

COMMERCIAL REAL ESTATE

The information contained herein is for illustration only - dimensions are approximate only. This information is not to be reproduced or used for construction or permitting. The information contained within this brochure is believed to be accurate as of the date of input, however, JLM Properties, Inc., assumes no responsibility for the accuracy of the information provided.

[WWW.MAHERCRE.COM](http://WWW.MAHERCRE.COM)

# INVESTMENT OVERVIEW



## INVESTMENT HIGHLIGHTS:

- ◇ 5 CONDOMINIUMS ON THE SECOND FLOOR AVAILABLE FOR SALE OR FOR LEASE, TOTALING 9,086 S.F. (15% OF TENANTABLE SPACE) TOTAL PACKAGE: \$1,792,885
- ◇ INCOME AVAILABLE VIA UNIVERSITY OF MISSOURI LEASE (207)
- ◇ ALL SUITES (EXCEPT 207) CURRENTLY AVAILABLE FOR LEASE TO MEDICAL PRACTITIONERS.
- ◇ A VIRTUAL TOUR IS AVAILABLE FOR ALL CONDOMINIUMS, PLEASE VISIT [WWW.MAHERCRE.COM](http://WWW.MAHERCRE.COM) UNDER OFFICE OFFERINGS. CALL BROKER FOR IN-PERSON TOUR.

FOR MORE INFORMATION PLEASE CONTACT

**Jack L. Maher, III**

**Broker-Officer**

Mobile (573) 489-6860

FAX (815) 550-1506

Email: [maher3@jlmproperties.com](mailto:maher3@jlmproperties.com)

Buttonwood Business Center  
3610 Buttonwood Dr. Suite 200  
Columbia, MO 65201



**MAHER**

COMMERCIAL REAL ESTATE

The information contained herein is for illustration only - dimensions are approximate only.  
This information is not to be reproduced or used for construction or permitting. The information contained within this brochure is believed to be accurate as of the date of input, however, JLM Properties, Inc., assumes no responsibility for the accuracy of the information provided.

[WWW.MAHERCRE.COM](http://WWW.MAHERCRE.COM)

# INVESTMENT OVERVIEW - SUITE 202



## SUITE 202 INVESTMENT HIGHLIGHTS:

- ◇ For Sale: \$195,000
- ◇ For Lease: \$1,973/Month NNN
- ◇ NNN's estimated at \$6 S.F.
- ◇ 1,184 S.F. medical office condo available for sale or lease on second floor of 500 Keene.
- ◇ Suite provides direct access to first floor of University Women's Hospital.
- ◇ Office vacated by retiring Doctor.
- ◇ Buildout features waiting room, 3 treatment rooms, office, workroom, and reception.
- ◇ Stairwell and elevator access available.
- ◇ Large parking area available
- ◇ Virtual tour at [www.maherere.com](http://www.maherere.com)

FOR MORE INFORMATION PLEASE CONTACT

**Jack L. Maher, III**

**Broker-Officer**

Mobile (573) 489-6860

FAX (815) 550-1506

Email: [maher3@jlmproperties.com](mailto:maher3@jlmproperties.com)

Buttonwood Business Center  
3610 Buttonwood Dr. Suite 200  
Columbia, MO 65201



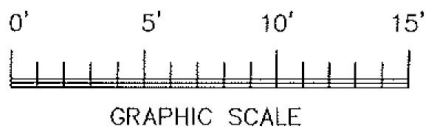
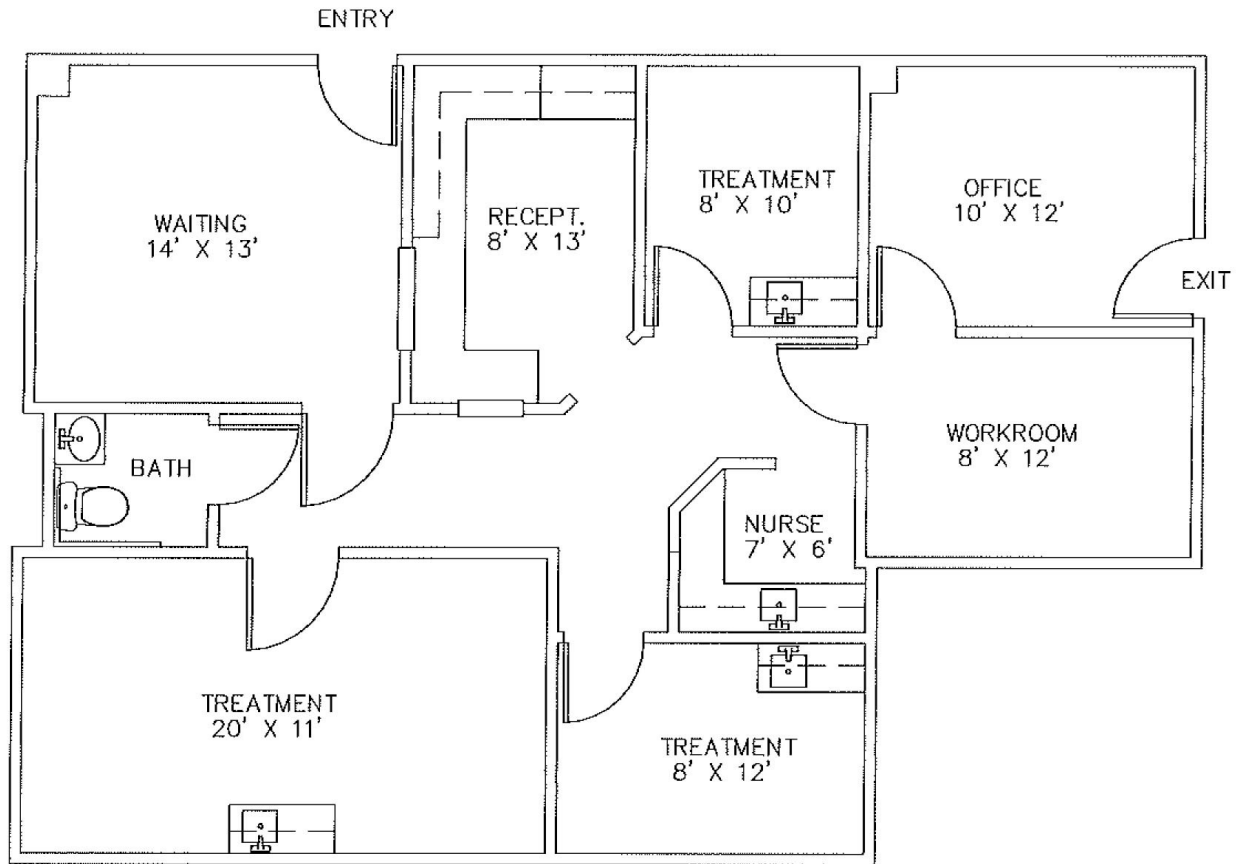
**MAHER**

COMMERCIAL REAL ESTATE

The information contained herein is for illustration only - dimensions are approximate only.  
This information is not to be reproduced or used for construction or permitting. The information contained within this brochure is believed to be accurate as of the date of input, however, JLM Properties, Inc., assumes no responsibility for the accuracy of the information provided.

[WWW.MAHERCRE.COM](http://WWW.MAHERCRE.COM)

# FLOOR PLAN - SUITE 202



500 N. KEENE ST. STE 202

## FLOOR PLAN

11-17-20 1,184 GSF

SCALE: 1/4" = 1'-0" ON 11X17 PAPER

FOR MORE INFORMATION PLEASE CONTACT

**Jack L. Maher, III**

**Broker-Officer**

Mobile (573) 489-6860

FAX (815) 550-1506

Email: [maher3@jlmproperties.com](mailto:maher3@jlmproperties.com)

Buttonwood Business Center  
3610 Buttonwood Dr. Suite 200  
Columbia, MO 65201



# MAHER

COMMERCIAL REAL ESTATE

The information contained herein is for illustration only - dimensions are approximate only.  
This information is not to be reproduced or used for construction or permitting. The information contained within this brochure is believed to be accurate as of the date of input, however, JLM Properties, Inc., assumes no responsibility for the accuracy of the information provided.

[WWW.MAHERCRE.COM](http://WWW.MAHERCRE.COM)

# INVESTMENT OVERVIEW - SUITE 204



## SUITE 204 INVESTMENT HIGHLIGHTS:

- ◇ For Sale: \$228,060
- ◇ Condo Size: 1,267 S.F.
- ◇ For Lease: \$1,900/month NNN
- ◇ NNN's estimated at \$676/month
- ◇ Suite 204 offers 3 private offices with window views facing north, and 2 spaces for an open office concept.
- ◇ Suite can be combined with suite 205 as the units share access from the common area.
- ◇ The Suite offers direct access to the first floor of University of Missouri Women's Hospital.
- ◇ Common area restrooms available.
- ◇ Elevator and stairwell access available.
- ◇ Virtual tour available at [www.mahercre.com](http://www.mahercre.com)

FOR MORE INFORMATION PLEASE CONTACT

**Jack L. Maher, III**

**Broker-Officer**

Mobile (573) 489-6860

FAX (815) 550-1506

Email: [maher3@jlmproperties.com](mailto:maher3@jlmproperties.com)

Buttonwood Business Center  
3610 Buttonwood Dr. Suite 200  
Columbia, MO 65201



**MAHER**

COMMERCIAL REAL ESTATE

The information contained herein is for illustration only - dimensions are approximate only.  
This information is not to be reproduced or used for construction or permitting. The information contained within this brochure is believed to be accurate as of the date of input, however, JLM Properties, Inc., assumes no responsibility for the accuracy of the information provided.

[WWW.MAHERCRE.COM](http://WWW.MAHERCRE.COM)

# INVESTMENT OVERVIEW - SUITE 205



## SUITE 205 INVESTMENT HIGHLIGHTS:

- ◇ For Sale: \$129,240
- ◇ Condo Size: 718 S.F.
- ◇ For Lease: \$1,077/month NNN
- ◇ NNN's estimated at \$402/month
- ◇ Suite 205 offers an open office/lab room, an exam room, and a training room with observation station.
- ◇ Suite can be combined with suite 204 as the units share access from the common area.
- ◇ The Suite offers direct access to the first floor of University of Missouri Women's Hospital.
- ◇ Common area restrooms available.
- ◇ Elevator and stairwell access available.
- ◇ Virtual tour available at [www.mahercre.com](http://www.mahercre.com)

FOR MORE INFORMATION PLEASE CONTACT

**Jack L. Maher, III**

**Broker-Officer**

Mobile (573) 489-6860

FAX (815) 550-1506

Email: [maher3@jlmproperties.com](mailto:maher3@jlmproperties.com)

Buttonwood Business Center  
3610 Buttonwood Dr. Suite 200  
Columbia, MO 65201



**MAHER**

COMMERCIAL REAL ESTATE

The information contained herein is for illustration only - dimensions are approximate only.  
This information is not to be reproduced or used for construction or permitting. The information contained within this brochure is believed to be accurate as of the date of input, however, JLM Properties, Inc., assumes no responsibility for the accuracy of the information provided.

[WWW.MAHERCRE.COM](http://WWW.MAHERCRE.COM)

# INVESTMENT OVERVIEW - SUITE 206



## SUITE 206 INVESTMENT HIGHLIGHTS:

- ◇ For Sale: \$388,080
- ◇ Condo Size: 2,156 S.F.
- ◇ For Lease: \$3,234/month NNN
- ◇ NNN's estimated at \$1,150/month
- ◇ Suite 206 offers 9 private offices with 3 private restrooms. Many of the offices can be converted to exam rooms.
- ◇ The Suite offers direct access to the first floor of University of Missouri Women's Hospital.
- ◇ Common area restrooms available.
- ◇ Elevator and stairwell access available.
- ◇ Virtual tour available at [www.mahercre.com](http://www.mahercre.com)

FOR MORE INFORMATION PLEASE CONTACT

**Jack L. Maher, III**

**Broker-Officer**

Mobile (573) 489-6860

FAX (815) 550-1506

Email: [maher3@jlmproperties.com](mailto:maher3@jlmproperties.com)

Buttonwood Business Center  
3610 Buttonwood Dr. Suite 200  
Columbia, MO 65201



**MAHER**

COMMERCIAL REAL ESTATE

The information contained herein is for illustration only - dimensions are approximate only.  
This information is not to be reproduced or used for construction or permitting. The information contained within this brochure is believed to be accurate as of the date of input, however, JLM Properties, Inc., assumes no responsibility for the accuracy of the information provided.

[WWW.MAHERCRE.COM](http://WWW.MAHERCRE.COM)



# FLOOR PLAN - SUITES 204, 205 & 206



FOR MORE INFORMATION PLEASE CONTACT

**Jack L. Maher, III**

**Broker-Officer**

Mobile (573) 489-6860

FAX (815) 550-1506

Email: [maher3@jlmproperties.com](mailto:maher3@jlmproperties.com)

Buttonwood Business Center  
3610 Buttonwood Dr. Suite 200  
Columbia, MO 65201



**MAHER**

COMMERCIAL REAL ESTATE

The information contained herein is for illustration only - dimensions are approximate only.  
This information is not to be reproduced or used for construction or permitting. The information contained within this brochure is believed to be accurate as of the date of input, however, JLM Properties, Inc., assumes no responsibility for the accuracy of the information provided.

[WWW.MAHERCRE.COM](http://WWW.MAHERCRE.COM)

# INVESTMENT OVERVIEW - SUITE 207



## SUITE 207 INVESTMENT HIGHLIGHTS:

- ◇ For Sale: \$846,225 or For Lease: \$25 S.F. NNN
- ◇ 3,761 S.F. Class A medical office available for sale or lease in the Keene St. medical district.
- ◇ Lease on a NNN basis, estimated at \$5.60 S.F.
- ◇ Space features a reception, waiting room, several private offices and treatment rooms.
- ◇ No structural walls within the condo allowing for flexible reconfiguration of the floorplan.
- ◇ The suite is located on the second floor of the Keene Medical Building, stairwell and elevator access available.
- ◇ The Keene Medical Building is situated on the hard corner of Keene St. & Berrywood Dr., in the heart of the premiere medical district in Columbia, MO.
- ◇ Common area restrooms available.
- ◇ Virtual tour available at [www.mahercre.com](http://www.mahercre.com)

FOR MORE INFORMATION PLEASE CONTACT

**Jack L. Maher, III**

**Broker-Officer**

Mobile (573) 489-6860

FAX (815) 550-1506

Email: [maher3@jlmproperties.com](mailto:maher3@jlmproperties.com)

Buttonwood Business Center  
3610 Buttonwood Dr. Suite 200  
Columbia, MO 65201



**MAHER**

COMMERCIAL REAL ESTATE

The information contained herein is for illustration only - dimensions are approximate only.  
This information is not to be reproduced or used for construction or permitting. The information contained within this brochure is believed to be accurate as of the date of input, however, JLM Properties, Inc., assumes no responsibility for the accuracy of the information provided.

[WWW.MAHERCRE.COM](http://WWW.MAHERCRE.COM)

# INVESTMENT OVERVIEW - SUITE 207



FOR MORE INFORMATION PLEASE CONTACT

**Jack L. Maher, III**

**Broker-Officer**

Mobile (573) 489-6860

FAX (815) 550-1506

Email: maher3@jlmproperties.com

**Buttonwood Business Center**  
**3610 Buttonwood Dr. Suite 200**  
**Columbia, MO 65201**



**MAHER**

COMMERCIAL REAL ESTATE

The information contained herein is for illustration only - dimensions are approximate only. This information is not to be reproduced or used for construction or permitting. The information contained within this brochure is believed to be accurate as of the date of input, however, JLM Properties, Inc., assumes no responsibility for the accuracy of the information provided.

WWW.MAHERCRE.COM

# INTERIOR PICTURES - SUITE 207



FOR MORE INFORMATION PLEASE CONTACT

**Jack L. Maher, III**

**Broker-Officer**

Mobile (573) 489-6860

FAX (815) 550-1506

Email: [maher3@jlmproperties.com](mailto:maher3@jlmproperties.com)

Buttonwood Business Center  
3610 Buttonwood Dr. Suite 200  
Columbia, MO 65201



**MAHER**

COMMERCIAL REAL ESTATE

The information contained herein is for illustration only - dimensions are approximate only.  
This information is not to be reproduced or used for construction or permitting. The information contained within this brochure is believed to be accurate as of the date of input, however, JLM Properties, Inc., assumes no responsibility for the accuracy of the information provided.

[WWW.MAHERCRE.COM](http://WWW.MAHERCRE.COM)

# AERIAL PHOTOS 500 KEENE STREET



FOR MORE INFORMATION PLEASE CONTACT

**Jack L. Maher, III**

**Broker-Officer**

Mobile (573) 489-6860

FAX (815) 550-1506

Email: [maher3@jlmproperties.com](mailto:maher3@jlmproperties.com)

Buttonwood Business Center  
3610 Buttonwood Dr. Suite 200  
Columbia, MO 65201



**MAHER**

COMMERCIAL REAL ESTATE

The information contained herein is for illustration only - dimensions are approximate only.  
This information is not to be reproduced or used for construction or permitting. The information contained within this brochure is believed to be accurate as of the date of input, however, JLM Properties, Inc., assumes no responsibility for the accuracy of the information provided.

[WWW.MAHERCRE.COM](http://WWW.MAHERCRE.COM)

# AERIAL PHOTOS 500 KEENE STREET



FOR MORE INFORMATION PLEASE CONTACT

**Jack L. Maher, III**

**Broker-Officer**

Mobile (573) 489-6860

FAX (815) 550-1506

Email: [maher3@jlmproperties.com](mailto:maher3@jlmproperties.com)

Buttonwood Business Center  
3610 Buttonwood Dr. Suite 200  
Columbia, MO 65201



**MAHER**

COMMERCIAL REAL ESTATE

The information contained herein is for illustration only - dimensions are approximate only.  
This information is not to be reproduced or used for construction or permitting. The information contained within this brochure is believed to be accurate as of the date of input, however, JLM Properties, Inc., assumes no responsibility for the accuracy of the information provided.

[WWW.MAHERCRE.COM](http://WWW.MAHERCRE.COM)