



FOR SALE

OFFICE CONDOMINIUMS

333 WESTMINSTER STREET, PROVIDENCE, RI

THIRD FLOOR ±3,294 SF

FOURTH FLOOR ±3,379 SF

FIFTH FLOOR ±3,327 SF

IN THE HEART OF DOWNTOWN PROVIDENCE



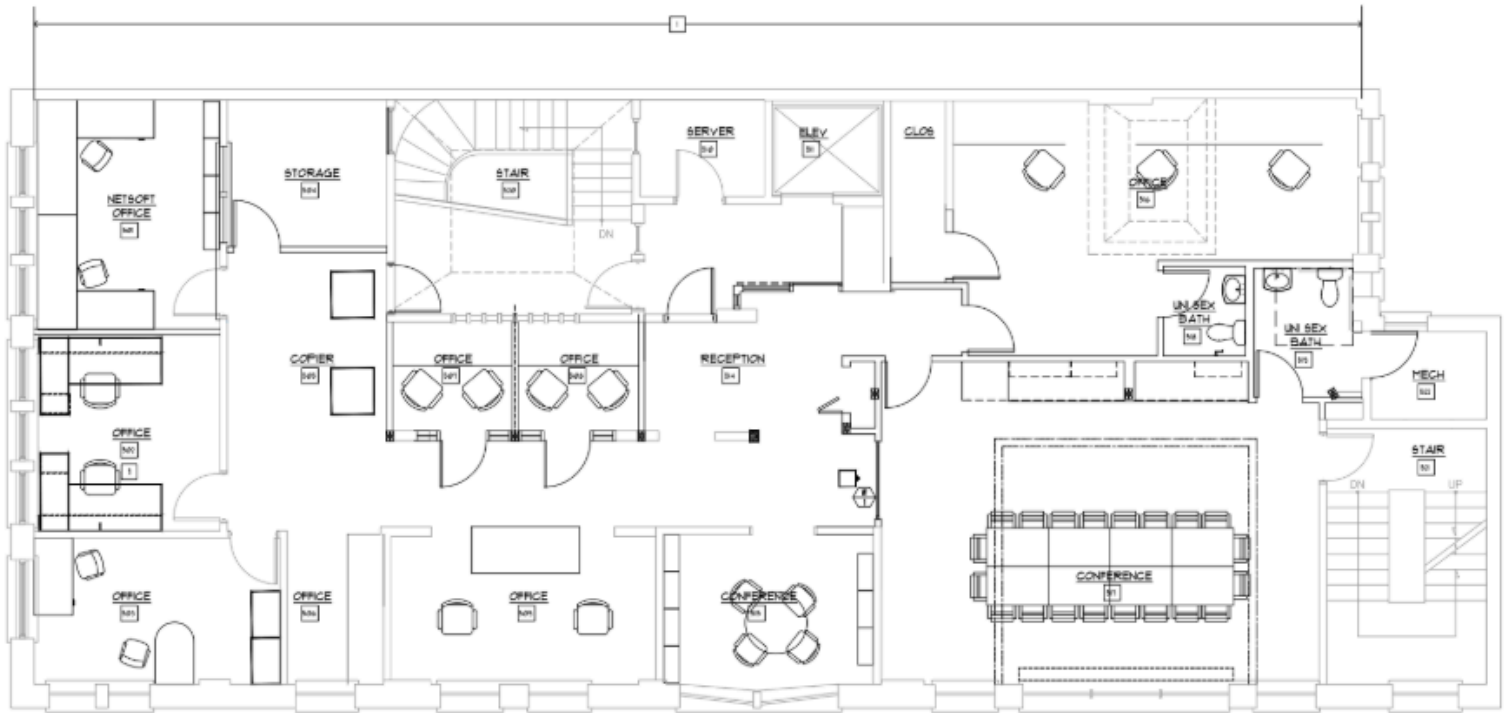
PROPERTY DESCRIPTION

The Moulton Hall Condominiums at 333 Westminster Street offer a unique opportunity within a five-story, 16,588 SF loft-style office building originally constructed in 1900. Featuring full floor plates ranging from 3,294 SF to 3,379 SF, high ceilings, and creative loft-style character, the property appeals to tenants seeking an authentic and flexible workspace in a vibrant urban setting.

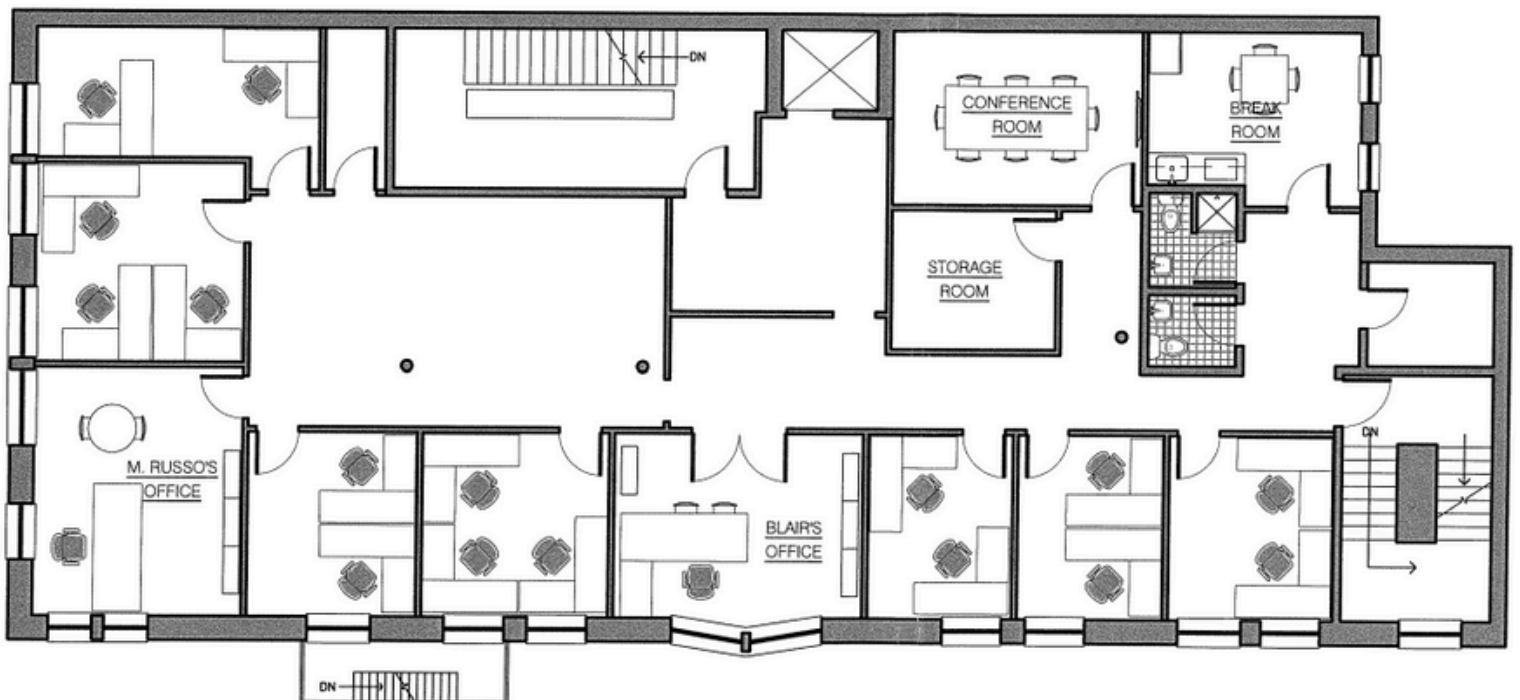
HIGHLIGHTS

- 3,294 SF - 10,000 SF Available
- Zoned D-1-120, which allows office or residential use
- Minutes to I-95, Amtrak/MBTA, and local bus routes; highly walkable urban core.
- Sought-after Westminster Street corridor surrounded by retail, dining, and new development.
- Fully sprinklered
- 800 AMPS, 277/480 volts, 3 phase
- Elevator: 2,500 lb capacity
- Condominium Fees: \$2.35 per SF
- Real Estate Taxes: \$2.52 per SF
- For Sale: \$120.00 per SF per Floor

FLOOR PLANS



5th Floor



3rd Floor