

FOR SALE

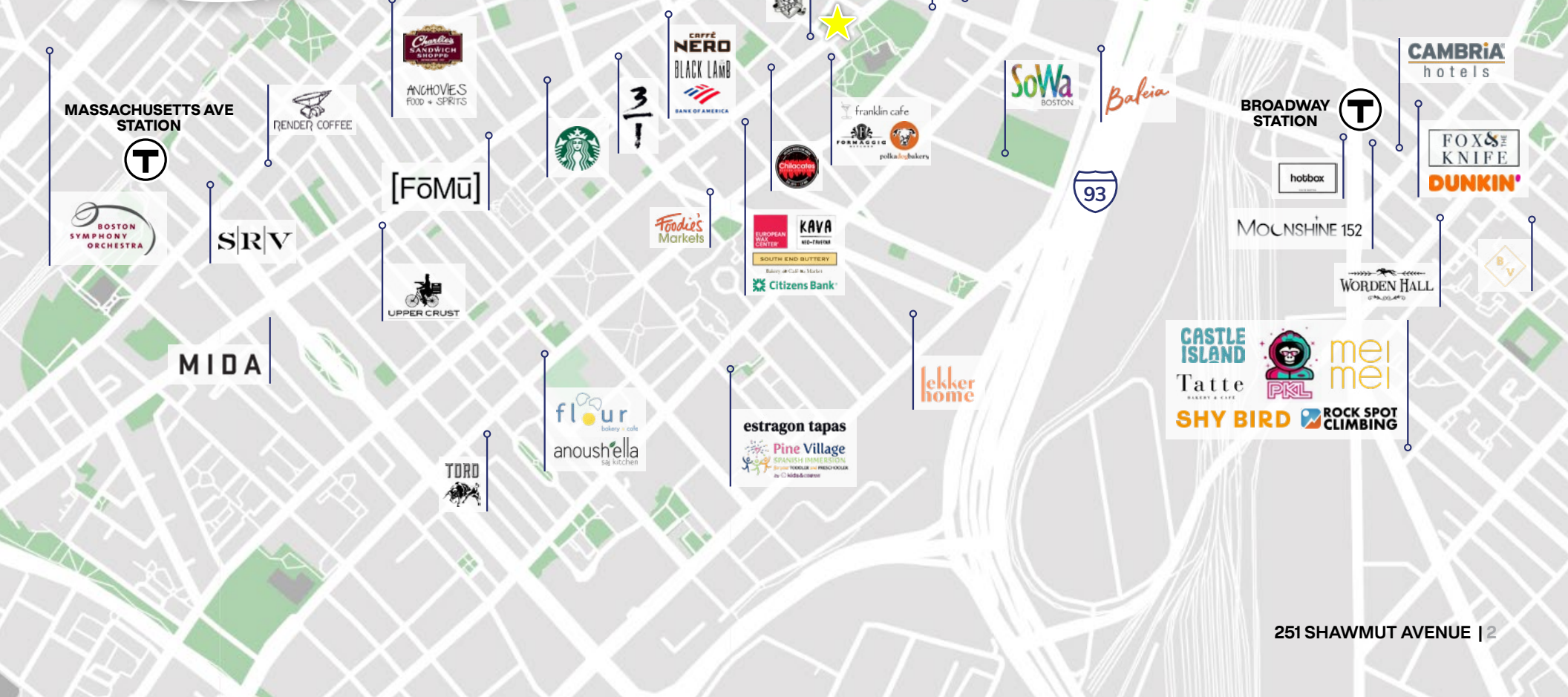
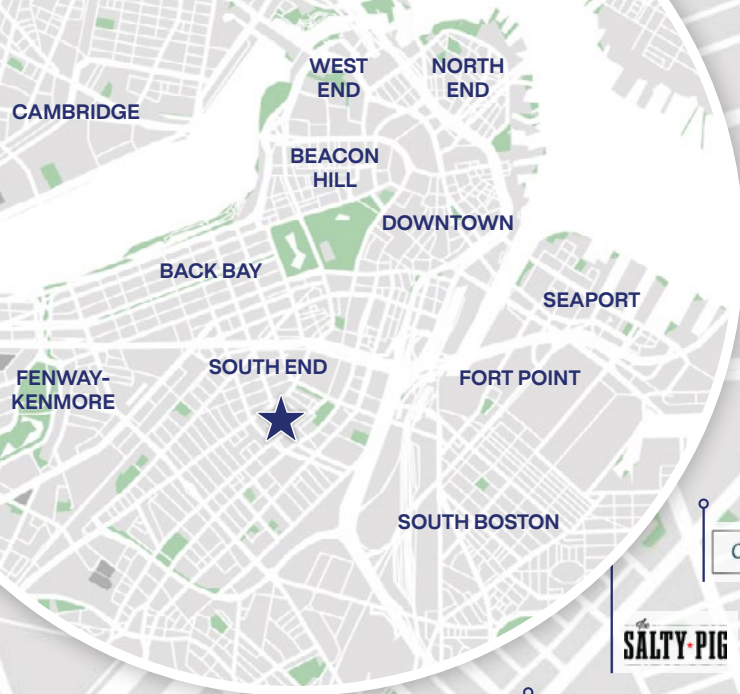
251 SHAWMUT AVE.
BOSTON, MA

1,415 SF OPPORTUNITY

DISTRICT
REAL ESTATE ADVISORS



LOCATION



AREA SPECS

(0.5 MILE RADIUS)

\$560+ MILLION

RETAIL EXPENDITURE

\$198,000

AVERAGE HOUSEHOLD INCOME

19,000

RESIDENTS

38

AVERAGE AGE

NEIGHBORS



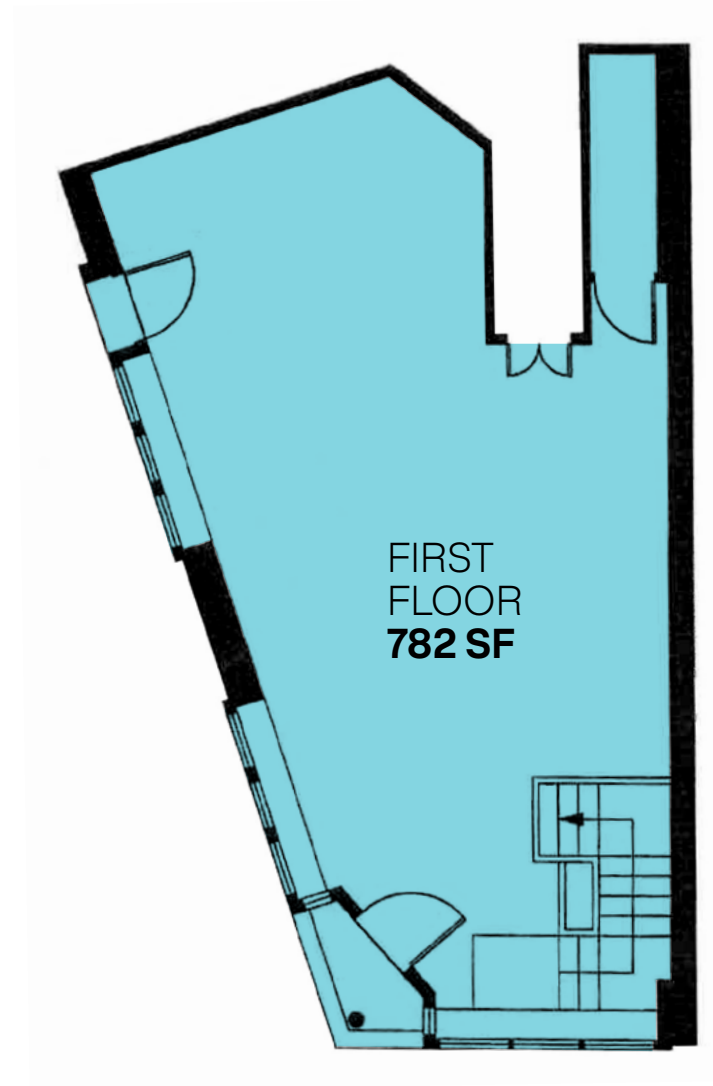
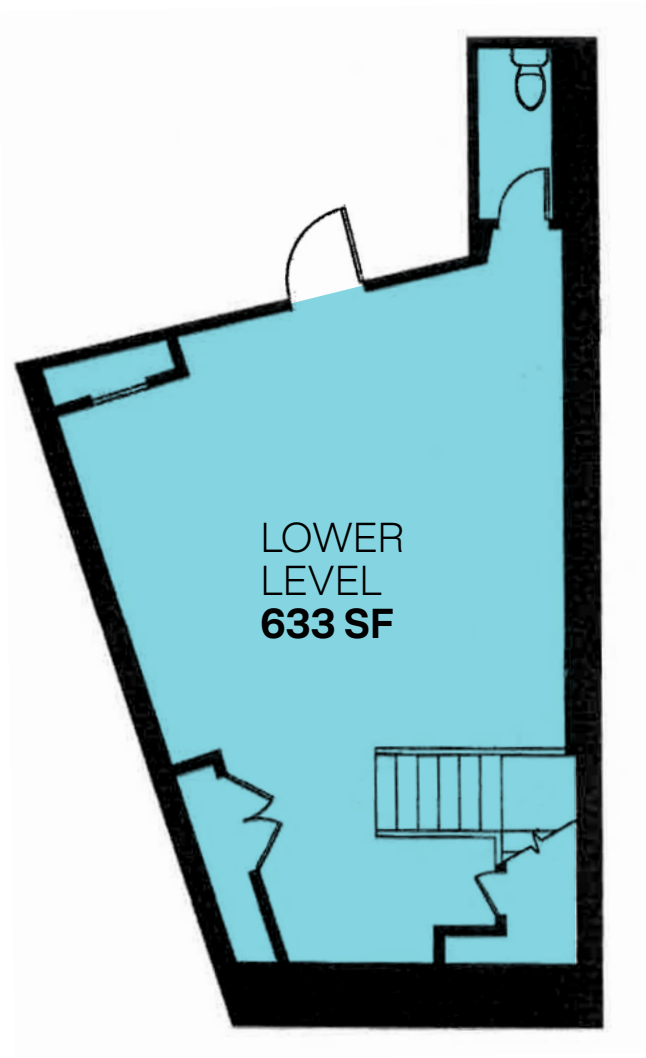
barcelona

SOUTH END BUTTERY

Bakery • Café • Market



FLOOR PLAN



1,415 SF



NEIGHBORHOOD





FIND YOUR DISTRICT



CHRISTOPHER MEARN
Principal

617.595.1544
chris@districtadvisors.com



TIMOTHY BULMAN
Principal

617.448.5616
tim@districtadvisors.com



800 Boylston Street
Suite 420, Boston MA 02199

857.284.7971
districtadvisors.com

This information has been secured from sources we believe to be reliable, but we make no representations or warranties, expressed or implied, as to the accuracy of the information. References to rents, expenses, expense reimbursements, lease terms, square footage, demographics, traffic count or age are approximate. Parties must verify the information and bears all risk for any inaccuracies.