



# 55 CHRYSTIE

Between Canal Street & Hester Street

---

The Crossroads of  
Chinatown, Soho  
& Lower East Side

**COMMERCIAL SPACES  
FOR LEASE**

# 55 CHRYSTIE



# 55 CHRYSTIE

---

## INTERESTING FACT

**Beastie Boys** called 55-59 Chrystie their home, recording studio and party palace in their early career.

## KEY COMMENTS

- Move-in ready
- Exposed brick wall throughout, wood floors, exposed ceilings
- Outdoor terrace, potential rooftop access
- Great natural light throughout
- Elevator building

CONTACT: [teresa@ngpadvisors.com](mailto:teresa@ngpadvisors.com)  
917-250-2010



# 55 CHRYSTIE

## PREMISES

**RETAIL** – GROUND, CELLAR

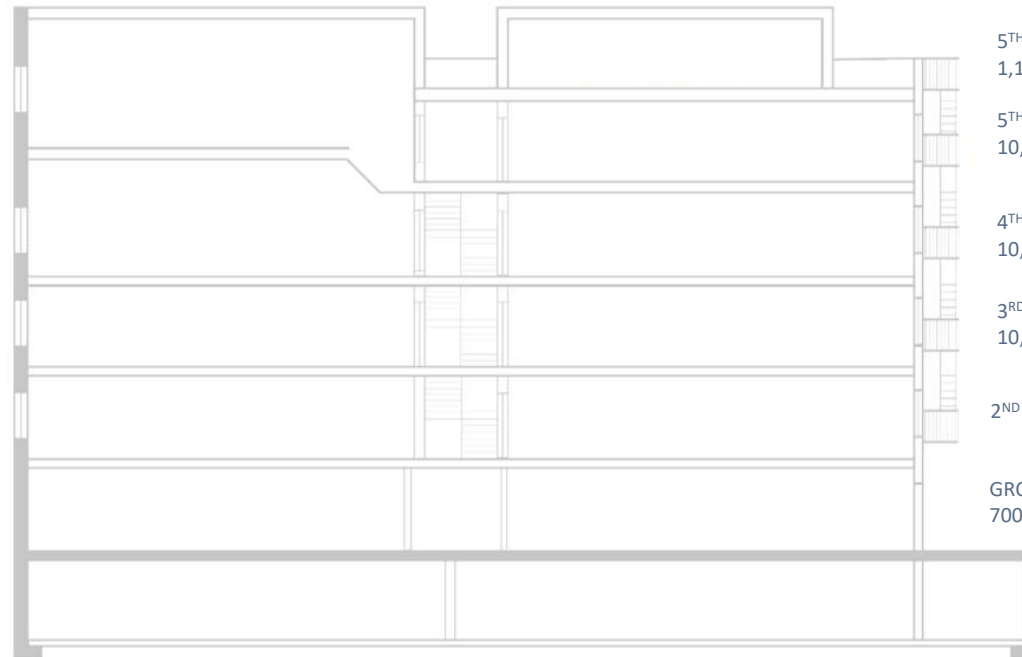
**OFFICE** – FLOORS 3-5

OUTDOOR SPACE INCLUDED WITH THE 5<sup>TH</sup> FLOOR

**Availability** – Immediate

**Term** – Negotiable

**Asking Rent** – Upon Request



5<sup>TH</sup> FLOOR PENTHOUSE / ROOF DECK  
1,100 RSF / 1,290 SF

5<sup>TH</sup> FLOOR / OUTDOOR TERRACE  
10,000 RSF / 850 SF

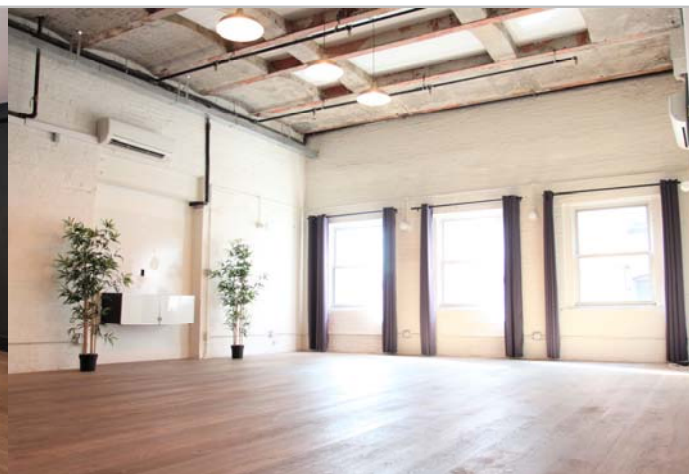
4<sup>TH</sup> FLOOR  
10,000 RSF

3<sup>RD</sup> FLOOR  
10,000 RSF

2<sup>ND</sup> FLOOR

GROUND FLOOR  
700 SF REMAINING

CELLAR (street  
access, elevator)  
8,050 RSF



## LOWER EAST SIDE

- **Diverse, Welcoming Community** – The unpretentious, no-frills attitude of LES draws people from all walks of life, contributing to the neighborhood’s unique and eclectic identity. LES provides a combination of authenticity and creative energy which attracts NYC’s trendsetting young residents, visitors and TAMI firms.
- **Sara Roosevelt Park**, 7.8-acre park directly across the street, offering basketball courts, a soccer field, community gardens, playgrounds and roller skating rink
- **Vibrant Neighborhood Amenities** – Trendy restaurants and bars, nightlife, art galleries, culture, live music, shopping, immigrant history
- **Essex Crossing** spans 20 acres and features 1,000 residences, 300,000 SF of diverse retail (Trader Joes, Target, Regal Cinema, Essex Market, Market Line), and 350,000 SF of office, and 100,000 SF of green space

## BOUTIQUE HOTELS

- Nine Orchard Hotel, 50 Bowery, 11 Howard, NOMO Soho, Ian Schrager’s PUBLIC Hotel, Hotel Indigo, SIXTY LES, CitizenM, Moxy, Sister City by Ace Hotels, Crosby Street Hotel all within immediate walking distance

## CONVENIENT ACCESS

- Located at the foot of the Manhattan Bridge leading to Downtown Brooklyn
- Subway lines include Grand Street B/D and Canal Street’s 6/N/Q/R/W/J/Z
- Bike path along Chrystie Street, a two-way street turning into Second Avenue

