

# For Lease - 6515 SW 57th St, OKC, OK 73179



- FAA & Will Rogers World Airport located across the street
- Fenced & Graveled yard
- Pre-cast concrete construction
- Heavy Power



**VICTORY**  
COMMERCIAL REAL ESTATE

**Caleb Cox**

405.923.6240

[caleb@victorycre.com](mailto:caleb@victorycre.com)





## Details

---

<b>Lease Rate</b>	\$4,708.34/Month	<b>Submarket</b>	Southwest
<b>2024 NNNs</b>	\$775/Month	<b>Clear Height</b>	18'
<b>Total SF</b>	5,000	<b>Grade Level Doors</b>	(1) 12'H X 10'W
<b>County</b>	Oklahoma		(1) 14'H X 10'W

---

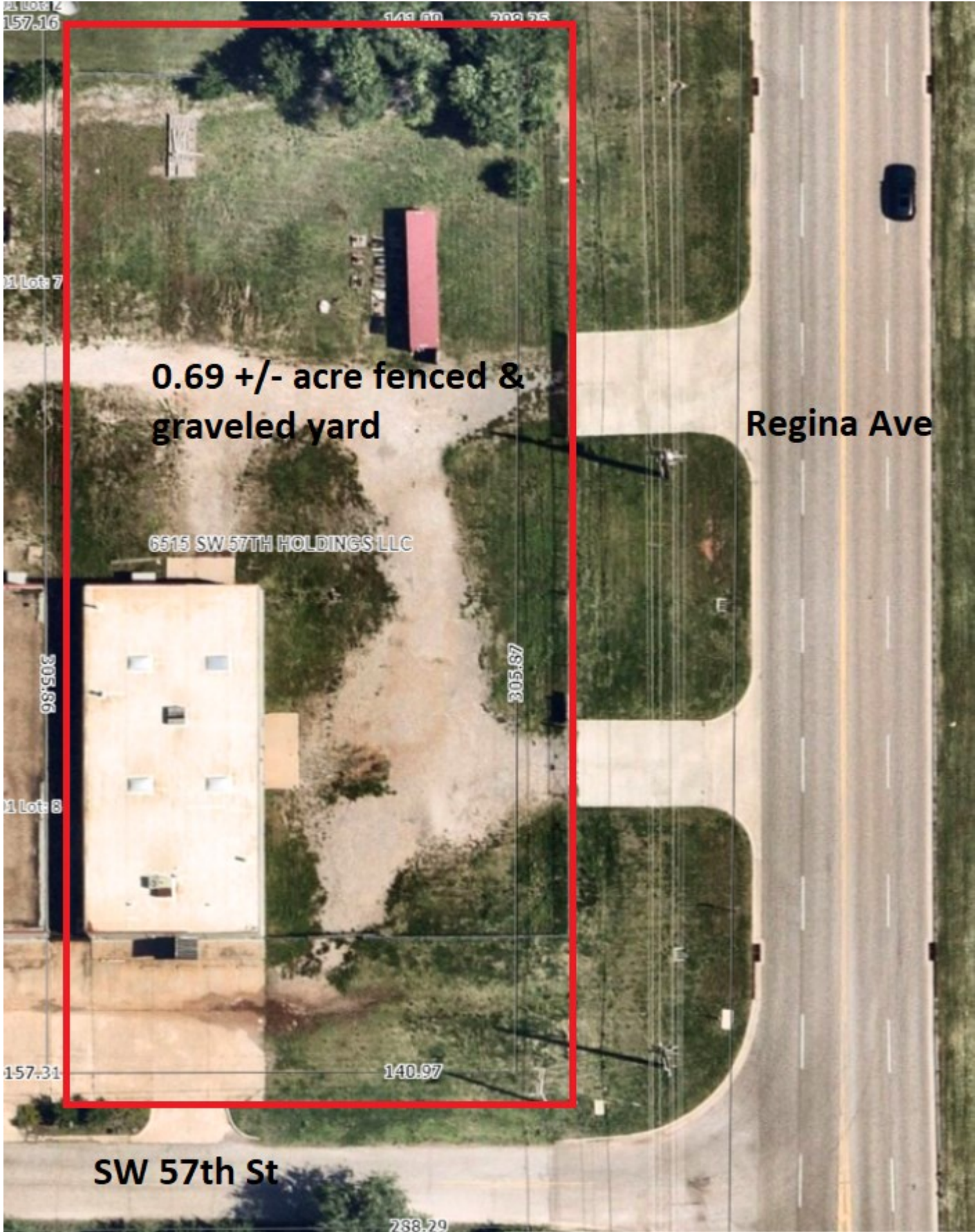
### Office/Warehouse Breakdown & Details

Warehouse: 4,000 sf & Office 1,000 sf. 3 private offices, coffee bar, large entry/reception area. One office bathroom and one shop bathroom. 3 Phase power.

### Other Details:

Located in Oklahoma City's most active industrial market and a stones throw from Will Rogers World Airport. Approximately 1.3 miles south of I-240 & 3.33 miles west of I-44.





The information listed above has been obtained from sources we believe to be reliable, however, we accept no responsibility for its correctness.





The information listed above has been obtained from sources we believe to be reliable, however, we accept no responsibility for its correctness.



# HOBBY LOBBY



Will Rogers World Airport

TREADWELL

FREQUENT FLYERS

AIRLIN

The information listed above has been obtained from sources we believe to be reliable, however, we accept no responsibility for its correctness.