

# LAND FOR SALE

213 & 217 RICHARD IVEY HIGHWAY

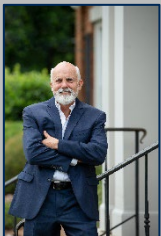
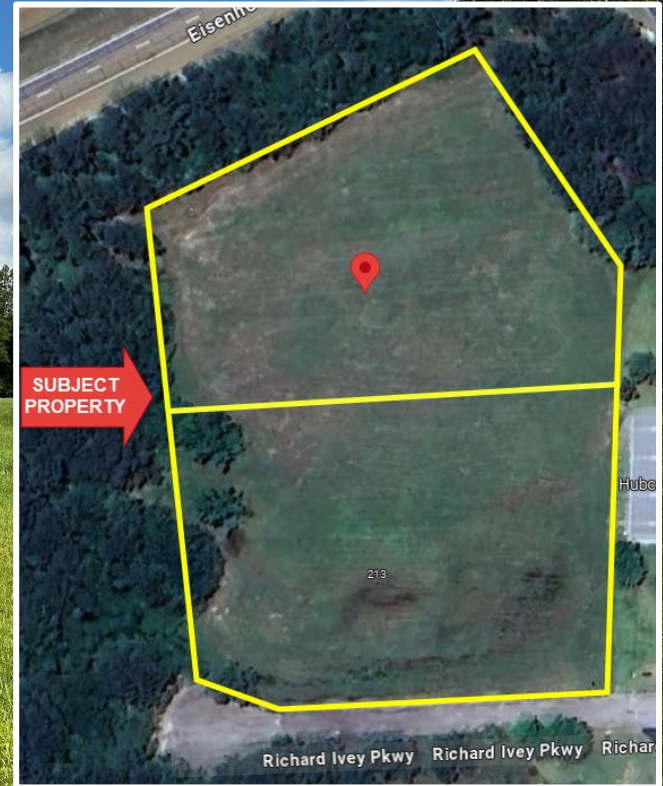
MACON GA, 31206

BIBB COUNTY

TWO PARCELS TOTALING 3.2 ACRES

ASKING PRICE:

\$155,200



STERLING BAILEY C: 478.951.9443 | ADAM STEAD C: 706.622.2232  
[SBAILEY@THSUMMITGROUPMACON.COM](mailto:SBAILEY@THSUMMITGROUPMACON.COM) | [ASTEAD@THSUMMITGROUPMACON.COM](mailto:ASTEAD@THSUMMITGROUPMACON.COM)

4124 ARKWRIGHT ROAD, SUITE 1, MACON, GA 31210

O: 478.750.7507

[WWW.THESUMMITGROUPMACON.COM](http://WWW.THESUMMITGROUPMACON.COM)



## PROPERTY INFORMATION

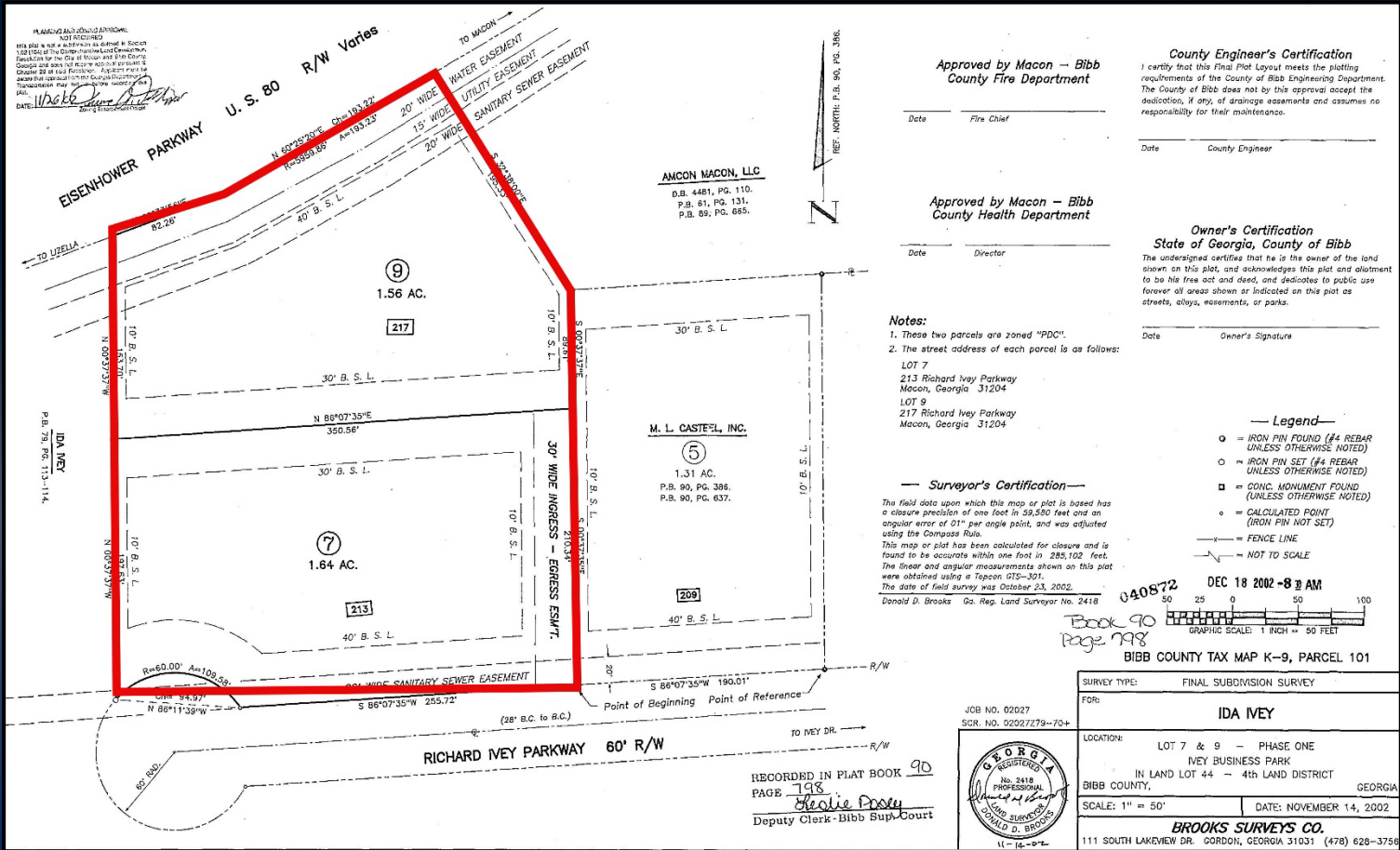
- Two Lots Totaling 3.2 Acres
- 213 Richard Ivey Pkwy - 1.64 Acres
- 217 Richard Ivey Pkwy - 1.56 Acres
- Zoned: PDC (Planned Development Commercial)
- All utilities available to site
- Traffic Counts (GDOT 2022 Published Data estimate):  
Eisenhower Parkway: 13,700 VPD  
Columbus Road: 5,840 VPD



**213 & 217 RICHARD IVEY HIGHWAY**  
**MACON GEORGIA, 31201**  
**BIBB COUNTY**



*The information contained herein has been compiled from various sources, both private and public. It is accurate and complete only to the extent to which The Summit Group has been able to ascertain from third party sources. As such, no warranty or guarantee is given or implied with regard to the accuracy or completeness of any information contained herein. Any interested party shall be required to conduct its own due diligence and investigations to verify, review, audit, or otherwise insure the information contained herein.*



**213 & 217 RICHARD IVEY HIGHWAY  
MACON GEORGIA, 31201  
BIBB COUNTY**



The information contained herein has been compiled from various sources, both private and public. It is accurate and complete only to the extent to which The Summit Group has been able to ascertain from third party sources. As such, no warranty or guarantee is given or implied with regard to the accuracy or completeness of any information contained herein. Any interested party shall be required to conduct its own due diligence and investigations to verify, review, audit, or otherwise insure the information contained herein.