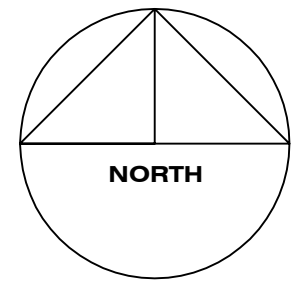


BASEMENT FLOOR PLAN - ELECTRICAL / LIGHTING PLAN

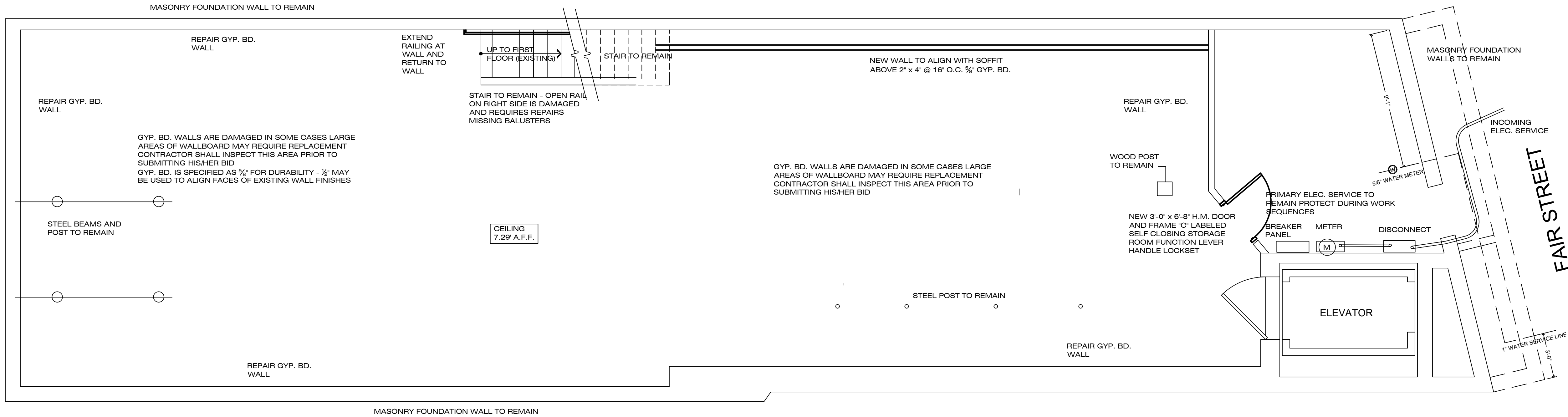
1/4" = 1' - 0"

**EXISTING LIGHTING TO REMAIN
- RE-LAMP AS REQUIRED**

GENERAL ELECTRICAL NOTES:
LANDLORD'S ELECTRICAL CONTRACTOR SHALL UPGRADE EXISTING FUSE BOXES TO ELECTRICAL BREAKER PANELS
INSTALL ALL BRANCH WIRING TO LIGHTING, PROVIDE ILLUMINATED EXIT SIGNS, EMERGENCY LIGHTING WITH BACK-UP BATTERY, NITE LIGHTS, WALL OUTLETS AND ELECTRICAL SERVICE TO (3) MINI SPLIT HEAT PUMPS WITH REMOVE DISCONNECTS
TENANT TO SUPPLY ALL TRACK LIGHTING INCLUDING TRACKS AND FIXTURES
TENANT TO SUPPLY ALL RECESSED 'ACCENT' LIGHTING



WALL STREET



BASEMENT FLOOR PLAN

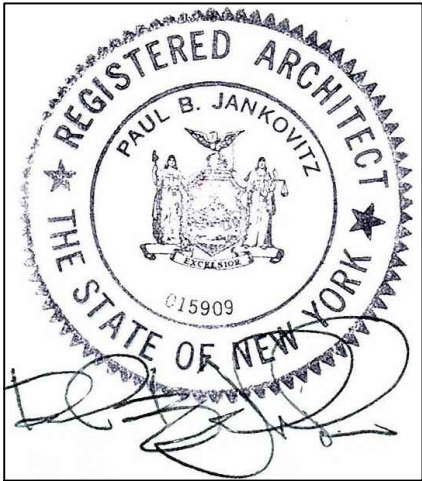
1/4" = 1' - 0"

PBJ

PAUL B. JANKOVITZ, R.A.
ARCHITECT/PLANNER
CT. NJ, NY,
62 YALE COURT
KINGSTON, NEW YORK 12401
845-532-3464
PBJAIA@AOL.COM

IT IS A VIOLATION OF THE LAW FOR ANY PERSON
UNLESS ACTING UNDER THE DIRECTION OF A
LICENSED ARCHITECT, TO ALTER THE DOCUMENT
IN ANY WAY IF THE DOCUMENT BEARING THE
SEAL OF AN ARCHITECT IS ALTERED. THE ALTERING
ARCHITECT SHALL AFFIX HIS/HER SEAL AND THE
NOTATION "ALtered BY" FOLLOWED BY HIS/HER
SIGNATURE AND THE DATE OF SUCH ALTERATION
AND A SPECIFIC DESCRIPTION OF THE ALTERATION

MAGIC HILLS
328 WALL ST.
KINGSTON, NY 12401
INTERIOR FIT-UP PLAN



REVISIONS

NO.	DATE	DESCRIPTION
1.	6.10.22	COMMUNICATION CABLE LOCATIONS
2.	7.29.22	BREAKER OUTLET LOCATIONS 30 AMP OUTLETS

328 WALL ST.
KINGSTON, NY

DATE:
03.22.22
PROJECT NO.
05192021K
SCALE:
1/4" = 1' - 0"
DRAWING NO.
S-4.0