

20445 PROSPECT ROAD SAN JOSE, CA 95129



HIGHLIGHTS

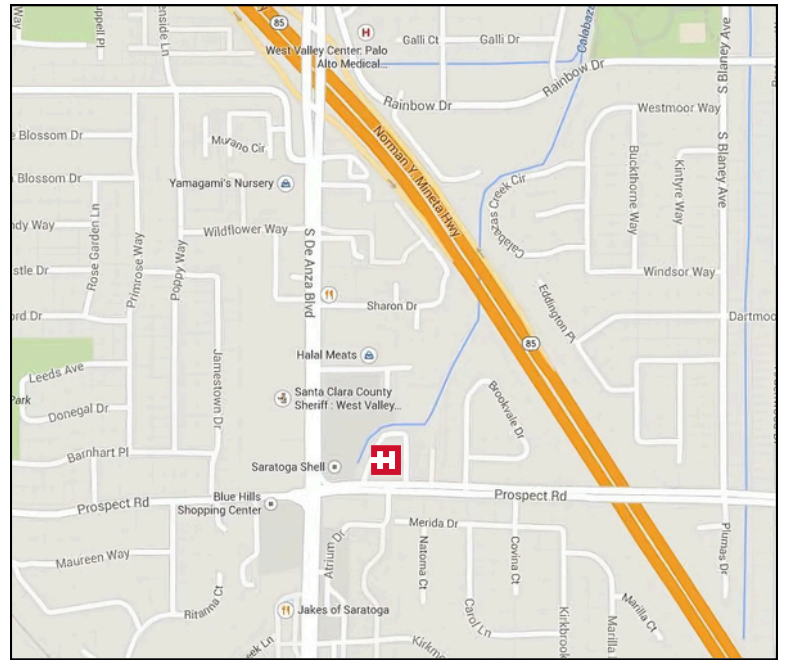
- Medical dental office building in a park-like setting
- Border of Cupertino, Saratoga, and West San Jose
- Easy access to Hwy 85 & S. De Anza Blvd
- Abundant on-site parking

AVAILABLE

- **Suite 1:** ±1,263 RSF

LEASE RATE

- \$3.50/RSF Modified Gross



HealthMedRealty

260 Los Gatos-Saratoga Rd., Los Gatos, CA 95030
Lic. 01902032 | 408.217.6000
www.healthmedrealty.com

No warranty or representation, express or implied is made as to the accuracy of the information contained herein, and the same is submitted subject to errors, omissions, changes of price, rental or other conditions, withdrawal without notice.

For Further Information, Please Contact:

Eric Yeung

☎ **408-457-8806**

✉ ericy@healthmedrealty.com

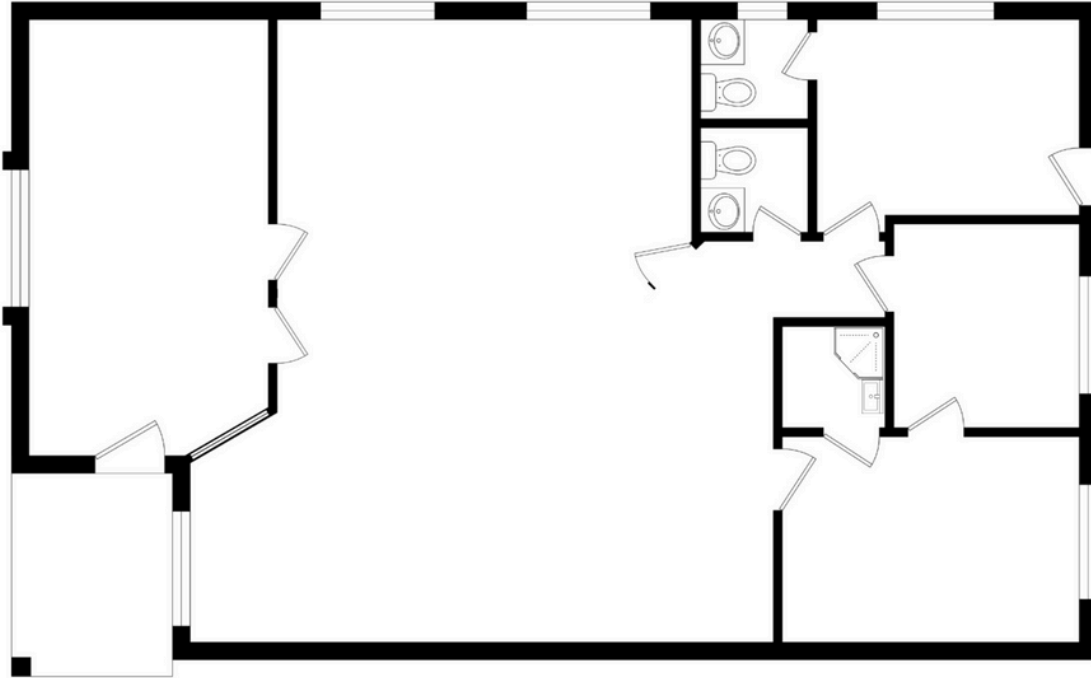
☎ Lic. 01937705



20445 PROSPECT ROAD SAN JOSE, CA 95129

FLOOR PLAN

SUITE 1: ± 1,263 RSF



Not to scale. All dimensions are approximate.



HealthMedRealty

260 Los Gatos-Saratoga Rd., Los Gatos, CA 95030
Lic. 01902032 | 408.217.6000
www.healthmedrealty.com

No warranty or representation, express or implied is made as to the accuracy of the information contained herein, and the same is submitted subject to errors, omissions, changes of price, rental or other conditions, withdrawal without notice.

For Further Information, Please Contact:

Eric Yeung

☎ 408-457-8806

✉ ericy@healthmedrealty.com

📄 Lic. 01937705

