



# CHADCO

BUILDING • COMMERCIAL PROPERTIES



For Lease  
2902 Professional Park Drive, Burlington, NC 27215



## BUILDING INFORMATION:

- Adjacent to Alamance Regional Medical Center
- Easy access from I-85/40 at Huffman Mill Road
- Close to shopping, restaurants and housing
- Single story building with stone accents
- Convenient front door parking
- New construction, ready for upfit
- Side Entrance can be used for Ambulance Access



## LANDLORD PROVIDES:

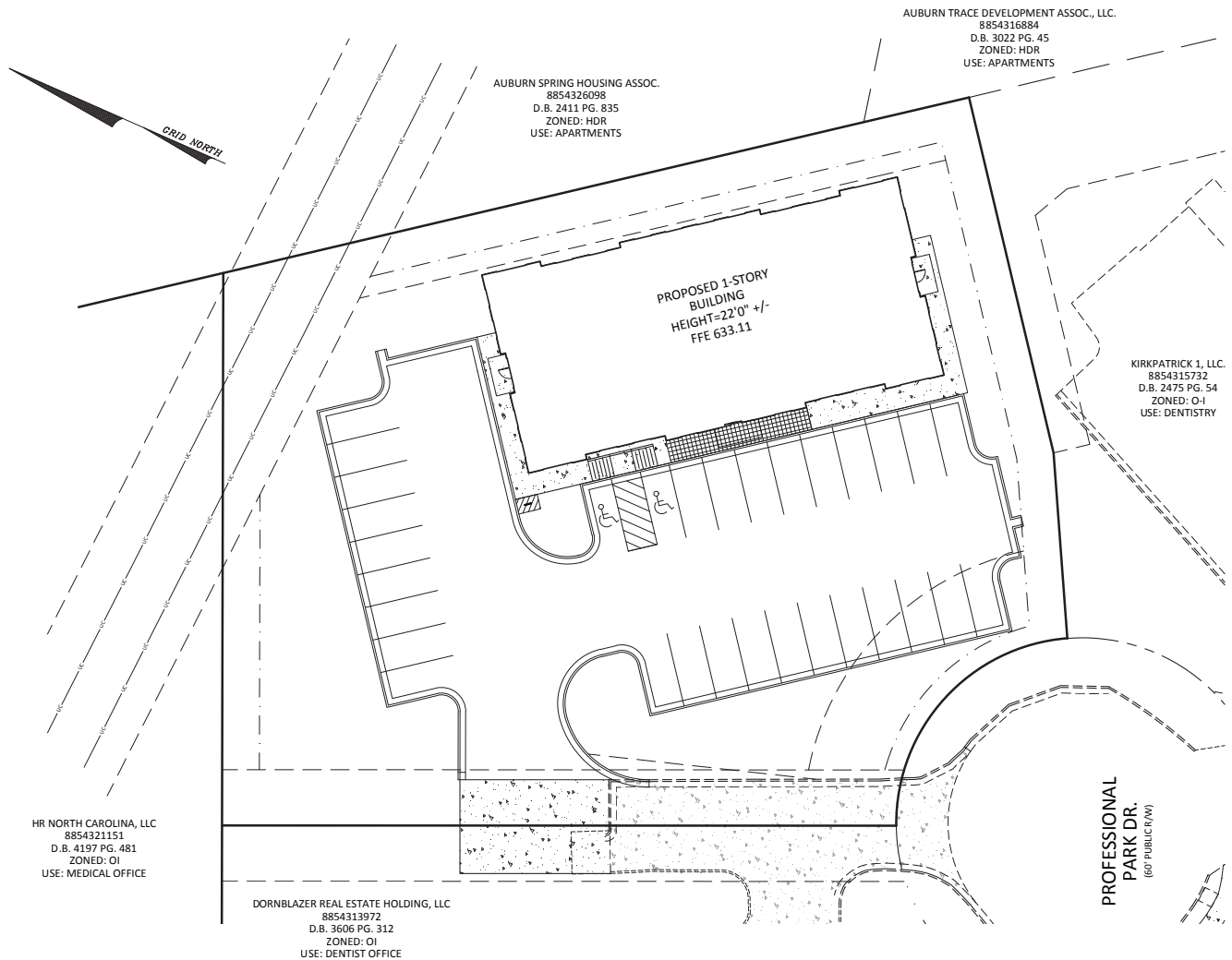
- Warm Shell with (3) Roof Top HVAC Units
- 460V 3-Phase Power
- Water & Sewer Stub-Ups in Building
- Conduit for Communications
- House Panel & Exterior Building Lighting Installed
- 31 Parking Spaces

## LEASE INFORMATION:

Building Size	6,252 sf
Number of Floors	Single story with front door parking
Lease Rate	\$34.75/sf
Lease Term	Negotiable
Taxes, Insurance & Common Area Maintenance	NNN
Tenant Upfit Allowance	Negotiable

View commercial lease space at [www.chadcobuilders.com](http://www.chadcobuilders.com)  
336-516-0428





**CHADCO**  
BUILDING • COMMERCIAL PROPERTIES

2004-B Anthony Road, Burlington, NC 27215 PO Box 877, Graham, NC 27253  
Office 336-516-0428 Fax 336-297-6586 Mobile 336-516-1324 Mobile 336-516-0428  
View commercial lease space at [www.chadcobuilders.com](http://www.chadcobuilders.com)