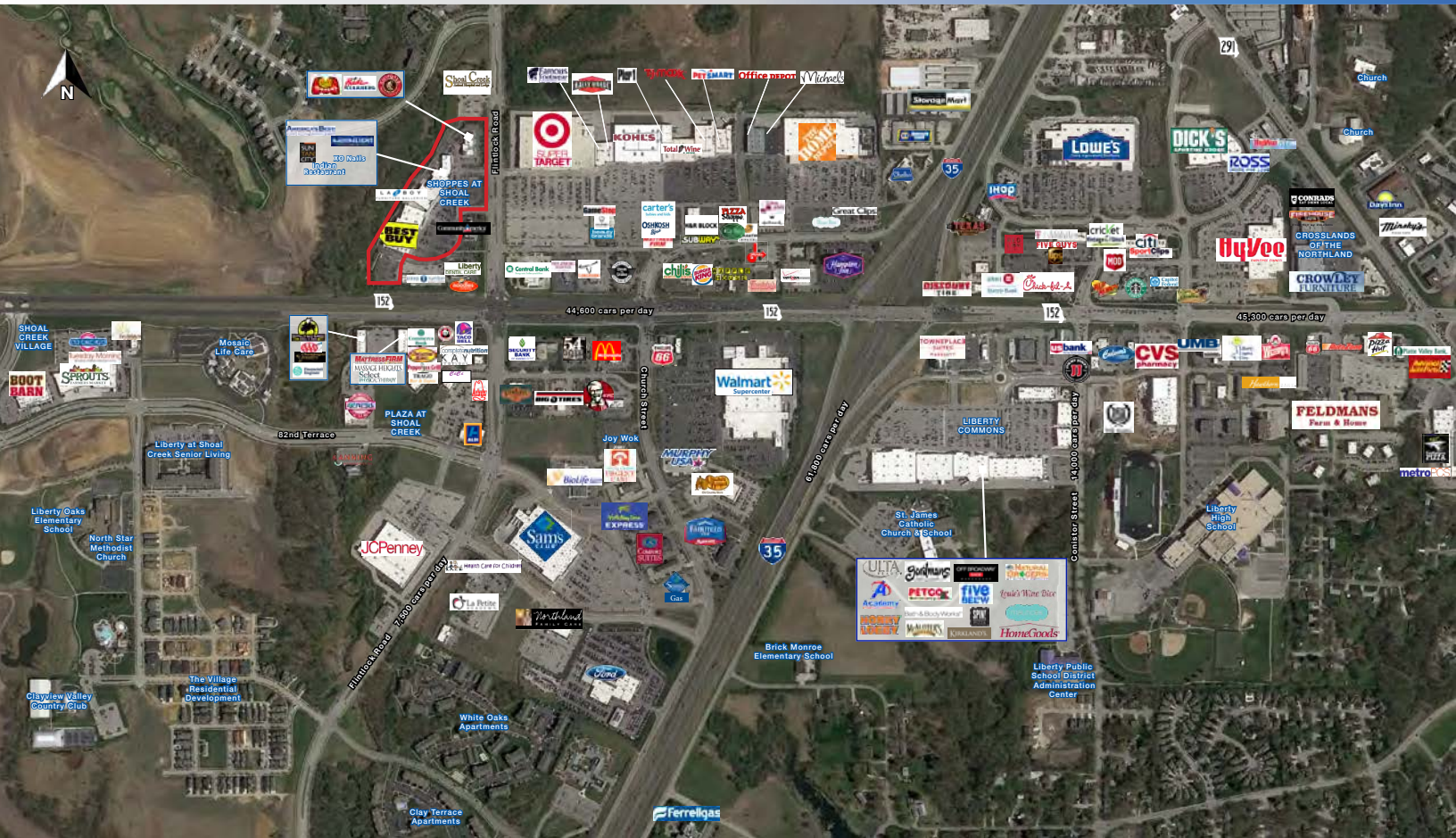




SHOPPES AT SHOAL CREEK

Junior Box & Retail Space Available | New to Market!

152 Highway & Flintlock Rd (NWC), Kansas City (Liberty), MO



JUNIOR BOX & RETAIL SPACE FOR LEASE

DEMOGRAPHICS

	1 mile	3 miles	5 miles
Estimated Population	5,668	52,586	103,649
Avg. Household Income	\$156,106	\$138,554	\$128,876

- Major community center in the heart of growing Liberty, MO (North Kansas City) market
- Great visibility and highway signage
- 18,000 SF Junior Anchor Space; 2,468 SF retail Space
- Ample parking for all retail and service uses
- Arguably the #1 regional market in the metropolitan area
- Join over one million sq ft of traffic generators at this intersection including JC Penney, Kohl's, Home Depot, Walmart Supercenter, Super Target, TJ Maxx, Michaels, Sprouts, Best Buy, and many others
- The City of Liberty is recognized by CNN/Money Magazine as the 7th Best Place to Live in America



CLICK HERE TO VIEW MORE LISTING INFORMATION

For More Information Contact:

DAKOTA GRIZZLE | 816.412.7395 | dgrizzle@blockandco.com

DAVID BLOCK | 816.412.7400 | dblock@blockandco.com

Exclusive Agents

SHOPPES AT SHOAL CREEK

Junior Box & Retail Space Available | New to Market!
152 Highway & Flintlock Rd (NWC), Kansas City (Liberty), MO

DRONE PHOTOS



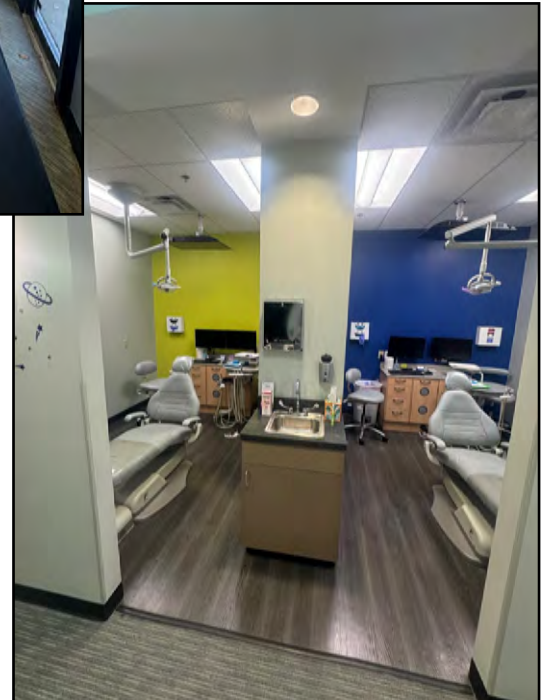
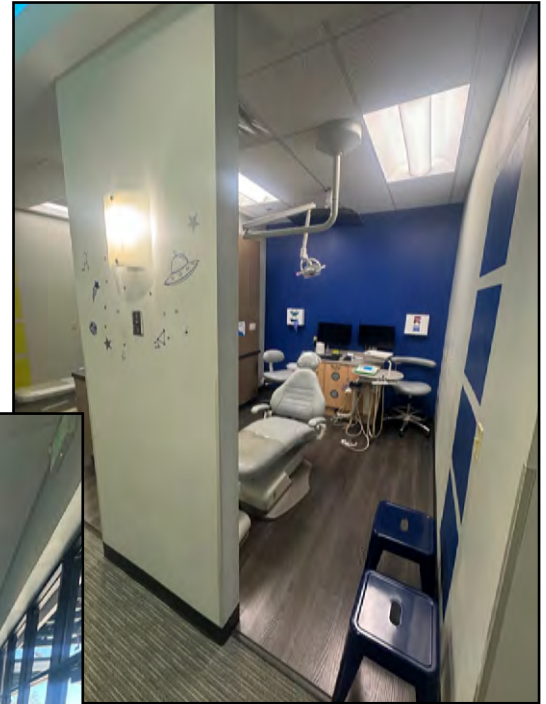


SHOPPES AT SHOAL CREEK

Junior Box & Retail Space Available | New to Market!

152 Highway & Flintlock Rd (NWC), Kansas City (Liberty), MO

2,468 SF SPACE PHOTOS

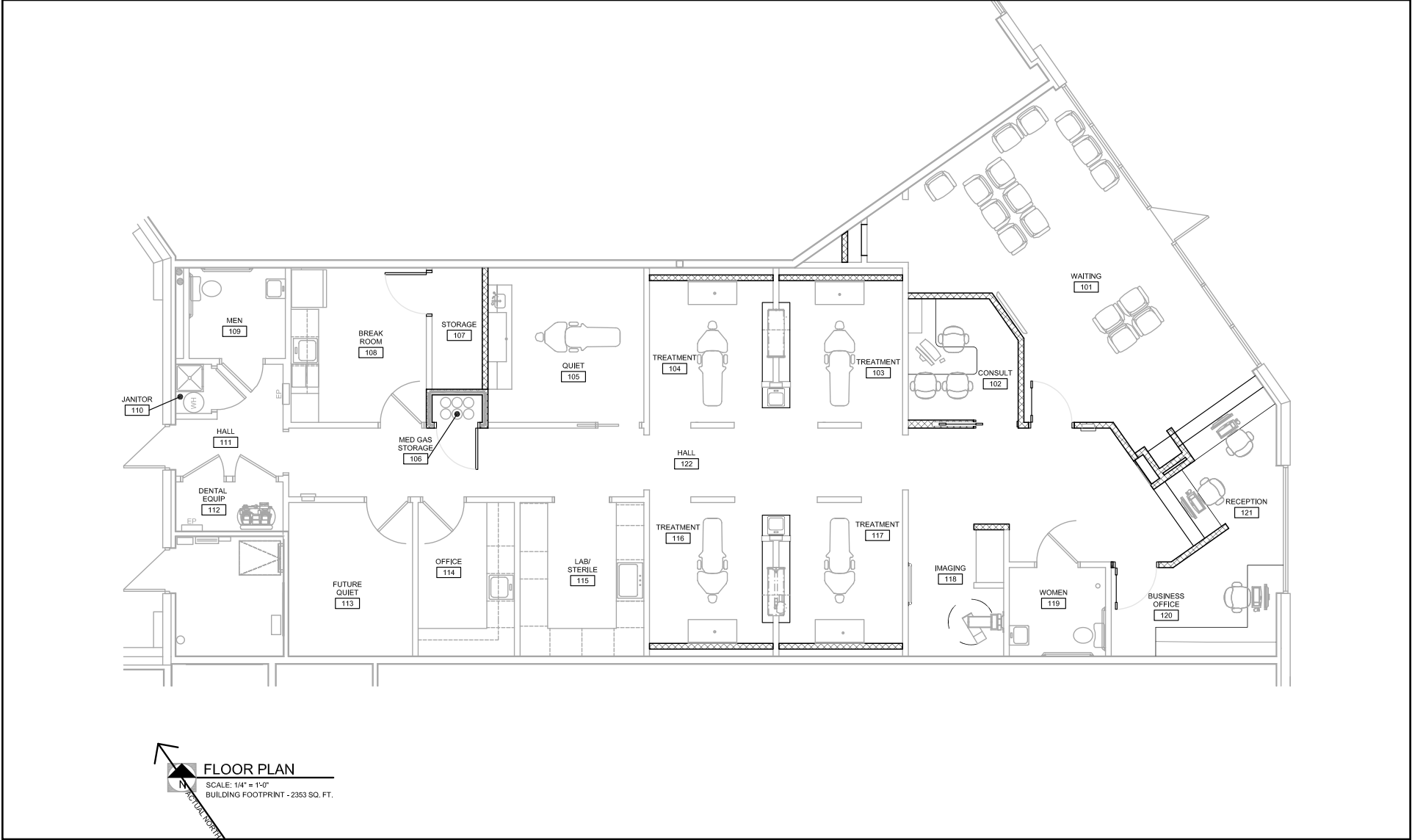




SHOPPES AT SHOAL CREEK

Junior Box & Retail Space Available | New to Market!
152 Highway & Flintlock Rd (NWC), Kansas City (Liberty), MO

2,468 SF SPACE FLOOR PLAN

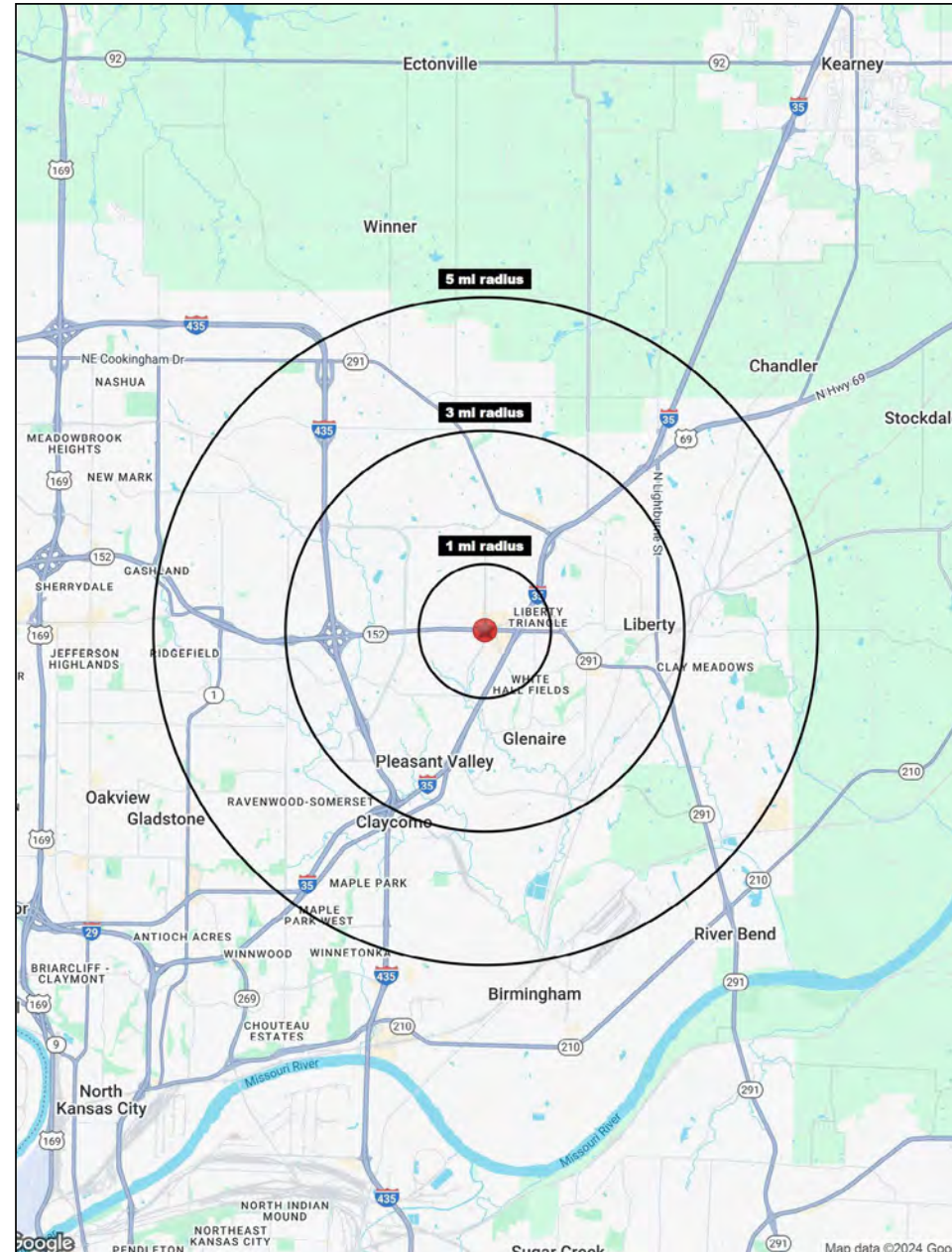
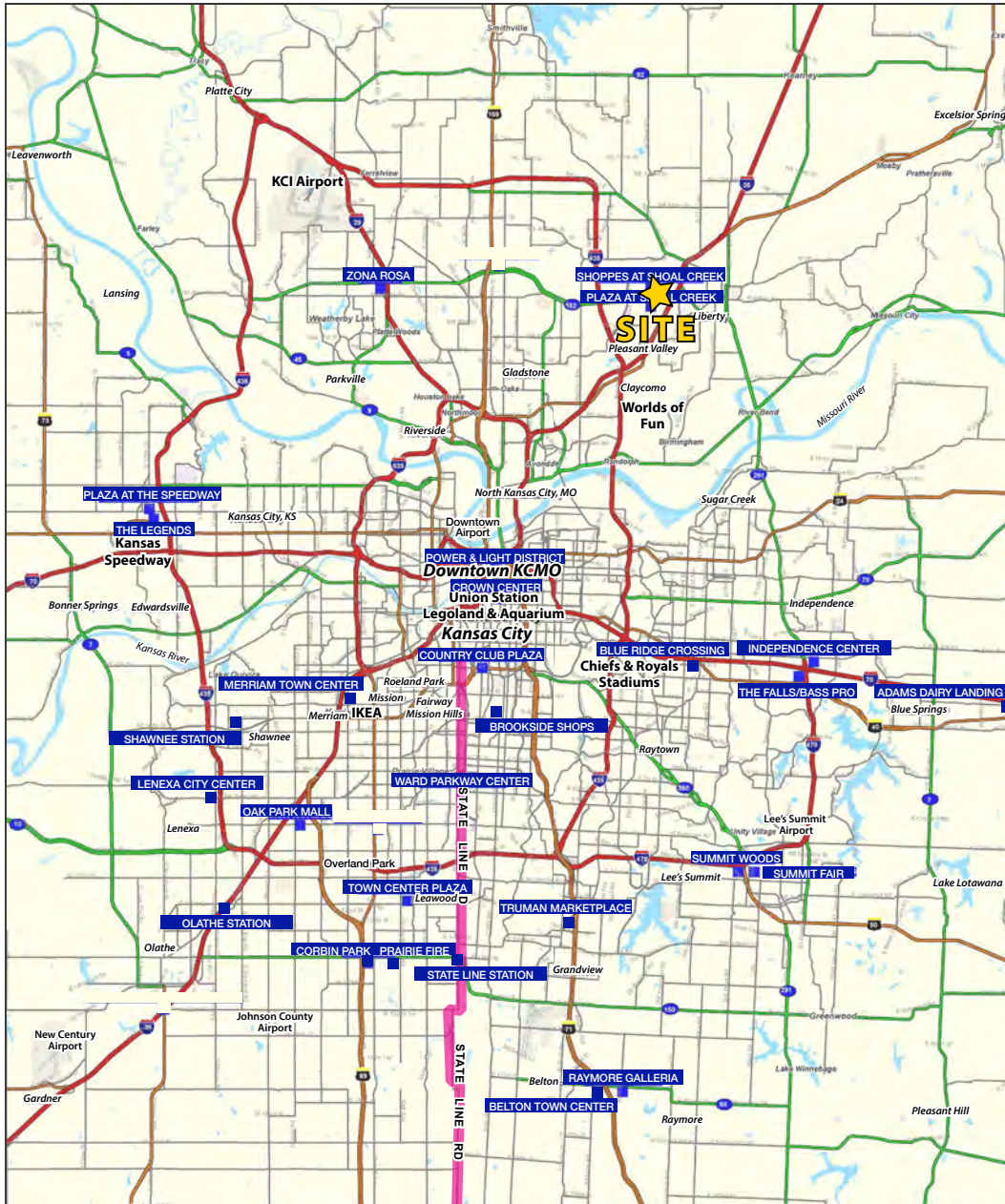






SHOPPES AT SHOAL CREEK

Junior Box & Retail Space Available | New to Market!
152 Highway & Flintlock Rd (NWC), Kansas City (Liberty), MO



Block & Company, Inc., Realtors | 605 W. 47th Street, Ste. 200, Kansas City, MO 64112 | 816.753.6000 | www.blockandco.com





SHOPPES AT SHOAL CREEK

Junior Box & Retail Space Available | New to Market!

152 Highway & Flintlock Rd (NWC), Kansas City (Liberty), MO

152 Highway & Flintlock Road Kansas City, MO 64157	1 mi radius	3 mi radius	5 mi radius
Population			
2024 Estimated Population	5,668	52,586	103,649
2029 Projected Population	6,069	55,244	108,748
2020 Census Population	5,420	51,066	101,099
2010 Census Population	3,168	42,411	85,123
Projected Annual Growth 2024 to 2029	1.4%	1.0%	1.0%
Historical Annual Growth 2010 to 2024	5.6%	1.7%	1.6%
2024 Median Age	37.8	37.8	37.7
Households			
2024 Estimated Households	2,480	20,336	39,943
2029 Projected Households	2,691	21,715	42,567
2020 Census Households	2,202	19,155	37,978
2010 Census Households	1,249	15,540	31,684
Projected Annual Growth 2024 to 2029	1.7%	1.4%	1.3%
Historical Annual Growth 2010 to 2024	7.0%	2.2%	1.9%
Race and Ethnicity			
2024 Estimated White	81.4%	84.0%	82.2%
2024 Estimated Black or African American	8.1%	6.3%	7.2%
2024 Estimated Asian or Pacific Islander	4.1%	2.7%	2.8%
2024 Estimated American Indian or Native Alaskan	0.2%	0.3%	0.3%
2024 Estimated Other Races	6.1%	6.7%	7.5%
2024 Estimated Hispanic	6.0%	6.2%	7.1%
Income			
2024 Estimated Average Household Income	\$156,106	\$138,554	\$128,876
2024 Estimated Median Household Income	\$107,288	\$107,395	\$104,098
2024 Estimated Per Capita Income	\$68,359	\$53,681	\$49,733
Education (Age 25+)			
2024 Estimated Elementary (Grade Level 0 to 8)	1.0%	2.1%	1.9%
2024 Estimated Some High School (Grade Level 9 to 11)	1.9%	2.1%	2.9%
2024 Estimated High School Graduate	20.8%	23.1%	23.7%
2024 Estimated Some College	15.4%	20.2%	21.7%
2024 Estimated Associates Degree Only	11.1%	9.6%	9.7%
2024 Estimated Bachelors Degree Only	33.0%	27.7%	26.1%
2024 Estimated Graduate Degree	16.8%	15.2%	14.0%
Business			
2024 Estimated Total Businesses	449	1,759	2,641
2024 Estimated Total Employees	4,858	16,876	23,941
2024 Estimated Employee Population per Business	10.8	9.6	9.1
2024 Estimated Residential Population per Business	12.6	29.9	39.2

©2024, Sites USA, Chandler, Arizona, 480-491-1112 Demographic Source: Applied Geographic Solutions 5/2024, TIGER Geography - RS1