

2455 FEATHERSTONE ROAD
AUBURN HILLS, MICHIGAN

HI-TECH FOR LEASE
42,597 Square Feet Available



**SIGNATURE
ASSOCIATES**
KNOW SIGNATURE | KNOW RESULTS

EXCELLENT CORPORATE HQ LOCATION



PROPERTY FEATURES

- 42,597 square feet available
- Office finished to-suit
- 24' clear height
- (2) 12' x 14', 12' x 10' grade level doors
- (1) truckwell
- Zoned Light Industrial
- 72 +/- parking spaces
- Main road signage
- 100% air-conditioned
- 2000 amps, 480 volts, 3-phase, heavy power
- Built in 2001 and located on 2.160 acres
- In the heart of Auburn Hills corridor just off I-75 and M-59 adjacent to Stellantis World HQ
- Lease Rate: \$9.75/sq. ft. NNN



For more information, please contact:

KRIS PAWLOWSKI
(248) 359 3801
kpawlowski@signatureassociates.com

SIGNATURE ASSOCIATES
One Towne Square, Suite 1200
Southfield, MI 48076
www.signatureassociates.com

2455 Featherstone Rd. – Auburn Hills, Michigan

Hi-Tech For Lease

42,597
Square Feet
AVAILABLE

Interior Photos



For more information, please contact:

KRIS PAWLOWSKI
(248) 359 3801
kpawlowski@signatureassociates.com

SIGNATURE ASSOCIATES
One Towne Square, Suite 1200
Southfield, MI 48076
www.signatureassociates.com

Information is subject to verification and no liability for errors or omissions is assumed. Price is subject to change and listing withdrawal.

2455 Featherstone Rd. – Auburn Hills, Michigan

Hi-Tech For Lease

42,597
Square Feet
AVAILABLE

Interior Photos



For more information, please contact:

KRIS PAWLOWSKI
(248) 359 3801
kpawlowski@signatureassociates.com

SIGNATURE ASSOCIATES
One Towne Square, Suite 1200
Southfield, MI 48076
www.signatureassociates.com

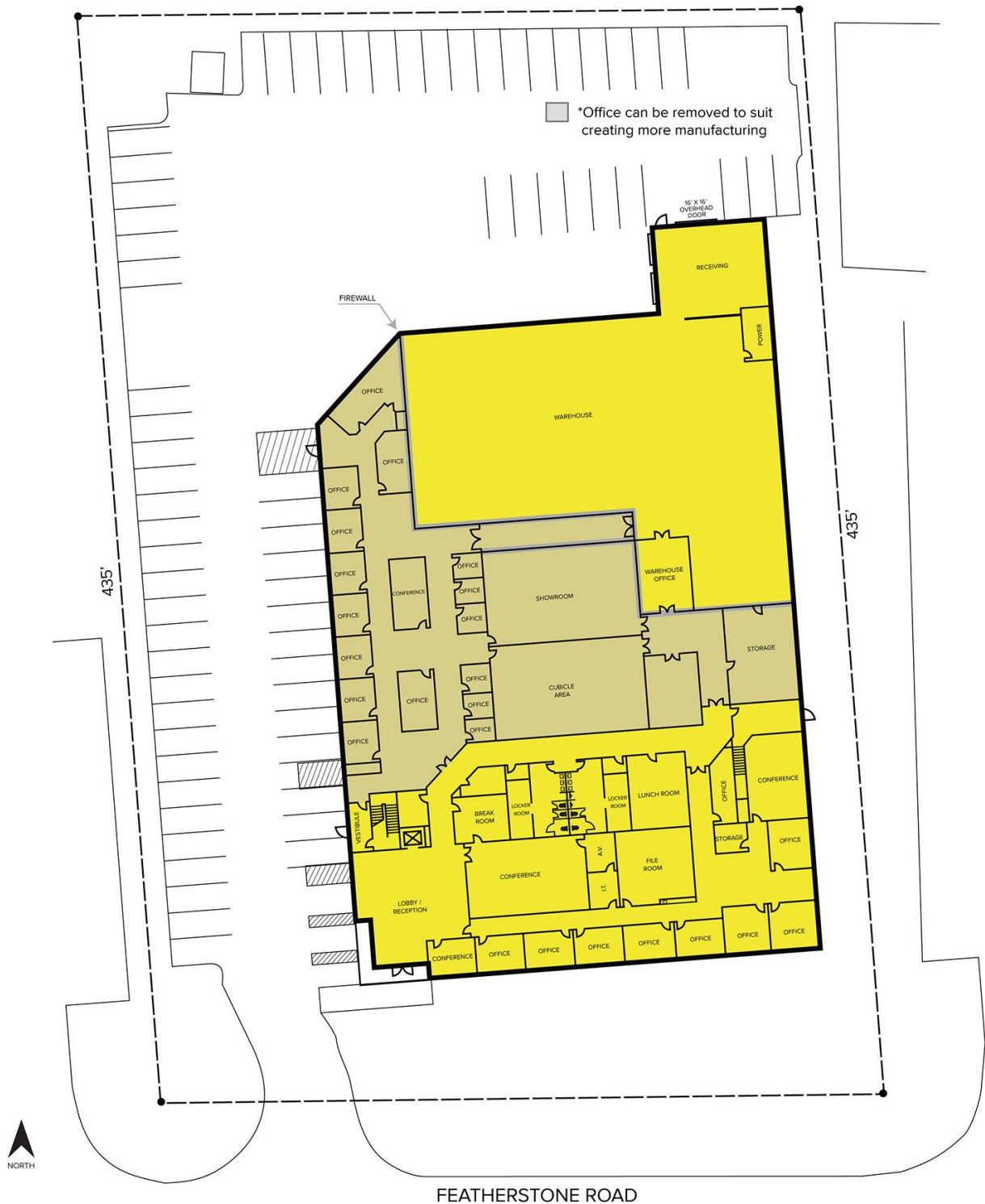
Information is subject to verification and no liability for errors or omissions is assumed. Price is subject to change and listing withdrawal.

2455 Featherstone Rd. – Auburn Hills, Michigan

Hi-Tech For Lease

42,597
Square Feet
AVAILABLE

Site Plan



For more information, please contact:

KRIS PAWLOWSKI
(248) 359 3801
kpawlowski@signatureassociates.com

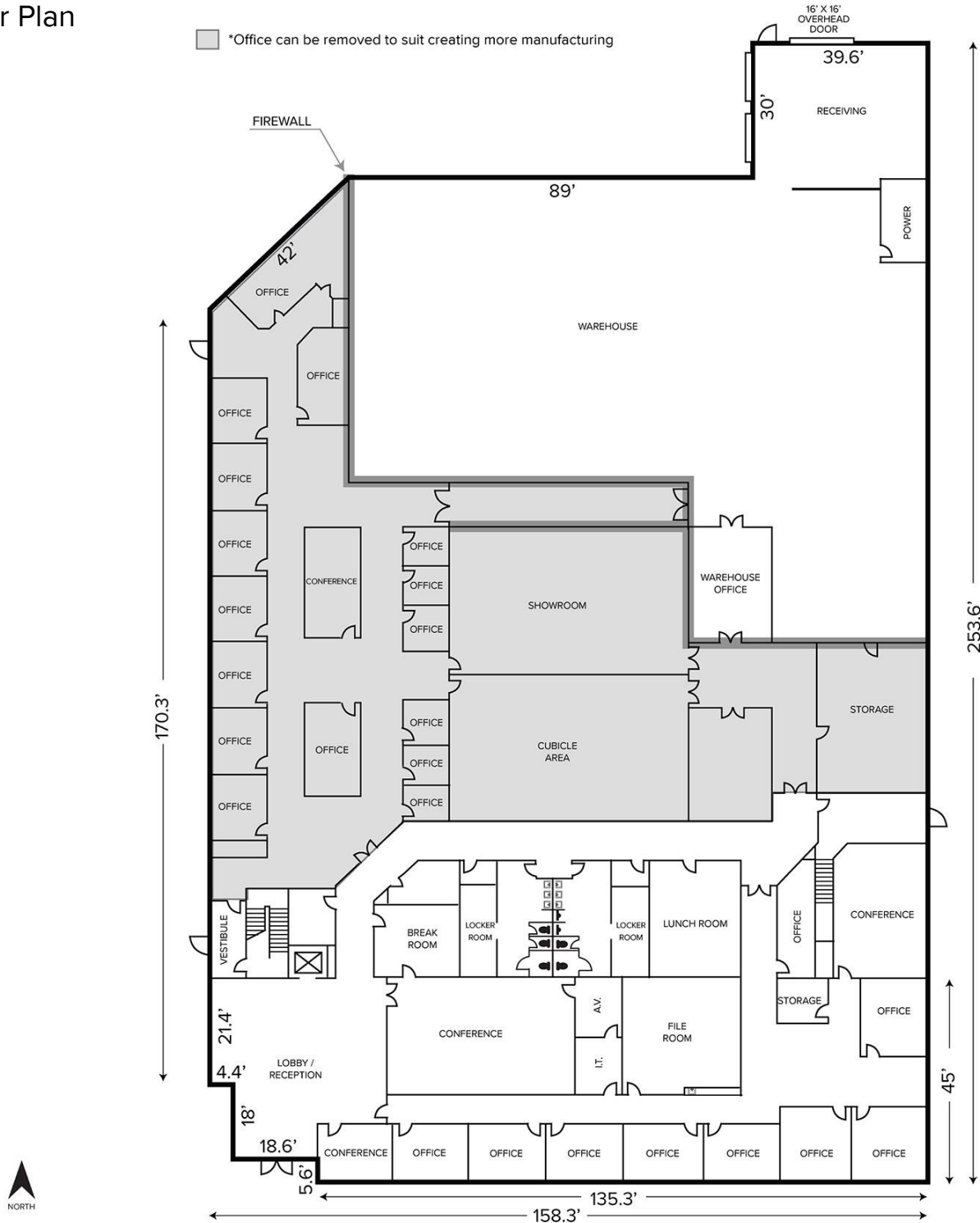
SIGNATURE ASSOCIATES
One Towne Square, Suite 1200
Southfield, MI 48076
www.signatureassociates.com

2455 Featherstone Rd. – Auburn Hills, Michigan

Hi-Tech For Lease

42,597
Square Feet
AVAILABLE

Floor Plan



For more information, please contact:

KRIS PAWLOWSKI
(248) 359 3801
kpawlowski@signatureassociates.com

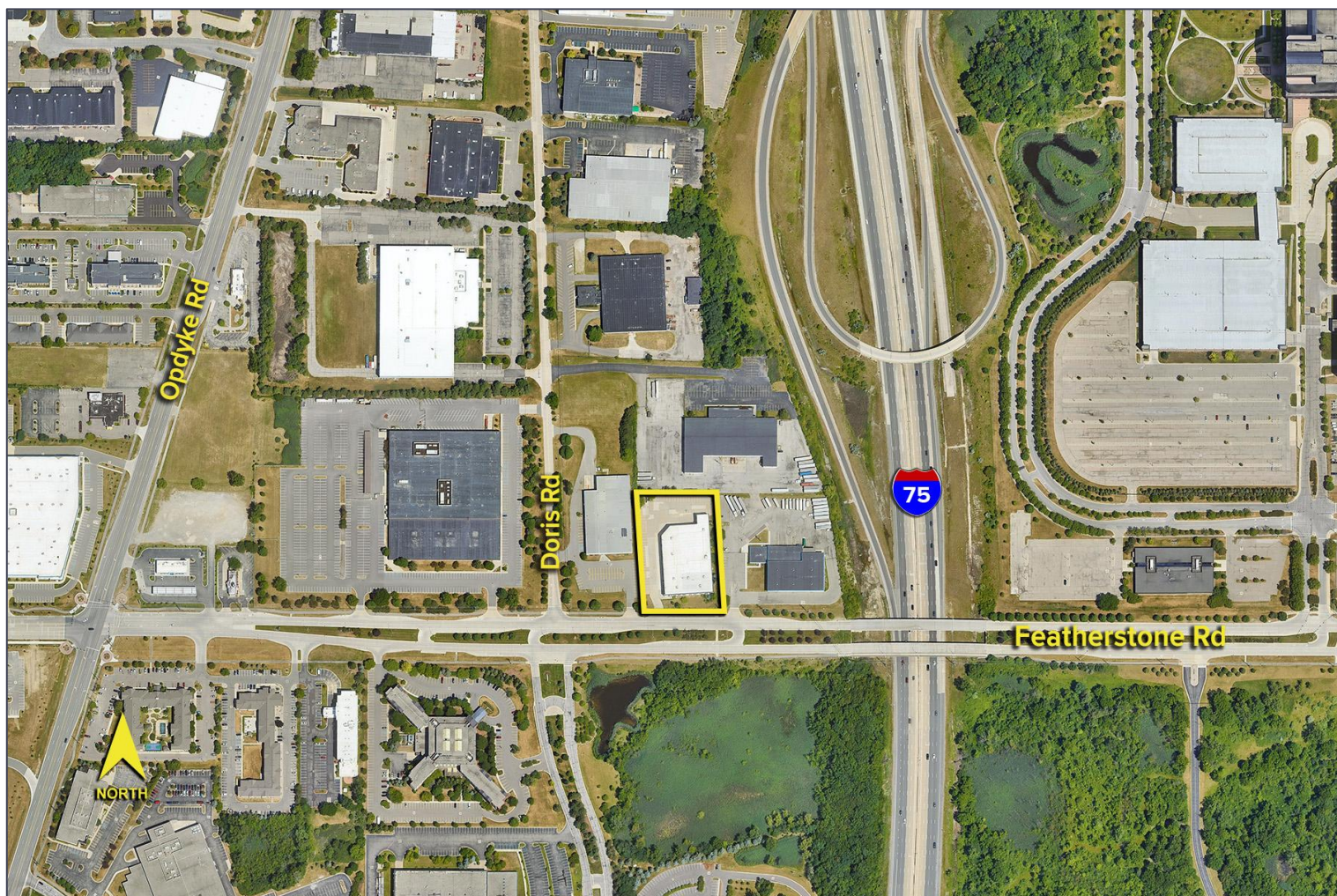
SIGNATURE ASSOCIATES
One Towne Square, Suite 1200
Southfield, MI 48076
www.signatureassociates.com

2455 Featherstone Rd. – Auburn Hills, Michigan

Hi-Tech For Lease

42,597
Square Feet
AVAILABLE

Aerial



For more information, please contact:

KRIS PAWLOWSKI
(248) 359 3801
kpawlowski@signatureassociates.com

SIGNATURE ASSOCIATES
One Towne Square, Suite 1200
Southfield, MI 48076
www.signatureassociates.com

Information is subject to verification and no liability for errors or omissions is assumed. Price is subject to change and listing withdrawal.