

# OFFICE SUITES AVAILABLE FOR LEASE

1601 E BELL RD | PHOENIX, AZ

**\$12.00 - \$18.50/SF  
PER YEAR NNN**

SUITE B-2 | ±3,000 SF  
SUITE B-4 | ±2,900 SF  
SUITE B-9 | ±1,500 SF

**PLAZA 16**



## PROPERTY DETAILS

- Building & Monument Signage Available
- Most Retail, Office and Light Industrial Uses Allowed
- Parking: 4/1000
- Bell Rd Frontage

**contact:**



**Brandon Koplin**  
D 480.214.1103  
M 602.373.4717  
bkoplin@cpiaz.com

The information contained herein has been obtained from various sources. We have no reason to doubt its accuracy; however, J & J Commercial Properties, Inc. has not verified such information and makes no guarantee, warranty or representation about such information. The prospective buyer or lessee should independently verify all dimensions, specifications, floor plans, and all information prior to the lease or purchase of the property. All offerings are subject to prior sale, lease, or withdrawal from the market without prior notice.

05 01 24



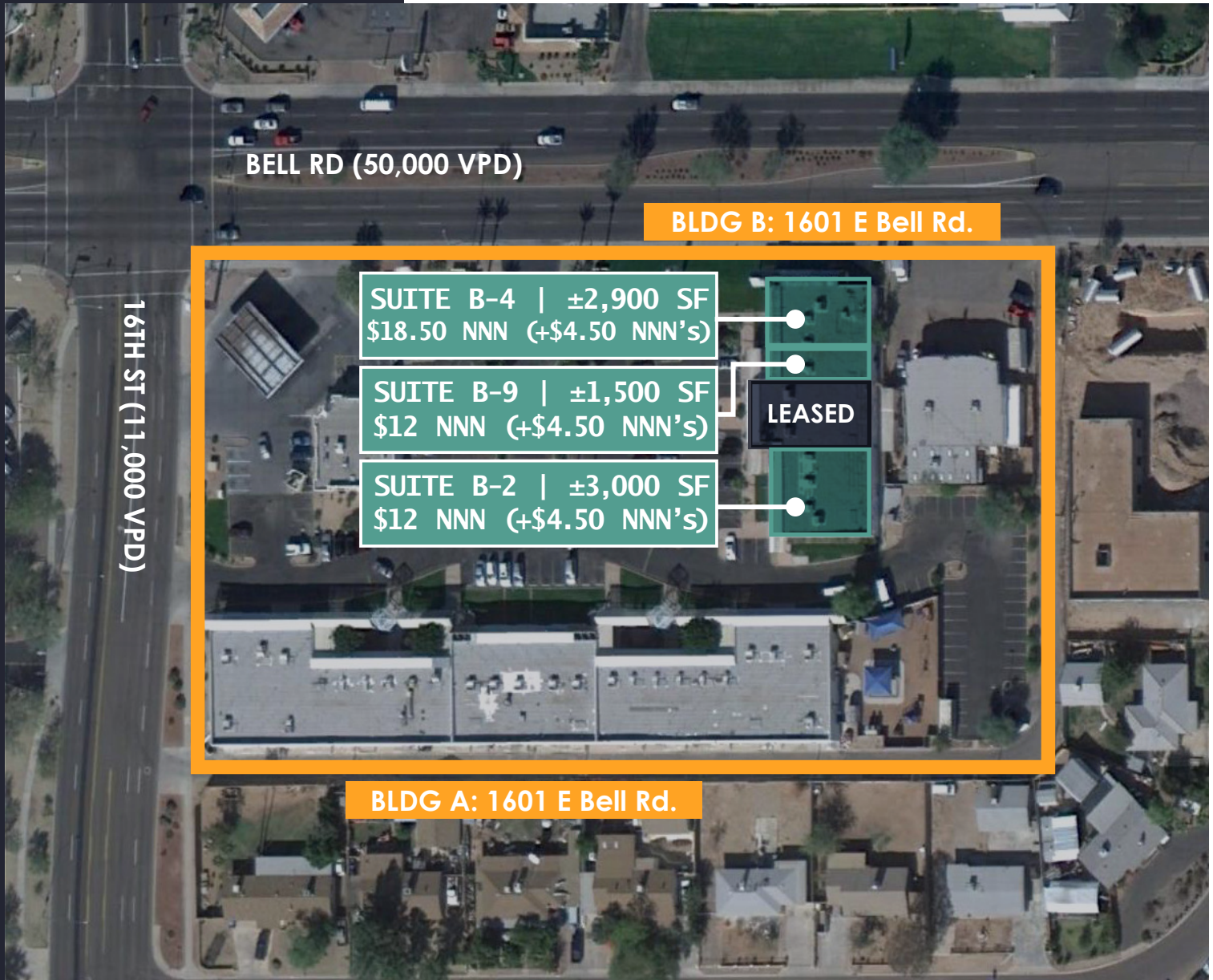
**COMMERCIAL PROPERTIES INC.**

Locally Owned. Globally Connected. CONTACT

TEMPE: 2323 W University Drive, Tempe, AZ 85281 | 480.966.2301  
SCOTTSDALE: 8767 E Via de Commercio, Suite 101, Scottsdale, AZ 85258 | www.cpiaz.com

# OFFICE SPACE AVAILABLE FOR LEASE

1601 E. BELL RD. | PHOENIX AZ



## DEMOGRAPHICS

	1 Mile	3 Mile	5 Mile
2018 Population:	20,817	142,620	326,058
2023 Population:	22,553	154,094	352,409
2018 Households:	8,973	58,487	132,676
Median HHI:	\$47,268	\$54,832	\$55,847

The information contained herein has been obtained from various sources. We have no reason to doubt its accuracy; however, J & J Commercial Properties, Inc. has not verified such information and makes no guarantee, warranty or representation about such information. The prospective buyer or lessee should independently verify all dimensions, specifications, floor plans, and all information prior to the lease or purchase of the property. All offerings are subject to prior sale, lease, or withdrawal from the market without prior notice.

01.06.26



**Brandon Koplin**

D 480.214.1103

M 602.373.4717

bkoplin@cpiaz.com



**COMMERCIAL PROPERTIES INC.**

Locally Owned, Globally Connected, CORFAC

TEMPE: 2323 W University Drive, Tempe, AZ 85281 | 480.966.2301  
SCOTTSDALE: 8767 E Via de Commercio, Suite 101, Scottsdale, AZ 85258 | www.cpiaz.com