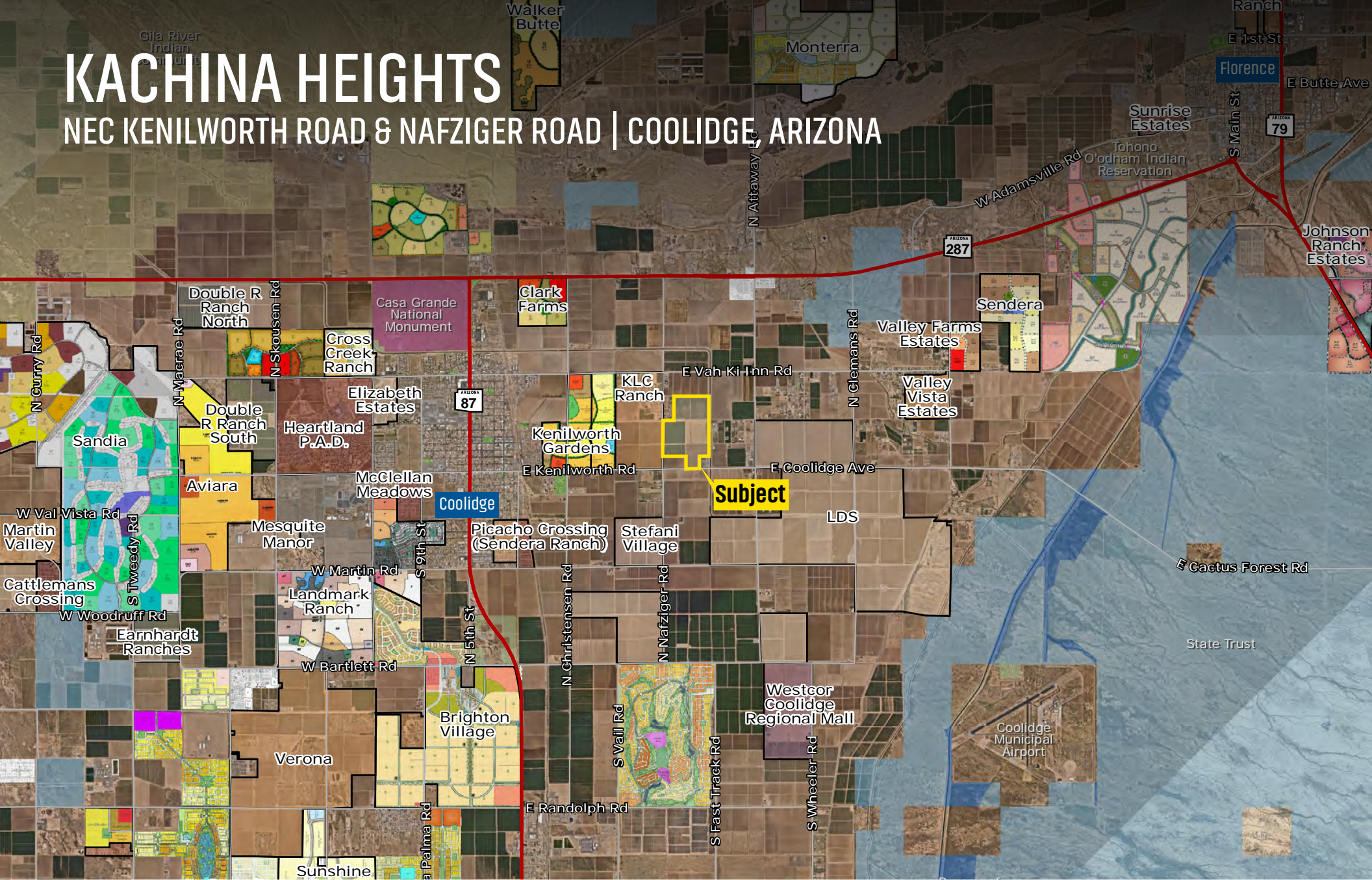


KACHINA HEIGHTS

NEC KENILWORTH ROAD & NAFZIGER ROAD | COOLIDGE, ARIZONA



CONTACT FOR MORE INFORMATION

Mike Schwab
mschwab@landadvisors.com
480.874.4330

Ben Heglie
bheglie@landadvisors.com
480.874.4302

Kirk P. McCarville, CCIM
kmcCarville@landadvisors.com
520.251.0348

Trey Davis
tdavis@landadvisors.com
602.363.3901



480.483.8100 | landadvisors.com

EXECUTIVE SUMMARY



LOCATION

The Property is located at the northeast corner of Kenilworth Road & Nafziger Road in Coolidge, Arizona



SIZE

±190 acres (±93 acres unentitled; ±97 acres platted for 810 lots)



LOTS

43' x 115' – 320 Lots

48' x 115' – 290 Lots

52' x 120' – 200 Lots

Total – 810 Lots

[Click here to view Final Plat](#)



PRICE

\$3,230,000 (\$17,000/AC)



ZONING

Medium Density

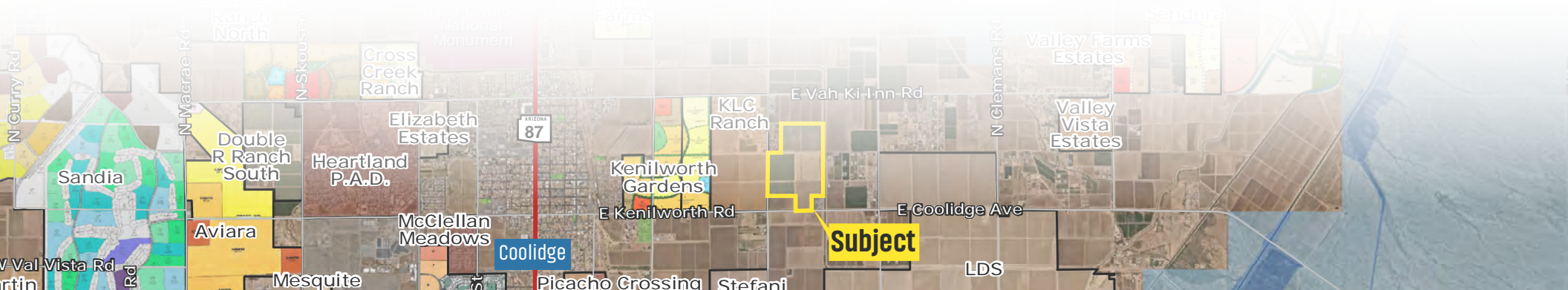
Single Family Residential

PAD – [Click here to view the Kachina Heights PAD](#)



UTILITIES

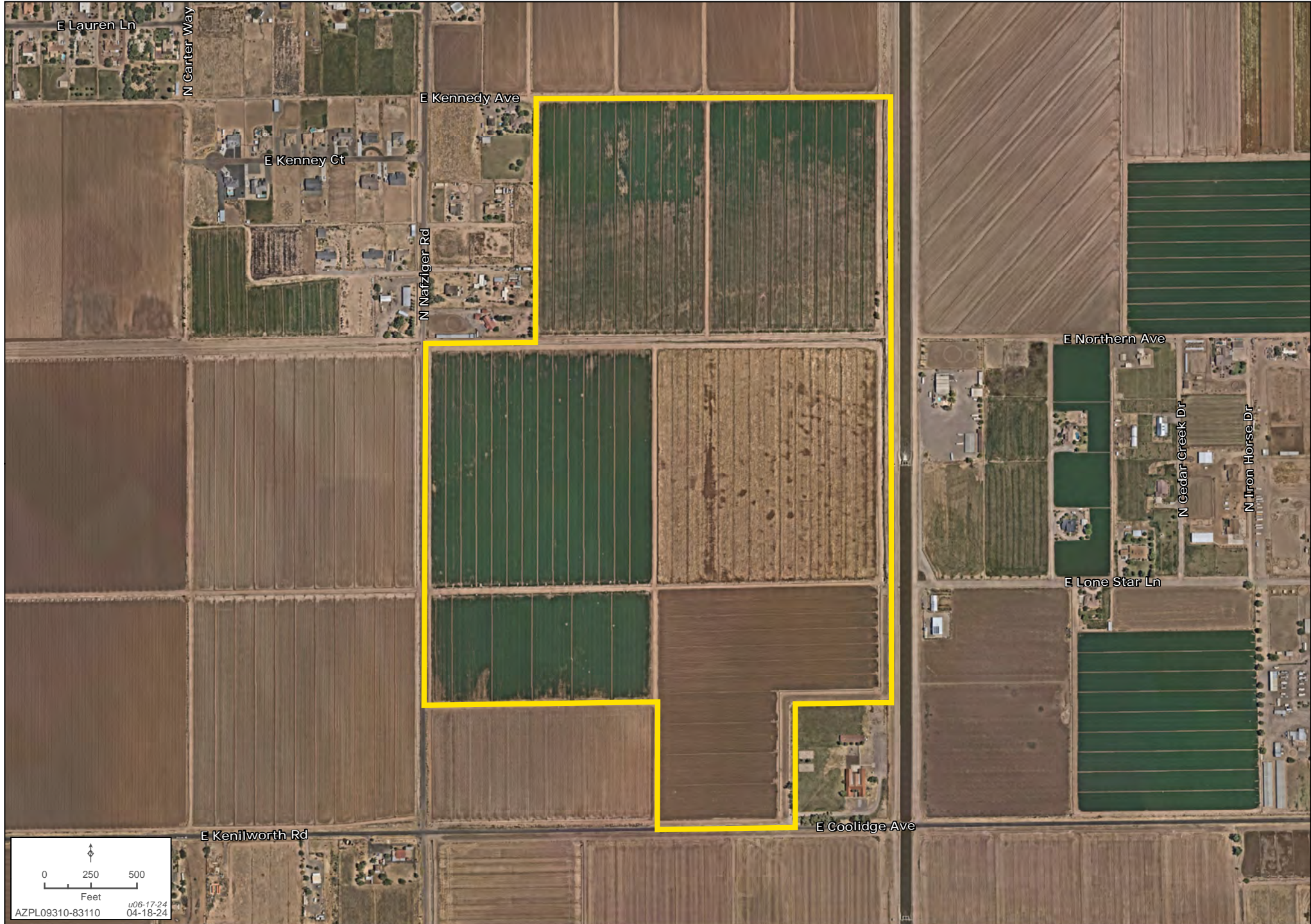
- Electric – ED2 or Hohokam can provide services
- Potable Water – Portion of the property is within service area of Arizona Water Company. The remaining portion will need to be annexed into the existing CC&N. Arizona Water Company does not have a Certificate of Assured Water Supply for lands within CC&N. Unknown if and when said CAWS will be available in the future.
- Gas – Southwest Gas
- Sewer – City of Coolidge
- Irrigation – San Carlos Irrigation District



The information contained herein is from sources deemed reliable. We have no reason to doubt its accuracy but do not guarantee it. It is the responsibility of the person reviewing this information to independently verify it. This package is subject to change, prior sale or complete withdrawal.

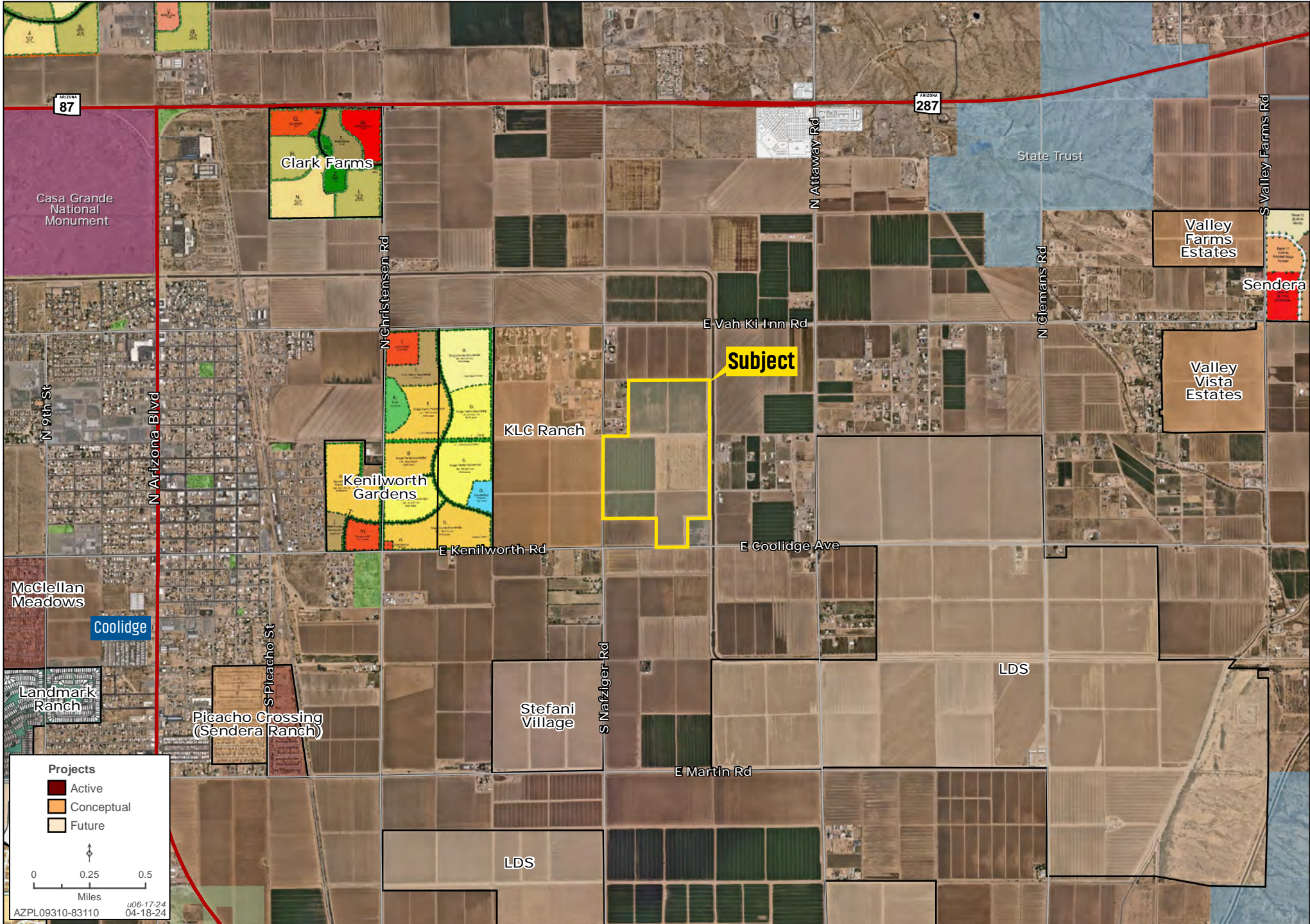
DETAIL

Mike Schwab | Ben Heglie | Kirk P. McCarville, CCIM | Trey Davis | 520.251.0348 | landadvisors.com



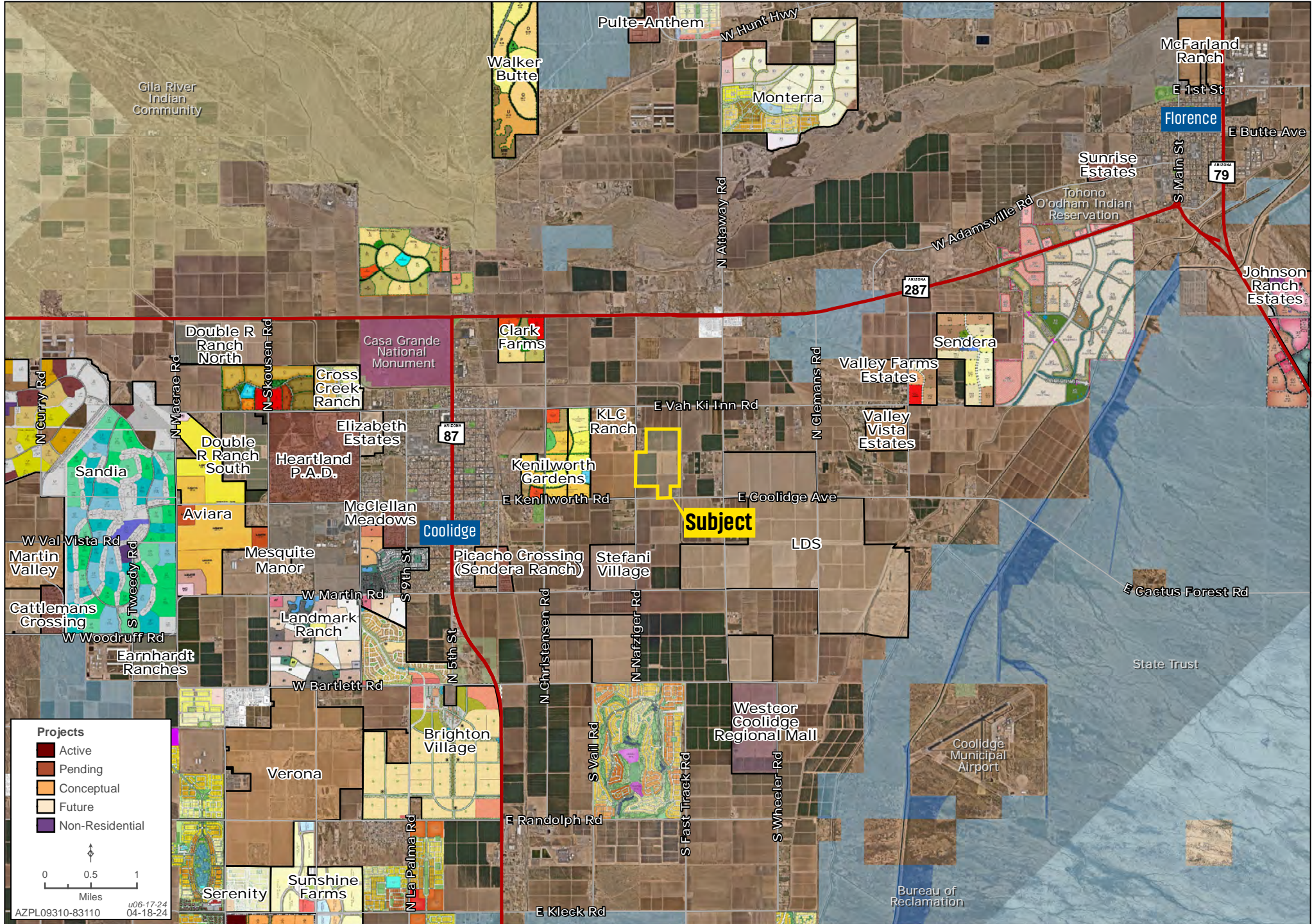
AREA

Mike Schwab | Ben Heglie | Kirk P. McCarville, CCIM | Trey Davis | 520.251.0348 | landadvisors.com



DEVELOPMENT

Mike Schwab | Ben Heglie | Kirk P. McCarville, CCIM | Trey Davis | 520.251.0348 | landadvisors.com



REGIONAL

Mike Schwab | Ben Heglie | Kirk P. McCarville, CCIM | Trey Davis | 520.251.0348 | landadvisors.com



PINAL COUNTY HIGHLIGHTS | [CLICK THE LINKS BELOW FOR MORE INFORMATION](#)



[New Jobs](#)

[Coming to](#)
[Pinal County](#)



[Labor](#)

[Report](#)



[Casa Grande](#)

[Incentive](#)
[Package](#)



[Pinal County](#)

[Incentive](#)
[Package](#)



[4Q23](#)

[Market](#)
[Insights](#)



[About](#)

[Land Advisors](#)
[Organization](#)

The information in this email and any attachments regarding any property has been obtained from sources believed reliable, but we have not verified it and we make no guarantee, warranty, or representation as to its accuracy or completeness, and we do not undertake to update or correct any of the information presented. Any projections, opinions, assumptions, or estimates ("forward-looking statements") used are, for example, only and do not represent the current or future performance of the property and actual results may differ materially from such forward-looking statement due to, without limitation, changes in: (i) the market, (ii) governmental legal, regulatory or permitted use changes, and (iii) other factors. You and your advisors should conduct a careful, independent investigation of the property to determine to your satisfaction the property's suitability for your needs. Any reliance on this information is at your own risk and is subject to change, prior sale or complete withdrawal. AZPL09310 - 06.27.2024.



[LandAdvisors.com](https://www.LandAdvisors.com)