

4301

CONNECTICUT AVE NW

At the Intersection of
Office & Community



Where Convenience Meets Connectivity

Van Ness is located in the heart of Washington D.C.'s bustling commercial hub, surrounded by a mix of dining, shopping, recreational, and residential areas. With the neighborhood's proximity to transportation options, universities, government institutions, and other key DC hot spots, 4301 Connecticut Avenue is the place for businesses looking to set up shop in a well-connected and dynamic community.



4301 CONNECTICUT AVENUE NW



All You Need and More, At Your Door

WHAT'S NEARBY

Transit

 Van Ness-UDC Metro Stop

 Capital Bikeshare

Universities & Embassies

 University of the District of Columbia

 Howard University School of Law

 Embassies at the International
Chancery Center (ICC)

4301 CONNECTICUT AVENUE NW



Hassle-Free Office Solutions

The search for ready-to-move-in spec suites in Van Ness is over. With unobstructed views of Connecticut Avenue and floor plans that balance collaboration and focus, 4301 Connecticut Avenue's **newly delivered spec suites**, are ideal for tenants ready to hit the ground running.

BUILDING HIGHLIGHTS



Direct Metro Access
Van Ness-UDC Metro



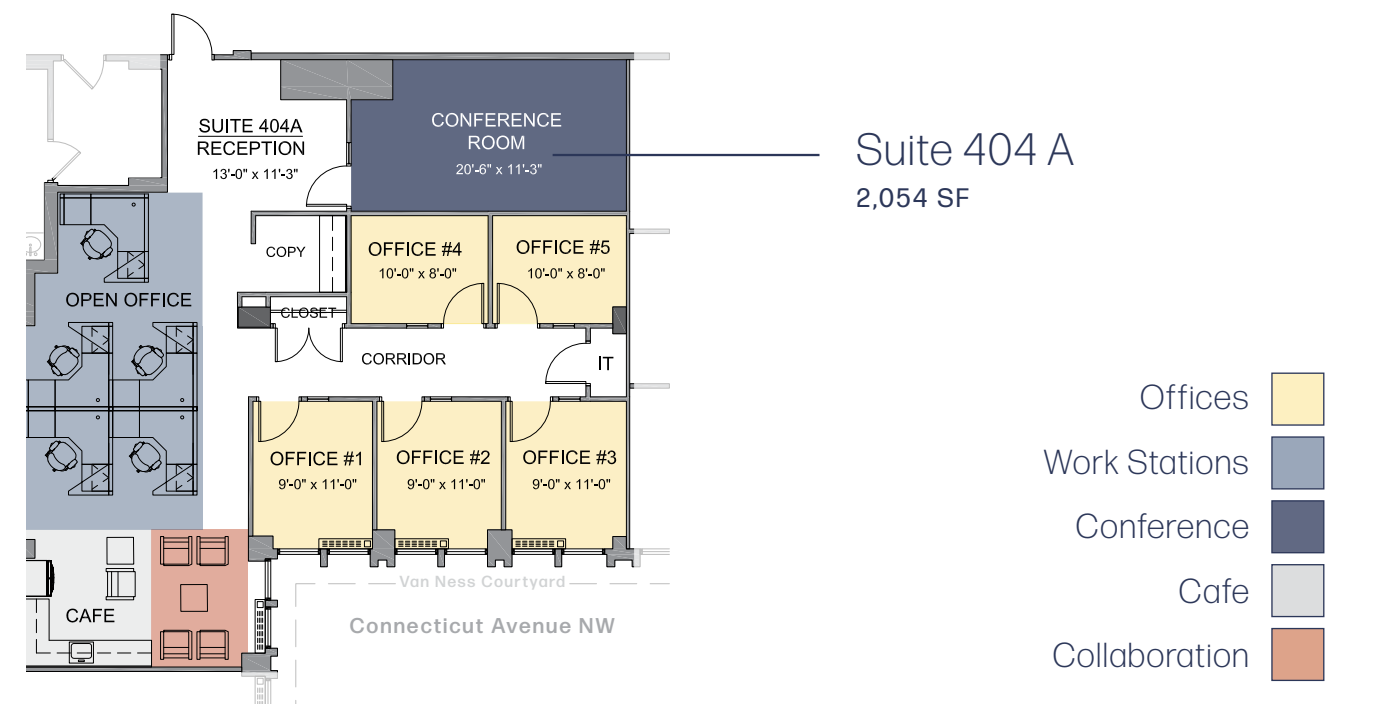
4 Sides of Glass with
Expansive Views



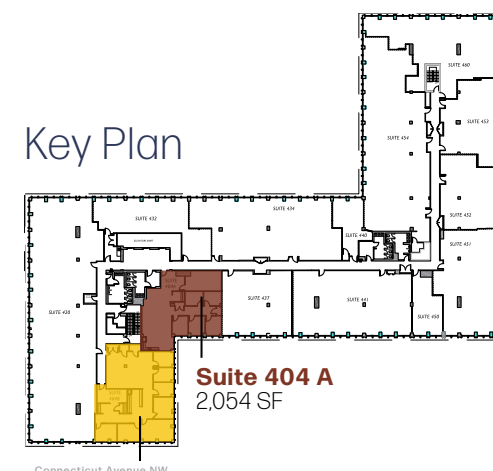
Abundant Garage
Parking



Strong Sponsorship



Key Plan



Suite 404 B
2,812 SF

Suite 404 B
2,812 SF



4301

CONNECTICUT AVE NW



For more information, **contact:**

Joe Michel

202.590.6442

joe.michel@transwestern.com

Scott Fetterolf

202.775.7012

scott.fetterolf@transwestern.com

Michael McGraw

202.617.2339

michael.mcgraw@transwestern.com

2000 K Street NW | Suite 1000 | Washington, DC 20006 | 202.775.7000 | www.transwestern.com