

FOR LEASE

DAVIE INDUSTRIAL CENTER

3055 BURRIS ROAD • BUILDING I • DAVIE, FL 33314

CBRE



*Conceptual rendering only.

INFILL HEAVY INDUSTRIAL BUILD-TO-SUIT SITE

HIGHLIGHTS

- » Tremendous parking & outdoor storage capabilities
- » Low coverage industrial development
- » Spec development in process
- » Fully secured site
- » Campus like environment
- » Build-to-suit opportunity
- » Incredible highway accessibility; Frontage on I-595 & Florida's Turpike, I-95
- » Site is located in a qualified HUBZone

AVAILABLE SPACE FROM
60,000-184,957 SF

AVAILABLE FOR OUTSIDE
STORAGE AND/OR PARKING
12 ACRES

TOTAL LAND SIZE
38.51 ACRES

EXPECTED COMPLETION
Q2 2025

CONTACT US

LARRY GENET
EXECUTIVE VICE PRESIDENT
C 786.496.0440
E LARRY.GENET@CBRE.COM

TOM O'LOUGHLIN
VICE CHAIRMAN
C 954.817.3919
E TOM.OLOUGHLIN@CBRE.COM



INDUSTRIAL
OUTDOOR VENTURES

STOCKBRIDGE
CORE AND VALUE ADVISORS

BUILDING AVAILABILITY SPECS

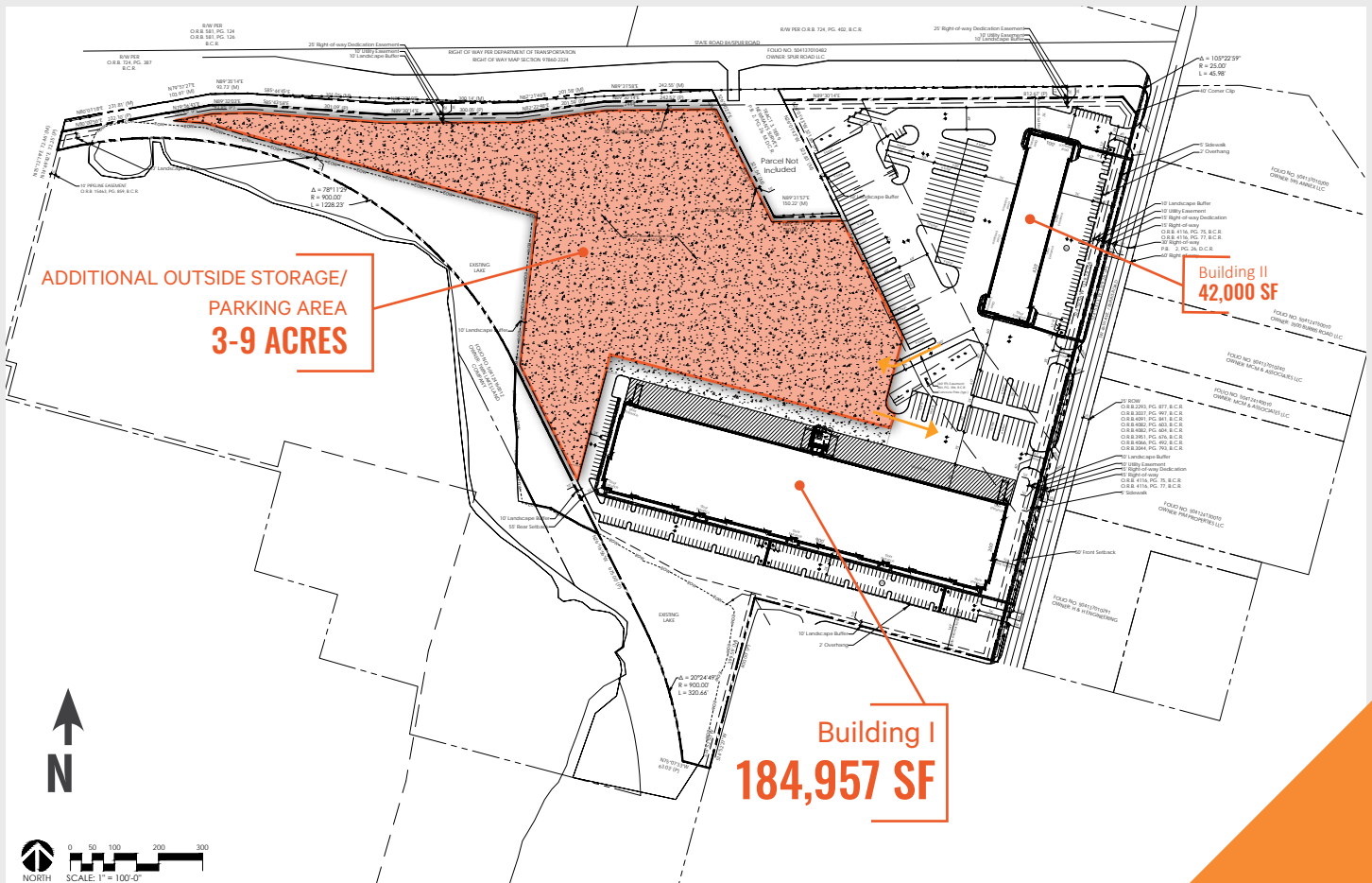
BUILDING 1

184,957 SF

- Building size: 184,957 SF
- Divisible to: 60,000 SF
- Spec Office: Build-to-suit (plans include 18,000 SF of office)
- Clear Height: 36'
- Exterior docks: 51
- Drive in doors: 4
- 12 acres of additional land available for parking or storage
- Bay size 54' x 200'

BUILD-TO-SUIT OPPORTUNITIES

SITE PLAN



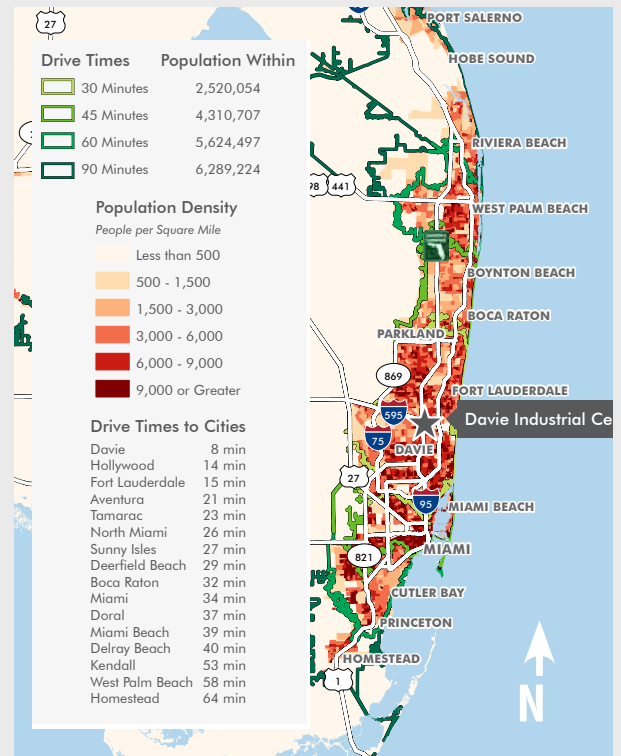
PROPERTY HIGHLIGHTS

On behalf of the Owner, CBRE, as exclusive marketing advisor, is pleased to offer a ±38.51 acre low coverage industrial development site located in Broward County, Florida. The property is ideally located between I-95 and the Florida Turnpike just south of I-595 with immediate access to all major highways.

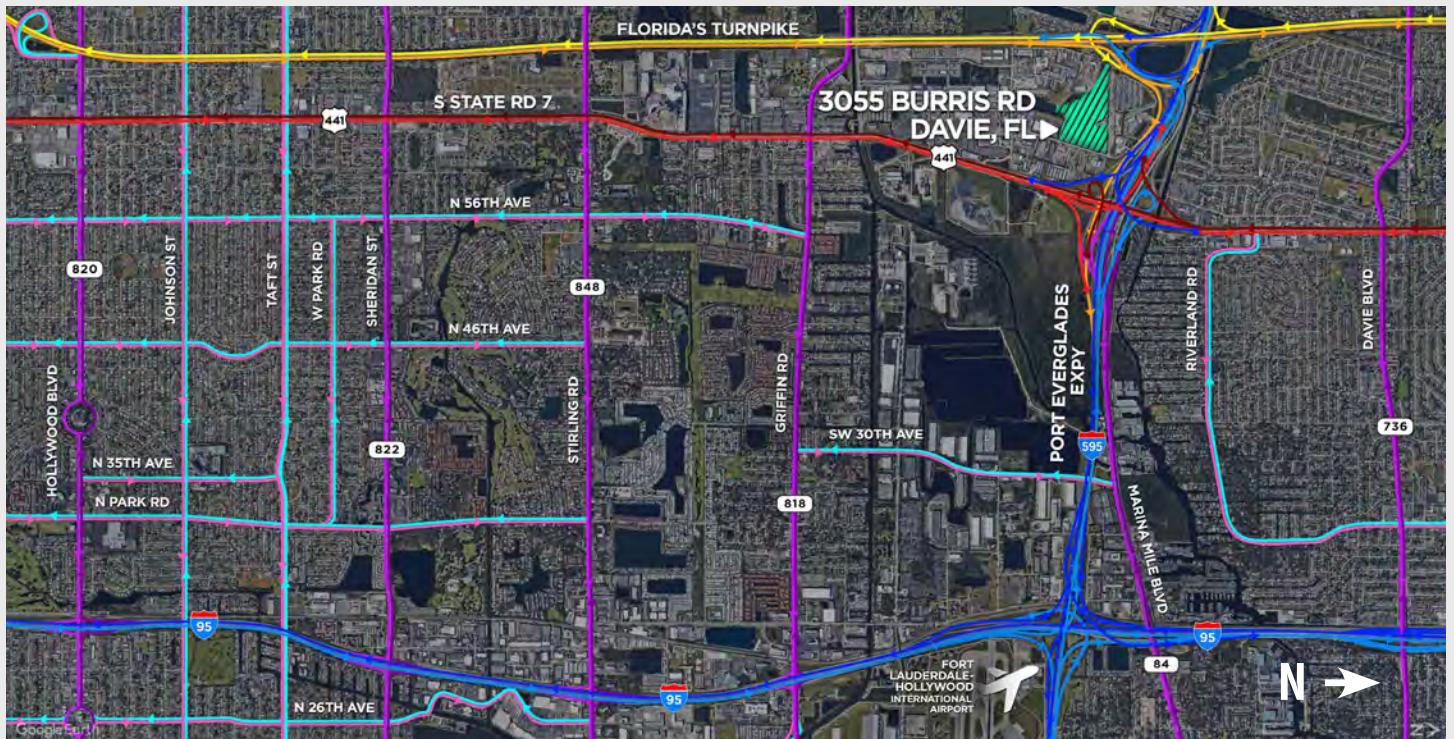
- Area tenants include Pepsi, Clorox, Shipmonk, XPO, Publix, Old Dominion and major e-commerce companies
- Site can accommodate an e-commerce, distribution, corporate headquarters or manufacturing operation with heavy parking requirements
- Please inquire for lease rate or build-to-suit opportunities

DETAILS

PROPERTY ADDRESS	3055 Burriss Road, Davie, FL 33314
LOT SIZE	±38.51 acres
ZONING	M-4, Town of Davie

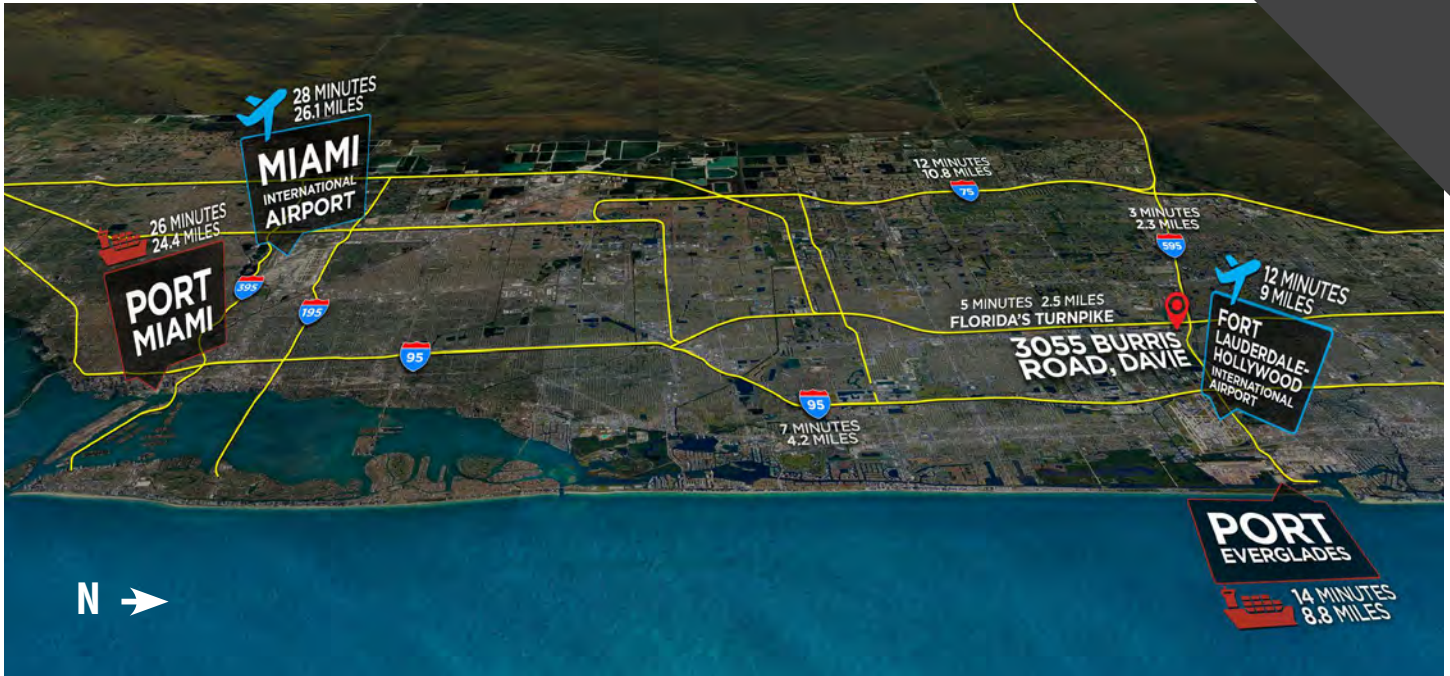


LOCAL AREA ACCESS



© 2024 CBRE, Inc. All rights reserved. This information has been obtained from sources believed reliable, but has not been verified for accuracy or completeness. You should conduct a careful, independent investigation of the property and verify all information. Any reliance on this information is solely at your own risk. CBRE and the CBRE logo are service marks of CBRE, Inc. All other marks displayed on this document are the property of their respective owners, and the use of such logos does not imply any affiliation with or endorsement of CBRE. Photos herein are the property of their respective owners. Use of these images without the express written consent of the owner is prohibited.

ACCESS AERIAL



ADDITIONAL VIEWS



CONTACT US

LARRY GENET
EXECUTIVE VICE PRESIDENT
C 786.496.0440
E LARRY.GENET@CBRE.COM

TOM O'LOUGHLIN
VICE CHAIRMAN
C 954.817.3919
E TOM.OLOUGHLIN@CBRE.COM

