

FOR LEASE

 BALTIMORE COUNTY, MD

3114 LORD BALTIMORE DR

EXECUTIVE PARK WEST | 3100-3300 LORD BALTIMORE DRIVE | WINDSOR MILL, MD 21244



PROPERTY HIGHLIGHTS:

- ▶ RECENTLY ADDED! FITNESS CENTER AND CONFERENCE ROOM
- ▶ TOTAL OF 450,000 SQUARE FEET IN TWELVE BUILDINGS IN THIS 30-ACRE BUSINESS PARK
- ▶ WITHIN 3 MILES OF SOCIAL SECURITY ADMINISTRATION HEADQUARTERS AND CENTER FOR MEDICARE AND MEDICAID SERVICES
- ▶ WITHIN TWO (2) MILES OF BELTWAY EXIT 17 AT SECURITY BOULEVARD

 **DAVID S. BROWN**
ENTERPRISES, LTD.

KEVIN KEANE | SVP, OFFICE LEASING
📞 410.581.2519 ✉️ KEVIN@DAVIDSBROWN.COM

BRENT MANGUM | VP, OFFICE LEASING
📞 410.581.2518 ✉️ BRENT@DAVIDSBROWN.COM

NOAH ADLER | LEASING ASSOCIATE
📞 410.581.2510 ✉️ NADLER@DAVIDSBROWN.COM

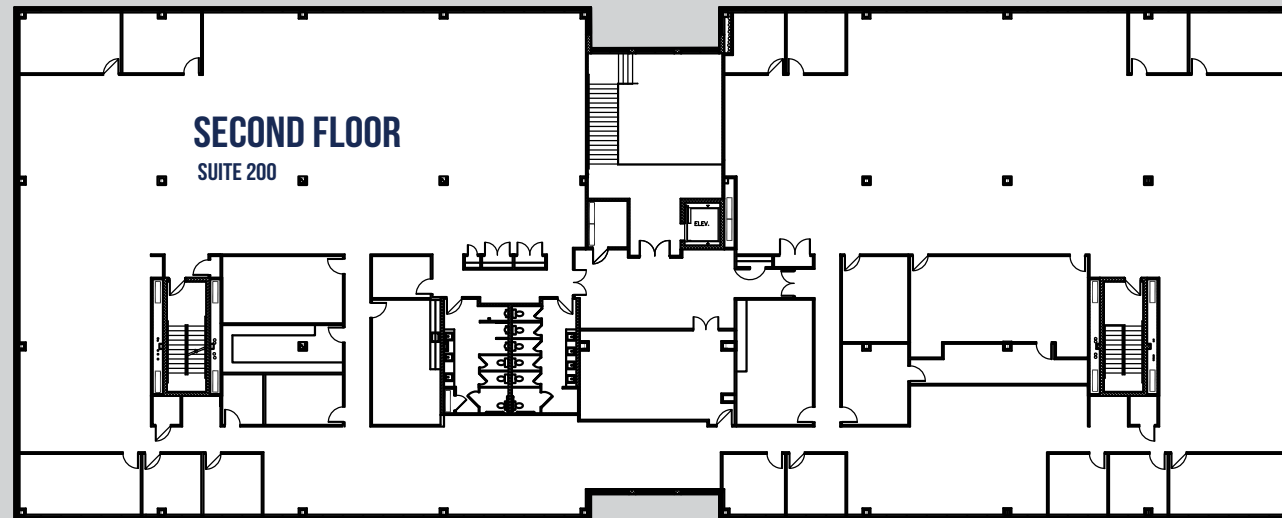
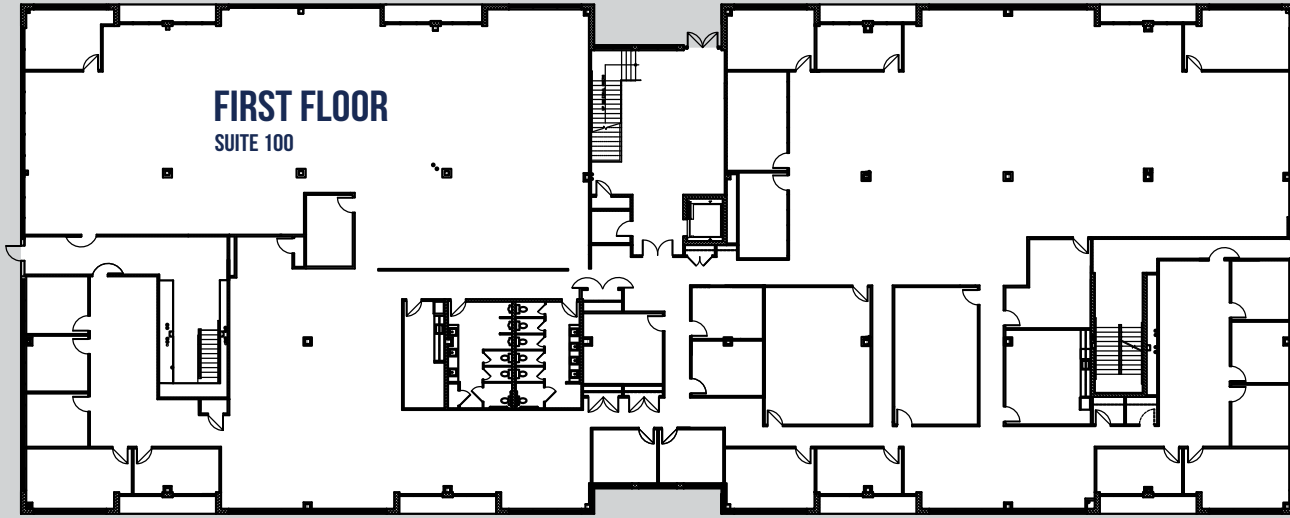
DAVID S. BROWN ENTERPRISES | 100 PAINTERS MILL ROAD, OWINGS MILLS, MD 21117 | 410.581.2520 | WWW.DAVIDSBROWN.COM | 

FOR LEASE

B BALTIMORE COUNTY, MD

3114 LORD BALTIMORE DR

EXECUTIVE PARK WEST | 3100-3300 LORD BALTIMORE DRIVE | WINDSOR MILL, MD 21244



AVAILABLE

- ▶ SUITE 100 - 23,247 SF
- ▶ SUITE 200 - 24,207 SF

SUITE 100 VIRTUAL TOUR ▶

SUITE 200 VIRTUAL TOUR ▶

DAVID S. BROWN
ENTERPRISES, LTD.

KEVIN KEANE | SVP, OFFICE LEASING
410.581.2519 | KEVIN@DAVIDSBROWN.COM

BRENT MANGUM | VP, OFFICE LEASING
410.581.2518 | BRENT@DAVIDSBROWN.COM

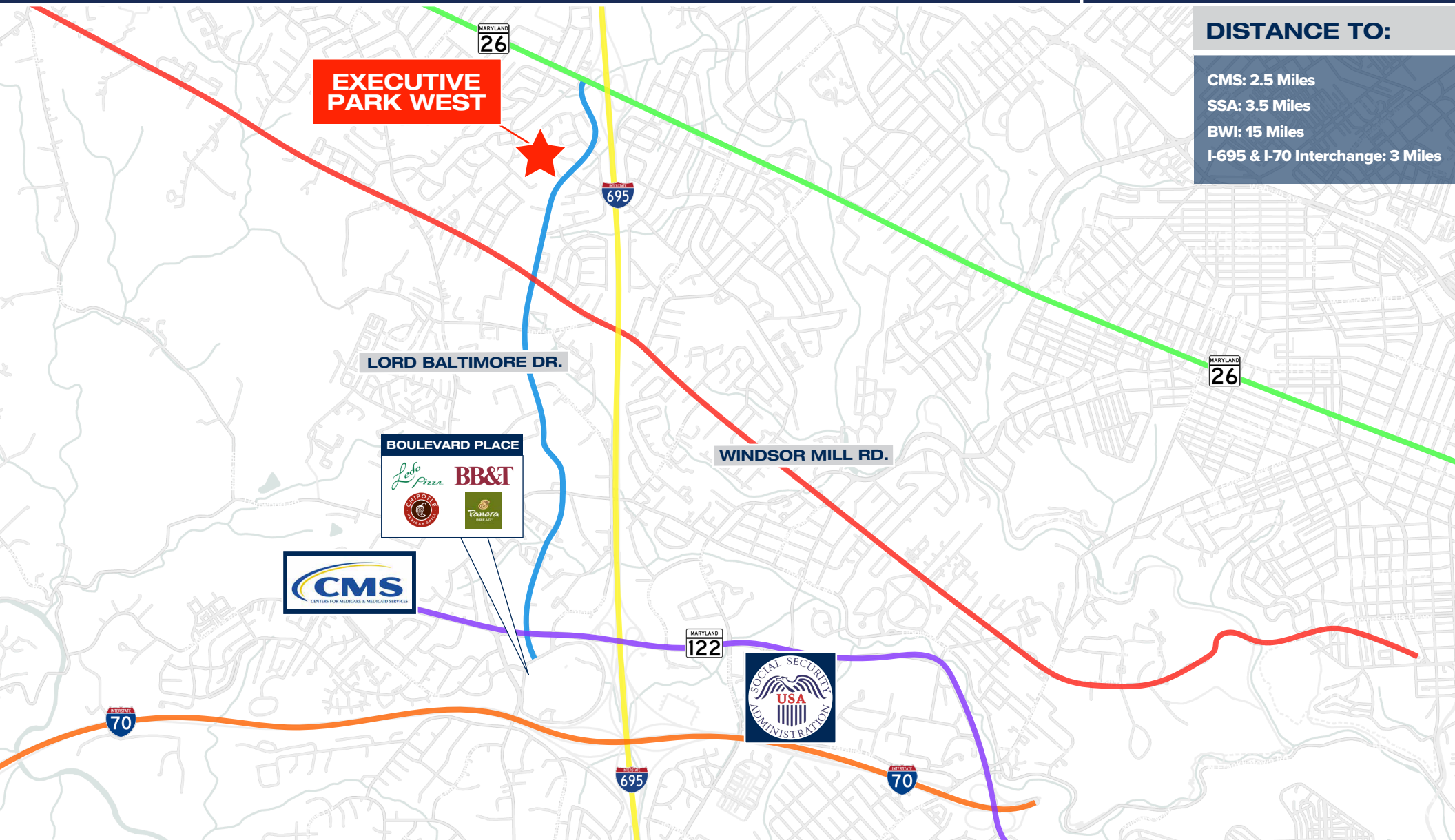
NOAH ADLER | LEASING ASSOCIATE
410.581.2510 | NADLER@DAVIDSBROWN.COM

DAVID S. BROWN ENTERPRISES | 100 PAINTERS MILL ROAD, OWINGS MILLS, MD 21117 | 410.581.2520 | WWW.DAVIDSBROWN.COM | [f](#) [@](#) [t](#) [in](#)

3114 LORD BALTIMORE DR

EXECUTIVE PARK WEST | 3100-3300 LORD BALTIMORE DRIVE | WINDSOR MILL, MD 21244

MAP



DISTANCE TO:

CMS: 2.5 Miles
SSA: 3.5 Miles
BWI: 15 Miles
I-695 & I-70 Interchange: 3 Miles