

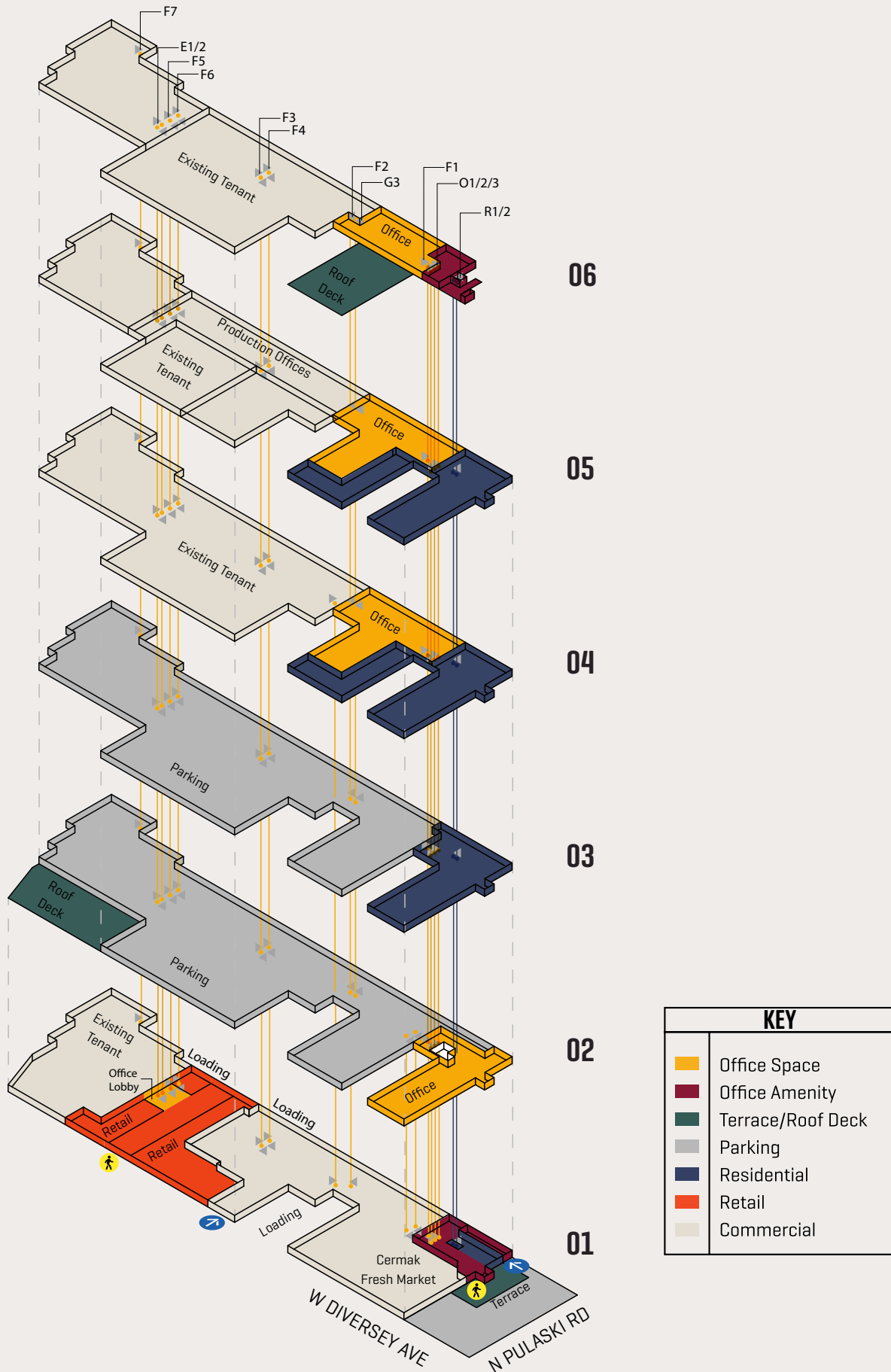
# THE FIELDS

OFFICE AVAILABILITIES

KNICKPOINT  
VENTURES



# AVAILABLE SPACE OFFERS FLEXIBILITY AND OPPORTUNITY TO BUSINESSES OF ALL TYPES.



KEY	
<span style="display:inline-block; width:15px; height:15px; background-color:yellow; border:1px solid black;"></span>	Office Space
<span style="display:inline-block; width:15px; height:15px; background-color:maroon; border:1px solid black;"></span>	Office Amenity
<span style="display:inline-block; width:15px; height:15px; background-color:darkgreen; border:1px solid black;"></span>	Terrace/Roof Deck
<span style="display:inline-block; width:15px; height:15px; background-color:grey; border:1px solid black;"></span>	Parking
<span style="display:inline-block; width:15px; height:15px; background-color:darkblue; border:1px solid black;"></span>	Residential
<span style="display:inline-block; width:15px; height:15px; background-color:orange; border:1px solid black;"></span>	Retail
<span style="display:inline-block; width:15px; height:15px; background-color:lightbeige; border:1px solid black;"></span>	Commercial

# Available Office Space

## AVAILABILITY:

Suite 200A - 27,238 RSF  
Suite 400B - 33,454 RSF  
Suite 500B - 33,448 RSF  
Suite 600B - 19,435 RSF

## RENTABLE OFFICE AREA:

113,575 RSF

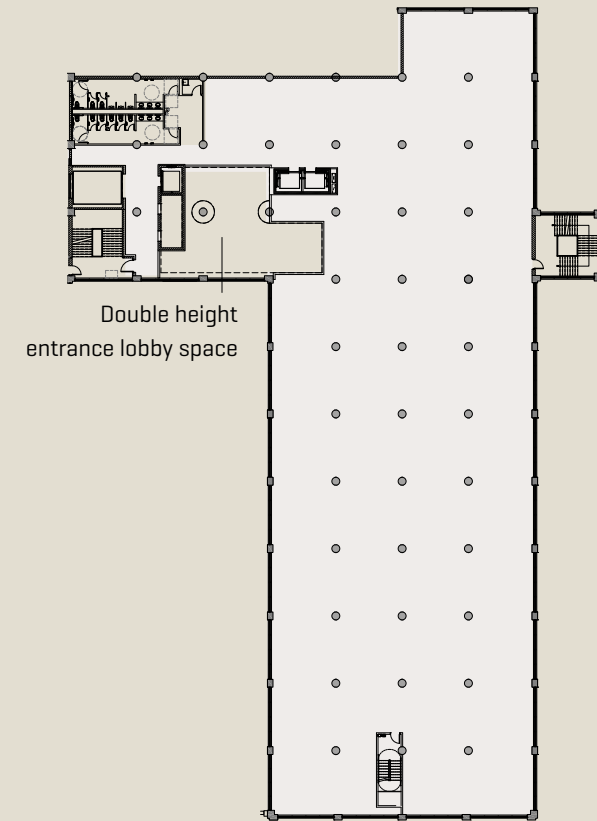
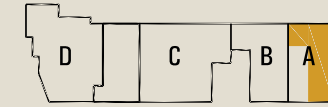
## CONTIGUOUS SPACE AVAILABLE:

Up to 86,337 RSF

## PRIVATE ENTRANCE OPPORTUNITIES

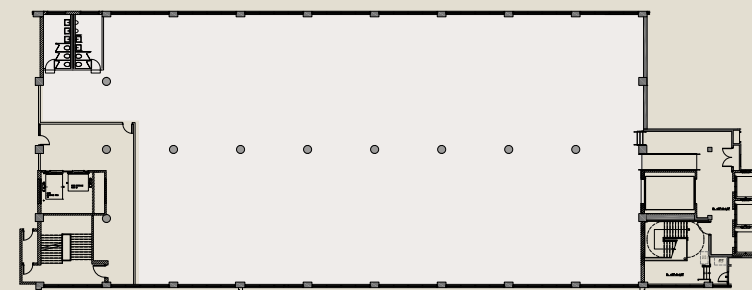
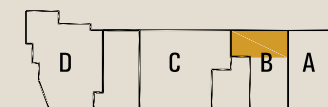
SUITE 200A

RSF:27,238 SF



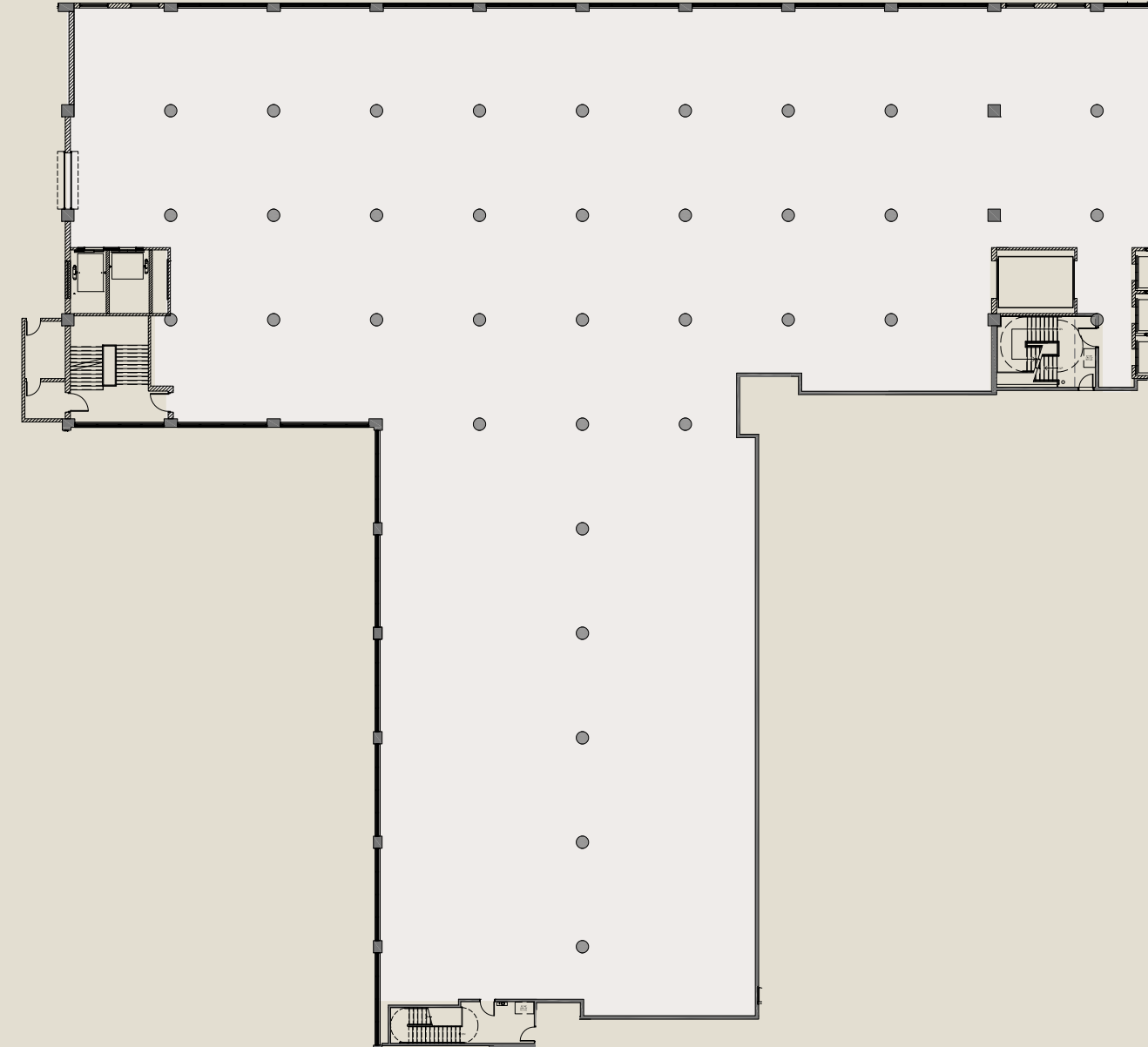
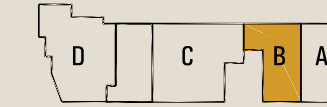
SUITE 600B

RSF:19,435 SF



SUITE 500B

RSF:33,448 SF



Suite 400B is a mirror of this suite one level below







# Learn More About The Fields

**PATRICK RUSSO**

[patrick.russo@streamrealty.com](mailto:patrick.russo@streamrealty.com)

**ARI TOPPER**

[ARI@BAUMREALTY.COM](mailto:ARI@BAUMREALTY.COM)

**KATIE HULL**

[katie.hull@streamrealty.com](mailto:katie.hull@streamrealty.com)

[TheFieldsChicago.com](http://TheFieldsChicago.com)