



SPEAK-EASY SPACE FOR LEASE  
SELLING LOWER LEVEL LOUNGE

70 LAFAYETTE  
STREET

Northwest Corner of Franklin Street

 Weisman NYC  
COMMERCIAL REAL ESTATE SERVICES

# TriBeCa Art District

## Lower Level Ideal for Bar / Lounge

Lower Level– 2,000 SF

Ceiling Heights

8-Feet

Term – Negotiable

Possession - Immediate

- DEDICATED ENTRANCE TO LOWER LEVEL

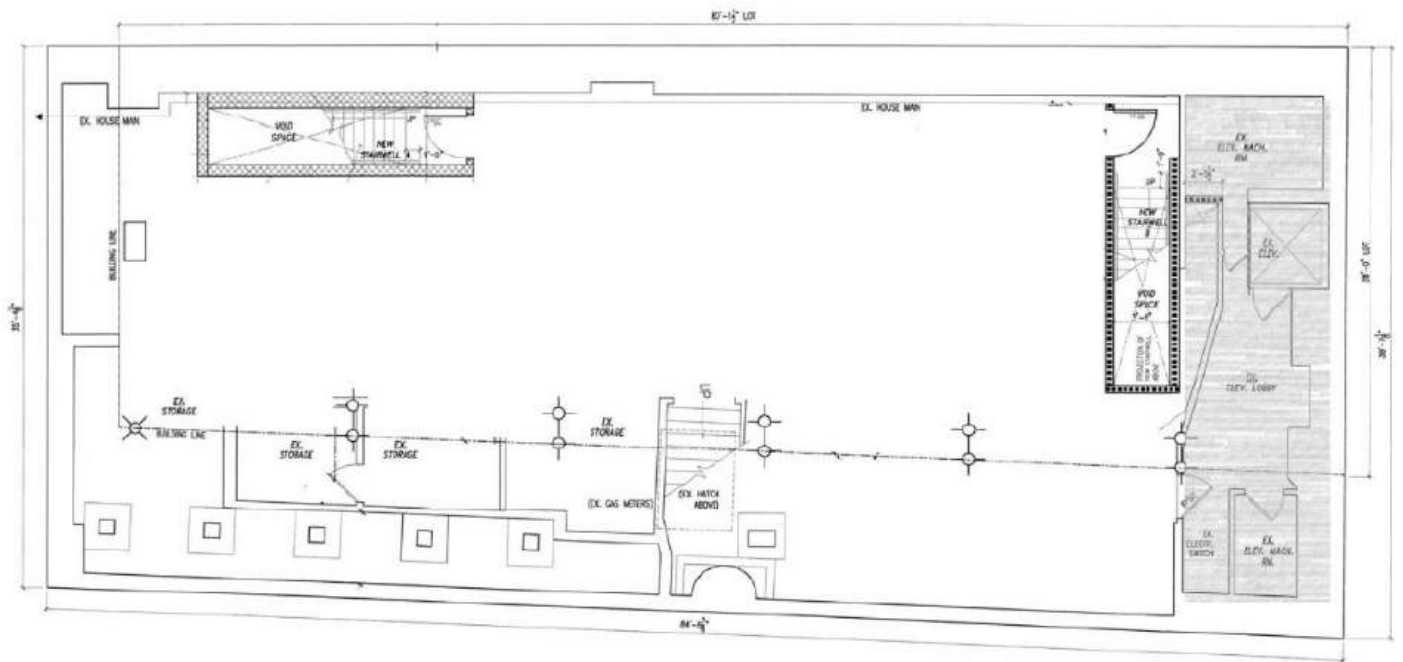
- LEGENDARY DOWNTOWN AREA

- TRIBECA ART GALLERY DISTRICT PROXIMITY

- USE GROUP 6



# Selling Basement Rental Plan



70 LAFAYETTE  
STREET

Please Contact:  
Peter Weisman  
212.300.3077  
[peter@weismannyc.com](mailto:peter@weismannyc.com)

 **Weisman NYC**  
COMMERCIAL REAL ESTATE SERVICES