



FOR SALE

Asking Price:

\$750,000

Contact us:

Mason Wood

Brokerage | Arkansas
+1 479 409 0409
mason.wood@ar.colliers.com

Alan W. Cole, CCIM

Principal & Executive VP
+1 479 644 5849
alan.cole@ar.colliers.com



Accelerating success.

3503 S 55th Street, Suite 200
Rogers, AR 72758
+1 479 636 9000
colliers.com/arkansas

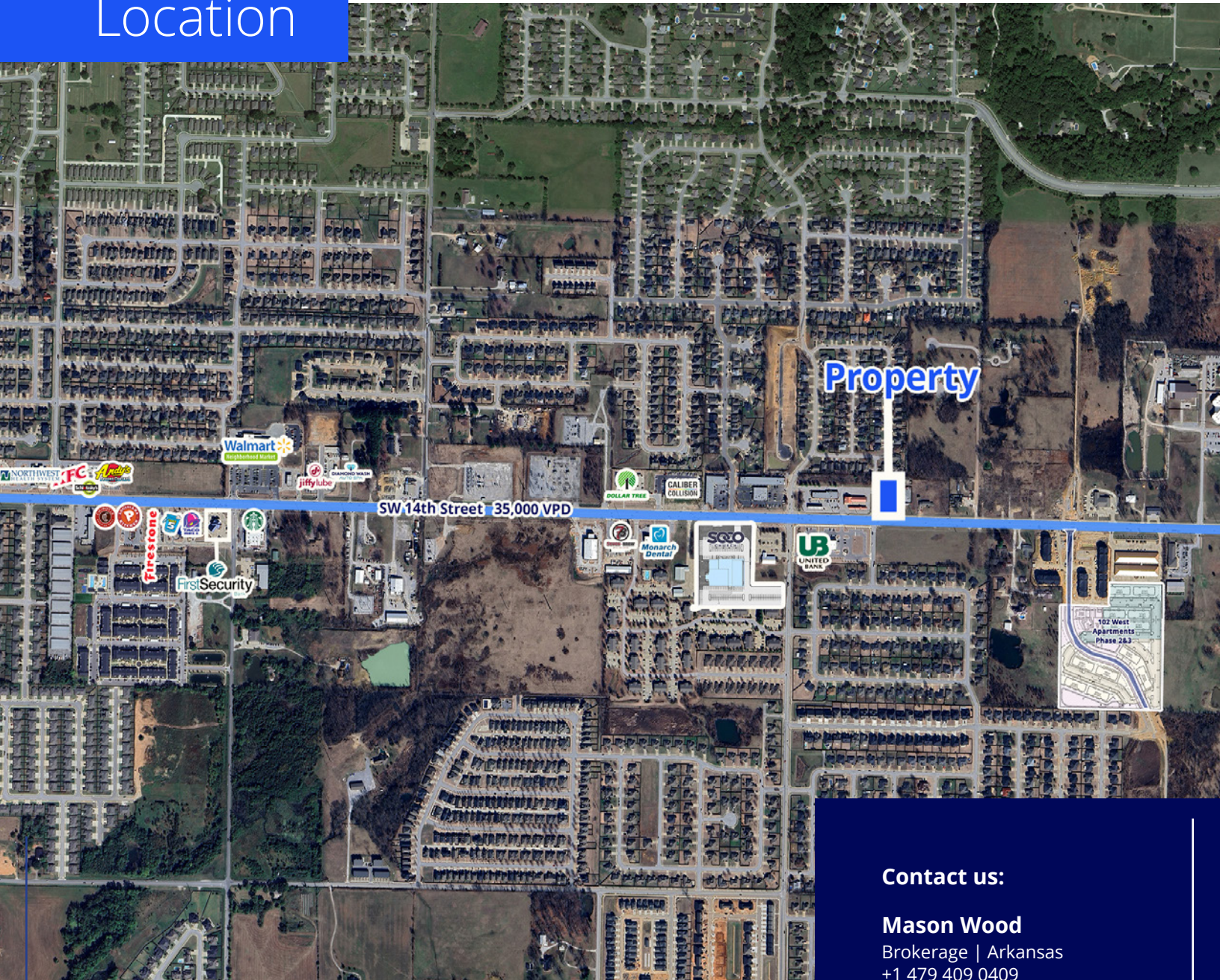
2310 SW 14th St Bentonville, Arkansas

Property Amenities

- Flexible Opportunity: Ground Lease or Build-to-Suit on adjacent 0.72 Acres | Zoned C-2
- Prime location along SW 14th Street (Hwy 102) – a high-traffic thoroughfare and major commercial corridor connecting Bentonville and Centerton
- Nearby national tenants include Chipotle, Freddy's, 7 Brew, McDonald's, Walmart Neighborhood Market, and Starbucks
- Ideal for QSR, medical, financial, or service-oriented retail users
- Located within minutes of downtown Bentonville, Walmart HQ, and Northwest Arkansas National Airport



Location



Contact us:

Mason Wood

Brokerage | Arkansas
+1 479 409 0409
mason.wood@ar.colliers.com

Alan W. Cole, CCIM

Principal & Executive VP
+1 479 644 5849
alan.cole@ar.colliers.com



Accelerating success.

Demographics

	1 Mile	3 Mile	5 Mile
Population (2024)	8,382	57,821	101,510
Projected Population (2029)	8,834	63,207	111,508
Average HH Income (2024)	\$129,611	\$135,502	\$135,177
Proj. Average HH Income (2029)	\$141,250	\$151,924	\$151,218
Households (2024)	3,168	21,404	37,676

Copyright © 2021 Colliers International.

Information herein has been obtained from sources deemed reliable, however its accuracy cannot be guaranteed. The user is required to conduct their own due diligence and verification.

3503 S 55th Street, Suite 200
Rogers, AR 72758
+1 479 636 9000
colliers.com/arkansas