



SAN FRANCISCO, CA 94124 USA

2190 Cesar Chavez

10,500 SF OF TOTAL SPACE

Mostly open-span warehouse | on-site parking
Multiple docks | office space

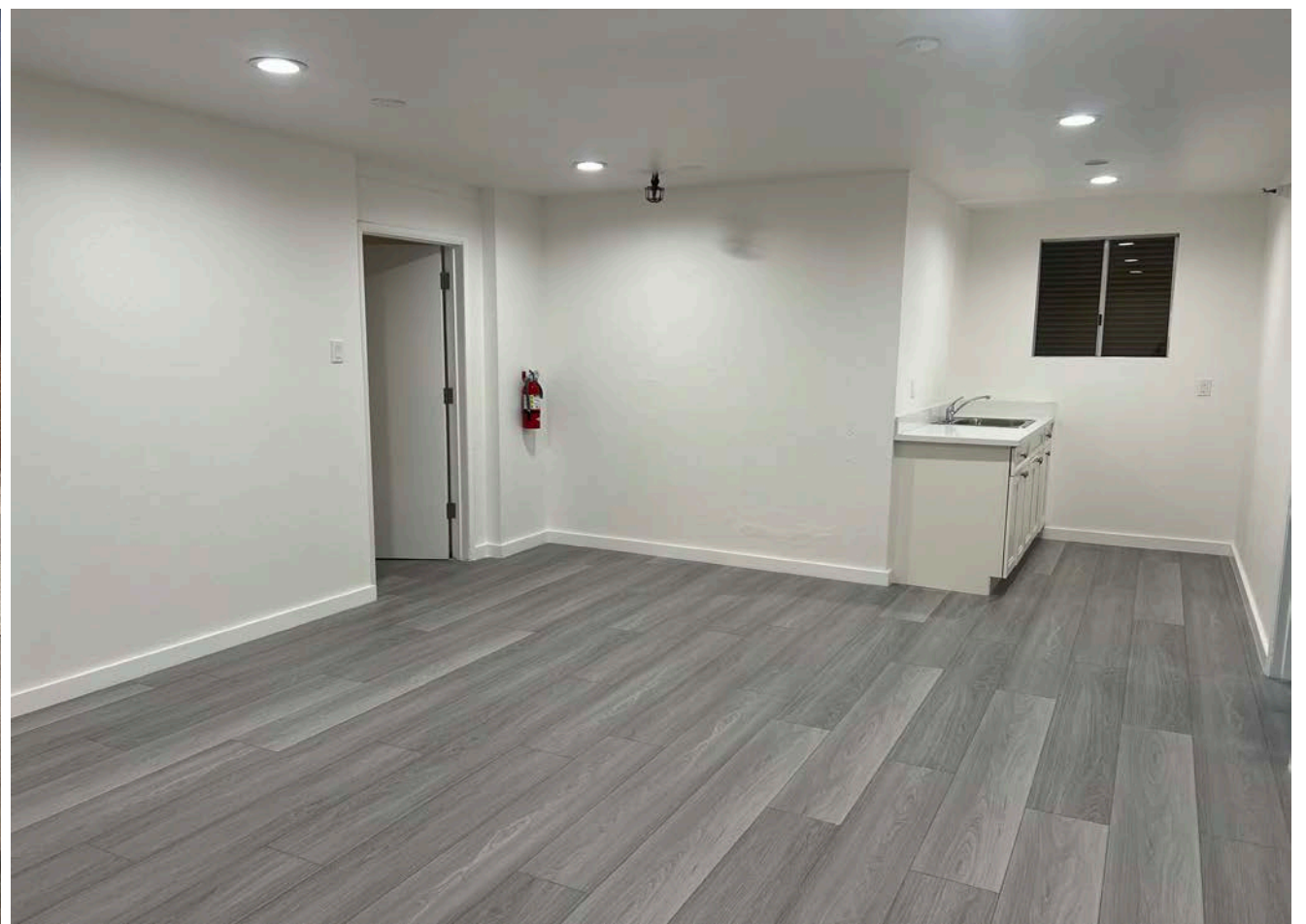
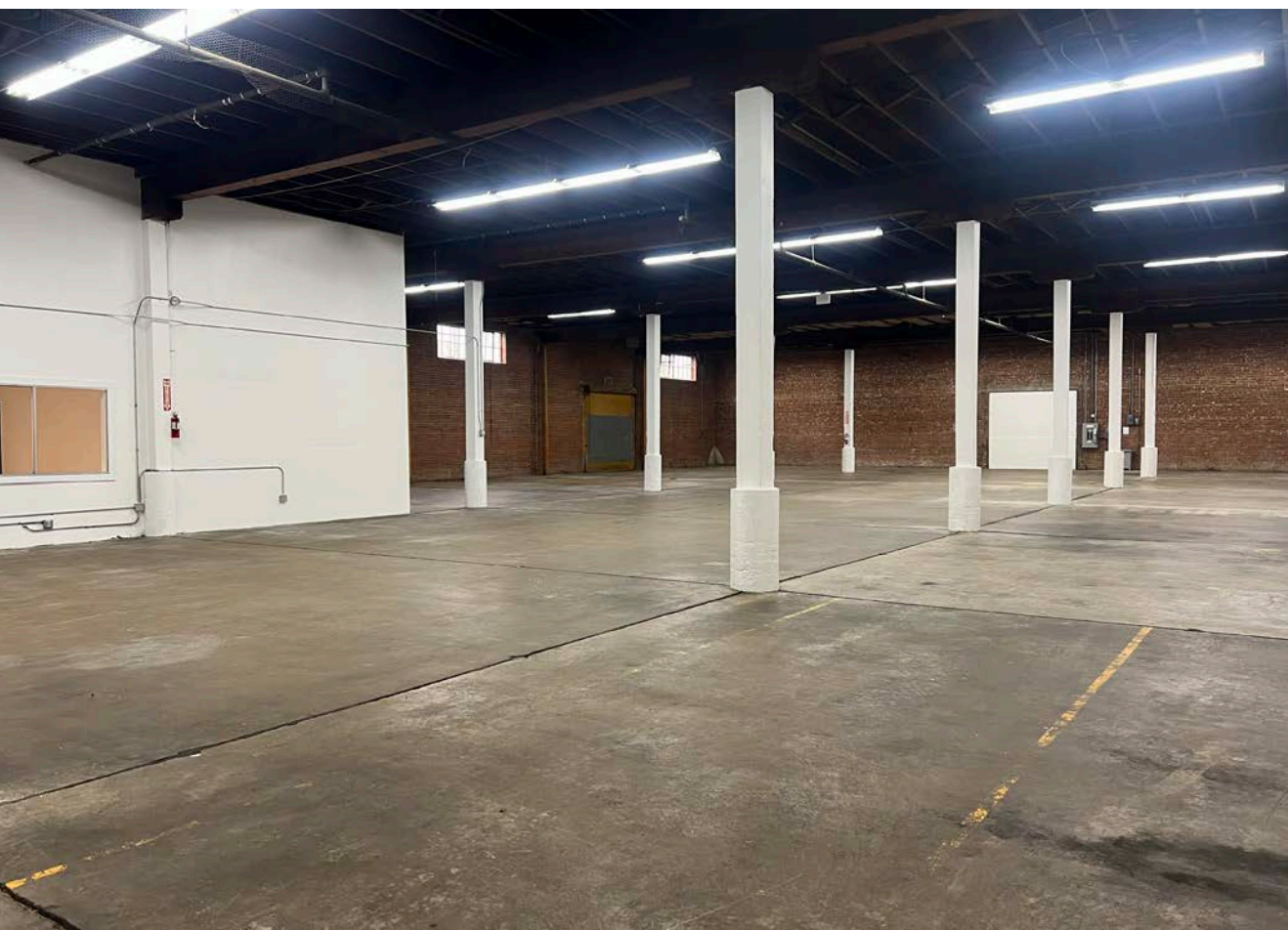
2190 Cesar Chavez

| PROPERTY OVERVIEW



- 10,500 \pm SF of total space
- 1,500 \pm SF of office
- 9,000 \pm SF of mostly open-span warehouse
- One (1) drive-in door
- Two (2) docks
- On-site private parking
- \$1.75 PSF, IG/ month

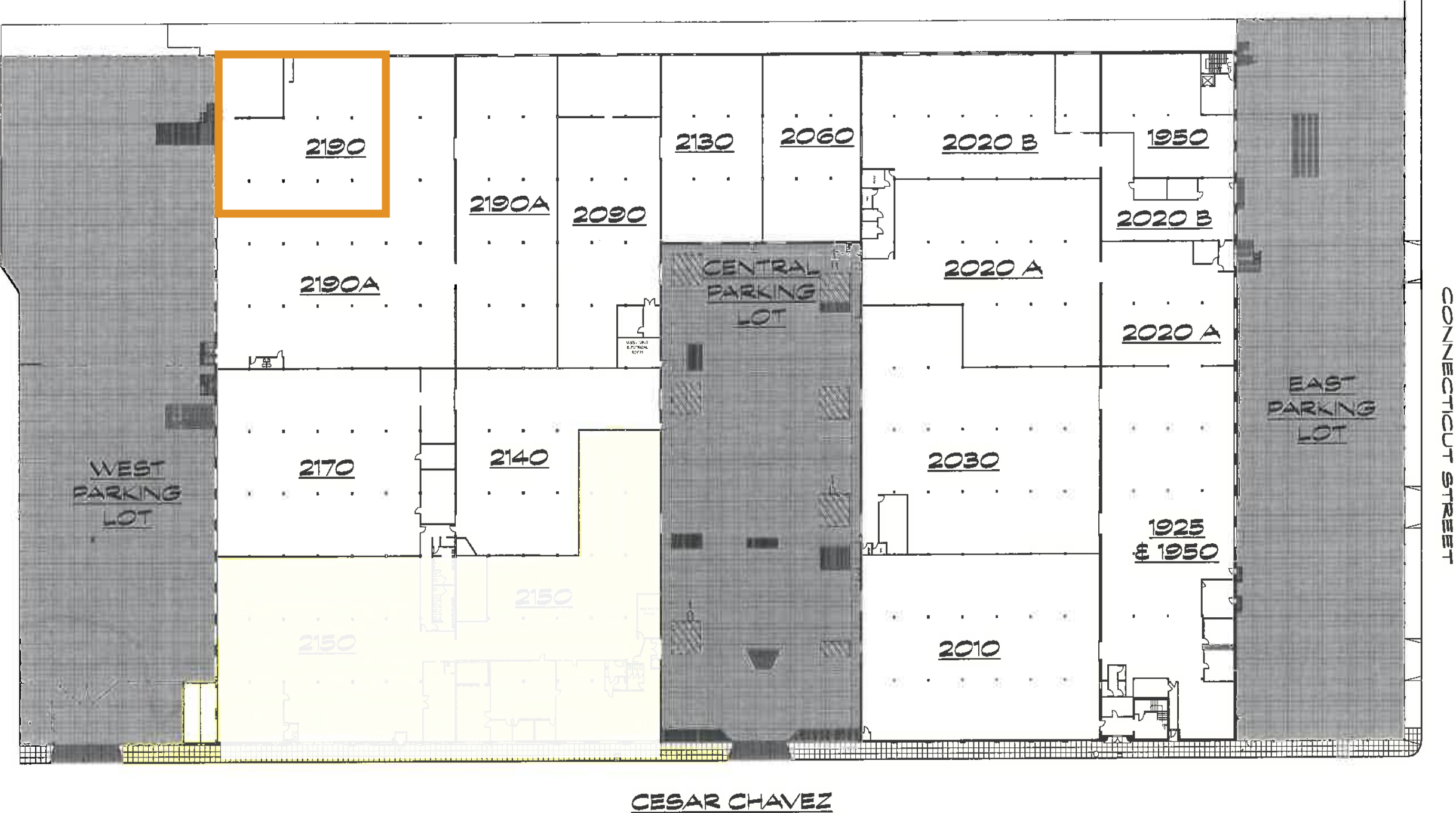




Exterior Yard / Parking



FLOORPLAN
| 2190 Cesar Chavez



2190 Cesar Chavez

SCOTT MASON

President

Email: scott@calcosf.com

Cell: 415.215.1937

DRE #01036610

PIONEERING REAL ESTATE SOLUTIONS WITH PROVEN EXPERTISE

Calco Commercial, founded in 2011 by Scott Mason, brings over 35 years of experience and 2,500+ transactions, totaling over \$2.2 billion in sales and leases. Specializing in leasing and sales of commercial real estate in the San Francisco Bay Area and nationwide, we consistently rank as a top-producing firm. With deep knowledge of the Bay Area market, our team offers clients over three decades of expertise and exceptional customer service, providing the tools and guidance to navigate the ever-changing commercial real estate landscape.