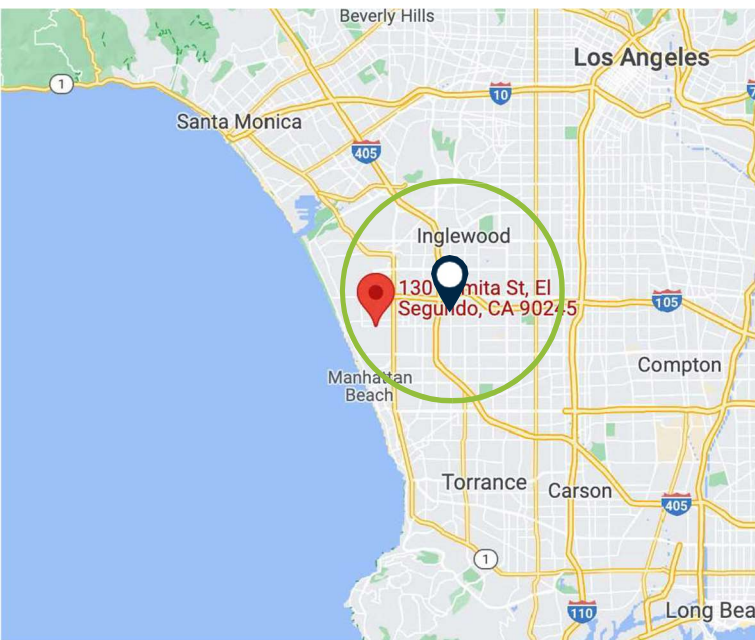


# Creative Office-Flex Building for Lease

130 Lomita Street

El Segundo CA, 90245



## Contact

Andrew Mager, SIOR  
Senior Vice President  
O: 310.643.5288 IM: 843.514.6213  
arnager@fischerere.com

Jeff Kernochan, SIOR  
Managing Director  
O: 310.643.6313 | M: 310.466.9739  
jeffk@fischercre.com

**Property** Creative Office-Flex Building

**Type Year** 2007

**Built Building** 4,310 SF

**SF Rate** \$3.48/SF Modified Gross  
(\$15,000/mo.)

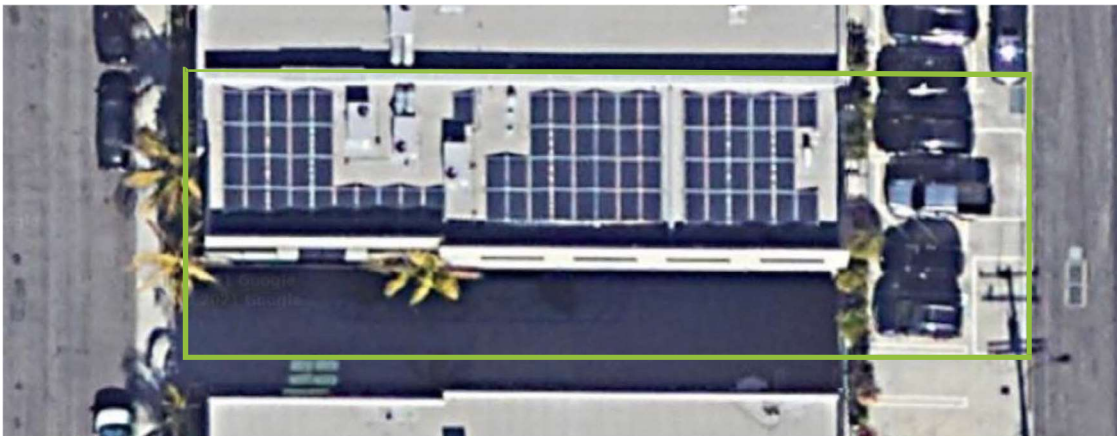
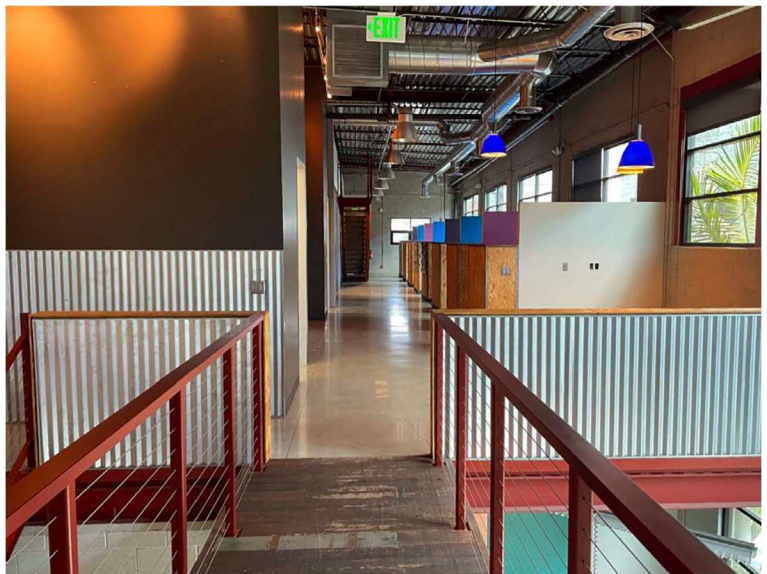
**Parking** 11 Spaces (Free)

**Amenities  
& Features** High Image Exterior and  
Interior Spacious Office Suites  
Built-in Workstations  
Polished Concrete Floors  
Openable Windows  
Solar Panels for Reduced  
OPEX Air Conditioning  
Security System

Mezzanine



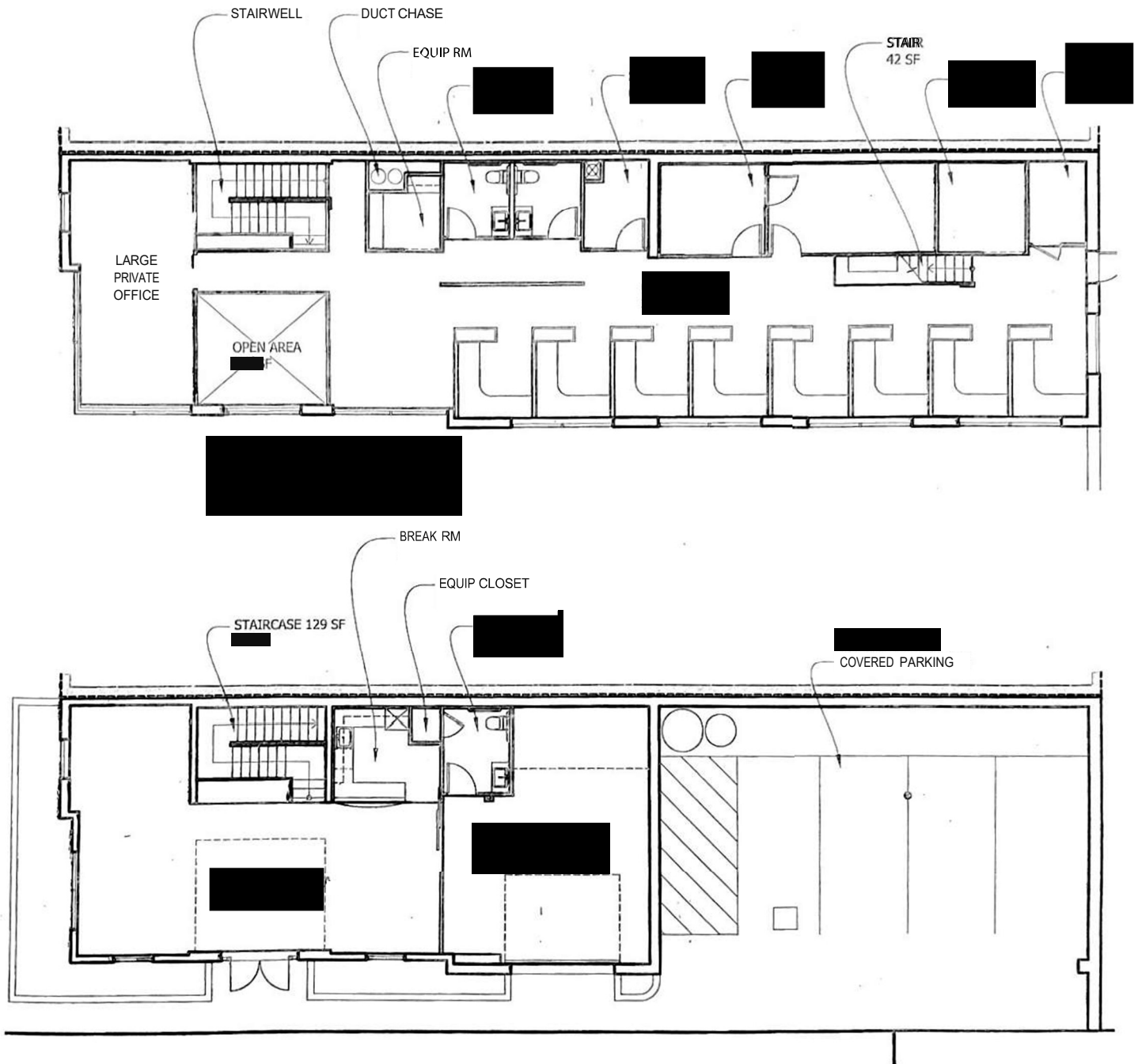
# Creative Office-Flex Building for Lease



# Creative Office-Flex Building for Lease

## MASTER FLOOR PLAN

4,310 SF



## Contact

Andrew Mager, SIOR  
Senior Vice President

O: 310.643.5288 IM: 843.514.6213  
amager@fischercre.com

Jeff Kernochan, SIOR  
Managing Director

O: 310.643.6313 IM: 310.466.9739  
jeffk@fischercre.com

Information concerning the property described herein has been obtained from other sources other than Fischer and we make no representations or warranties, express or implied, as to the accuracy or completeness of such information. Any and all references to age, square footage, and any other specific information are approximate and disclosed to the best of knowledge. The recipient bears the sole responsibility for verification of the accuracy of the information contained herein and bears all risk for any inaccuracies. Fischer shall have no liability or responsibility to any party for any loss or damage claimed to have arisen from reliance by any party on the information contained herein.