

950

S WANAMAKER AVE ONTARIO, CA

**FREESTANDING 23,700 SF
WAREHOUSE FOR LEASE**

**WITHIN A PRE-APPROVED
FOREIGN TRADE ZONE**

CBRE



Freestanding 23,700 SF
Warehouse on 1.60 Acres



72 Employee Parking Stalls



Within a Pre-Approved
Foreign Trade Zone



Zoning – Light Industrial in
California Commerce Center



Private Secured Yard
With Motorized Gate



Immediate Access To I-15,
I-10 And Sr-60 Freeways



3 Dock High &
1 Grade Level Loading Door



±6,200 SF Two-Story
Office Newly Renovated |
Multiple Show Rooms



21' Minimum Clearance



In-Place Racking



400 Amp
277/480 Volt Power



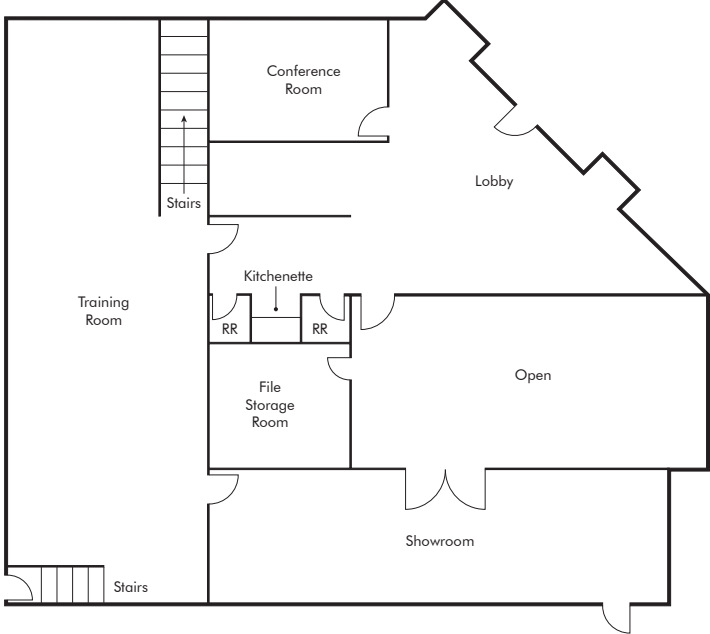
0.43/2,000 Gpm/ SQ.FT.
Sprinkler Calc



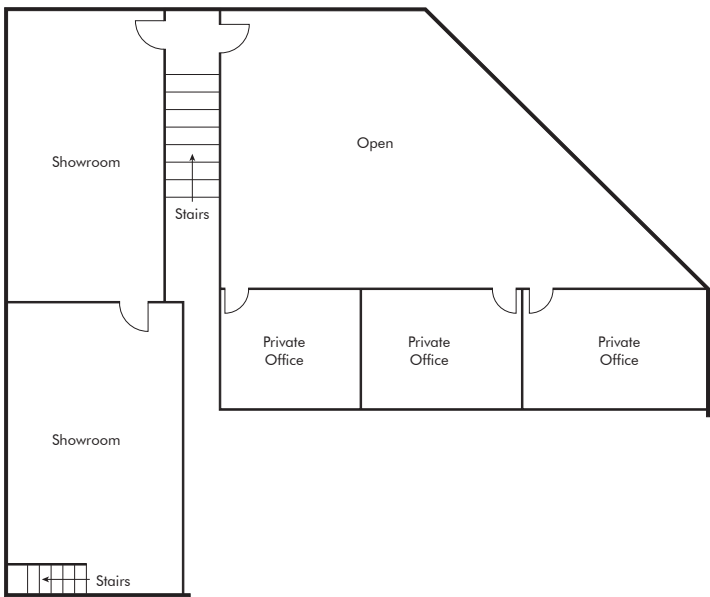
SITE PLAN



OFFICE FLOOR 1



OFFICE FLOOR 2



FREEWAY ACCESS MAP





S WANAMAKER AVE ONTARIO, CA

FOR MORE INFORMATION, PLEASE CONTACT:

JUSTIN KUEHN

First Vice President

+1 949 370 5931

Lic. 01966182

justin.kuehn@cbre.com

RICHARD LEE

Senior Vice President

+1 909 418 2010

Lic. 01757870

richard.lee@cbre.com

NICHOLAS CHANG

Senior Vice President

+1 949 375 2310

Lic. 01344844

nicholas.chang@cbre.com

SIONE FUA

Vice President

+1 909 418 2007

Lic. 02006432

sione.fua@cbre.com

CBRE

© 2025 CBRE, Inc. All rights reserved. This information has been obtained from sources believed reliable, but has not been verified for accuracy or completeness. You should conduct a careful, independent investigation of the property and verify all information. Any reliance on this information is solely at your own risk. CBRE and the CBRE logo are service marks of CBRE, Inc. All other marks displayed on this document are the property of their respective owners. Photos herein are the property of their respective owners. Use of these images without the express written consent of the owner is prohibited.