

# WAREHOUSE CONDOS

## I-80 WEST INTERSTATE PARK

### 800 & 810 INTERSTATE PARKWAY

WAUKEE, IA 50263

# FOR SALE



## PROPERTY FEATURES

- ◆ Precast Construction Warehouse Condos For Sale (New Construction)
- ◆ Bay Sizes Range From:
  - **West Bldg (810):** Two Bays Left!  
1,920 to 3,840 SF Available  
Price Range \$268,800 to \$537,600
  - **East Bldg (800):** 1,920 to 13,440 SF  
Price Range \$268,800 to \$1,881,600
- ◆ Typical Bay Spacing 24' Width (Center to Center of Demising Wall) by 80' Length
- ◆ Located in the New I-80 West Interstate Park Just South of I-80
- ◆ All Utilities are Separately Metered

## ◆ Each Bay Includes:

- 10" Precast Insulated Walls
- 6" Concrete Interior Reinforced Floors
- 12' x 14' Insulated Overhead Door with Opener
- 18' Clear Height (20' to Deck)
- Reznor Heater
- Floor Drain
- Fire Sprinkler System
- 200 Amp/3 Phase 120/208V Electric
- 3 LED Highbay Fixtures
- 3/4" Conduit for Fiber/Communication/Fiber
- Steel Stud, 1 HR Fire Rating Demising Walls
- Restroom Stack with Water Line
- Fire Alarm System with Life Safety Devices

## CONTACT US

**REID TAMISIEA**

Agent



515.721.9115 (c)



reid@cdmres.com



**CDM**<sup>®</sup>  
**REAL ESTATE**  
— SERVICES —

BUY ◆ SELL ◆ LEASE ◆ DEVELOP ◆ MANAGE ◆ CONSULT

3035 99th Street, Urbandale, Iowa 50322 | [www.cdmres.com](http://www.cdmres.com)



# WAREHOUSE CONDOS

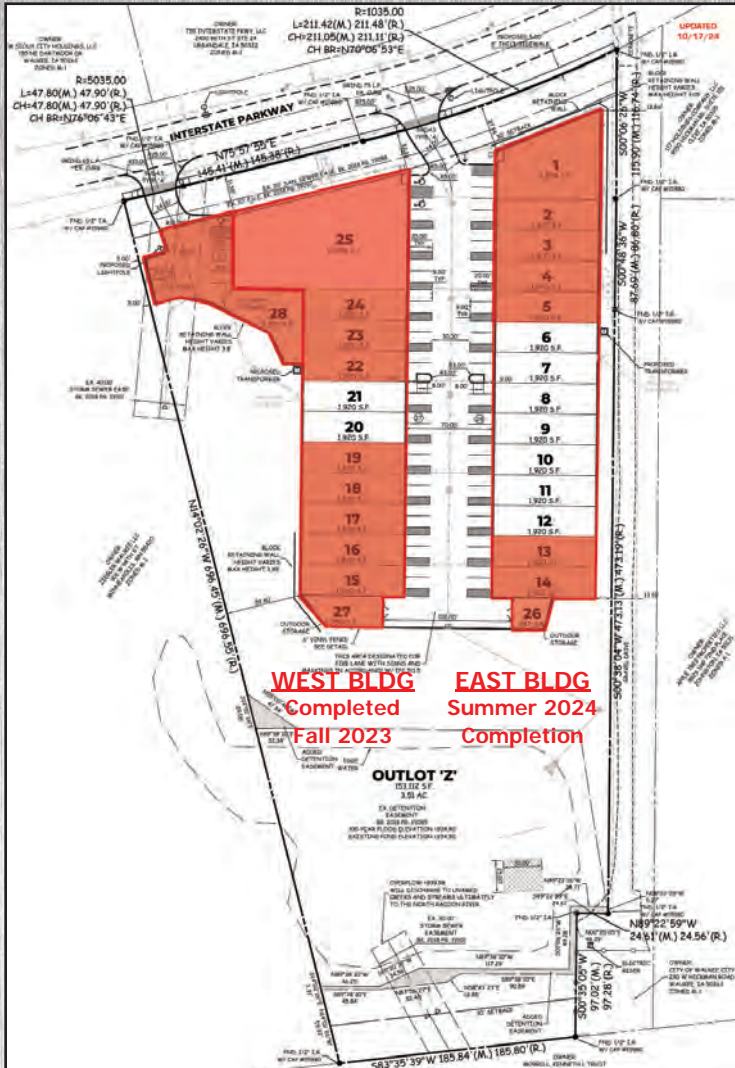
## I-80 WEST INTERSTATE PARK

### 800 & 810 INTERSTATE PARKWAY

#### WAUKEE, IOWA 50263

# FOR SALE

## WEST BUILDING



BAY	ACRES	PRICE	COMMENTS
<b>A</b> (LOT 25 & 28)	<b>SOLD</b>	<b>\$ SOLD</b>	Includes 4 Overhead Doors, Separate Parking Lot and Lot 28 Outside Storage
<b>B</b> (LOT 24)	<b>SOLD</b>	<b>\$ SOLD</b>	Includes 1 Overhead Door
<b>C</b> (LOT 23)	<b>SOLD</b>	<b>\$ SOLD</b>	Includes 1 Overhead Door
<b>D</b> (LOT 22)	<b>SOLD</b>	<b>\$ SOLD</b>	Includes 1 Overhead Door
<b>E</b> (LOT 21)	1,920 SF	\$268,800	Includes 1 Overhead Door
<b>F</b> (LOT 20)	1,920 SF	\$268,800	Includes 1 Overhead Door
<b>G</b> (LOT 19)	<b>SOLD</b>	<b>\$ SOLD</b>	Includes 1 Overhead Door
<b>H</b> (LOT 18)	<b>SOLD</b>	<b>\$ SOLD</b>	Includes 1 Overhead Door
<b>I</b> (LOT 17)	<b>SOLD</b>	<b>\$ SOLD</b>	Includes 1 Overhead Door
<b>J</b> (LOT 16)	<b>SOLD</b>	<b>\$ SOLD</b>	Includes 1 Overhead Door
<b>K</b> (LOT 15)	<b>SOLD</b>	<b>\$ SOLD</b>	Includes 1 Overhead Door
(LOT 27)	<b>SOLD</b>	<b>\$ SOLD</b>	Outside Storage

\* Contiguous up to 3,840 SF

## EAST BUILDING

BAY	ACRES	PRICE	COMMENTS
<b>L</b> (LOT 1)	<b>SOLD</b>	<b>\$ SOLD</b>	Includes 1 Overhead Door
<b>M</b> (LOT 2)	<b>SOLD</b>	<b>\$ SOLD</b>	Includes 1 Overhead Door
<b>N</b> (LOT 3)	<b>SOLD</b>	<b>\$ SOLD</b>	Includes 1 Overhead Door
<b>O</b> (LOT 4)	<b>SOLD</b>	<b>\$ SOLD</b>	Includes 1 Overhead Door
<b>P</b> (LOT 5)	<b>SOLD</b>	<b>\$ SOLD</b>	Includes 1 Overhead Door
<b>Q</b> (LOT 6)	1,920 SF	\$268,800	Includes 1 Overhead Door
<b>R</b> (LOT 7)	1,920 SF	\$268,800	Includes 1 Overhead Door
<b>S</b> (LOT 8)	1,920 SF	\$268,800	Includes 1 Overhead Door
<b>T</b> (LOT 9)	1,920 SF	\$268,800	Includes 1 Overhead Door
<b>U</b> (LOT 10)	1,920 SF	\$268,800	Includes 1 Overhead Door
<b>V</b> (LOT 11)	1,920 SF	\$268,800	Includes 1 Overhead Door
<b>W</b> (LOT 12)	1,920 SF	\$268,800	Includes 1 Overhead Door
<b>X</b> (LOT 13)	<b>SOLD</b>	<b>\$ SOLD</b>	Includes 1 Overhead Door
<b>Y</b> (LOT 14)	<b>SOLD</b>	<b>\$ SOLD</b>	Includes 1 Overhead Door

\* Contiguous up to 13,440 SF

PAGE 2



**CDM**<sup>®</sup>  
REAL ESTATE  
SERVICES

3035 99th Street  
Urbandale, Iowa 50322  
515.901.3403

[www.cdmres.com](http://www.cdmres.com)

Updated 10/17/2024

2024 Platinum Real Estate, LLC d|b|a CDM Real Estate Services. We obtained the information herein from the Property Owner or other sources we believe to be reliable, however it is not verified or warranted to its accuracy and may change or be updated without notice. Property Owner | Seller | Landlord makes no representation as to the environmental condition of the property and recommends purchaser's or tenant's independent investigation. Images herein are property of the Property Owner or Listing Agent. Use of these images are restricted without the proper approval from the Property Owner and/or Listing Agent.



