



Property Description

9.2 acre site encompasses the SW/C of SW 4th Street and Telephone Road in Moore, Oklahoma. Site has approximately 561 feet of frontage on SW 4th Street and 277 feet of frontage on Telephone Road. Site is conveniently located less than 1/2 mile from Interstate 35, with traffic counts over 22,000 vehicles per day north/southbound and over 14,500 east/westbound.

Property Highlights

- LAND AVAILABLE
- (+/-) 9.2 Acres
- Land Lease or Build to Suit
- Convenient Interstate Access

Offering Summary

Lease Rate:	Negotiable
Available SF:	400,752 SF
Lot Size:	9.2 Acres

Demographics	1 Mile	3 Miles	5 Miles
Total Households	4,501	27,239	51,603
Total Population	11,950	71,506	135,728
Average HH Income	\$49,776	\$64,056	\$66,739

RICK PRITCHETT, CCIM

405.605.0825

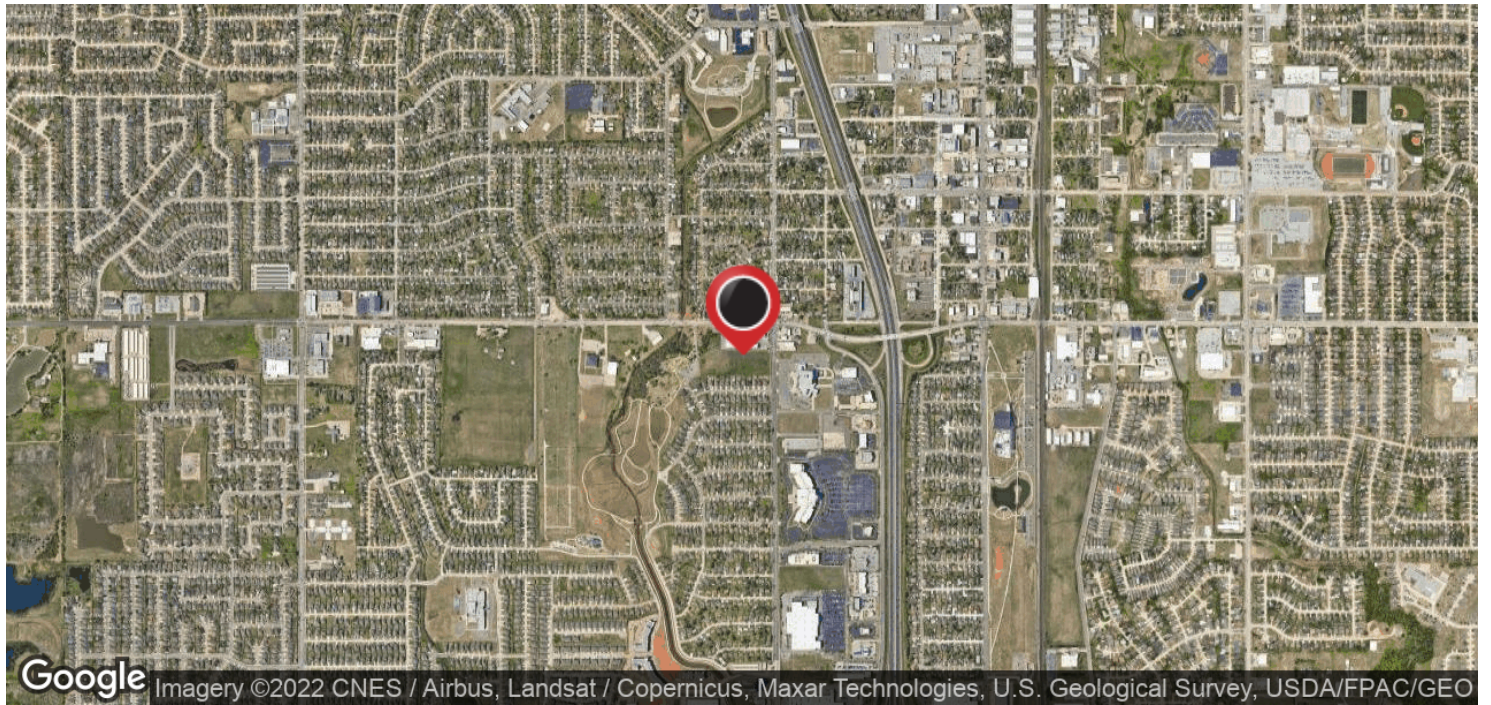
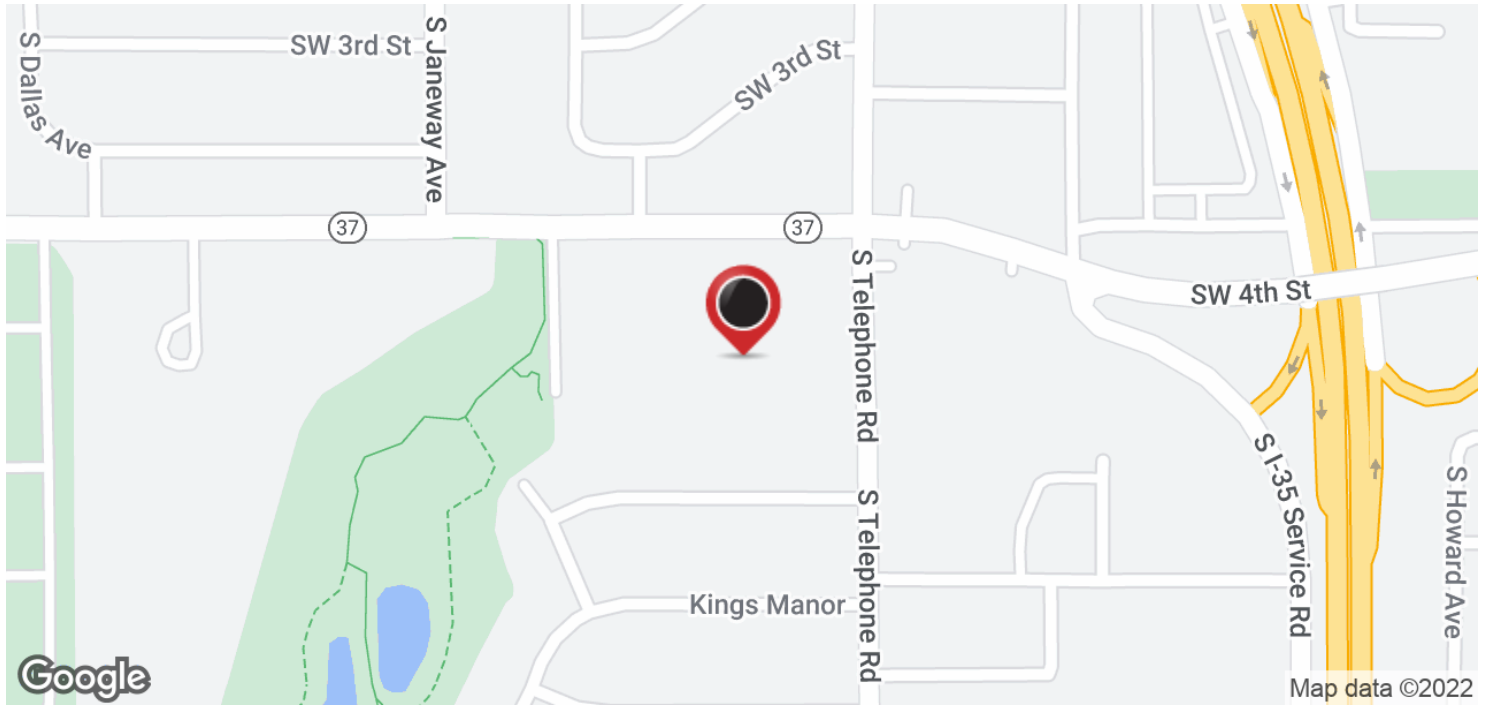
rick@precorruffin.com



For Lease

SW 4TH & TELEPHONE ROAD

SW 4TH & TELEPHONE ROAD



RICK PRITCHETT, CCIM

405.605.0825

rick@precorruffin.com



PRECORRUFFIN

PRECOR RUFFIN | 825 N. BROADWAY, SUITE 300, OKLAHOMA CITY, OK 73102 | 405.605.0825 | PRECORRUFFIN.COM

The information above has been obtained from sources believed reliable. While we do not doubt its accuracy, PrecorRuffin, LLC has not verified it and makes no guarantee, warranty or representation about it. It is your responsibility to independently confirm its accuracy.