

# JULIE MARIE BUSINESS CENTER

21414 JULIE MARIE LANE, KATY, TX 77449



WEST HOUSTON / KATY SUBMARKET



GREAT ACCESS TO I-10 & HIGHWAY-99



TENANT-CONTROLLED HVAC



10'X10' GRADE-LEVEL LOADING DOORS



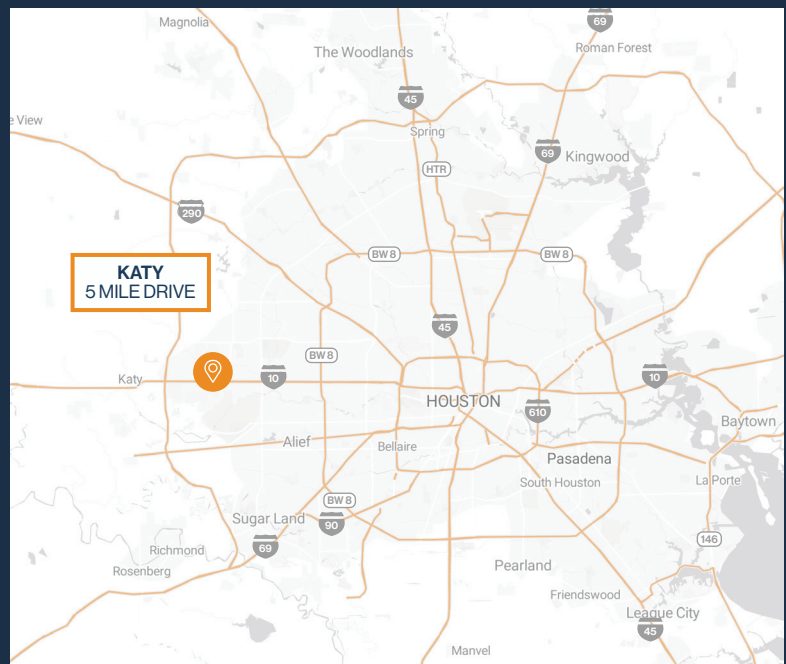
AMPLE TENANT PARKING



GLASS STOREFRONT & SHOWROOM-READY SPACES



1,000 SF SUITES AVAILABLE



**RYAN YOUNG**



281.584.3320



ryan.young@fort-companies.com



This information is deemed reliable, however, Fort makes no guarantee, warranties, or representations as to the completeness or accuracy thereof.

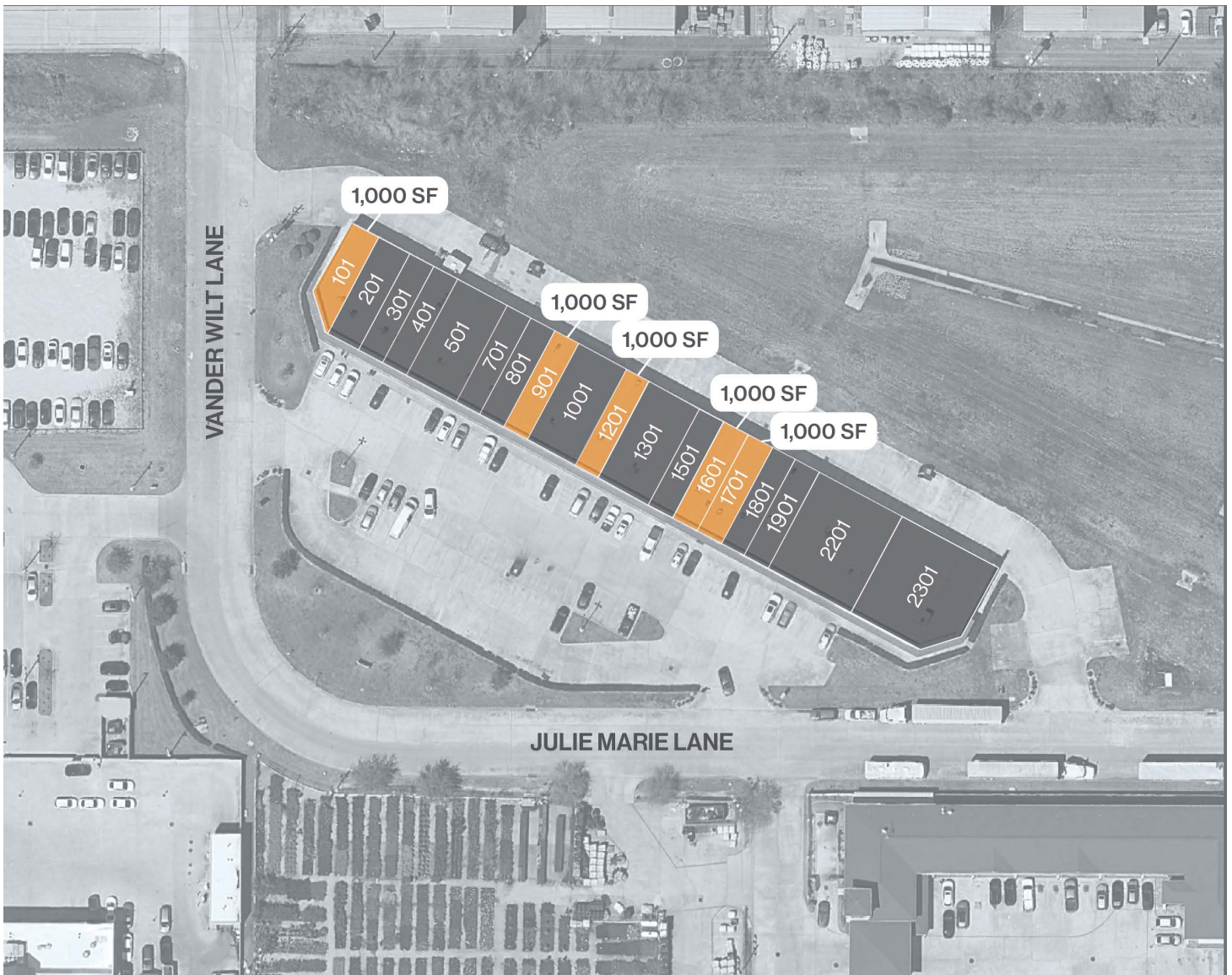


**FORT**  
LEASING

# JULIE MARIE BUSINESS CENTER

21414 JULIE MARIE LN  
HOUSTON, TEXAS 77449

## SITE PLAN



**RYAN YOUNG**  
281.584.3320  
ryoung@s2cp.com

This information is deemed reliable, however, Fort makes no guarantee, warranties, or representations as to the completeness or accuracy thereof.



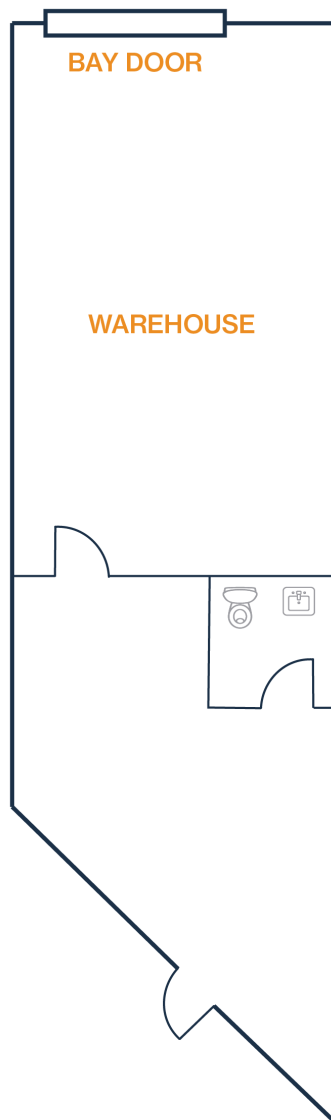
**FORT**  
LEASING

# JULIE MARIE BUSINESS CENTER

21414 JULIE MARIE LN  
HOUSTON, TEXAS 77449

## UNIT 101 – 1,000 SF

- Glass Storefront
- (1) Grade Level Door
- 100% Climate-Controlled



**RYAN YOUNG**  
281.584.3320  
ryoung@s2cp.com

This information is deemed reliable, however, Fort makes no guarantee, warranties, or representations as to the completeness or accuracy thereof.



**FORT**  
LEASING

# JULIE MARIE BUSINESS CENTER

21414 JULIE MARIE LN  
HOUSTON, TEXAS 77449

## UNIT 901 – 1,000 SF

- Glass Storefront
- (1) Grade Level Door
- 100% Climate-Controlled



**RYAN YOUNG**  
281.584.3320  
ryoung@s2cp.com

This information is deemed reliable, however, Fort makes no guarantee, warranties, or representations as to the completeness or accuracy thereof.



**FORT**  
LEASING

# JULIE MARIE BUSINESS CENTER

21414 JULIE MARIE LN  
HOUSTON, TEXAS 77449

## UNIT 1201 – 1,000 SF

- Glass Storefront
- (1) Grade Level Door
- 100% Climate-Controlled





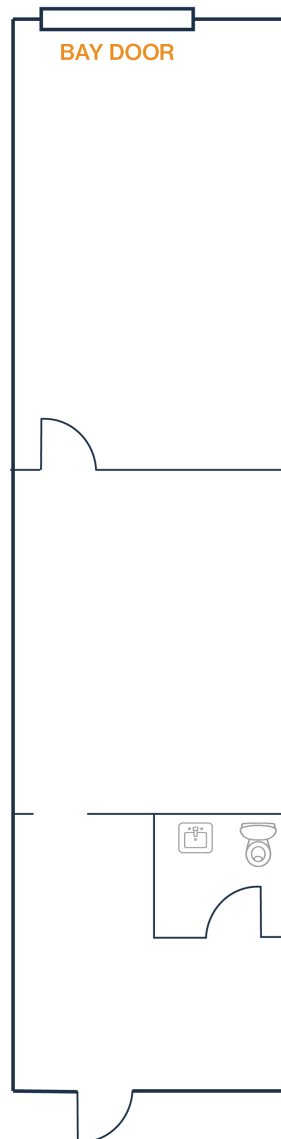
**FORT**  
LEASING

# JULIE MARIE BUSINESS CENTER

21414 JULIE MARIE LN  
HOUSTON, TEXAS 77449

## UNIT 1601 – 1,000 SF

- Glass Storefront
- (1) Grade Level Door
- 100% Climate-Controlled



**RYAN YOUNG**  
281.584.3320  
ryoung@s2cp.com

This information is deemed reliable,  
however, Fort makes no guarantee,  
warranties, or representations as to the  
completeness or accuracy thereof.



**FORT**  
LEASING

# JULIE MARIE BUSINESS CENTER

21414 JULIE MARIE LN  
HOUSTON, TEXAS 77449

## UNIT 1701 – 1,000 SF

- Glass Storefront
- (1) Grade Level Door
- 100% Climate-Controlled



**RYAN YOUNG**  
281.584.3320  
ryoung@s2cp.com

This information is deemed reliable, however, Fort makes no guarantee, warranties, or representations as to the completeness or accuracy thereof.