

# STONEWOOD CROSSING

5600 LEE BLVD, LEHIGH ACRES, FL 33971

FOR SALE/GROUND LEASE/BTS



**Kim Daugherty**  
Senior Advisor  
239.334.3040 Ext. 208  
Kim.Daugherty@TrinityCRE.com

**Eric Strom**  
Partner  
239.334.3040 Ext. 208  
Eric.Strom@TrinityCRE.com

**Ty Hensley**  
Partner  
239.334.3040 Ext. 208  
Ty.Hensley@TrinityCRE.com





### 2026 DEMOGRAPHICS

5600 LEE BLVD

	1 MILE	3 MILE	5 MILE
AVERAGE H.H INCOME	\$111,785	\$117,489	\$115,173
POPULATION	4,802	45,705	111,569
EMPLOYMENT DENSITY	3,082	8,388	27,494

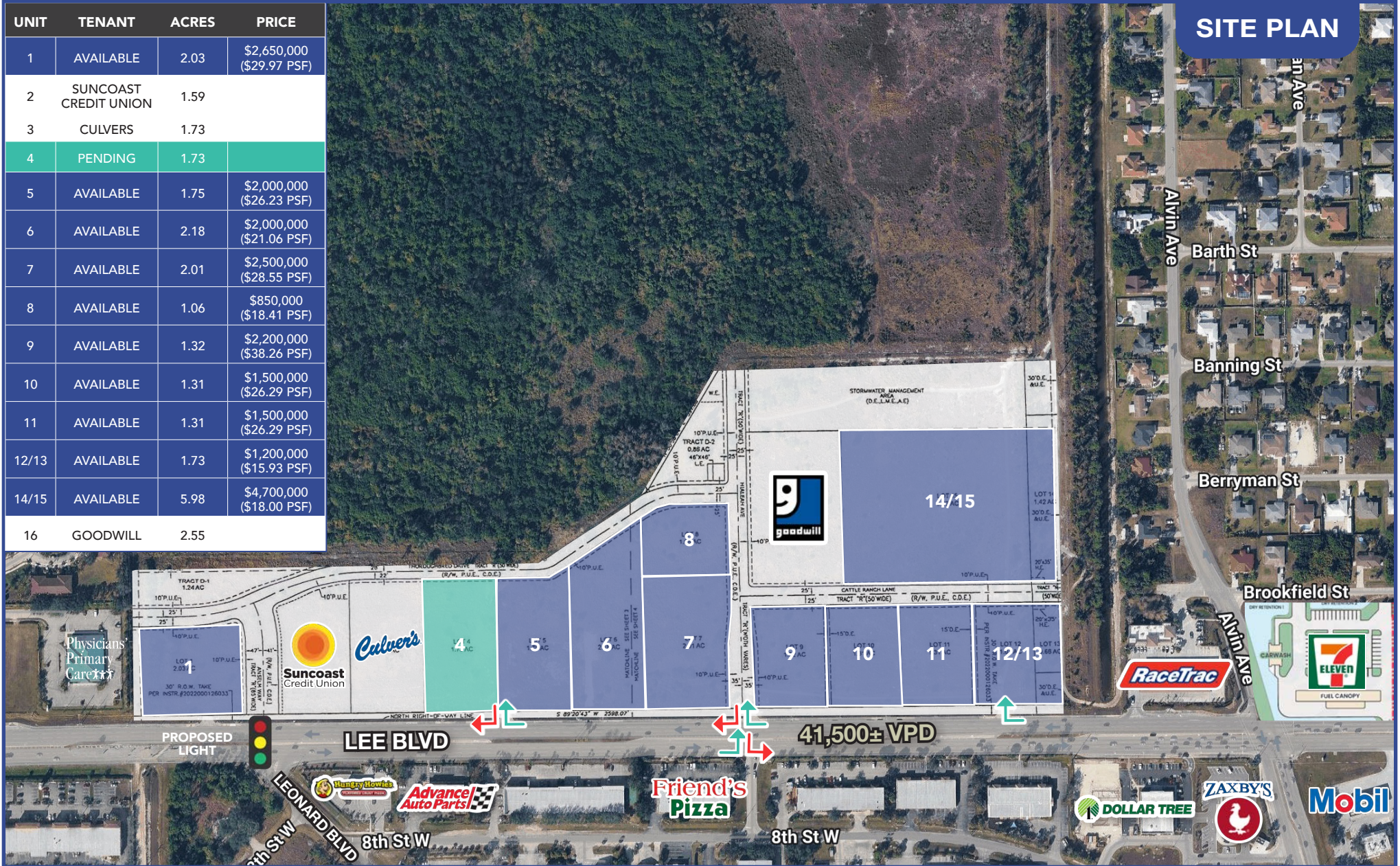
### PROPERTY FEATURES

<b>PRICE</b>	See Site Plan for Details
<b>AVAILABLE</b>	1.06± AC - 5.98± AC
<b>ZONING</b>	PUD
<b>LOCATION</b>	The subject site is located on the NWQ of Lee Blvd and Leonard Blvd (which will be traffic signalized in 2026)

# STONEWOOD CROSSING

5600 LEE BLVD • LEHIGH ACRES, FL 33971

UNIT	TENANT	ACRES	PRICE
1	AVAILABLE	2.03	\$2,650,000 (\$29.97 PSF)
2	SUNCOAST CREDIT UNION	1.59	
3	CULVERS	1.73	
4	PENDING	1.73	
5	AVAILABLE	1.75	\$2,000,000 (\$26.23 PSF)
6	AVAILABLE	2.18	\$2,000,000 (\$21.06 PSF)
7	AVAILABLE	2.01	\$2,500,000 (\$28.55 PSF)
8	AVAILABLE	1.06	\$850,000 (\$18.41 PSF)
9	AVAILABLE	1.32	\$2,200,000 (\$38.26 PSF)
10	AVAILABLE	1.31	\$1,500,000 (\$26.29 PSF)
11	AVAILABLE	1.31	\$1,500,000 (\$26.29 PSF)
12/13	AVAILABLE	1.73	\$1,200,000 (\$15.93 PSF)
14/15	AVAILABLE	5.98	\$4,700,000 (\$18.00 PSF)
16	GOODWILL	2.55	

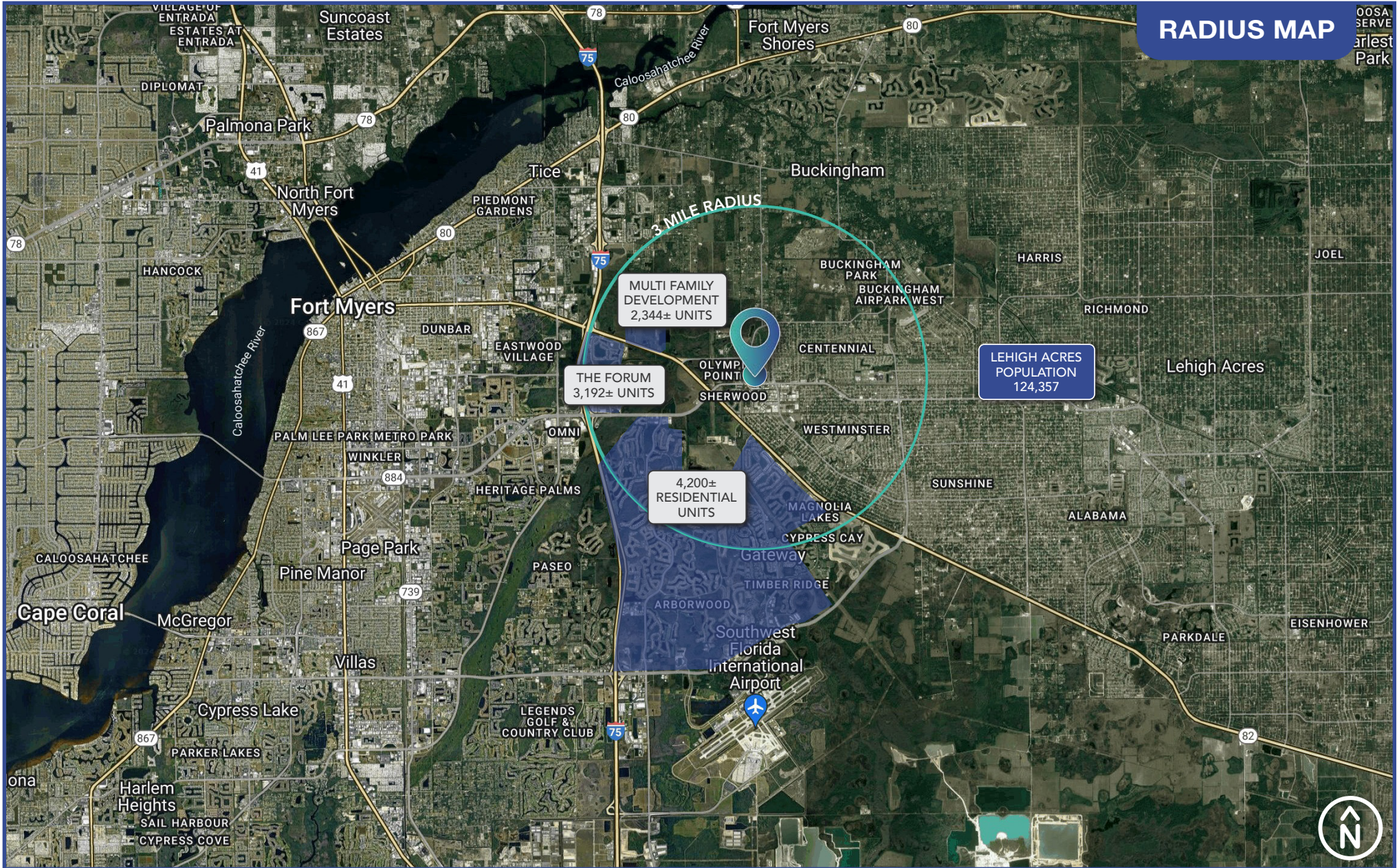


TrinityCRE.com  
 9450 Corkscrew Palms Cir • Suite 101 • Estero, FL 33928  
 © 2026 Trinity Commercial Group  
 This information is considered accurate, but not guaranteed.



# STONEWOOD CROSSING

5600 LEE BLVD • LEHIGH ACRES, FL 33971



TrinityCRE.com  
9450 Corkscrew Palms Cir • Suite 101 • Estero, FL 33928  
© 2026 Trinity Commercial Group  
This information is considered accurate, but not guaranteed.



# STONEWOOD CROSSING

5600 LEE BLVD • LEHIGH ACRES, FL 33971



TrinityCRE.com  
 9450 Corkscrew Palms Cir • Suite 101 • Estero, FL 33928  
 © 2026 Trinity Commercial Group  
 This information is considered accurate, but not guaranteed.

