

## NEW COMMERCIAL DEVELOPMENT

# *Stayner, Ontario* *Main Street & Airport Road*

---

Introducing the newest addition to Simcoe County - Stayner Village Plaza. This beautifully designed plaza offers an incredible opportunity for businesses looking to establish themselves in this thriving area of Ontario.

Located in the heart of Stayner, this shopping centre boasts a prime location on the bustling Main Street at the corner of Airport Road, ensuring maximum visibility for your business. With easy access to major highways and proximity to Barrie, Wasaga Beach, and Collingwood, this location offers unparalleled convenience for both business owners and customers alike.

The plaza offers flexible leasing options to accommodate businesses of all sizes, ranging from small retail spaces to large commercial units. The available units are customizable that can be tailored to meet your specific business needs.

This commercial plaza is perfect for a variety of businesses, including but not limited to: retail stores, restaurants, medical offices, professional services, and more. With the plaza's close proximity to schools, parks, major roads, and residential areas, this is an ideal location for companies that cater to families, individuals, and business professionals.

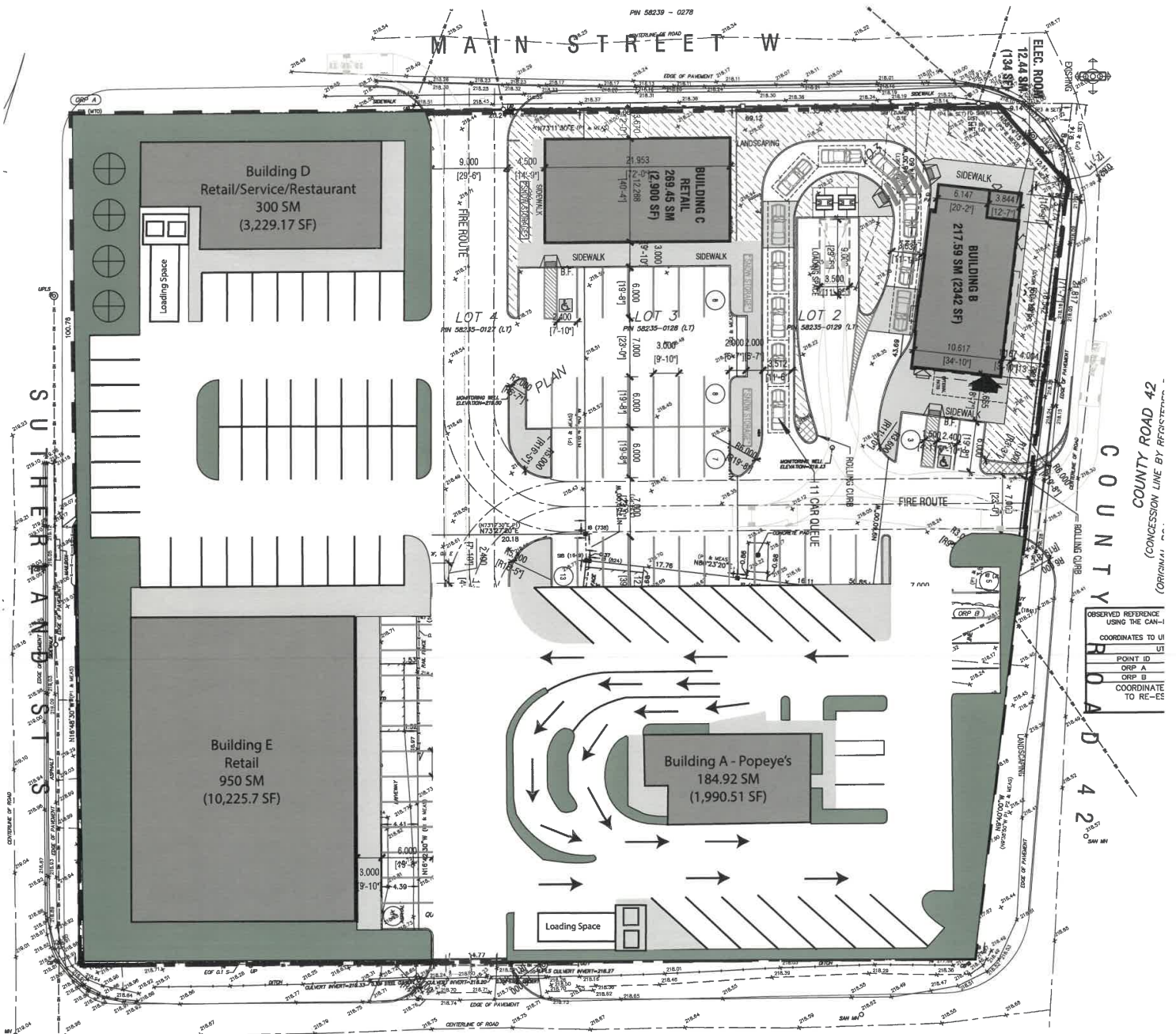
If you are interested in leasing space in this triple 'A', high-traffic commercial site, don't hesitate to contact us. Our leasing team is ready to answer any questions you may have and help you find the perfect space for your business. We look forward to welcoming you to the Stayner community.

#### NATIONAL FRANCHISES CONFIRMED:

- Hamburger QSR Drive-Thru
- Chicken QSR Drive-Thru
- Pizza
- Burrito
- Pita



Signature Realty  
IND. OWNED & OPERATED BROKERAGE



**Ken Finch** FRI, CPM, ABR  
Real Estate Broker

office: 416.443.0300  
direct: 416.520.5544



**ROYAL LEPAGE**  
**COMMERCIAL**

**ROYAL LEPAGE** Signature Realty  
IND. OWNED & OPERATED BROKERAGE

Not intended to solicit those already under contract with another REALTOR®