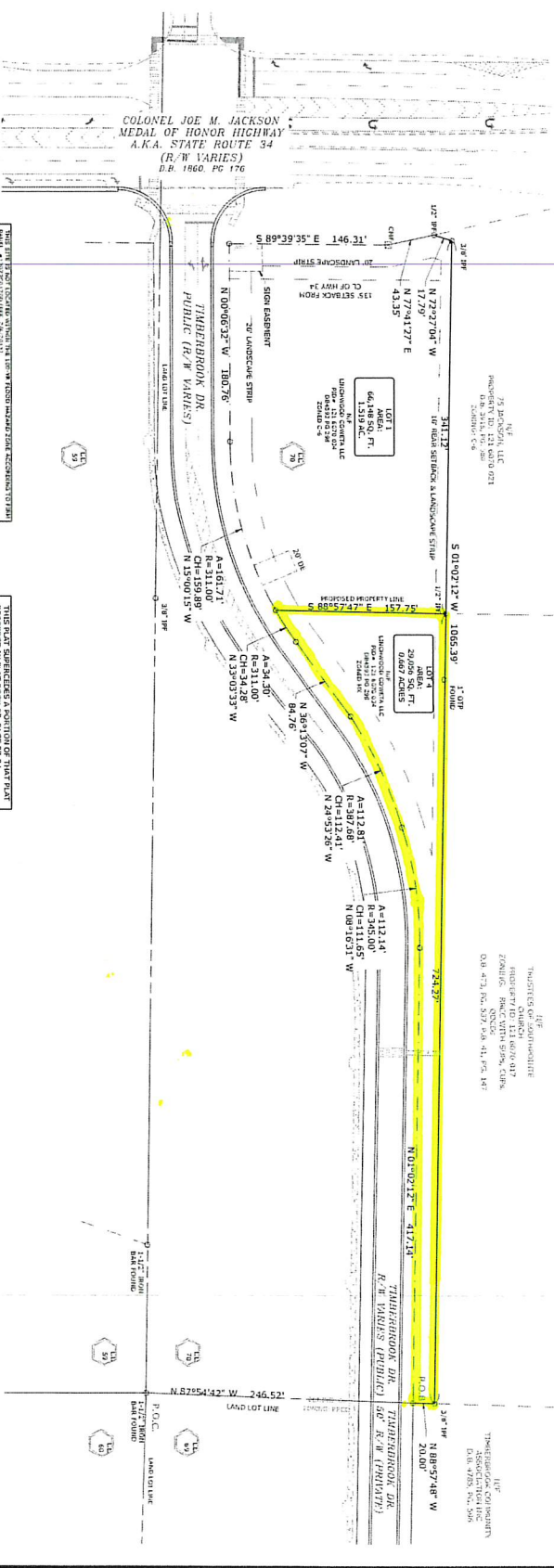


THIS BOOK WILL BE THE RECORD PLAT FOR THE PROJECT SHOWN ON THIS PLAN.

LEGEND:

1. 1/4" = 100'	2. 1/4" = 100'	3. 1/4" = 100'	4. 1/4" = 100'
5. 1/4" = 100'	6. 1/4" = 100'	7. 1/4" = 100'	8. 1/4" = 100'
9. 1/4" = 100'	10. 1/4" = 100'	11. 1/4" = 100'	12. 1/4" = 100'
13. 1/4" = 100'	14. 1/4" = 100'	15. 1/4" = 100'	16. 1/4" = 100'
17. 1/4" = 100'	18. 1/4" = 100'	19. 1/4" = 100'	20. 1/4" = 100'
21. 1/4" = 100'	22. 1/4" = 100'	23. 1/4" = 100'	24. 1/4" = 100'
25. 1/4" = 100'	26. 1/4" = 100'	27. 1/4" = 100'	28. 1/4" = 100'
29. 1/4" = 100'	30. 1/4" = 100'	31. 1/4" = 100'	32. 1/4" = 100'
33. 1/4" = 100'	34. 1/4" = 100'	35. 1/4" = 100'	36. 1/4" = 100'
37. 1/4" = 100'	38. 1/4" = 100'	39. 1/4" = 100'	40. 1/4" = 100'
41. 1/4" = 100'	42. 1/4" = 100'	43. 1/4" = 100'	44. 1/4" = 100'
45. 1/4" = 100'	46. 1/4" = 100'	47. 1/4" = 100'	48. 1/4" = 100'
49. 1/4" = 100'	50. 1/4" = 100'	51. 1/4" = 100'	52. 1/4" = 100'
53. 1/4" = 100'	54. 1/4" = 100'	55. 1/4" = 100'	56. 1/4" = 100'
57. 1/4" = 100'	58. 1/4" = 100'	59. 1/4" = 100'	60. 1/4" = 100'
61. 1/4" = 100'	62. 1/4" = 100'	63. 1/4" = 100'	64. 1/4" = 100'
65. 1/4" = 100'	66. 1/4" = 100'	67. 1/4" = 100'	68. 1/4" = 100'
69. 1/4" = 100'	70. 1/4" = 100'	71. 1/4" = 100'	72. 1/4" = 100'
73. 1/4" = 100'	74. 1/4" = 100'	75. 1/4" = 100'	76. 1/4" = 100'
77. 1/4" = 100'	78. 1/4" = 100'	79. 1/4" = 100'	80. 1/4" = 100'
81. 1/4" = 100'	82. 1/4" = 100'	83. 1/4" = 100'	84. 1/4" = 100'
85. 1/4" = 100'	86. 1/4" = 100'	87. 1/4" = 100'	88. 1/4" = 100'
89. 1/4" = 100'	90. 1/4" = 100'	91. 1/4" = 100'	92. 1/4" = 100'
93. 1/4" = 100'	94. 1/4" = 100'	95. 1/4" = 100'	96. 1/4" = 100'
97. 1/4" = 100'	98. 1/4" = 100'	99. 1/4" = 100'	100. 1/4" = 100'



GENERAL NOTES:

1. THIS PLAN IS A REVISION OF THE ORIGINAL PLAN FOR THE PROJECT SHOWN ON THIS PLAN.
2. THE SURVEY WAS CONDUCTED ON 1/17/2012 BY TODD FREEMAN, LICENSED SURVEYOR, STATE OF GEORGIA, LICENSE NO. 1312.
3. THE SURVEY WAS CONDUCTED IN ACCORDANCE WITH THE GEORGIA SURVEYING CERTIFICATION ACT AND THE RULES AND REGULATIONS OF THE BOARD OF SURVEYING AND MAPPING.
4. THE SURVEY WAS CONDUCTED IN ACCORDANCE WITH THE GEORGIA SURVEYING CERTIFICATION ACT AND THE RULES AND REGULATIONS OF THE BOARD OF SURVEYING AND MAPPING.
5. THE SURVEY WAS CONDUCTED IN ACCORDANCE WITH THE GEORGIA SURVEYING CERTIFICATION ACT AND THE RULES AND REGULATIONS OF THE BOARD OF SURVEYING AND MAPPING.
6. THE SURVEY WAS CONDUCTED IN ACCORDANCE WITH THE GEORGIA SURVEYING CERTIFICATION ACT AND THE RULES AND REGULATIONS OF THE BOARD OF SURVEYING AND MAPPING.
7. THE SURVEY WAS CONDUCTED IN ACCORDANCE WITH THE GEORGIA SURVEYING CERTIFICATION ACT AND THE RULES AND REGULATIONS OF THE BOARD OF SURVEYING AND MAPPING.
8. THE SURVEY WAS CONDUCTED IN ACCORDANCE WITH THE GEORGIA SURVEYING CERTIFICATION ACT AND THE RULES AND REGULATIONS OF THE BOARD OF SURVEYING AND MAPPING.
9. THE SURVEY WAS CONDUCTED IN ACCORDANCE WITH THE GEORGIA SURVEYING CERTIFICATION ACT AND THE RULES AND REGULATIONS OF THE BOARD OF SURVEYING AND MAPPING.
10. THE SURVEY WAS CONDUCTED IN ACCORDANCE WITH THE GEORGIA SURVEYING CERTIFICATION ACT AND THE RULES AND REGULATIONS OF THE BOARD OF SURVEYING AND MAPPING.

OWNER'S ACKNOWLEDGEMENT:

I, Todd Freeman, the owner of the above described land, hereby acknowledge that the above described land is being surveyed and that the survey is being conducted in accordance with the Georgia Surveying Certification Act and the Rules and Regulations of the Board of Surveying and Mapping.

DATE: 01/17/2012

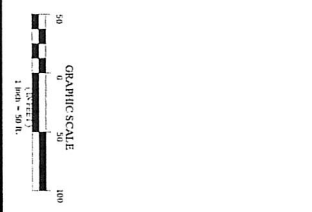
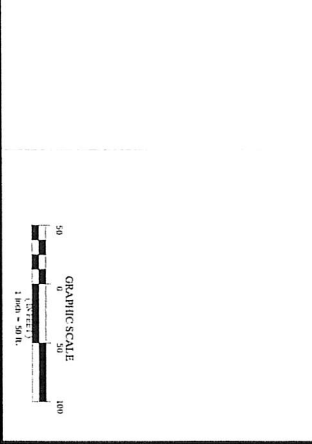
BY: Todd Freeman

STATE OF GEORGIA SURVEYING CERTIFICATION:

TODD FREEMAN, LICENSED SURVEYOR, STATE OF GEORGIA, LICENSE NO. 1312, HAS BEEN DULY CERTIFIED BY THE BOARD OF SURVEYING AND MAPPING AS BEING QUALIFIED TO CONDUCT THE SURVEY SHOWN ON THIS PLAN.

DATE: 01/17/2012

BY: Todd Freeman



AMENDED LOT SURVEY FOR:

TODD FREEMAN

LOCATED IN:

LAND LOT 70 - 6TH DISTRICT COWETA COUNTY, GEORGIA

PLAT INFORMATION

NO. _____

REVISIONS _____

DATE _____

SEI

SOUTHEASTERN ENGINEERING, INC.

1510 W. STATE STREET, SUITE 1000
 ATLANTA, GEORGIA 30334
 TEL: 404.525.1111
 FAX: 404.525.1112
 WWW.SOUTHEASTERNENGINEERING.COM