

1122 Longford Road

Phoenixville, PA

Key Facts

Building type	Industrial space
---------------	------------------

Building size	191,824 SF
---------------	------------

Space available	191,824 SF
-----------------	------------



Contact Us

Learn more about this property or schedule a tour by reaching out to our local investment and leasing officer.

Eli Gurwitz

+1 (267) 431-2495

eli.gurwitz@eqtpartners.com

1122 Longford Road

Phoenixville, PA

Building Specifications

191,824 Total SF

Warehouse: 161,901 SF

First Floor Office: 9,754 SF

Second Floor Office: 9,909 SF

Third Floor Office: 10,260 SF

35' Clear Ceilings

120' Truck Court

19 Dock Doors

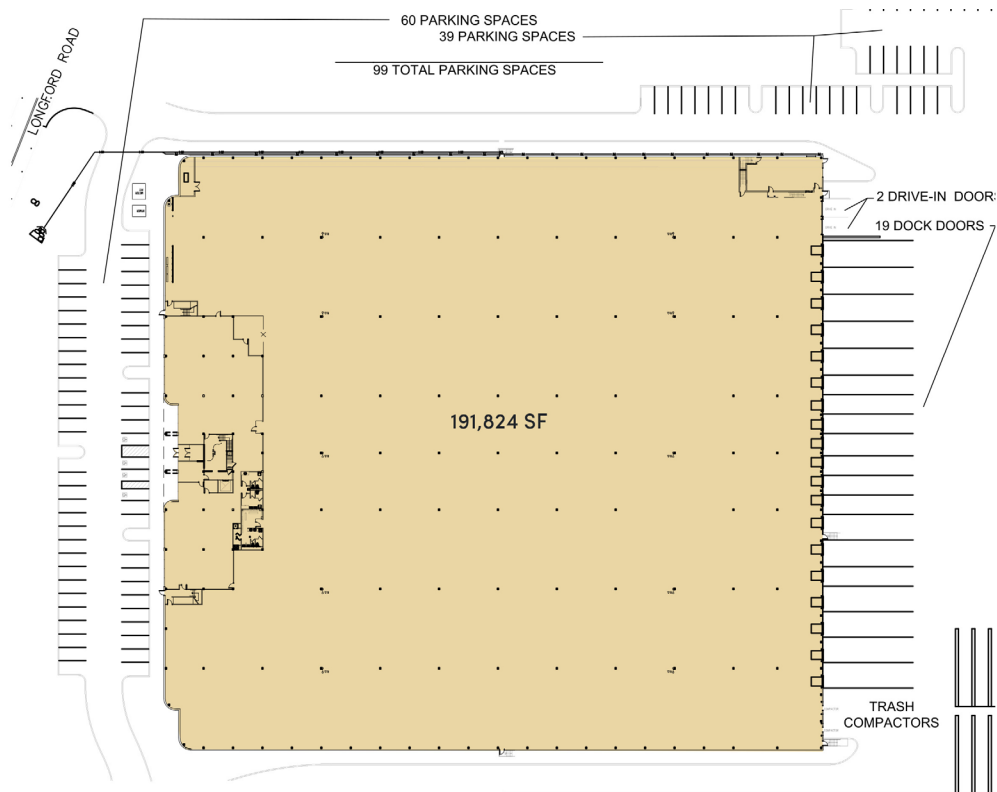
2 Drive-in Doors

99 Parking spaces

1200 AMPS

LED Lighting

ESFR Sprinkler System



Contact Us

Learn more about this property or schedule a tour by reaching out to our local investment and leasing officer.

Eli Gurwitz

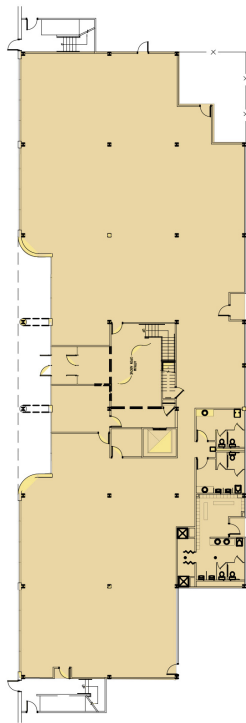
+1 (267) 431-2495

eli.gurwitz@eqtpartners.com

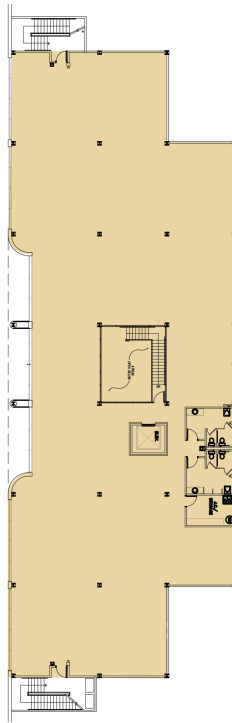
1122 Longford Road

Phoenixville, PA

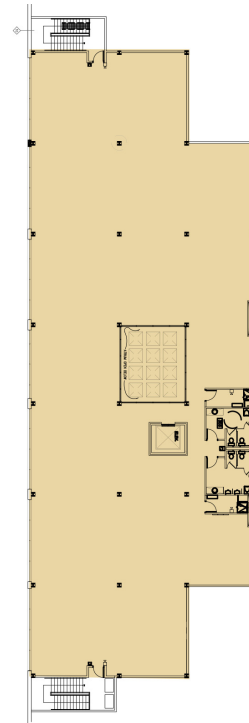
Office Floor Plans



9,754 SF
FIRST FLOOR OFFICE



9,909 SF
SECOND FLOOR OFFICE



10,260 SF
THIRD FLOOR OFFICE

Contact Us

Learn more about this property or schedule a tour by reaching out to our local investment and leasing officer.

Eli Gurwitz

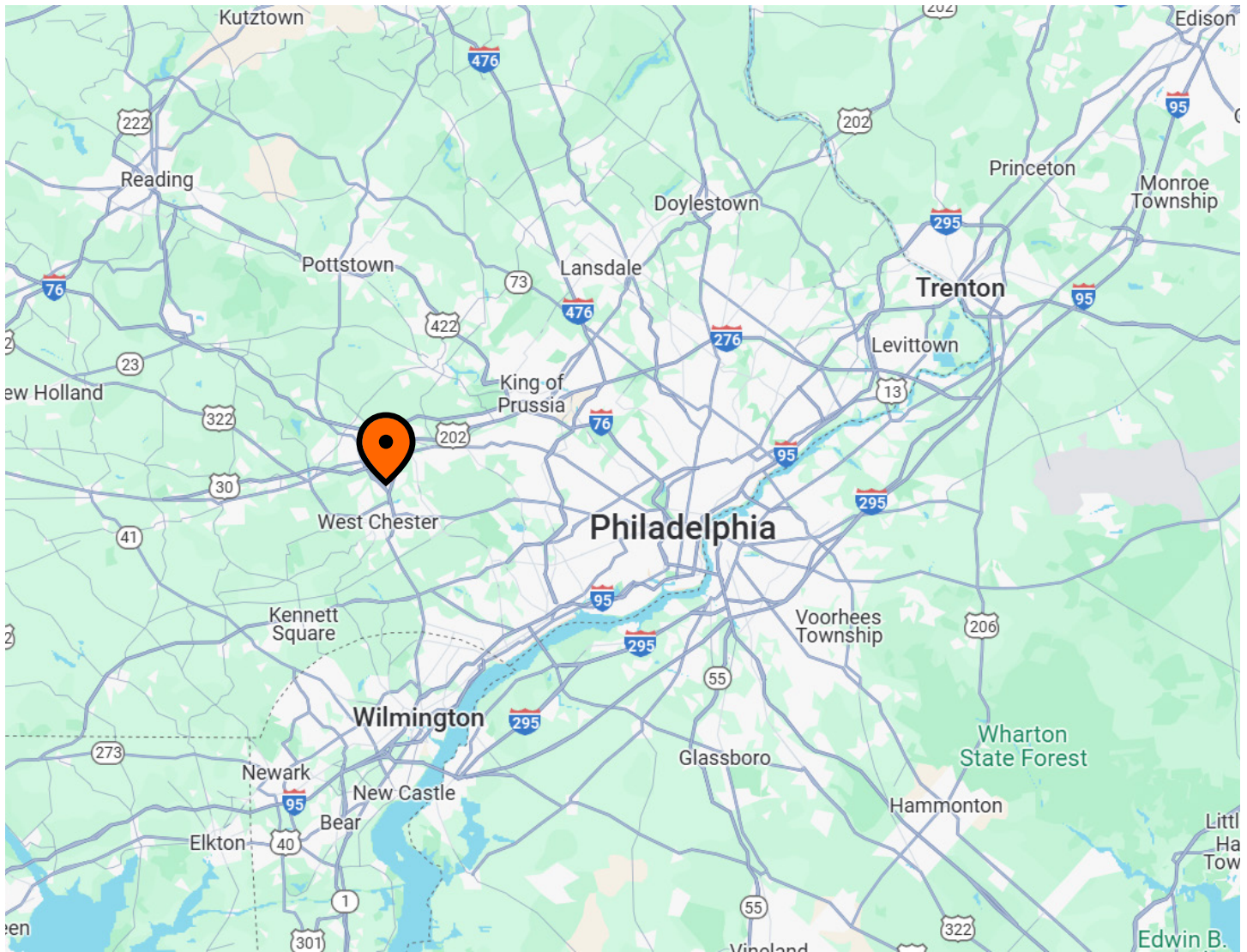
+1 (267) 431-2495

eli.gurwitz@eqtpartners.com

1122 Longford Road

Phoenixville, PA

Location



Contact Us

Learn more about this property or schedule a tour by reaching out to our local investment and leasing officer.

Eli Gurwitz

+1 (267) 431-2495

eli.gurwitz@eqtpartners.com