



**3211 BORDENTOWN  
AVENUE**

**Parlin, New Jersey**

**Property Features:**

- ±3,300 sq. ft. shop on 1.74 usable acres
  - 0.7 AC Paved
- 4 Drive-Ins
- 14' Clear Ceiling Height
- Located approximately two miles from Route 9 & the Garden State Parkway, four miles from Route 18, and eight miles to I-95
- **Call for sale price information**



90 Woodbridge Center Drive, Suite 160  
Woodbridge, NJ 07095  
732 985 3000 | [naidb.com](http://naidb.com)

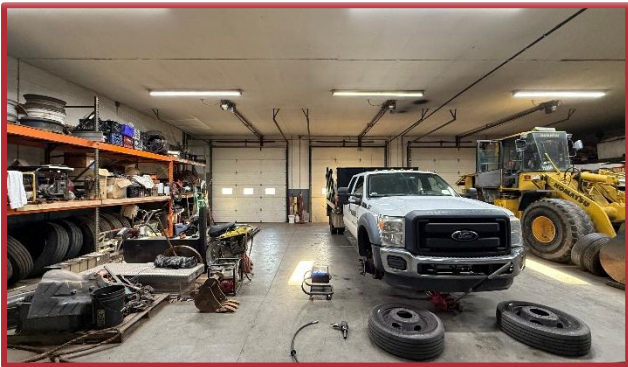
For further information please contact Exclusive Broker:

**Kyle Gerace**  
Vice President

732 985 3000 ext. 229  
[kgerace@naidb.com](mailto:kgerace@naidb.com)

**Christopher Chiusolo**  
Vice President

732 985 3000 ext. 210  
[cchiusolo@naidb.com](mailto:cchiusolo@naidb.com)



**3211 BORDENTOWN AVENUE**

### Location Highlights

- ± 2 miles to Route 9
- ± 2 miles to Garden State Parkway
- ± 3 miles to Route 35
- ± 4 miles to Route 18
- ± 8 miles to I-95
- ± 22 miles to Port Newark / Elizabeth
- ± 33 miles to the Holland Tunnel
- ± 35 miles to the Lincoln Tunnel

90 Woodbridge Center Drive, Suite 160  
Woodbridge, NJ 07095  
732 985 3000 | [naidb.com](http://naidb.com)

For further information please contact Exclusive Broker:

**Kyle Gerace**  
Vice President

732 985 3000 ext. 229  
[kgerace@naidb.com](mailto:kgerace@naidb.com)

**Christopher Chiusolo**  
Vice President

732 985 3000 ext. 210  
[cchiusolo@naidb.com](mailto:cchiusolo@naidb.com)