



**FOR LEASE** | **427,222 SF**  
**364 EXIDE DRIVE** | **BRISTOL, TN**

**ROBERT KRIEWALDT 920-915-9746 | ROBERT@PHOENIX3PL.COM**



**PHOENIX**  
**INVESTORS**

*Opportunity. Execution. Value Creation.*

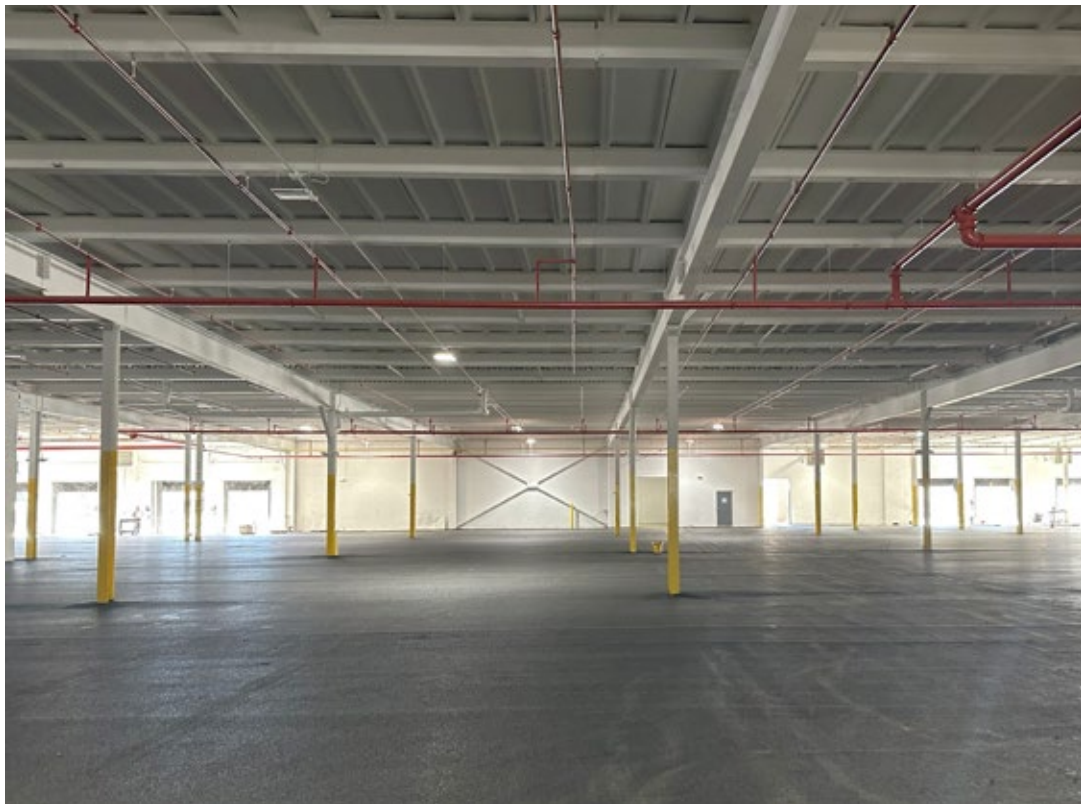
This document has been prepared by Phoenix Investors for advertising and general information only. Phoenix Investors makes no guarantees, representations, or warranties of any kind, expressed or implied, regarding the information including, but not limited to, warranties of content, accuracy, and reliability.



# PROPERTY DETAILS

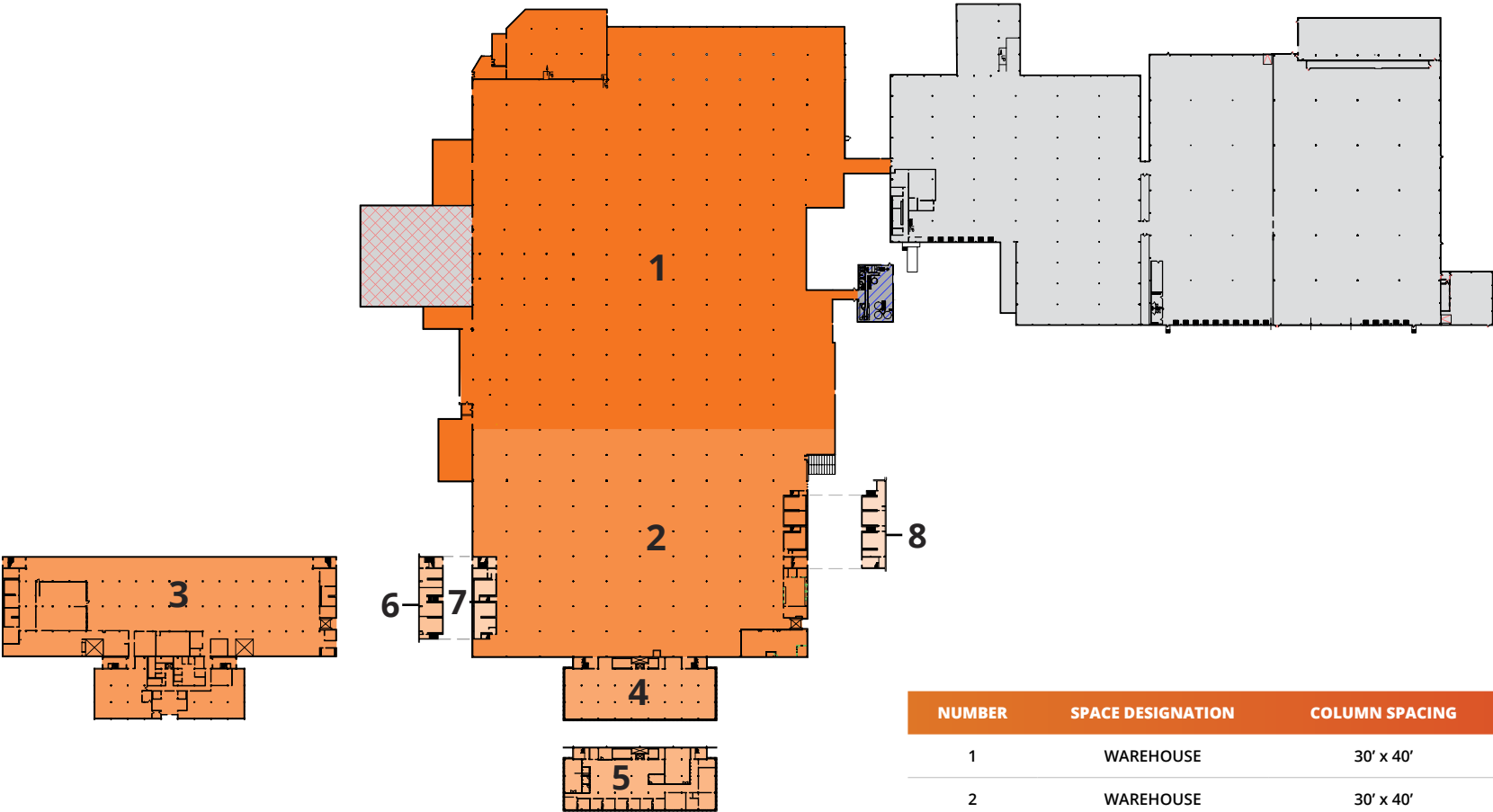
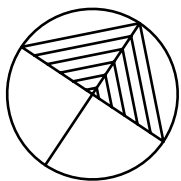
364 EXIDE DRIVE | BRISTOL, TN

AVAILABLE SPACE	427,222 SF
MINIMUM DIVISIBLE	50,000 SF
WAREHOUSE SPACE	330,407 SF
OFFICE SPACE	35,437 SF
LOWER LEVEL WAREHOUSE	61,378 SF
FLOORS	3
ELEVATORS	2
DOCK DOORS	10
DRIVE-IN DOORS	1 (12' W x 12' H)
CLEAR HEIGHT	10' – 46'
COLUMN SPACING	20' x 30' - 30' x 40'
ROOF	EPDM
WALLS	Masonry & Metal
FLOORS	6" Reinforced Concrete
YEAR BUILT	1958 - 1997
YEAR RENOVATED	2025
FIRE SUPPRESSION	100% Wet
LIGHTING	High Efficiency Fluorescent & LED
POWER	Heavy
PARKING	544 Surface Spaces
LAND AREA	53.01 Acres
ZONING	M-1 Light Industrial/Business Zone
PARCEL ID	067-032.00   067-032.10
OPEX ESTIMATE	\$0.63/SF



# FLOOR PLAN

364 EXIDE DRIVE | BRISTOL, TN



NUMBER	SPACE DESIGNATION	COLUMN SPACING	SQUARE FEET
1	WAREHOUSE	30' x 40'	222,413 SF
2	WAREHOUSE	30' x 40'	107,994 SF
3	LOWER LEVEL WAREHOUSE	20' X 30'	61,378 SF
4	FIRST FLOOR OFFICES	N/A	13,322 SF
5	SECOND FLOOR OFFICE	N/A	13,476 SF
6	SECOND FLOOR OFFICE	N/A	2,898 SF
7	OFFICES	N/A	2,891 SF
8	SECOND FLOOR OFFICE	N/A	2,850 SF
TOTAL			427,222 SF

# LOCATION MAP

364 EXIDE DRIVE | BRISTOL, TN

I-81	7 MILES
TRI-CITIES AIRPORT	10 MILES
I-26	18 MILES
I-40	83 MILES
KNOXVILLE	109 MILES
CHARLOTTE	156 MILES

