



NEW INDUSTRIAL FLEX AVAILABLE

For Lease!

738 CASTLETON ROAD

CASTLE ROCK, CO, 80104

INDUSTRIAL FLEX BUILDING IN THE HEART OF CASTLE ROCK

This is a very unique condo property, with 5 drive in bays. Possible live/work opportunity with this amazing property. Close to the new developments at the promenade in Castle Rock and easily accessible from the highway. Special use zoning, call for details. This building has many possibilities and you can get creative with the business.

HIGHLIGHTS

- Prime location in Castle Rock, the fastest growing city in the nation!
- Located right off of the main highway through Castle Rock, provides convenient access.
- Wide range of possibilities with a luxury finish.
- Fully updated with exciting design renovations.

6

PARKING SPACES

11'

CEILING HEIGHT

\$17

Per SQFT

\$7

NNN

PROPERTY TYPE:

YEAR BUILT:

BUILDING CLASS

TENANCY

NO, STORIES

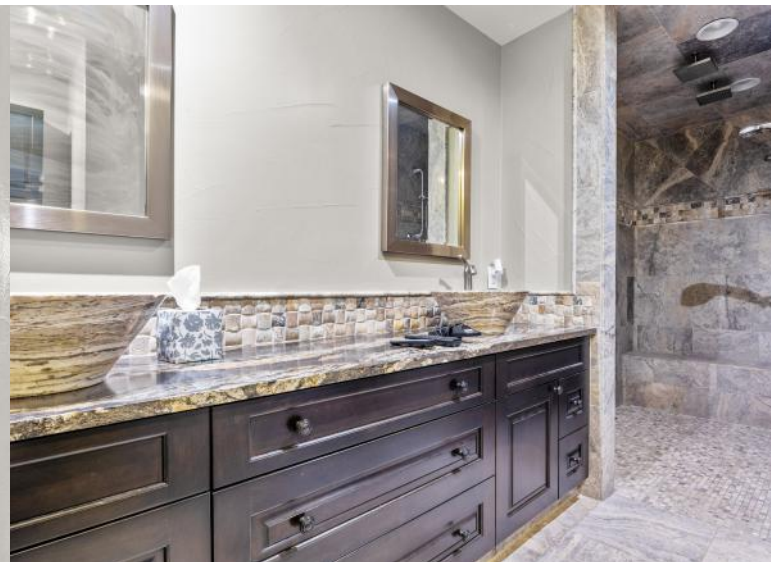
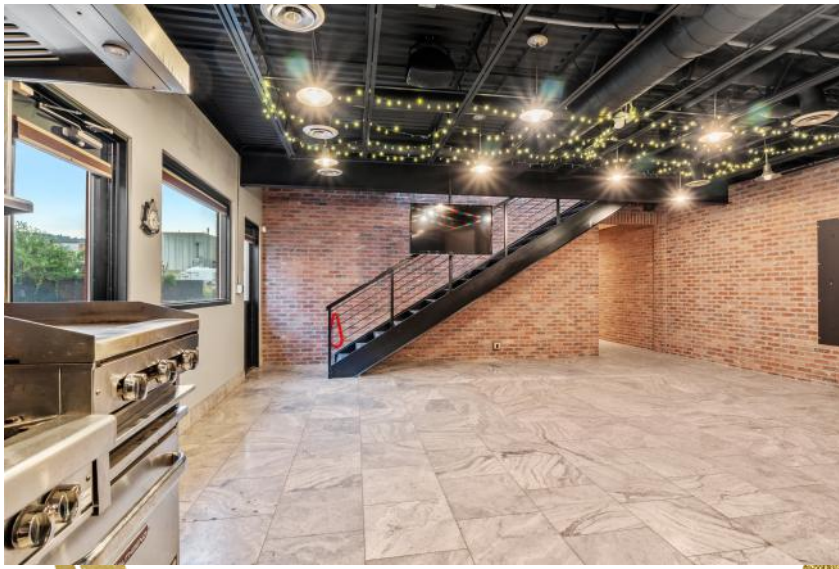
FLEX

2004

B

SINGLE

2



JEFFREY SAMUELSON

Commercial Broker CCIM

MOBILE 3035228277

JEFF@JEFFSAMUELSON.COM FA.100049334

REALTYONEGROUP
PREMIER

8600 Park Meadows Drive 300, Lone Tree, CO
80124

All material presented herein is intended for information purposes only. While this information is believed to be correct, it is represented subject to errors, omissions, changes or withdrawal without notice. All property information, including, but not limited to square footage, room count, number of bedrooms, and school district in property listings should be independently verified by your own attorney, architect or zoning expert. If your property is currently listed with another real estate broker, please disregard this offer. It is not our intention to solicit the offerings of other real estate brokers. Each office is independently owned and operated.

