

4212 - 4214 MARTIN ROAD
COMMERCE TWP., MICHIGAN

INDUSTRIAL FOR SALE OR LEASE

For Sale: 9,635 Square Feet

For Lease: 2,250 – 5,975 Square Feet

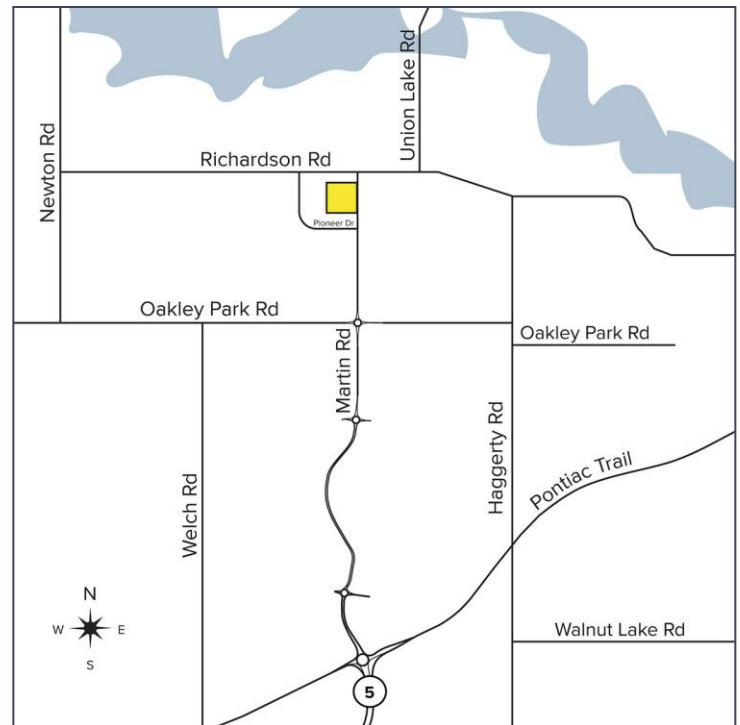


**SIGNATURE
ASSOCIATES**
KNOW SIGNATURE | KNOW RESULTS



PROPERTY FEATURES

- 2,250 - 5,975 square feet available for lease
 - Suite A: 3,725 sq. ft. with 900 sq. ft. on 2nd floor of warehouse and mezzanine
 - Suite B: 2,250 sq. ft. with 500 sq. ft. of warehouse that could be expanded
 - Suites AB: 5,975 sq. ft. with (2) grade level doors
- 9,635 square foot building for sale
- 14' clear height
- Office area can be reconfigured and/or reduces in both suites
- Large patio area on south side of building
- Separate 1.5 acres available adjacent to the west at 4183 Pioneer Drive
- Contact Broker for pricing



For more information, please contact:

JEFF LEMANSKI

(248) 359 0641

jlemanski@signatureassociates.com

SIGNATURE ASSOCIATES

One Towne Square, Suite 1200

Southfield, MI 48076

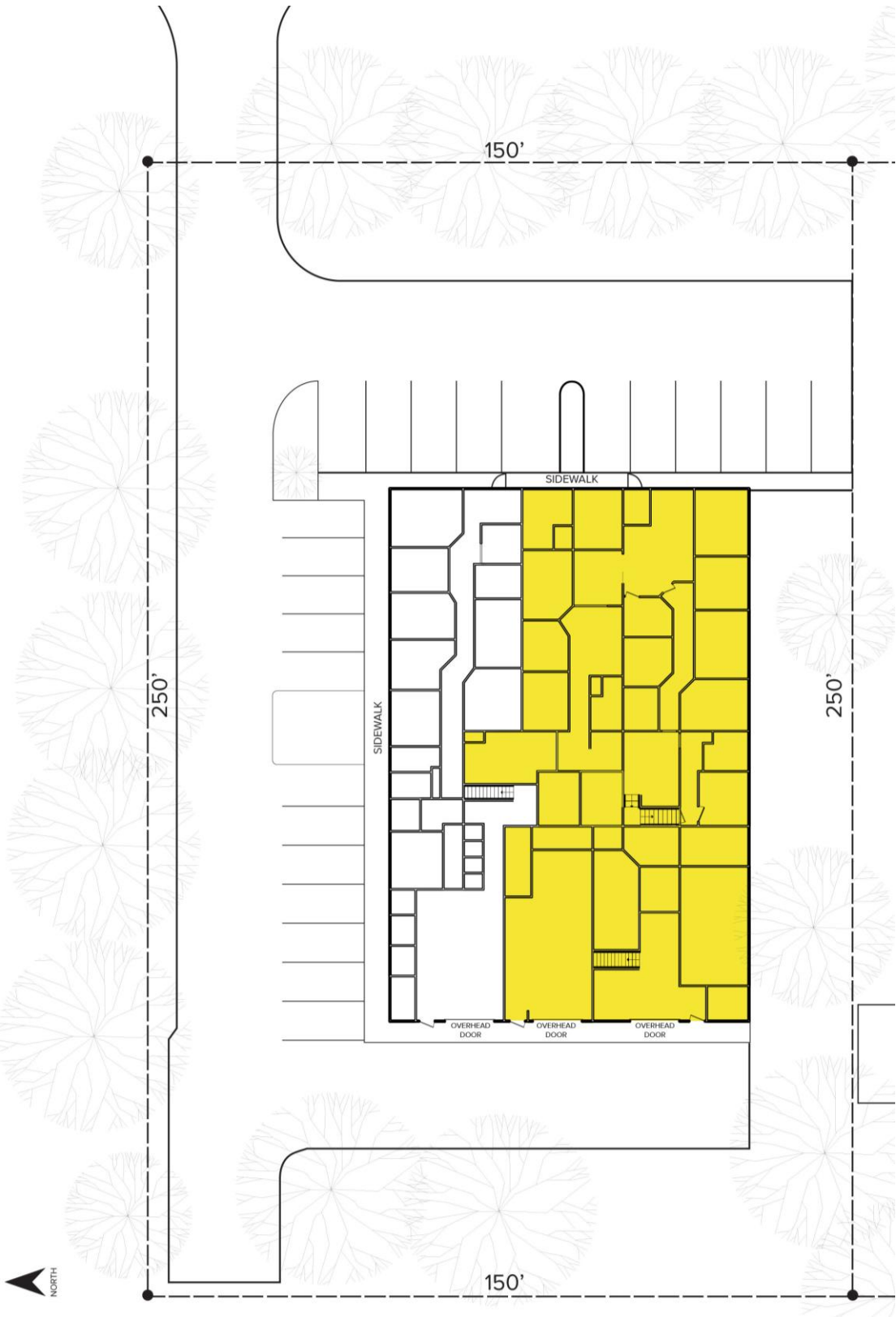
www.signatureassociates.com

4212-4214 Martin Road – Commerce Twp., Michigan

Industrial For Sale or Lease

For Lease –
2,250-5,975 SF
For Sale –
9,635 SF

Site Plan



For more information, please contact:

JEFF LEMANSKI
(248) 359 0641
jlemanski@signatureassociates.com

SIGNATURE ASSOCIATES
One Towne Square, Suite 1200
Southfield, MI 48076
www.signatureassociates.com

Information is subject to verification and no liability for errors or omissions is assumed. Price is subject to change and listing withdrawal.

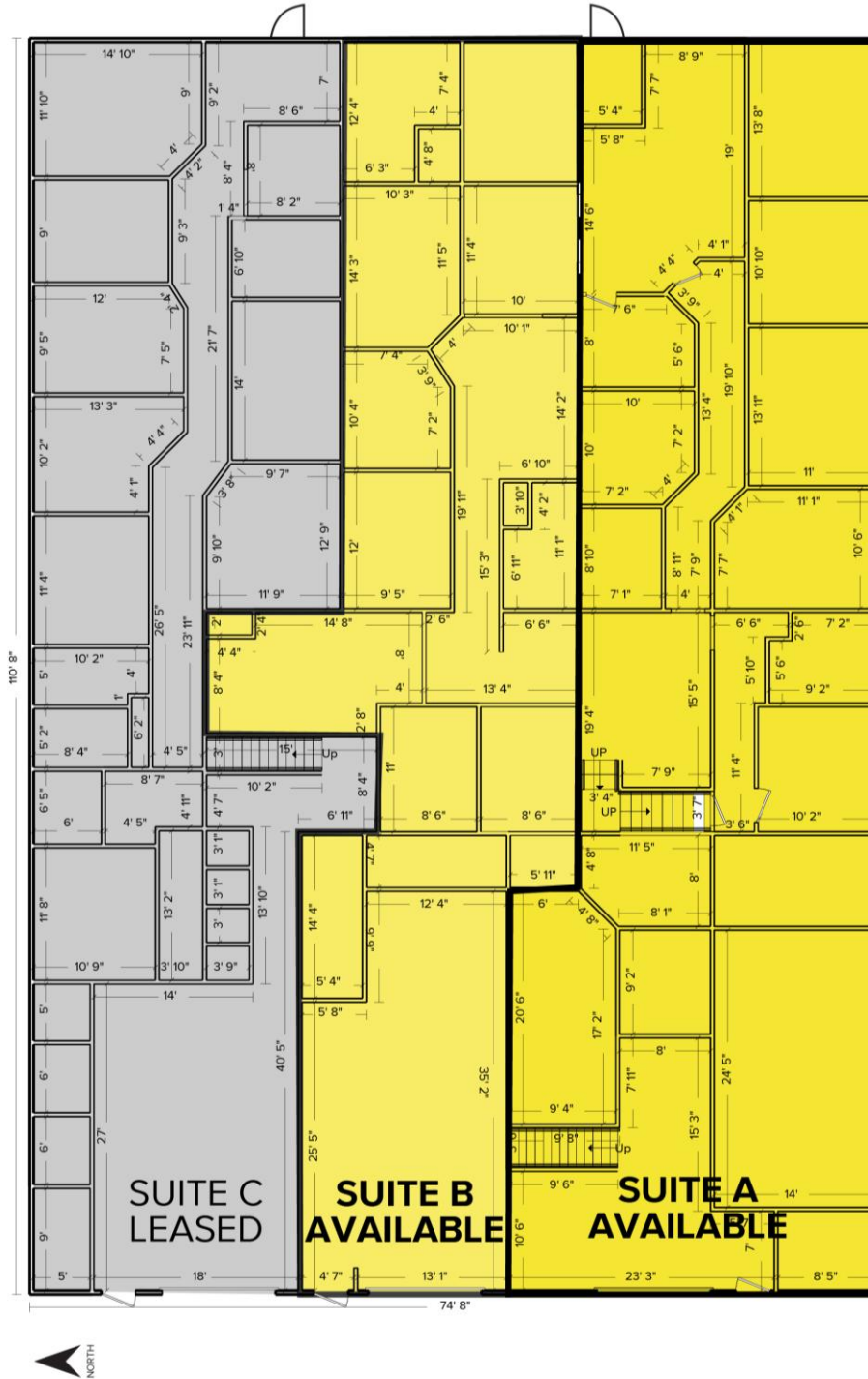
4212-4214 Martin Road – Commerce Twp., Michigan

Industrial For Sale or Lease

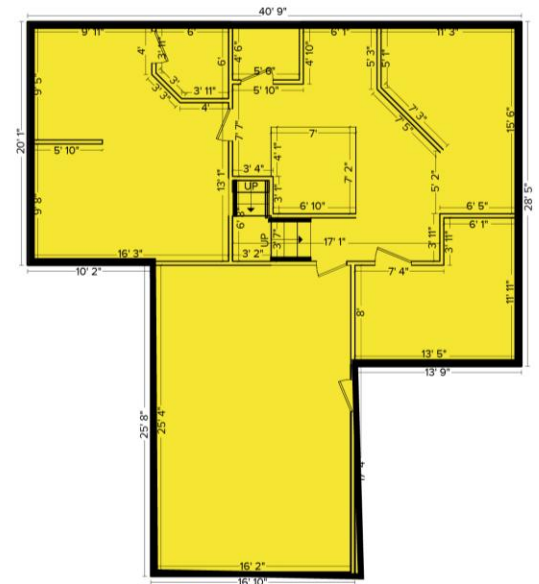
For Lease –
2,250-5,975 SF

For Sale –
9,635 SF

Floor Plan



SECOND FLOOR - SUITE A



For more information, please contact:

JEFF LEMANSKI
(248) 359 0641
jlemanski@signatureassociates.com

SIGNATURE ASSOCIATES
One Towne Square, Suite 1200
Southfield, MI 48076
www.signatureassociates.com

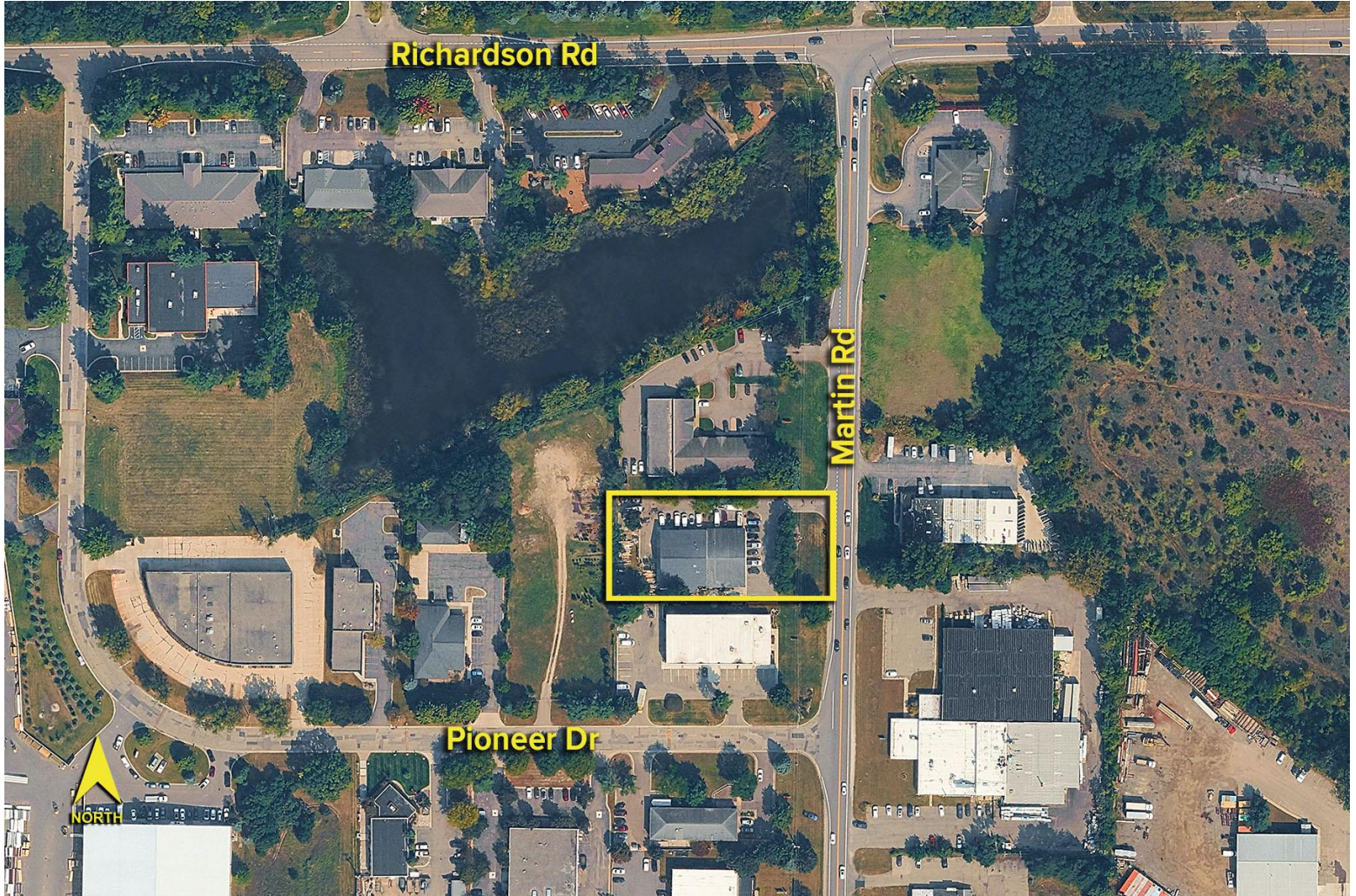
4212-4214 Martin Road – Commerce Twp., Michigan

Industrial For Sale or Lease

For Lease –
2,250-5,975 SF

For Sale –
9,635 SF

Aerial



For more information, please contact:

JEFF LEMANSKI
(248) 359 0641
jlemanski@signatureassociates.com

SIGNATURE ASSOCIATES
One Towne Square, Suite 1200
Southfield, MI 48076
www.signatureassociates.com