

5940 Merrill Road Jacksonville, FL 32277



Commercial Realty, Inc.

Acres / Interior SF: .25 Acre / 1,892-SF

Zoning: CCG-1

RE #: 116100-0000

Watson Commercial Realty Inc.

4685 Sunbeam Road, Suite 4

Jacksonville, FL 32257

904-200-1030

Will Messer

5940 Merrill Road

Offering Statistics

Sales Price	\$324,900
Cap Rate	5.71%
NOI	\$18,540
Lease Term	5 Years
Years Remaining	1 Year
Lot Size	.25-Acre; 10,890-SF
Building Size	1,892-SF
Land \$/SF	\$24.61/SF
Building \$/SF	\$141.65/SF
Year Built	1963
Zoning	CCG-1
Traffic Count	15,500

Demographics—CoStar, Census

Proximity:	1 mile	3 miles	5 miles
Total Population:	16.8K	79.2K	186.6K
Median Age:	33.5	35.8	36.8
Households:	6.1K	30.7K	76.1K
Avg. HH Inc.	\$57.5K	\$64.5K	\$60.8K



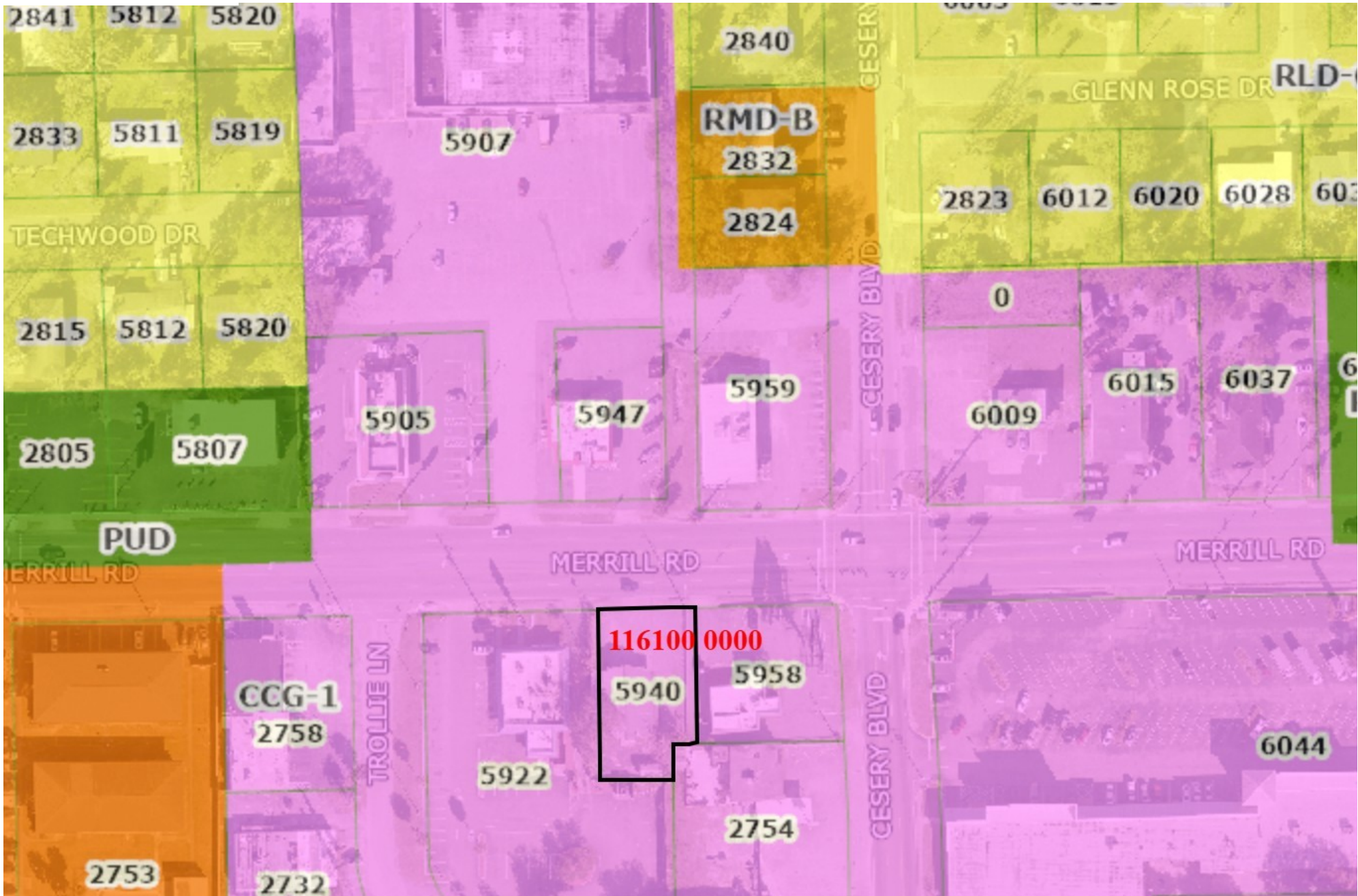
WILL MESSER
Commercial Sales Associate

Mobile: **904-200-1030**
 Email: **wmesser@watsoncommercial.com**
 Web: **WatsonCommercial.com**

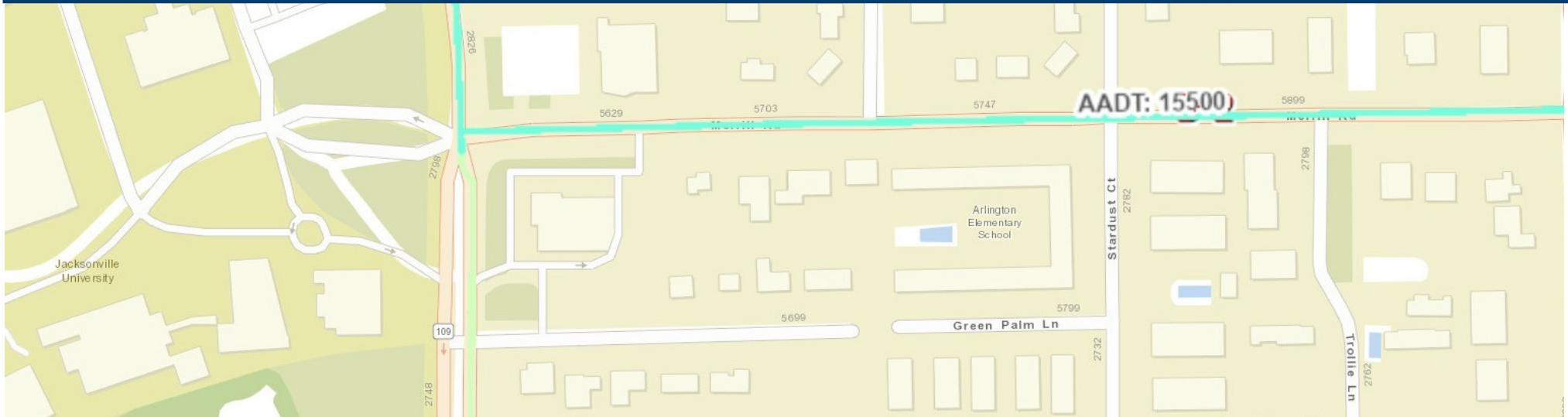
Leading
 REAL ESTATE
 COMPANIES
 OF THE WORLD



5940 Merrill Road Zoning Map



5940 Merrill Road Traffic Count



15,500 Average Annual Daily Traffic (AADT) Florida Department of Transportation (FDOT) 2023





5940 Merrill Road Location

Jacksonville University	.3 mile / 1 min.	I-95	6 miles / 11 mins.
Mathews Bridge	2 miles / 6 mins.	I-10	8 miles / 13 mins.
I-295	3 miles / 6 mins.		
Everbank Field	4 miles / 8 mins.		



WILL MESSER
Commercial Sales Associate

Mobile: **904-200-1030**
Email: **wmesser@watsoncommercial.com**
Web: **WatsonCommercial.com**

Leading
REAL ESTATE
COMPANIES
OF THE WORLD

<1 mile:



1 mile:



WILL MESSER

Commercial Sales Associate

Mobile:

904-200-1030

Email:

wmesser@watsoncommercial.com

Web:

WatsonCommercial.com

Leading
REAL ESTATE
COMPANIES
OF THE WORLD