

Multi-Tenant Flex/Office/ Warehouse Building

**528 Sunbury Road
Midway, GA 31320**

A ±33,000 SF Class A flex/office building built in 2023, located in the Tradeport East Industrial Park in Midway, Georgia.



Property Features

The property is situated on Sunbury Road in Midway, only 1.2 miles from Interstate 95. The ±33,000 SF property is less than 40 miles from the Port of Savannah and the Hyundai Metaplant. The site is surrounded by other major tenants including Target, Tire Rack, Hooker Furniture and Safavieh.

The property is available for sale, but also has space available for lease.

- Flexible options to lease warehouse space, office space or both
- Flexible lease terms (1 - 2 years)
- ±7,450 SF warehouse space with 2nd floor office space available now

Property Details

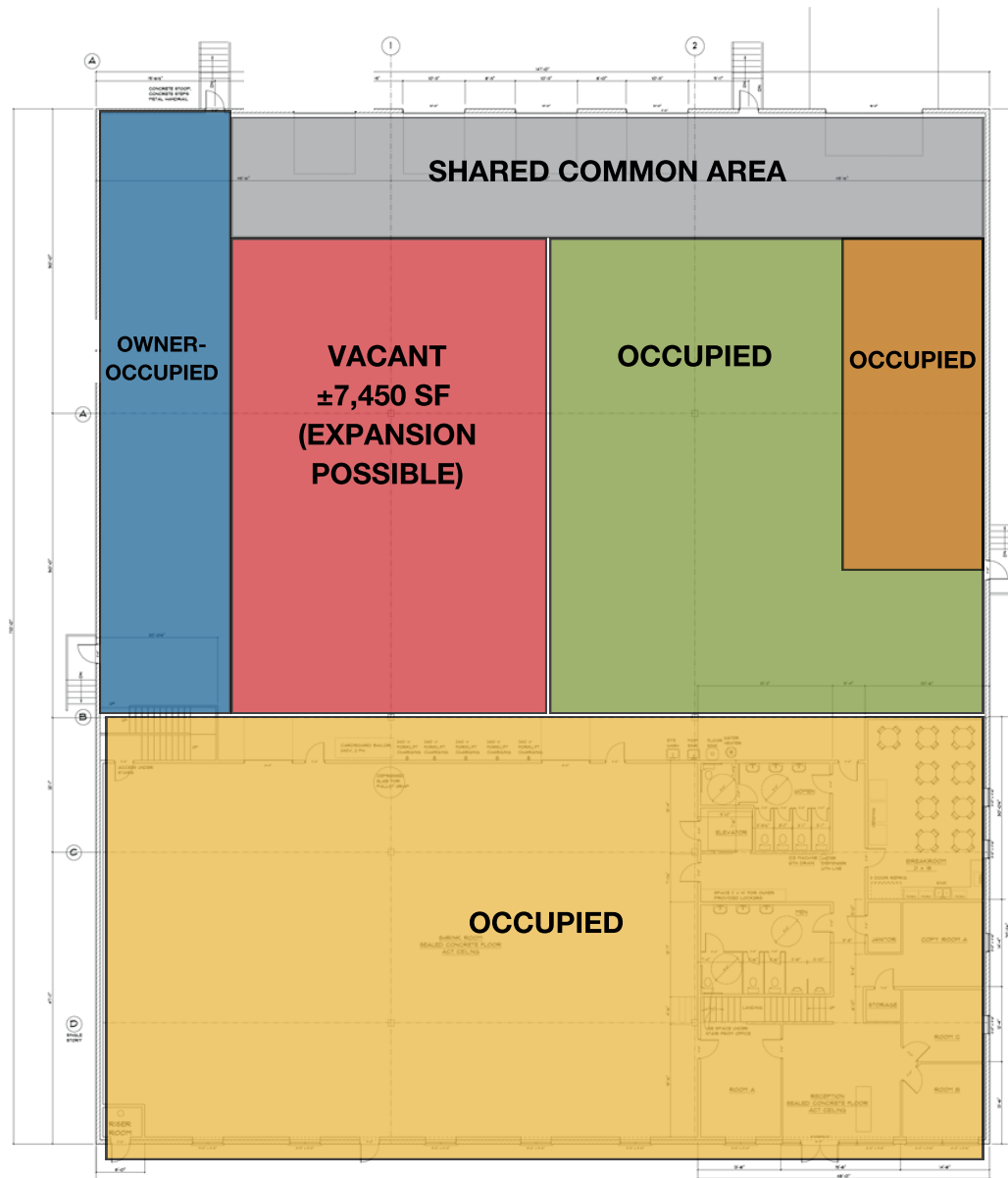
Sale Price	\$7,000,000
Lease Rate	\$16.50/SF NNN
Total Square Feet	±33,000 SF
Available Square Feet for Lease	±10,000 SF -33,000 Warehouse & Office space
Clear Height	32 Feet
Dock Doors	4 dock doors equipped with levelers 1 drive-in door
Power	3-Phase Power
Zoning	I1 - Light Industrial

**For more information,
please contact:**

Tony Lembeck
m: 914 393 0041

o: 912 250 6700
e: tlembeck@naisavannah.com

Floor Plan 1st Floor



For more information,
please contact:

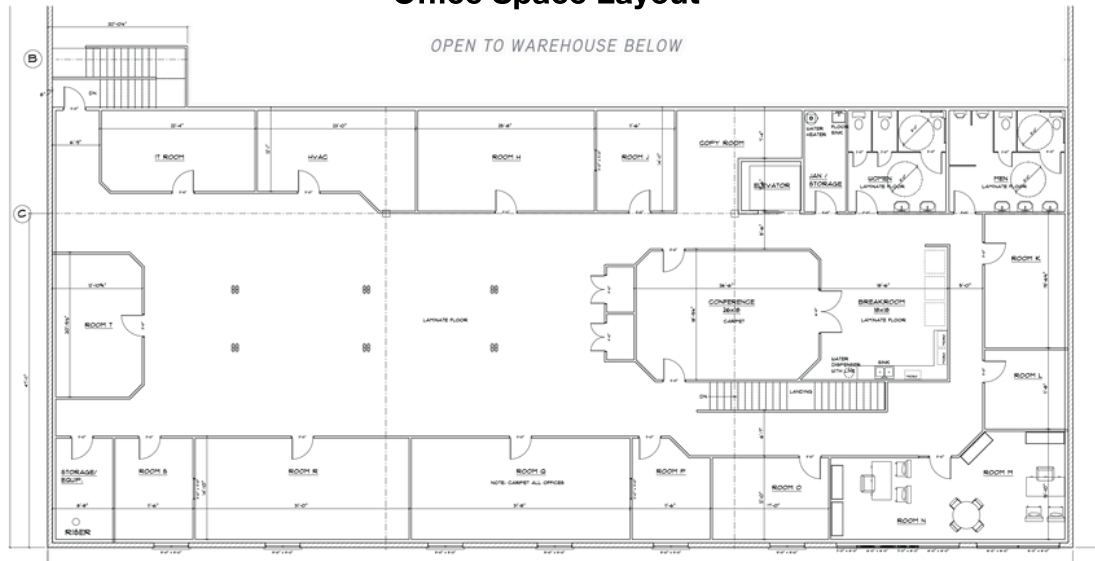
Tony Lembeck
m: 914 393 0041

o: 912 250 6700
e: tlembeck@naisavannah.com

Floor Plan

2nd Floor

Office Space Layout



**For more information,
please contact:**

Tony Lembeck

m: 914 393 0041

o: 912 250 6700

e: tlembeck@naisavannah.com

Building Photos



**For more information,
please contact:**

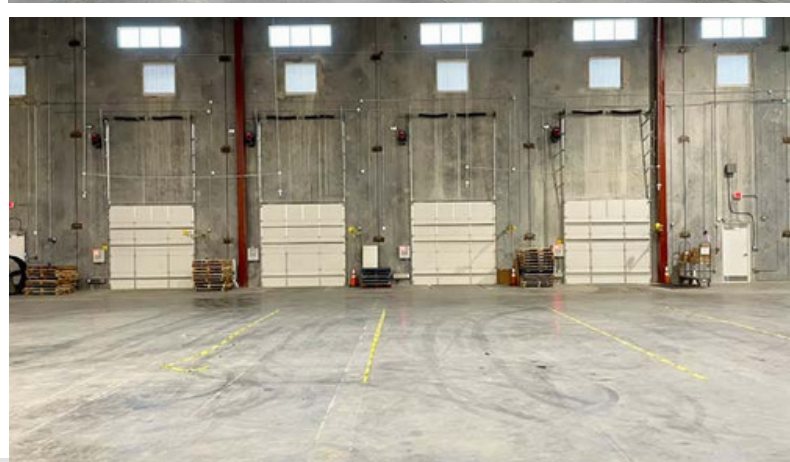
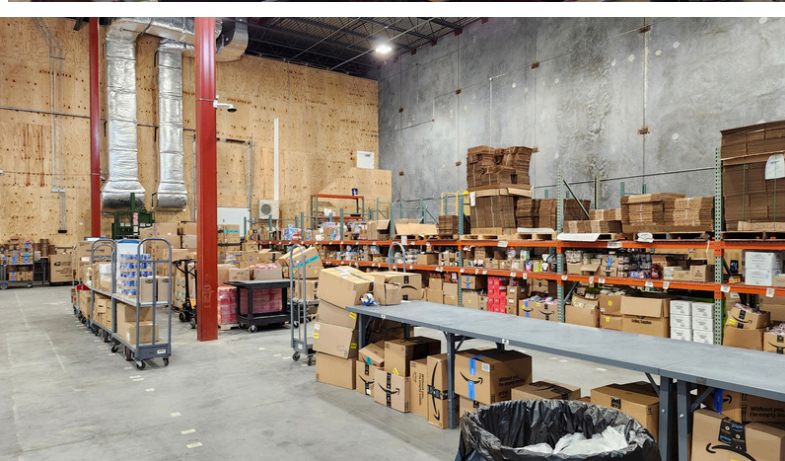
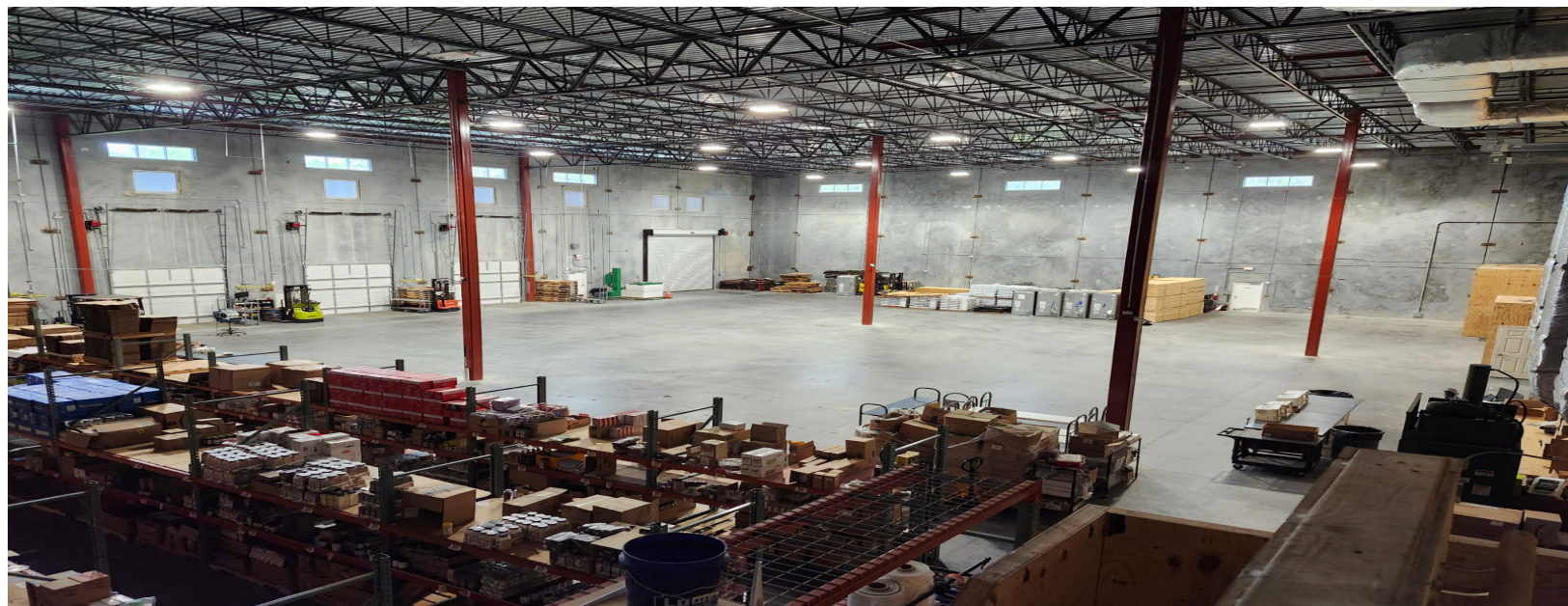
Tony Lembeck

m: 914 393 0041

o: 912 250 6700

e: tlembeck@naisavannah.com

Warehouse Photos



**For more information,
please contact:**

Tony Lembeck

m: 914 393 0041

o: 912 250 6700

e: tlembeck@naisavannah.com

Office Photos



**For more information,
please contact:**

Tony Lembeck

m: 914 393 0041

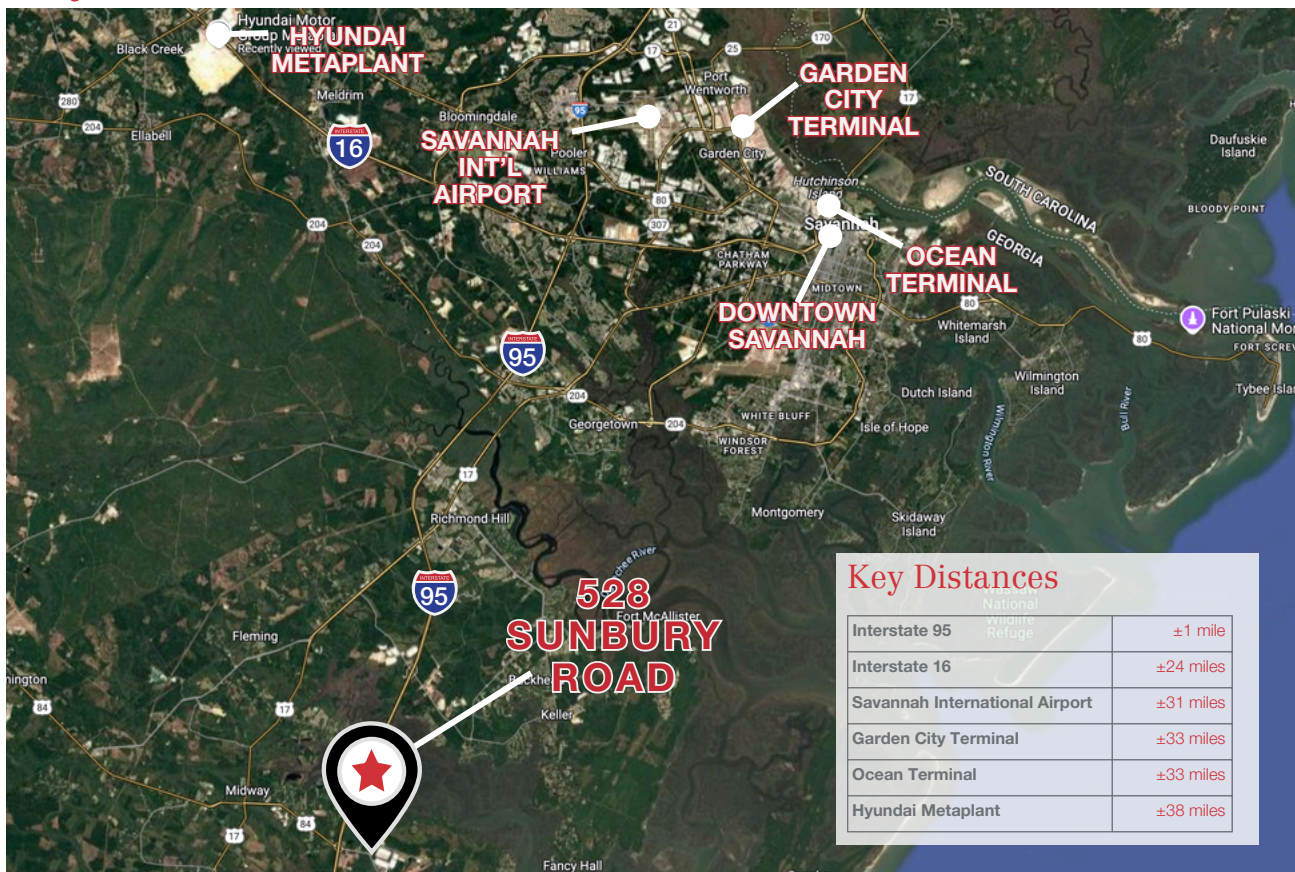
o: 912 250 6700

e: tlembeck@naisavannah.com

Site Location



Key Distances



For more information,
please contact:

Tony Lembeck
m: 914 393 0041

o: 912 250 6700
e: tlembeck@naisavannah.com