



FOR SALE

AVAILABLE FOR SALE - TWO BUILDINGS WITH LOT

**4911-4919 DIVISION STREET
MELROSE PARK, IL 60160**

TWO BUILDINGS

10,035 SF & 6,860 SF

OFFICE

1,122 SF & 800 SF

ZONING

M-1

YEAR BUILT

1956 & 1992, Updated 2020

REDUCED SALE PRICE!

Old Price: \$2,199,000 - New Price! - \$2,099,000

INDUSTRIAL PROPERTY FOR SALE

Two Buildings in Excellent Condition!

PROPERTY HIGHLIGHTS

- Drive-In Doors: 6 total
- Power: 800 Amps
- Five (5) year old roof with warranty
- Adjacent open lot for parking/storage
- Construction: Brick / Block
- Commercial air compressor with air lines included
- 16,000 SF of fully fenced in yard with gate

For more information, please contact:

Thomas Gath

Managing Director

t 773-957-1415

thomas.gath@nrmk.com

8750 W Bryn Mawr Ave Suite 350
Chicago, IL 60631



NEWMARK

Licensed in Illinois as Newmark Midwest Region, LLC

The information contained herein has been obtained from sources deemed reliable but has not been verified and no guarantee, warranty or representation, either express or implied, is made with respect to such information. Terms of sale or lease and availability are subject to change or withdrawal without notice.

4911-4919 DIVISION STREET / MELROSE PARK, IL 60160

TWO BUILDINGS - 10,035 SF & 6,815 SF



TOTAL DRIVE-IN DOORS:

Three (3) - 14' x 12'

Two (2) - 12' x 10'

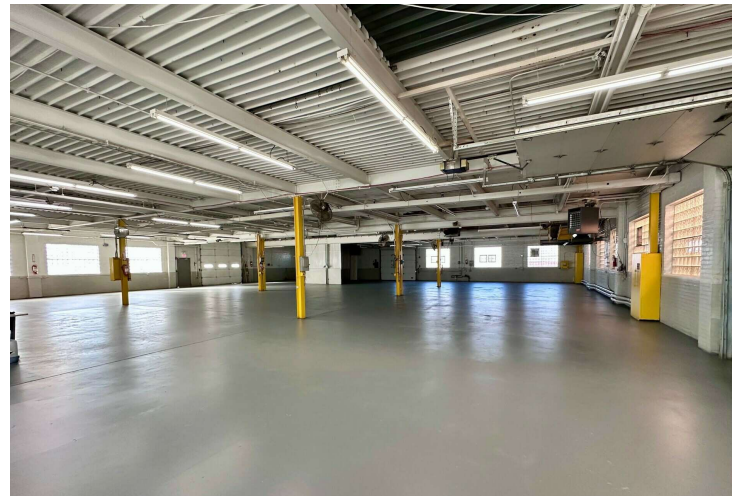
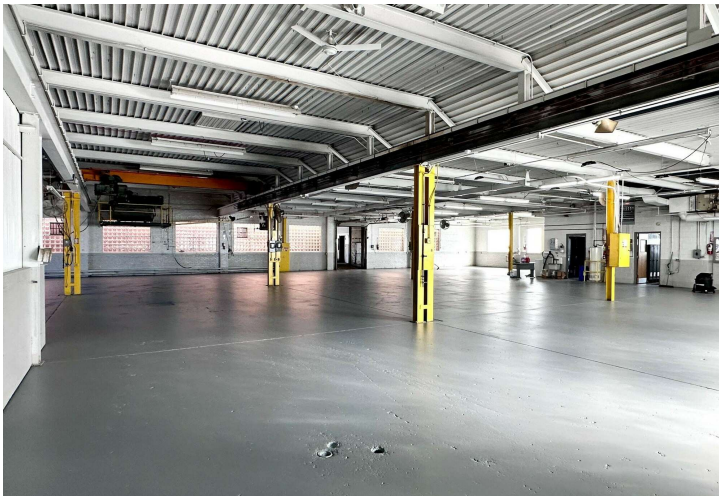
One (1) - 10' x 13'

CEILING HEIGHTS

11'6" - 14' with 5-ton crane

17'8" with 2-ton crane

WAREHOUSE PHOTOS

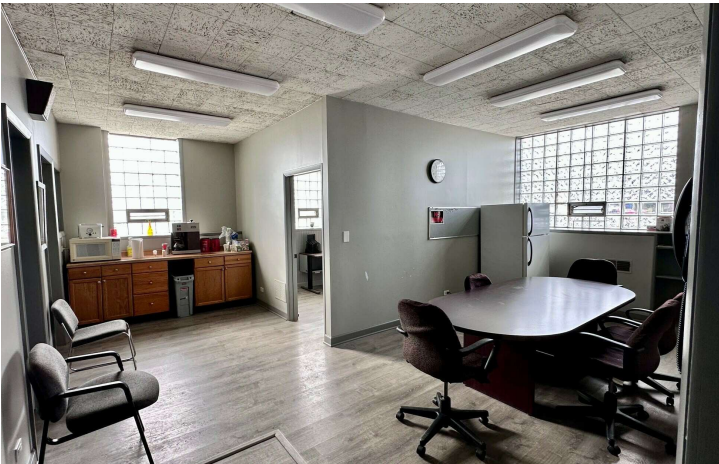
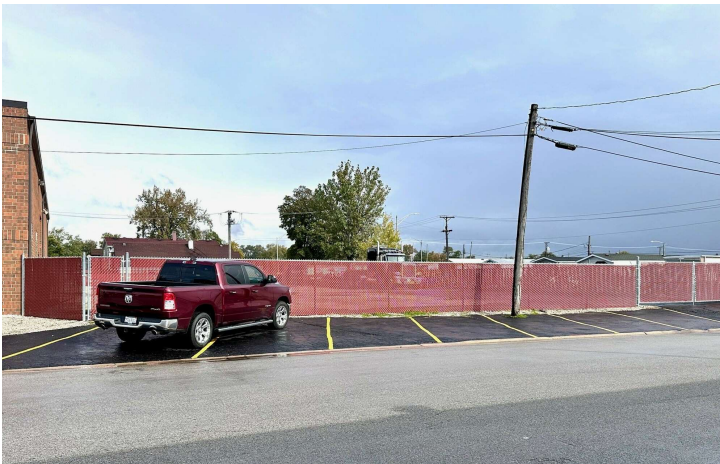


NEWMARK

Licensed in Illinois as Newmark Midwest Region, LLC

The information contained herein has been obtained from sources deemed reliable but has not been verified and no guarantee, warranty or representation, either express or implied, is made with respect to such information. Terms of sale or lease and availability are subject to change or withdrawal without notice.

4911-4919 DIVISION STREET / MELROSE PARK, IL 60160

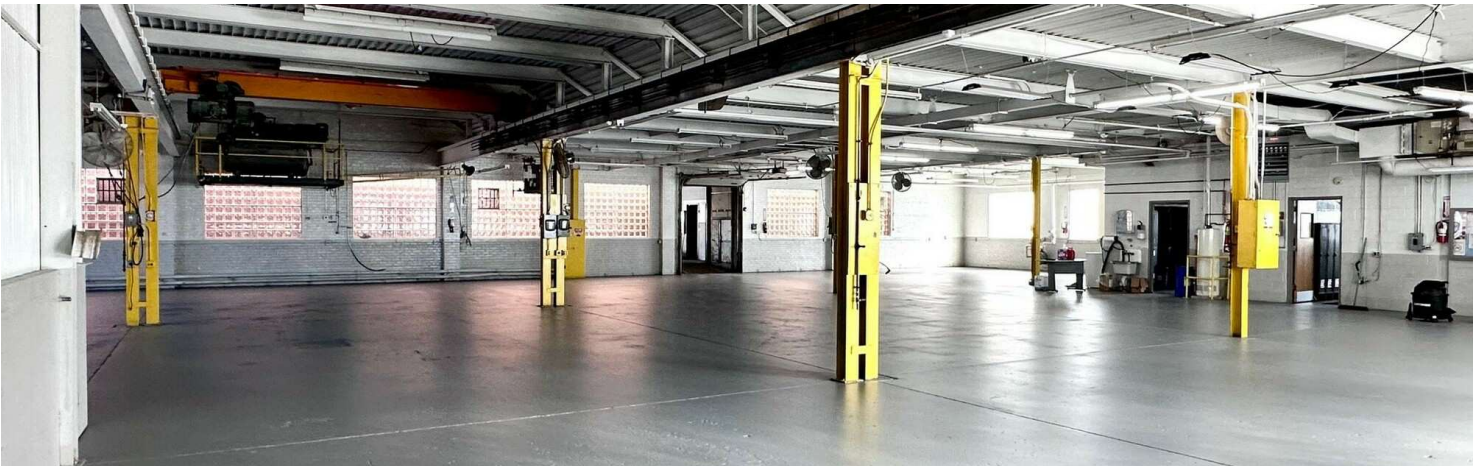


8750 W Bryn Mawr Ave Suite 350
Chicago, IL 60631



NEWMARK

4911-4919 DIVISION STREET / MELROSE PARK, IL 60160



8750 W Bryn Mawr Ave Suite 350
Chicago, IL 60631



NEWMARK

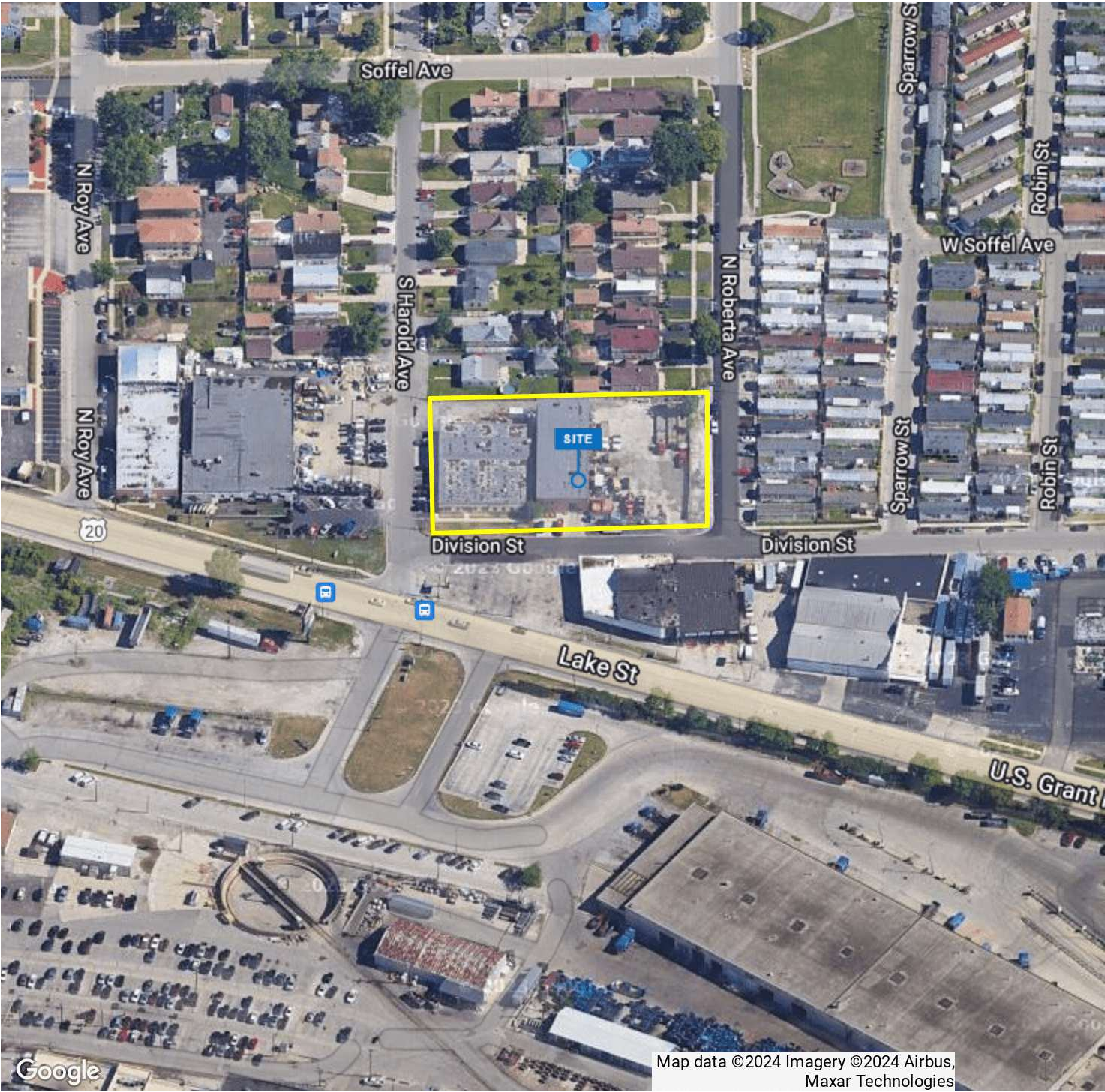
4911-4919 DIVISION STREET / MELROSE PARK, IL 60160



8750 W Bryn Mawr Ave Suite 350
Chicago, IL 60631



NEWMARK



8750 W Bryn Mawr Ave Suite 350
Chicago, IL 60631

