



**SALE**

# Cumberland Building

**800 EAST BROWARD BLVD.**

Fort Lauderdale, FL 33301

**PRESENTED BY:**

**KEITH KIDWELL, SIOR, CCIM**

C: 954.234.8777

keith@svncr.com

**LES BYRON, SIOR, CCIM**

C: 954.401.4713

les@svncr.com

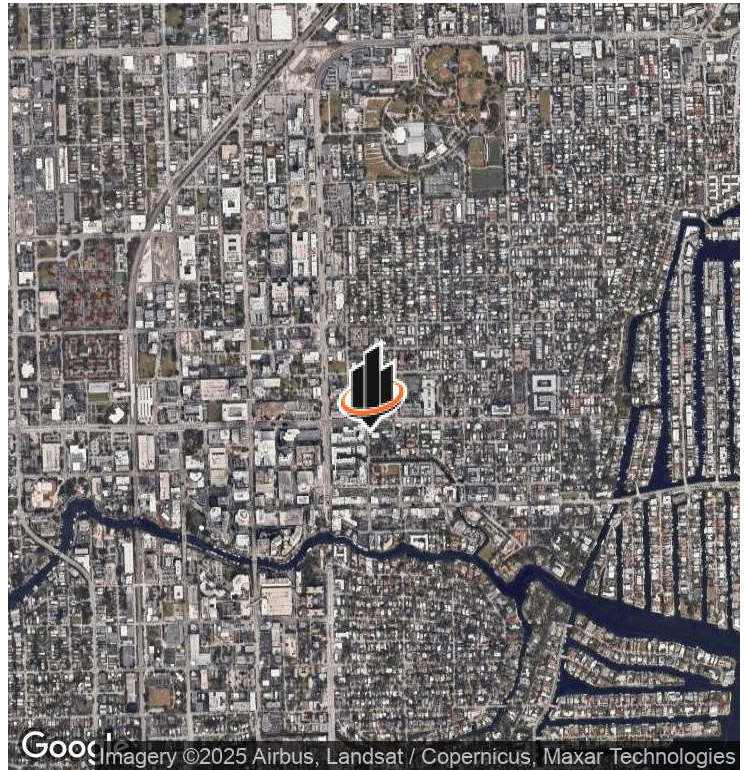
**STEVE DAVIS**

C: 954.650.7824

steve@svncr.com



## PROPERTY SUMMARY



### OFFERING SUMMARY

|                       |                |
|-----------------------|----------------|
| <b>SALE PRICE:</b>    | \$18,000,000   |
| <b>BUILDING SIZE:</b> | 39,826 SF      |
| <b>AVAILABLE SF:</b>  | 1,789 SF       |
| <b>LOT SIZE:</b>      | 1.72 Acres     |
| <b>PRICE / SF:</b>    | \$451.97       |
| <b>CAP RATE:</b>      | 0.8%           |
| <b>NOI:</b>           | \$144,721      |
| <b>YEAR BUILT:</b>    | 1975           |
| <b>ZONING:</b>        | RAC-EMU & RO   |
| <b>MARKET:</b>        | Broward County |
| <b>SUBMARKET:</b>     | Downtown       |

### PROPERTY OVERVIEW

The Cumberland Building has been a downtown Fort Lauderdale landmark for over 47 years. Located on Broward Blvd. one block east of Federal Highway and two blocks north of Las Olas Blvd. It is situated on the eastern edge of the RAC-EMU zoning district, ideal for re-development.

### PROPERTY HIGHLIGHTS

- Incredible Downtown Location
- Located One Block from Federal Hwy & Las Olas Blvd.
- A Short Walk to: Las Olas Riverfront, Riverwalk, Restaurants, Retail...
- Allowable Uses: Hotel, Residential, Retail and Office
- Zoning Allows for High Density Flexible Design

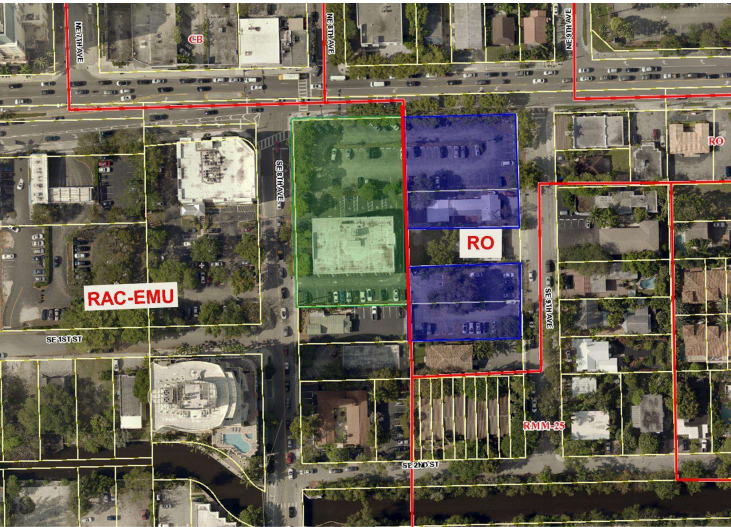
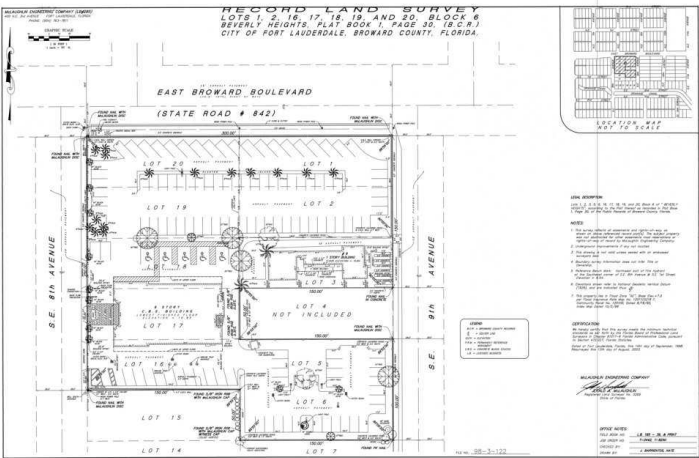
**KEITH KIDWELL, SIOR, CCIM**  
C: 954.234.8777  
keith@svncr.com

**LES BYRON, SIOR, CCIM**  
C: 954.401.4713  
les@svncr.com

**STEVE DAVIS**  
C: 954.650.7824  
steve@svncr.com



ADDITIONAL PHOTOS

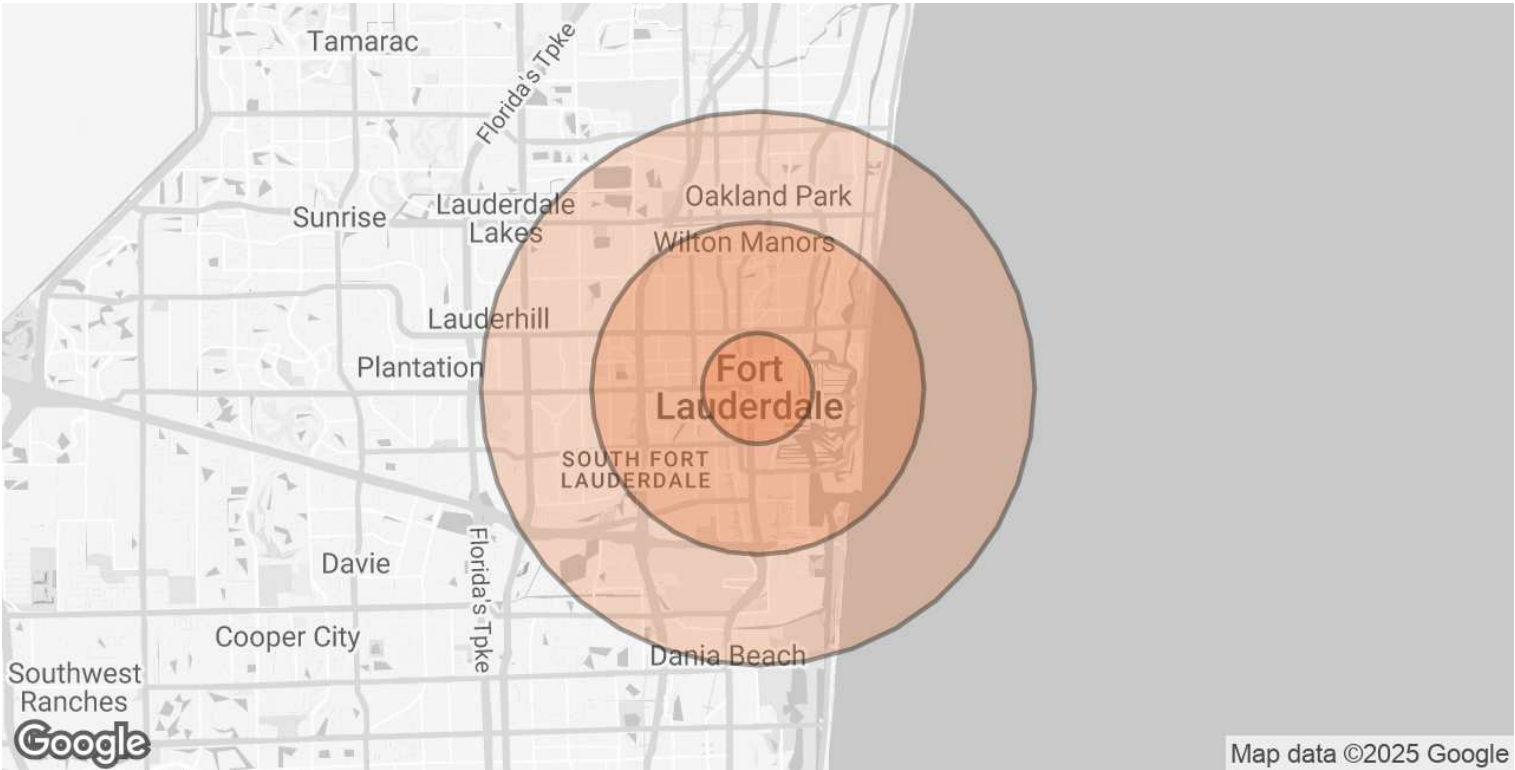


**KEITH KIDWELL, SIOR, CCIM**  
C: 954.234.8777  
keith@svncr.com

**LES BYRON, SIOR, CCIM**  
C: 954.401.4713  
les@svncr.com

**STEVE DAVIS**  
C: 954.650.7824  
steve@svncr.com

DEMOGRAPHICS MAP & REPORT



| POPULATION           | 1 MILE | 3 MILES | 5 MILES |
|----------------------|--------|---------|---------|
| TOTAL POPULATION     | 17,972 | 117,122 | 248,319 |
| AVERAGE AGE          | 38.5   | 39.5    | 39.9    |
| AVERAGE AGE (MALE)   | 38.9   | 39.4    | 39.6    |
| AVERAGE AGE (FEMALE) | 37.6   | 39.1    | 39.8    |

| HOUSEHOLDS & INCOME | 1 MILE    | 3 MILES   | 5 MILES   |
|---------------------|-----------|-----------|-----------|
| TOTAL HOUSEHOLDS    | 8,852     | 52,471    | 104,744   |
| # OF PERSONS PER HH | 2.0       | 2.2       | 2.4       |
| AVERAGE HH INCOME   | \$96,880  | \$79,445  | \$70,487  |
| AVERAGE HOUSE VALUE | \$710,927 | \$468,664 | \$342,908 |

\* Demographic data derived from 2020 ACS - US Census

**KEITH KIDWELL, SIOR, CCIM**  
C: 954.234.8777  
keith@svncr.com

**LES BYRON, SIOR, CCIM**  
C: 954.401.4713  
les@svncr.com

**STEVE DAVIS**  
C: 954.650.7824  
steve@svncr.com