



## RETAIL SPACE

# HUNTINGTON, NY

350 W. JERICHO TURNPIKE

### SIZE

2,704 SF

### ASKING RENT

Upon Request

### NEIGHBORS

McDonalds, Dunkin', Midas, Staples, King Kullen, Sola Salon Suites, Harbor Freight Tools, Starbucks, The Learning Experience, Wendy's, KFC, Pollo Campero

### COMMENTS

Freestanding building at a signalized intersection

56 Parking Stalls

Shared pylon signage available

Chipotle coming soon

Easy access with two curb cuts on Jericho Turnpike

Tremendous visibility with the building close to the road

Close proximity to two large high schools, Walt Whitman Shops with many national retailers, downtown Huntington and strong neighboring retailers

Strong traffic count with approximately 30,000 vehicles passing this site daily

## CONTACT EXCLUSIVE AGENTS

### JOANNE ARGENTI

jargenti@ripcony.com

516.933.8880

### JACK CHERA

jchera@ripcony.com

516.933.8880

**RIPCO**  
REAL ESTATE

1000 Woodbury Road  
Suite 100  
Woodbury, NY 11797  
516.933.8880

Please visit us at [ripcony.com](http://ripcony.com) for more information

This information has been secured from sources we believe to be reliable, but we make no representations as to the accuracy of the information. References to square footage are approximate. Buyer must verify the information and bears all risk for any inaccuracies.

# MARKET AERIAL





**350 W JERICHO TURNPIKE**

- WALT WHITMAN SHOPS**
- BEST BUY, macy's, GAP, ZARA, Apple, Casper, The Cheesecake Factory, UNIQLO, Tanera
  - Rowan, MOVEMENT, ARHAUS, UNTUCKit, JOHNNY WAS, sweetgreen, citibank
  - LV, KAY, SWAROVSKI, POTTERY BARN, WORKSHOP, TAG HEUER, STARBUCKS, LEVI'S
  - Anthropologie, LUSH, TEMPUR, Casper, GIVENCHY, MICHAEL KORS, aerie
  - ANTHROPOLOGIE, hallmark, vineyard vines, Tommy Bahama, west elm, Saks Fifth Avenue, EILEEN FISHER, Abercrombie & Fitch
  - francesca's, pottery barn kids, COACH, FOREVER 21, GUCCI, J.CREW
  - MADISON REED, PANDORA, FOGGY GLO, Bath Works, Sonoma, backstage, PF GIANCO
  - EVERYTHING BUT WATER, LONGCHAMP, TOURNERU, CREED, LUCKY BRAND, LOFT, ZADIG & VOLTAIRE
  - lululemon, Madewell, EUCYANE, EXPRESS, J. JILL SANDRO, foot locker
  - JOHNSTON & MURPHY, Brighton, ALLSAINTS, AMERICAN EAGLE

**AERIAL**



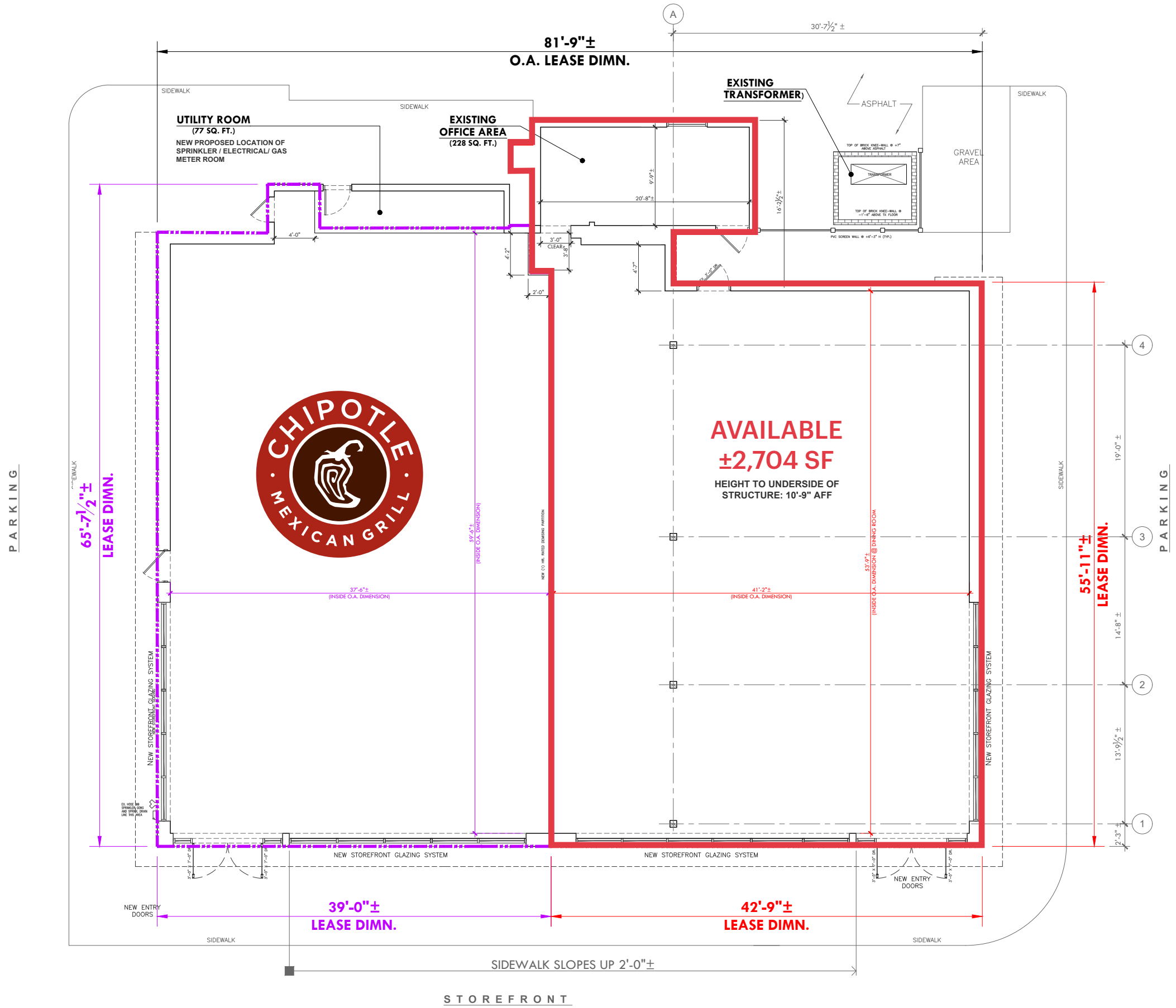
**SITE ACCESS OVERVIEW : POINTS OF ENTRY**



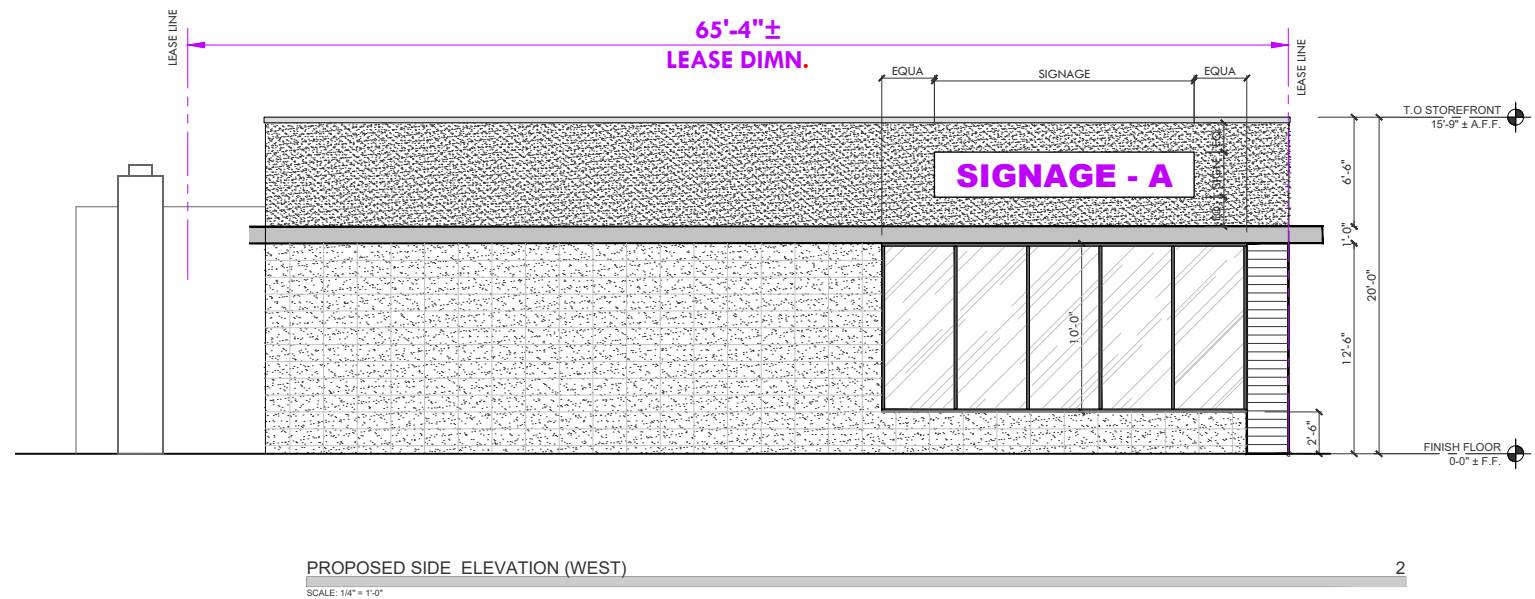
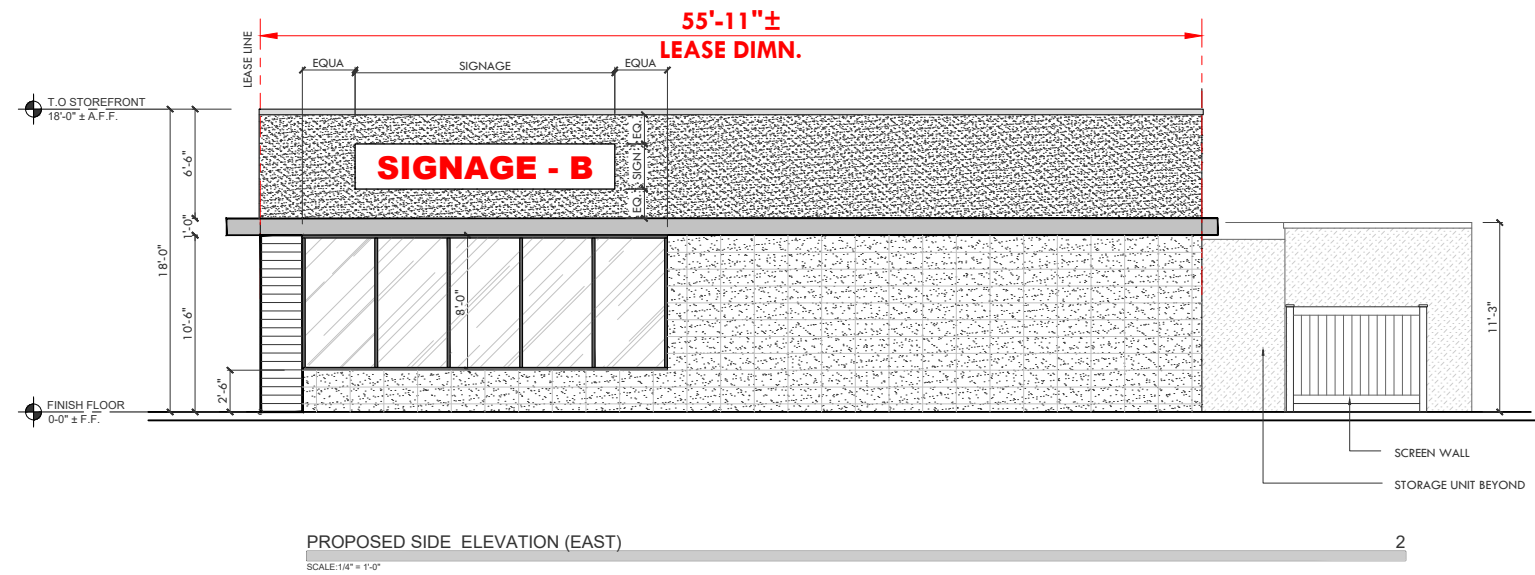
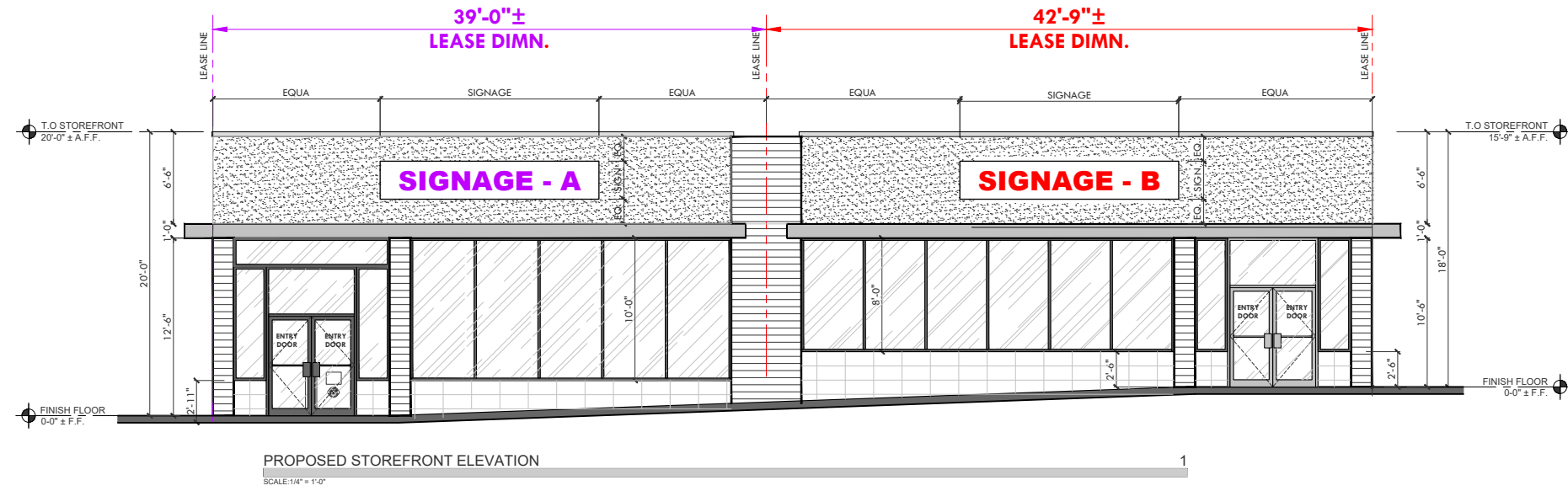
**SITE PLAN**



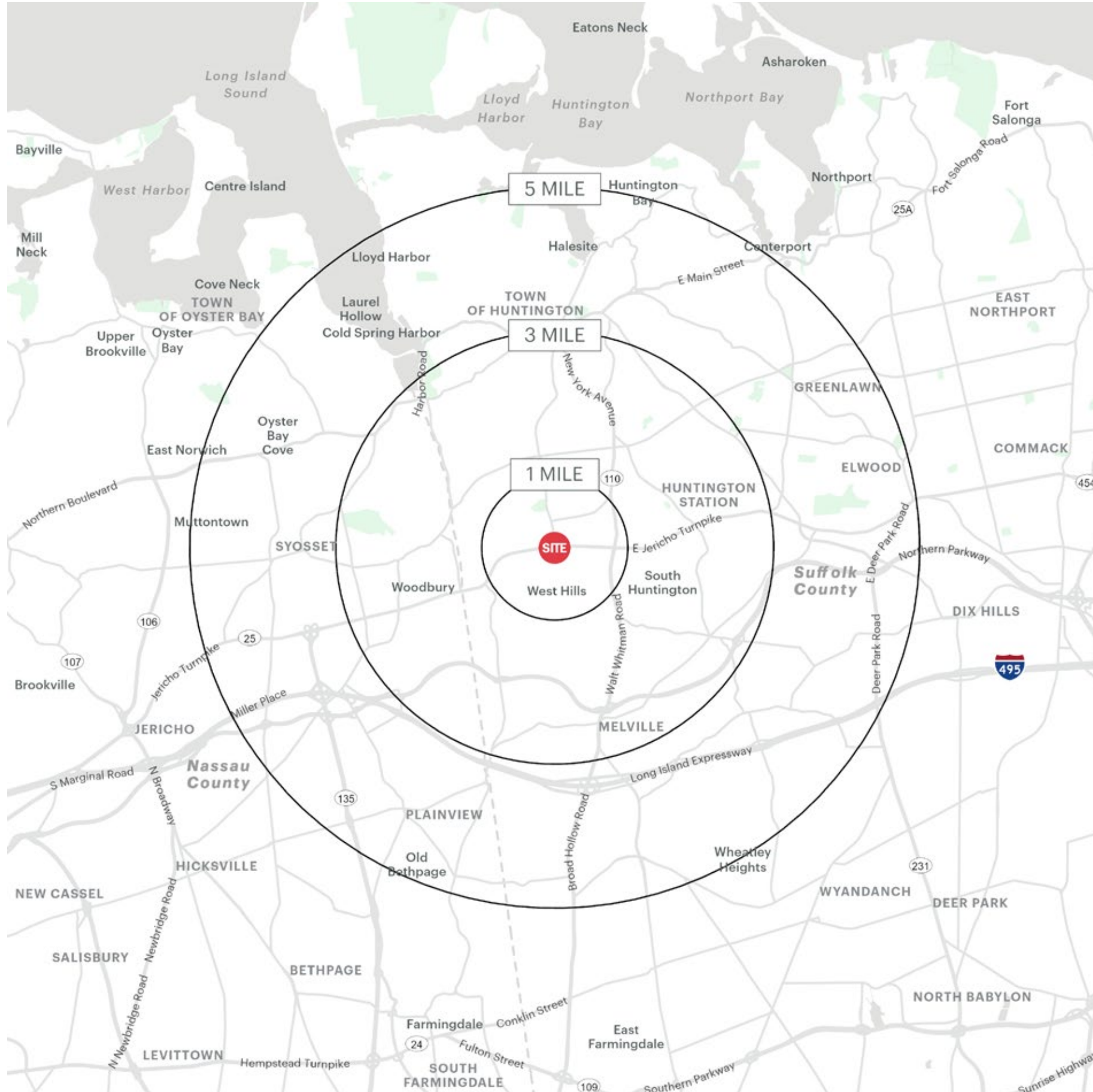
# SITE PLAN



# ELEVATIONS



# AREA DEMOGRAPHICS



350 W. JERICHO TURNPIKE HUNTINGTON, NY

## 1 MILE RADIUS

### POPULATION

10,243

### HOUSEHOLDS

3,149

### AVERAGE HOUSEHOLD INCOME

\$179,622

### MEDIAN HOUSEHOLD INCOME

\$151,230

### COLLEGE GRADUATES (BACHELOR'S +)

3,655 - 50.0%

### TOTAL BUSINESSES

699

### TOTAL EMPLOYEES

6,652

### DAYTIME POPULATION (W/ 16 YR +)

11,521

## 3 MILE RADIUS

### POPULATION

79,159

### HOUSEHOLDS

26,616

### AVERAGE HOUSEHOLD INCOME

\$198,281

### MEDIAN HOUSEHOLD INCOME

\$151,697

### COLLEGE GRADUATES (BACHELOR'S +)

31,497 - 54.0%

### TOTAL BUSINESSES

4,158

### TOTAL EMPLOYEES

38,859

### DAYTIME POPULATION (W/ 16 YR +)

78,765

## 5 MILE RADIUS

### POPULATION

183,990

### HOUSEHOLDS

62,587

### AVERAGE HOUSEHOLD INCOME

\$221,776

### MEDIAN HOUSEHOLD INCOME

\$166,745

### COLLEGE GRADUATES (BACHELOR'S +)

83,353 - 62.0 %

### TOTAL BUSINESSES

11,228

### TOTAL EMPLOYEES

139,496

### DAYTIME POPULATION (W/ 16 YR +)

231,549

# AREA DEMOGRAPHICS

