

FOR SALE



3416 N. Beltline Park Dr. | Mobile, AL



E I-65 SERVICE ROAD N

0.7± AC

N BELTLINE PARK DRIVE

E BELTLINE PARK DRIVE

Pete J. A. Riehm  SIR

251.442.4349 | priehm@cre-mobile.com

Brandon Broadus, CCIM

251.288.7786 | bbroadus@cre-mobile.com



**CRE
MOBILE**
CRE-MOBILE.COM

FOR SALE

 3416 N. Beltline Park Dr. | Mobile, AL



YARD SIZE

0.7± AC Laydown Yard



FRONTAGE

115'± FT Frontage on N. Beltline Park Dr.



BEST USE

Perfect Storage/Laydown Yard or Industrial Development Site



ZONING

I-1 : Light Industrial



UTILITIES

All Utilities Available to Site



SALES PRICE

\$199,000.00 (\$6.50 PSF)

LOCATION ADVANTAGES



Central Location

Conveniently located right off I-65 on N. Beltline Park Dr. with easy access to HWY 98, I-165 and I-10.



Easy Access

Located just 5 miles from the AL State Docks and 12 miles from the Mobile Aeroplex at Brookley.





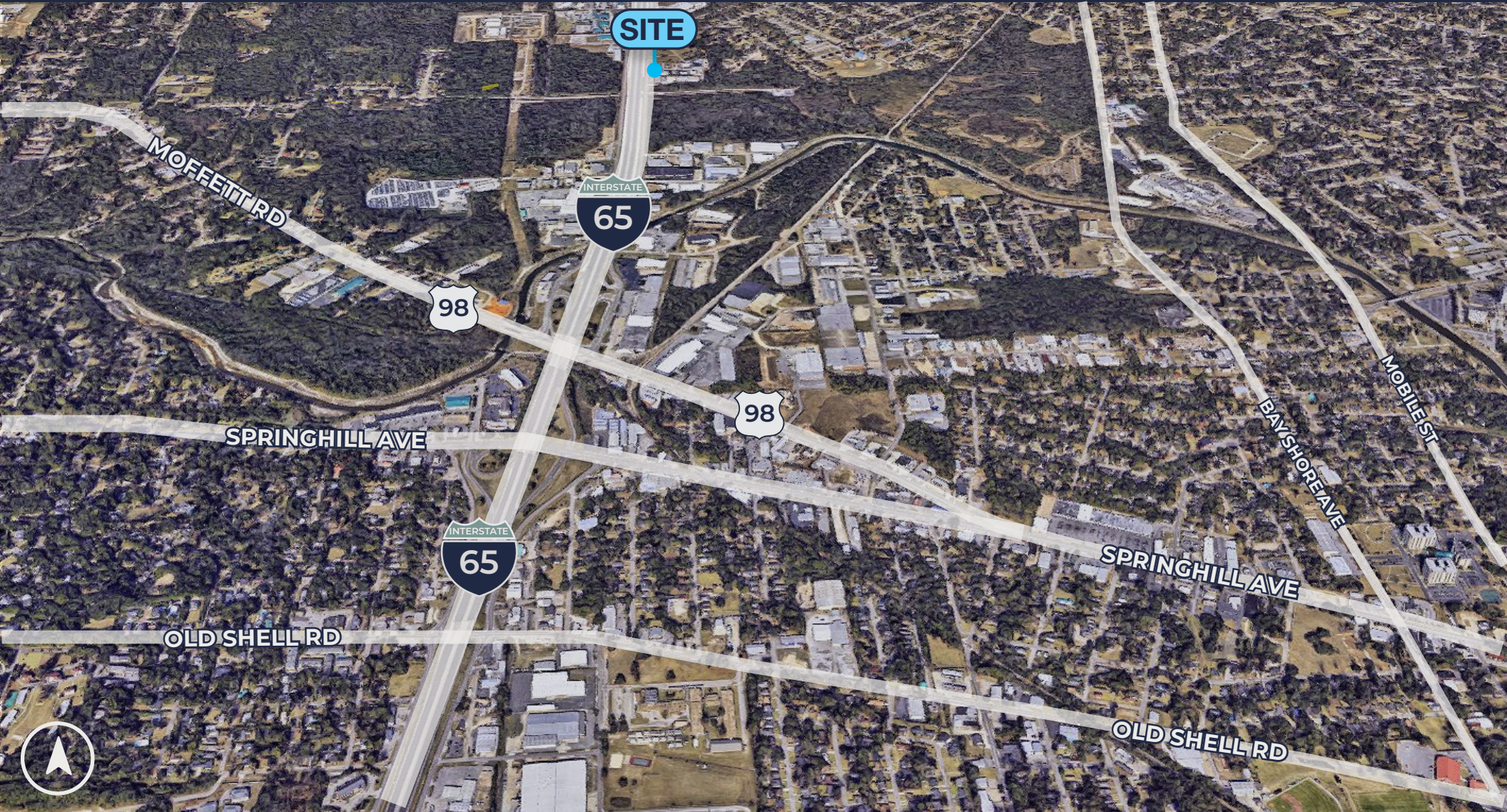
NO WARRANTY OR REPRESENTATION, EXPRESS OR IMPLIED, IS MADE AS TO THE ACCURACY OF THE INFORMATION CONTAINED HEREIN, AND THE SAME IS SUBMITTED SUBJECT TO ERRORS, OMISSIONS, CHANGE OF PRICE, RENTAL OR OTHER CONDITIONS, PRIOR SALE, LEASE OR FINANCING, OR WITHDRAWAL WITHOUT NOTICE, AND OF ANY SPECIAL LISTING CONDITIONS IMPOSED BY OUR PRINCIPALS. NO WARRANTIES OR REPRESENTATIONS ARE MADE AS TO THE CONDITION OF THE PROPERTY NOR ANY HAZARDS CONTAINED THEREIN ARE ANY TO BE IMPLIED.

cre-mobile.com



CRE
MOBILE

FIND
YOUR
SPACE.



About CRE Mobile

CRE Mobile is a team of seasoned professionals with over 175 years of experience in all facets of real estate with a unique presence as a full-service commercial real estate firm in southwest Alabama. We align our goals with yours because we recognize the future of your asset depends upon our performance to deliver results to you. Success comes from being on the same page—from the big picture down to the small details. We are here to help you — find your space —